

## AGENDA

Eau Claire County

• **Committee on Parks & Forest** •

Monday, December 11, 2023, 5:00 p.m.

*Room AG 103 and 104*

Join from the meeting link.

<https://eauclairecounty.webex.com/eauclairecounty/j.php?MTID=mb2ee3476e25aa45fe87d26ec81fd9c9e>

Join by meeting number.

*Meeting number (access code): 2533 733 9036*

*Meeting password: FHjpf6jjK72*

For those wishing to make public comment, you must e-mail Kimberly Watnemoe at [Kimberly.watnemoe@eauclairecounty.gov](mailto:Kimberly.watnemoe@eauclairecounty.gov) at least 60 minutes prior to the start of the meeting. Comments are limited to 3 minutes per person and 30 minutes maximum for the public comment period.

1. Call to Order and Confirmation of Meeting Notice
2. Roll Call
3. Review/Approval of Committee Minutes - **Discussion/Action**
  - a. November 13, 2023
4. Public Comment
5. Approve 2023 Fall Timber Bid Results **Discussion/Action**
6. Director's Report
7. Future Committee Meetings and Items for Discussion

Next Meeting – **January 8, 2024, at 5 pm**

8. Adjourn

Prepared by Kimberly Watnemoe, Parks & Forest

Please note: Upon reasonable notice, efforts will be made to accommodate the needs of disabled individuals through sign language, interpreters or other auxiliary aids. For additional information or to request the service, contact the County ADA Coordinator at 839-4710 (FAX) 8391669 or (TDD) 8394735 or by writing to the ADA Coordinator, Human Resources Department, Eau Claire County Courthouse, 721 Oxford Ave., Eau Claire, Wisconsin 54703.

## MINUTES

Eau Claire County

### • Committee on Parks & Forest •

Monday, November 13, 2023, at 5:00 p.m.

Agricultural and Resource Center

227 1<sup>st</sup> Street West., Altoona – Room 103 and 104

Members Present: Joe Knight, Missy Christopherson, Jodi Lepsch, Nate Otto (Virtual)

Others Present: Josh Pedersen – Director, Jody Gindt – Supervisor, Kimberly Watnemoe – Administrative Specialist III (Committee Clerk), Erika Gullerud – Finance Analyst, Nancy Coffey– Ex Officio Member, Kyle Johnson – DNR County Forest Liaison, Jacob Tumm – EC County Forester, Matt Steinbach – Environmental Science Division EC City Health Department, Rachel Hart-Brinson – EC 4H, Charles Ellefsen – Corp Counsel, Geoff Goodland – EC Curling Club, Chris Gorzek – Kickin Kids, Mallory Williams – President of the University of Eau Claire Ski Club

---

### Call to Order Committee on Parks & Forest and confirmation of meeting notice

Chairman Knight called the meeting to order at 5:00 p.m. and confirmed public posting of the meeting.

### Public Comment

No members of the public wished to make a comment.

### Review of October 9, 2023, and October 16, 2023, Committee Meeting Minutes

Supervisor Lepsch motions to approve the minutes from October 9, 2023, and October 16, 2023. All in favor.

### UWEC Nordic Ski Club Event Request for Tower Ridge January 20, 2024

Williams presented in front of the Committee about wanting to host a fundraising event for the UWEC Nordic Ski Club Event at Tower Ridge. The race would be a 5K loop and has been done in the past. Williams expects the event to bring in roughly 30-40 people and every participant must pay an entrance fee and must pay for their own Tower Ridge parking pass.

Supervisor Christopherson motions to approve the race contingent on the group securing insurance and signing a formal contract. All in favor.

### Curling Club Request to Install and Help Fund Dehumidification Unit at Expo Center

Goodland from the EC Curling club presented on the issue of humidity in the Expo Center. He expressed concern about high humidity, especially in the fall and early spring. The Curling Club is seeking help to recoup some of the cost associated with this machine as it not only benefits them, but also the overall maintenance of the Expo Center as well. The dehumidifier has already been installed and the curling club is requesting \$9,000 to come from the Parks and Forest 2024 Contingency Funds. The Committee would like Goodland to explore all grant options as currently they did not explore any of that.

Supervisor Lepsch motions to postpone action to the December 11th Committee on Parks and Forest Meeting. All In favor.

### Kickin Kids 2024 Request to Host Free Ski Nights on Mondays at Tower Ridge

Gorzek spoke about this event, which has been held in the past at Tower Ridge. It is a free ski night/an opportunity for kids to learn how to ski. This event covers eight Mondays from January to February. All participants are required to purchase a Tower Ridge parking pass.

Supervisor Lepsch motions to approve the event for another year. All in favor.

### **Review Results from Lake Altoona Bacteria Study, Matt Steinbach Health Department**

Steinbach from the EC City Health Department reviewed the lake findings from the 13 test samples taken from Lake Altoona over the summer. This was a pilot program funded from the 2023 Parks and Forest budget. The findings found many markers of birds (avian, goose, and gull) as well as cattle markers. The sample size was small, and data was mixed so Steinbach felt the data was less convincing and he didn't feel this was a service we needed to do every year, more on a as needed basis.

Supervisor Lepsch motions for Steinbach to put together simple talking points to distribute to the Committee. All in Favor.

### **Interdepartmental Rental Fees and Charges Policy**

Rachel Hart-Brinson from UW Extension recapped what was discussed at the previous meeting in November. Chauncey advised cleaning up the code with a clear clarification on who gets charged and who doesn't for Expo Events. If approved, he would need to draft an ordinance to change the code in order to enact the policy.

Supervisor Christopherson motions to allow Corp Counsel to draft an ordinance change for interdepartmental rental charges and fees. All in favor.

### **Skills Park Naming Policy**

No CORBA representative was present for this issue. The committee felt it was unclear what they were directly requesting, but the general consensus was to allow some sort of naming rights.

Supervisor Lepsch motions to postpone vote until the next Committee meeting until CORBA can draft a specific outline on their request. All in Favor.

### **Approval of 2023 Fall Timber Sales**

Forester Tumm discussed the ten new timber sales and two re-bid sales. Minimum bid value from these sales is roughly \$490,000 and 529 acres. Tumm went through each sale and timber volumes and noted that we typically see a 25% increase in revenue from the bids versus the minimum bid value.

Supervisor Christopherson motions to approve Fall 2023 timber sales. All in favor.

### **Approval of 2023 Fall Timber Extensions**

Forester Tumm discussed the extension list, with 1753 being the oldest sale.

Supervisor Christopherson motions to approve the January 1, 2024, Timber Extensions. All in favor.

### **Ordinance 23-24/054 to Reletter 16.30.005 of the Code I through BB. To J. Through CC: Definitions; To Create Section 16.300.005 M of the Code; Definitions; to Amend Section 16.30.140C. of the Code; Vehicular Traffic**

Director Pedersen presented the code change for allowing Class 1 Electric bikes within the parks.

Supervisor Lepsch motions to approve the ordinance. All in favor.

### **Ordinance 23-24/050 to Amend Section 16.02.020 of the Code: Restriction on Timber and Pulp Cutting – Eau Claire County Forest**

Director Pedersen spoke about this ordinance. He requested they remove the portion of the code that includes language to extend the harvesting restricted area to the landward side of the floodplain, while also allowing for conifer stands to be rotated if they will be regenerated by seeding or hand planting. They want to approach the issue with a hands-on/boots on the ground approach versus just utilizing contours on maps which overdraw the lines more than they should in certain areas. This would allow more conifer stands to be rotated if being replanted, while also allowing for additional Carbon Credits to be generated. DNR Liaison Kyle Johnson expressed this would be good for river water quality as they are able to remove trees before they fall into the river etc.

Supervisor Lepsch motions to approve with additional information added to the fact sheet regarding BMPs management. All in Favor.

### **Use of Contingency Funds and Application for Wisconsin Municipal Dam Grant to Make Repairs to Lake Altoona Dam**

Director Pedersen reported on this issue. The Lake Altoona Dam was inspected back in 2022 and the report finally came back last month for repairs needed next year. This was an expense not planned into the 2024 budget, so Pedersen is requesting to take this to the County Board for approval of contingency funds for the project. The total cost for the engineering and repair would be roughly \$105,000. Pedersen will be applying to the Municipal Dam Grant as well which, if approved, covers 50% of the cost. Supervisor Lepsch motions to draw up the resolution to allow the usual of contingency funds and authorized Pedersen to apply for the Municipal Dam Grant. All in Favor.

### **Director's Report**

Director Pedersen provided an update on the Trails Gala which he spoke at on Saturday November 11th. Supervisor Gindt shared an end of season update as the department gears up for the winter season. Winter storage is complete at the Expo Center and docks come out this week at Lake Altoona/Lake Eau Claire. He also reported on the completion of the Lake Eau Claire Boat Landing including a new picnic pad area. The Coon Fork Garage project is also nearing completion. Lastly, the department obtained the Sheriff's Department boat.

### **Future Parks & Forest Committee Meetings and Items for Discussion**

Next Parks & Forest committee meeting date is set for December 11, 2023, at 5:00 p.m.

### **Committee on Parks & Forest Adjournment**

The Committee on Parks & Forest adjourned at 7:15 p.m.

Respectfully Submitted by,



Kimberly Watnemoe  
Committee Clerk  
Administrative Specialist III

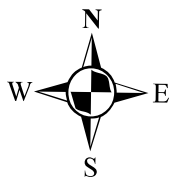
# Fall Bid Opening 2023

## TIMBER SALE BID RESULTS EAU CLAIRE COUNTY FOREST

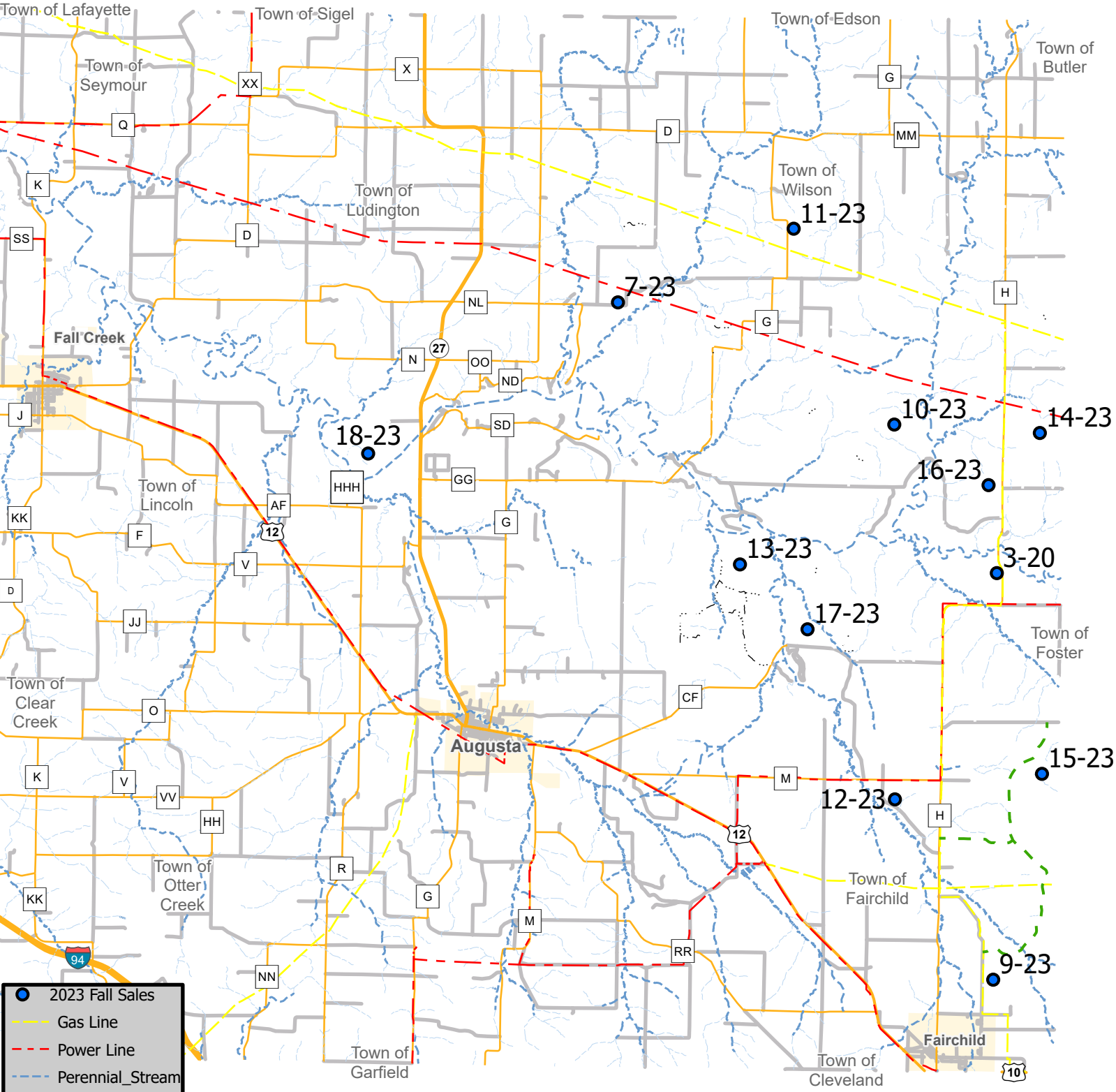
Thursday, December 7, 2023

Trct #	# of Bids		High Bidder	Advertised Value	Bid Value
	Qualified	Non Q			
7-23	0		0	\$13,041.50	\$ -
9-23	2		STRZOK	\$11,005.00	\$ 15,700.00
10-23	2		MARTIN'S	\$71,352.00	\$ 154,976.00
11-23	6		MARTIN'S	\$76,675.50	\$ 146,864.00
12-23	2		MARTIN'S	\$35,412.00	\$ 64,380.00
13-23	0		0	\$24,180.00	\$ -
14-23	7		NORTHWEST	\$34,786.00	\$ 64,835.00
15-23	2		MARTIN'S	\$29,995.00	\$ 34,896.00
16-23	6		NORTHWEST	\$179,514.20	\$ 272,626.00
17-23	2		MARTIN'S	\$6,555.00	\$ 8,472.00
18-23	0		0	\$7,365.00	\$ -
3-20	0		0	\$2,070.00	\$ -
<b>Total</b>	<b>29</b>	<b>0</b>	<b>TOTALS</b>	<b>\$491,951.20</b>	<b>\$ 762,749.00</b>

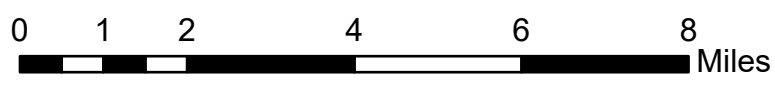
Number of Sales Offered	12
Number of Sales Sold	8
Value of Sales Sold	\$ 762,749.00
Advertised Value of Sales Sold	\$ 491,951.20
Difference of Advertised & Sold Values	\$ 270,797.80
	55%
# of Loggers Bidding	8



# Eau Claire County Forest 2023 Fall Timbersales

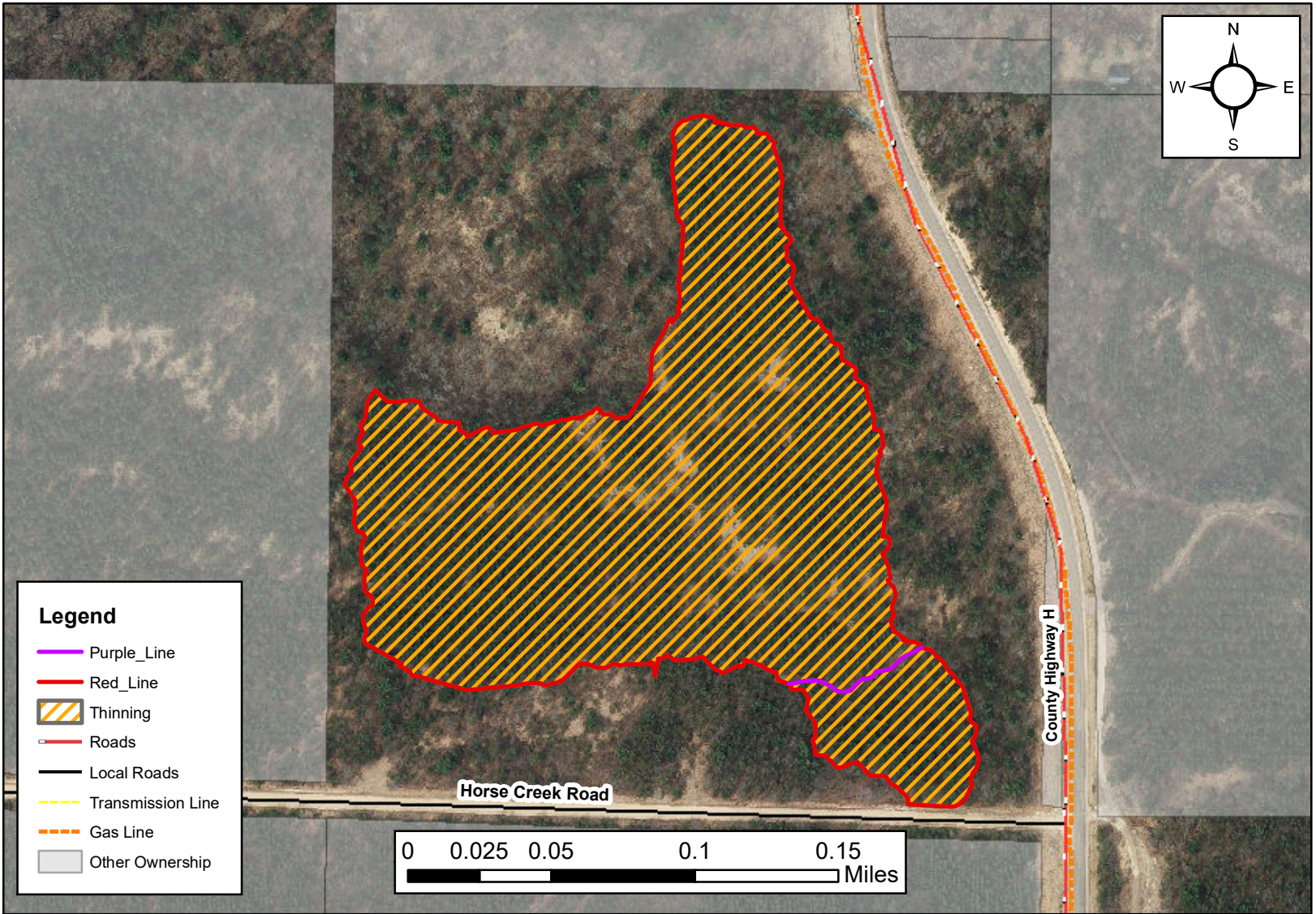


- 2023 Fall Sales
- Gas Line
- Power Line
- Perennial\_Stream
- County HWY
- Interstate HWY
- State HWY
- US HWY
- L
- Other



# Eau Claire County Forest

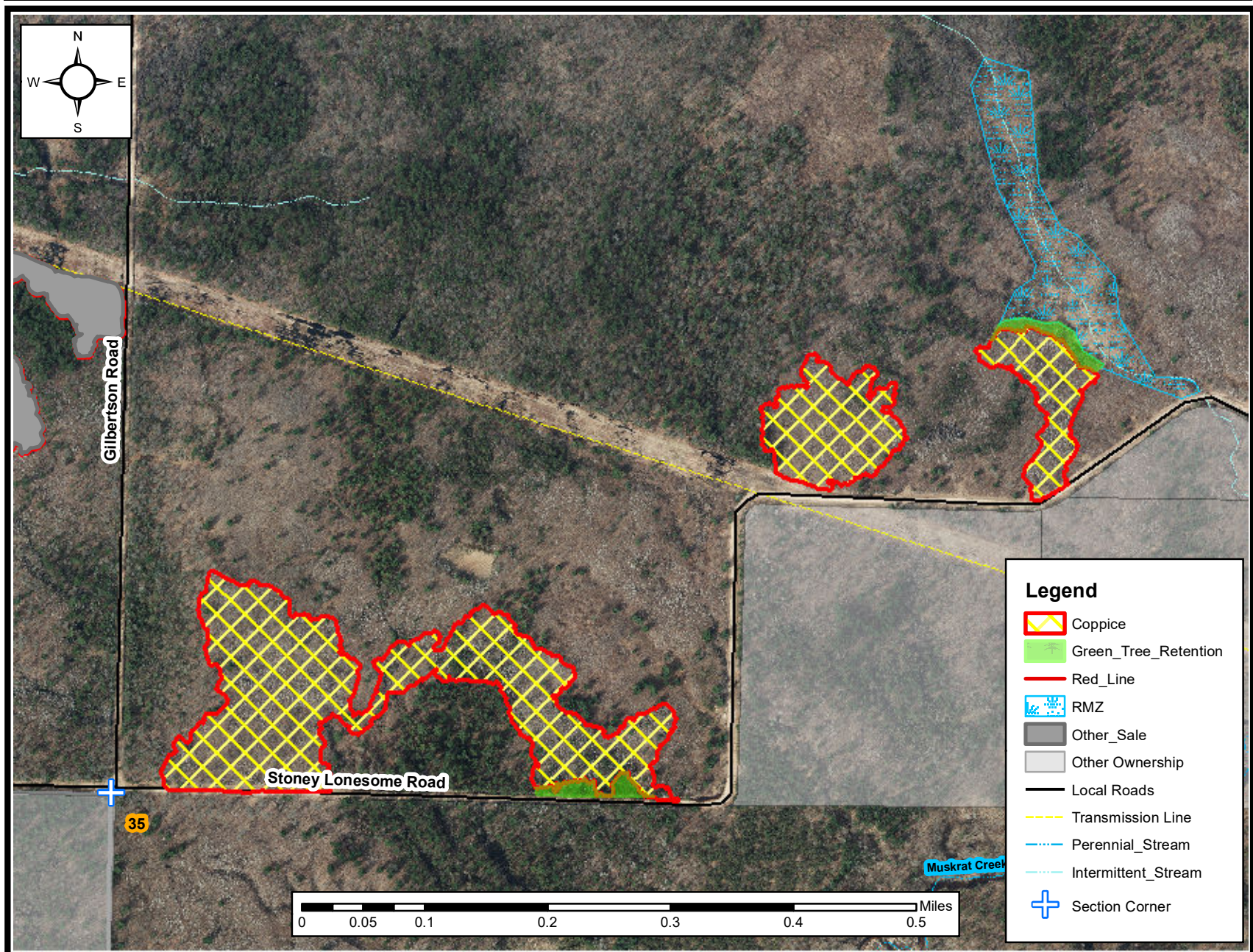
<b>Sale Name:</b> Yote Trail			<b>Tract Number:</b> 3-20		<b>Estimated Volumes</b>				
<b>Twp:</b> 26N	<b>Range:</b> 5W	<b>Section:</b> 23	<b>Township:</b> Bridge Creek			<b>SPECIES</b>	<b>TONS</b>	<b>MBF</b>	
<b>Compartment:</b> 24		<b>Stand:</b> 16 & 17			*Red Pine	142			
<b>Soil:</b> Sand		<b>Topography:</b> Mostly Flat			Black Oak	6			
<b>Acres:</b> 15		<b>Timber Sale #:</b>							
<b>Notes:</b>		*Red Pine contains approximately 16 tons of Jack Pine							
						<b>Sale Minimum Bid:</b>	\$2,070.80		



<b>Cutting Specifications:</b>	
1.	Sale boundaries are marked in Red Paint or are bounded by obvious roads.
2.	Spring/Summer harvest opportunity
3.	<b>Harvest every third row in the First thinning area. Harvest all Orange marked trees in thinning area.</b>
4.	All skid trails and landings must be approved by the sale administrator.
5.	All cut pine and spruce products must be removed from the sale area within two weeks during the period of May 15 <sup>th</sup> through August 15 <sup>th</sup> .
6.	Stumps must be sprayed April 1 <sup>st</sup> through November 30 <sup>th</sup> .
7.	All slash must be lopped and scattered within two feet of the ground
8.	Purple line denotes a change in thinning. North of the line is 3 <sup>rd</sup> row and south is a marked thinning.

# Eau Claire County Forest

<b>Sale Name:</b> Stoney Lonesome Aspen			<b>Tract Number:</b> 7-23		<b>Estimated Volumes</b>			
<b>Twp:</b> 27N	<b>Range:</b> 6W	<b>Section:</b> 26	<b>Township:</b> Wilson		<b>SPECIES</b>	<b>Pulp (tons)</b>	<b>Bolts (tons)</b>	<b>Logs (MBF)</b>
<b>Compartment:</b> 64		<b>Stand:</b> 12			Aspen	650	55	-
<b>Soil:</b> Loamy Sand		<b>Topography:</b> Level			MX Hwd	130	10	-
<b>Acres:</b> 29.5		<b>Timber Sale #:</b>			White Pine	80	-	3
<b>Notes:</b> *No decking allowed on the Powerline ROW					Oak	50	-	-
					<b>Sale Minimum Bid:</b>		\$13,041.50	



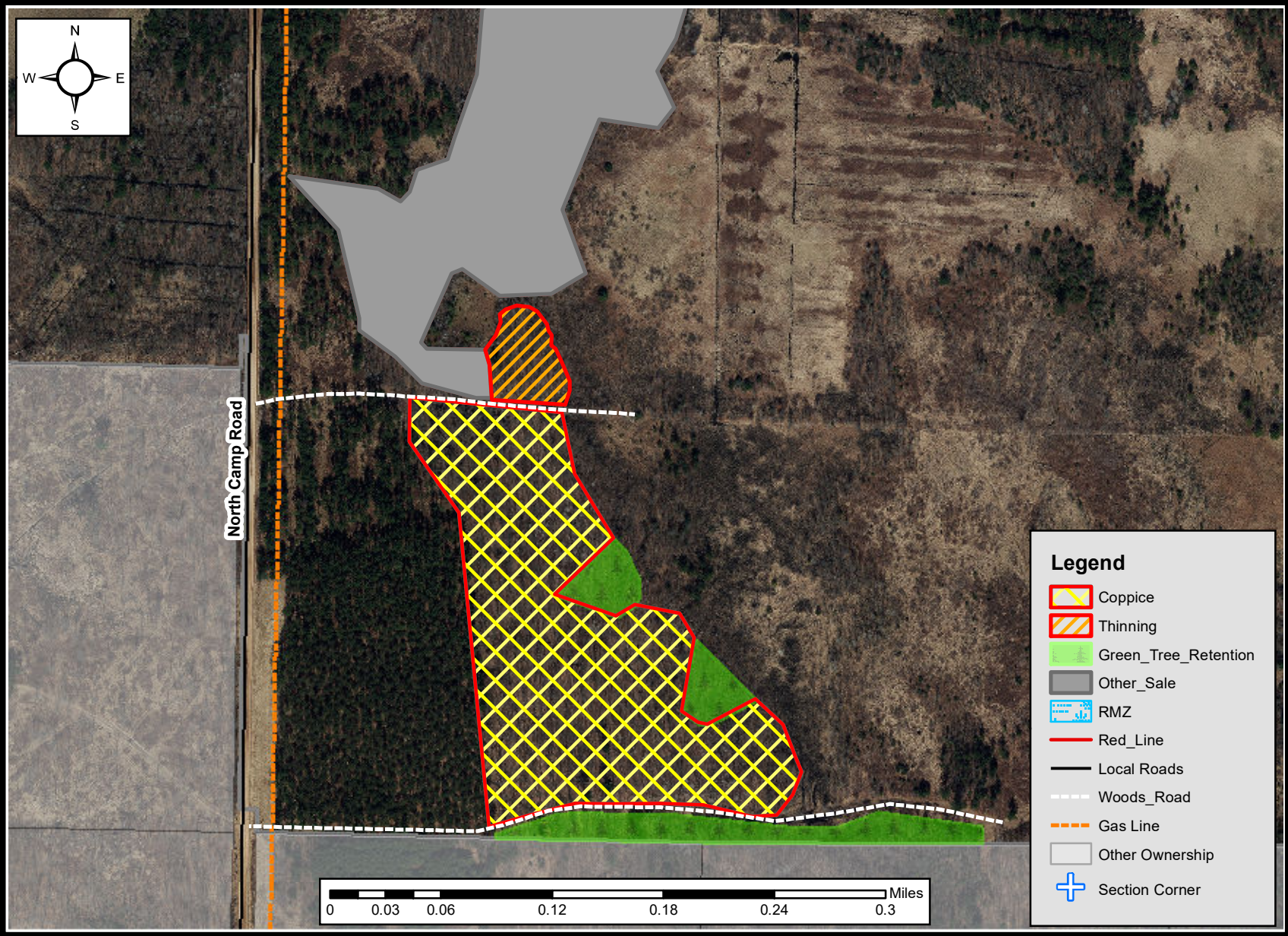
### Cutting Specifications:

1.	Sale is delineated by red paint or roads
2.	No equipment or slash is allowed within the Green Tree Retention areas or RMZ
3.	Sale is limited to dry or frozen conditions
4.	<b>Coppice: Harvest all stems 1 inch and larger except leave all oak over 8" DBH</b>
5.	All roads and landings must be approved by the sale administrator
6.	All slash must be lopped and scattered within 2' of the ground



# Eau Claire County Forest

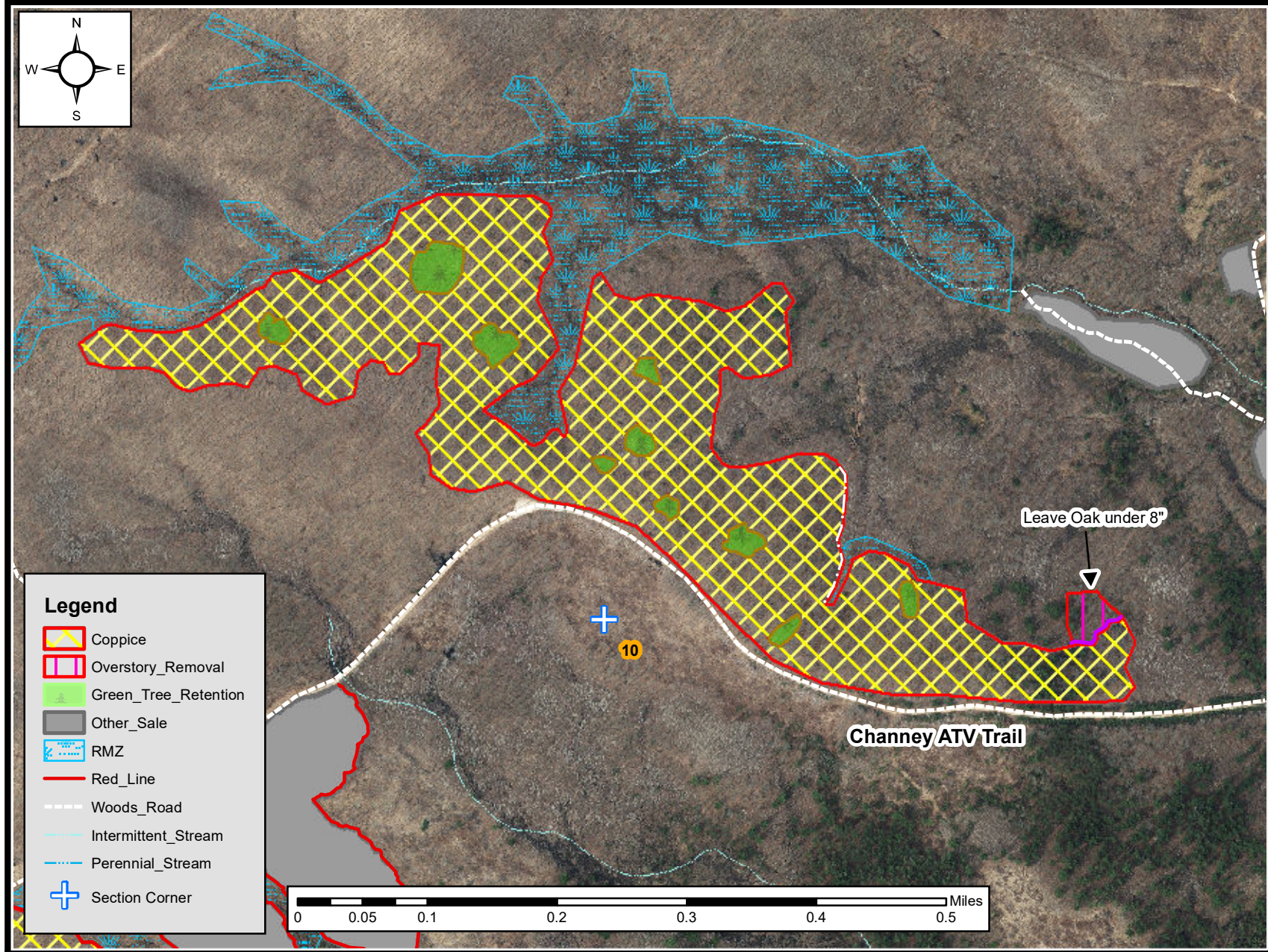
<b>Sale Name:</b> Doe a Deer			<b>Tract Number:</b> 9-23		<b>Estimated Volumes</b>			
<b>Twp:</b> 25N	<b>Range:</b> 5W	<b>Section:</b> 25	<b>Township:</b> Fairchild		<b>SPECIES</b>	<b>Pulp (tons)</b>	<b>Bolts (tons)</b>	<b>Logs (MBF)</b>
<b>Compartment:</b> 1		<b>Stand:</b> 18 and 28			Oak*	290	70	25
<b>Soil:</b> Sandy Loam		<b>Topography:</b> Slightly Rolling			White Oak	-	-	9
<b>Acres:</b> 16		<b>Timber Sale #:</b>			Red Maple**	290	15	2
<b>Notes:</b>	*Oak is mostly Pin Oak with some Red and Black **Red Maple pulp is 6% White Birch				Aspen	60	-	-
					<b>Sale Minimum Bid:</b>		\$11,005.00	



<b>Cutting Specifications:</b>	
1.	Sale is delineated by red paint and woods roads
2.	No equipment or slash is allowed within the Green Tree Retention areas or RMZ
3.	Sale is limited to dry or frozen conditions. No harvesting or road building from April 1 <sup>st</sup> to July 15 <sup>th</sup> due to Oak Wilt
4.	<b>Coppice: Harvest all stems 1 inch and larger except trees marked with green paint and islands</b>
5.	<b>Thinning: Leave all Oak, harvest all other merchantable trees</b>
6.	All roads and landings must be approved by the sale administrator
7.	All slash must be lopped and scattered within 2' of the ground

# Eau Claire County Forest

<b>Sale Name:</b> Nubs			<b>Tract Number:</b> 10-23		<b>Estimated Volumes</b>			
<b>Twp:</b> 26N	<b>Range:</b> 5W	<b>Section:</b> 3,4,10	<b>Township:</b> Bridge Creek		<b>SPECIES</b>	<b>Pulp (tons)</b>	<b>Bolts (tons)</b>	<b>Logs (MBF)</b>
<b>Compartment:</b> 35		<b>Stand:</b> 20			Pin Oak*	1500	475	190
<b>Soil:</b> Sandy Loam		<b>Topography:</b> Rolling			White Oak	-	-	35
<b>Acres:</b> 56		<b>Timber Sale #:</b>			Red Maple	825	90	7
<b>Notes:</b>	*Pin Oak pulp and bolts are a mix of Pin, Black, Red, and White Oak				White Pine	45	-	-
	*Pin Oak Logs are a mix of Pin Oak, Red Oak, and Black oak				<b>Sale Minimum Bid:</b>	\$71,352.00		

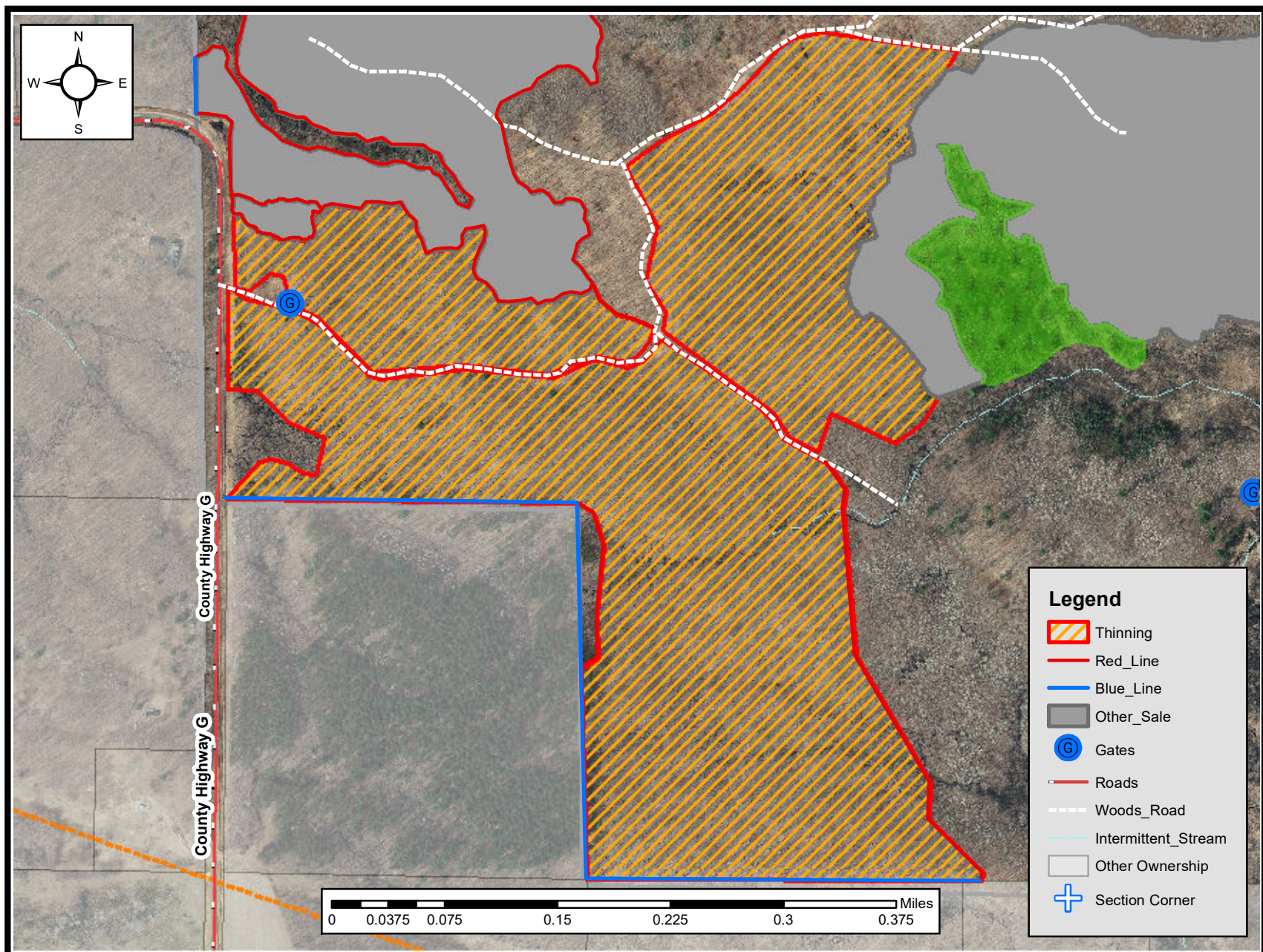


## Cutting Specifications:

1.	Sale is delineated by red and purple paint
2.	No equipment or slash is allowed within the Green Tree Retention areas or RMZ
3.	Sale is limited to dry or frozen conditions. No harvesting or road building from April 1 <sup>st</sup> to July 15 <sup>th</sup> due to Oak Wilt
4.	<b>Coppice: Harvest all stems 1 inch and larger except islands</b>
5.	<b>Overstory Removal: Harvest all stems 1 inch and larger except Leave all Oak under 8 inches DBH</b>
5.	All roads and landings must be approved by the sale administrator
6.	All slash must be lopped and scattered within 2' of the ground

# Eau Claire County Forest

<b>Sale Name:</b> G that's some nice Oak			<b>Tract Number:</b> 11-23		<b>Estimated Volumes</b>			
<b>Twp:</b> 27N	<b>Range:</b> 5W	<b>Section:</b> 20	<b>Township:</b> Wilson		<b>SPECIES</b>	<b>Pulp (tons)</b>	<b>Bolts (tons)</b>	<b>Logs (MBF)</b>
<b>Compartment:</b> 55		<b>Stand:</b> 13,18,19			Red Oak*	800	575	120
<b>Soil:</b> Loamy Sand		<b>Topography:</b> Slightly Rolling			White Oak	-	-	25
<b>Acres:</b> 78		<b>Timber Sale #:</b>			Mixed Hwd	850	220	56
<b>Notes:</b>	*Red Oak pulp and bolts contains red and white oak -Mx Hwd Saw is 80% Red Maple				<b>Sale Minimum Bid:</b>		\$76,675.50	

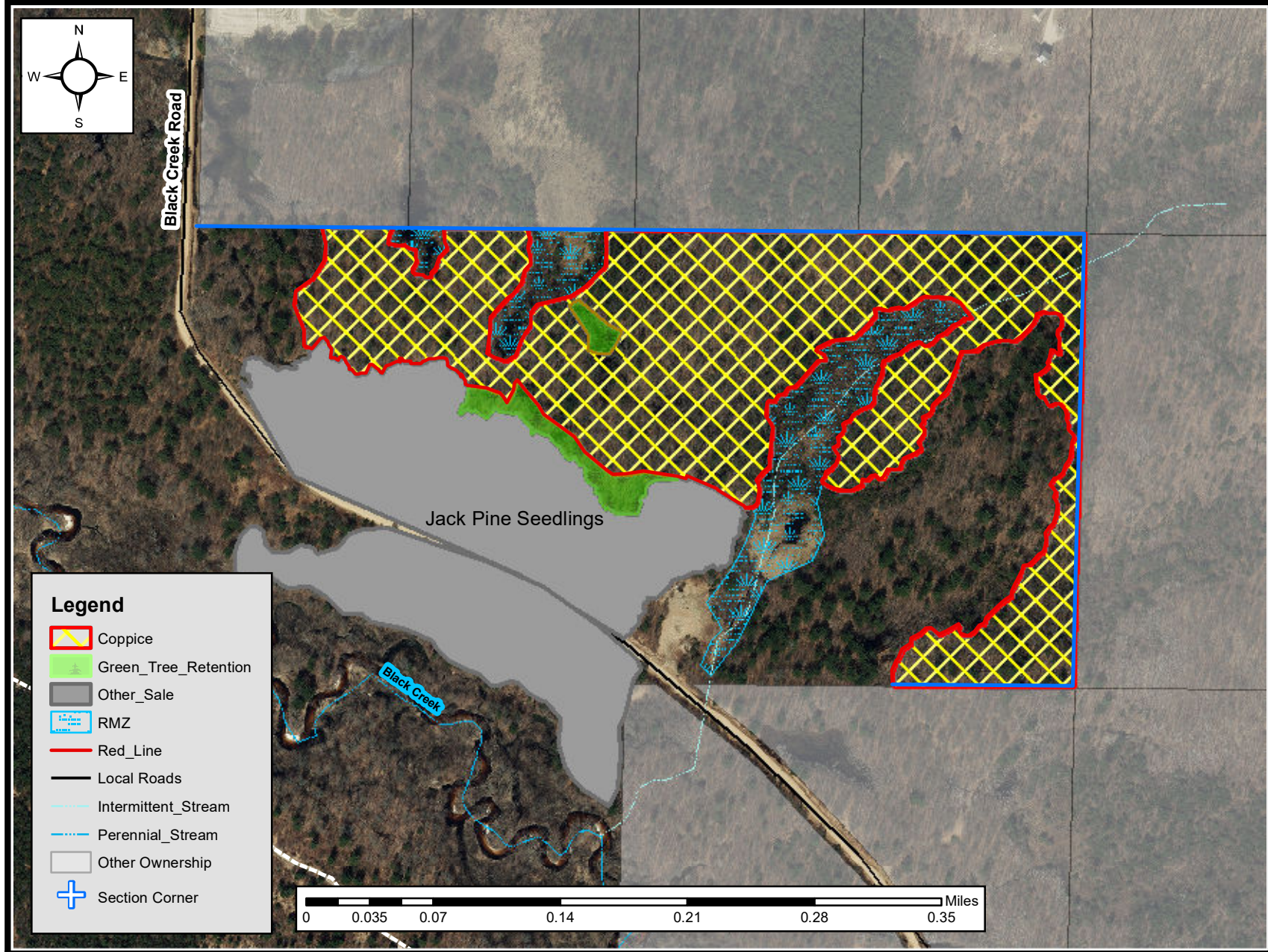


### Cutting Specifications:

1.	Sale is delineated by red and blue paint, roads, and old sales
2.	Sale is limited to dry or frozen conditions. No harvesting or road building from April 1 <sup>st</sup> to July 15 <sup>th</sup> due to Oak Wilt
3.	<b>Thinning: Harvest all Ash, Aspen, White Pine, Red Maple (under 12" DBH) and trees marked with Orange Paint</b>
4.	<b>Leave all trees marked with green paint</b>
5.	All roads and landings must be approved by the sale administrator
6.	All slash must be lopped and scattered within 2' of the ground and placed away from residual trees

# Eau Claire County Forest

<b>Sale Name:</b> Exhaustion			<b>Tract Number:</b> 12-23		<b>Estimated Volumes</b>			
<b>Twp:</b> 25N	<b>Range:</b> 5W	<b>Section:</b> 10	<b>Township:</b> Fairchild		<b>SPECIES</b>	<b>Pulp (tons)</b>	<b>Bolts (tons)</b>	<b>Logs (MBF)</b>
<b>Compartment:</b> 5		<b>Stand:</b> 32 and 33			Oak	570	235	120
<b>Soil:</b> Sand, mucky sand		<b>Topography:</b> Level			White Pine**	100	-	25
<b>Acres:</b> 27		<b>Timber Sale #:</b>			Red Maple*	400	95	8
<b>Notes:</b>	*Red Maple pulp includes 2% other hardwood				<b>Sale Minimum Bid:</b>		\$35,412.00	
	**White Pine Pulp includes 7% Jack Pine							

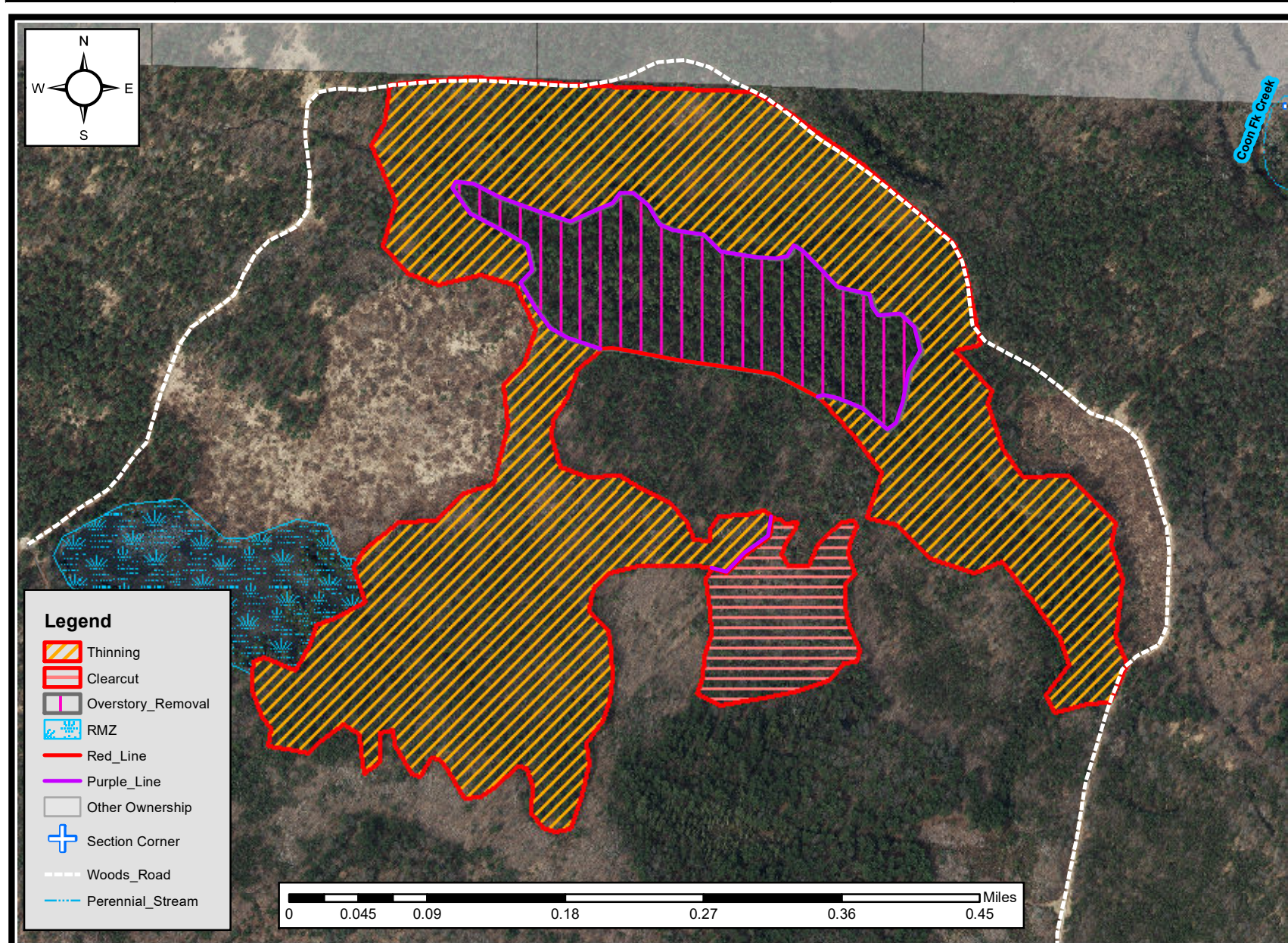


## Cutting Specifications:

1. Sale is delineated by red and blue paint
2. No equipment or slash is allowed within the Green Tree Retention areas or RMZ
3. Sale operations are limited between November 1 – March 14<sup>th</sup> or when completely snow covered
4. **Coppice: Harvest all stems 1 inch and larger except trees marked with green paint and islands**
5. An Access Road will need to be established from Black Creek Road through the Jack Pine Planting
6. All roads and landings must be approved by the sale administrator
7. All slash must be lopped and scattered within 2' of the ground

# Eau Claire County Forest

<b>Sale Name:</b> Crooked Pine			<b>Tract Number:</b> 13-23		<b>Estimated Volumes</b>			
<b>Twp:</b> 26N	<b>Range:</b> 5W	<b>Section:</b> 19	<b>Township:</b> Bridge Creek		<b>SPECIES</b>	<b>Pulp (tons)</b>	<b>Bolts (tons)</b>	<b>Logs (MBF)</b>
<b>Compartment:</b> 22		<b>Stand:</b> 3,11,12,23			White Pine	750	-	120
<b>Soil:</b> Sand, mucky sand		<b>Topography:</b> Level			Oak	240	-	15
<b>Acres:</b> 80		<b>Timber Sale #:</b>			Mixed Hwd	240	-	2
<b>Notes:</b>					<b>Sale Minimum Bid:</b>		\$24,180.00	

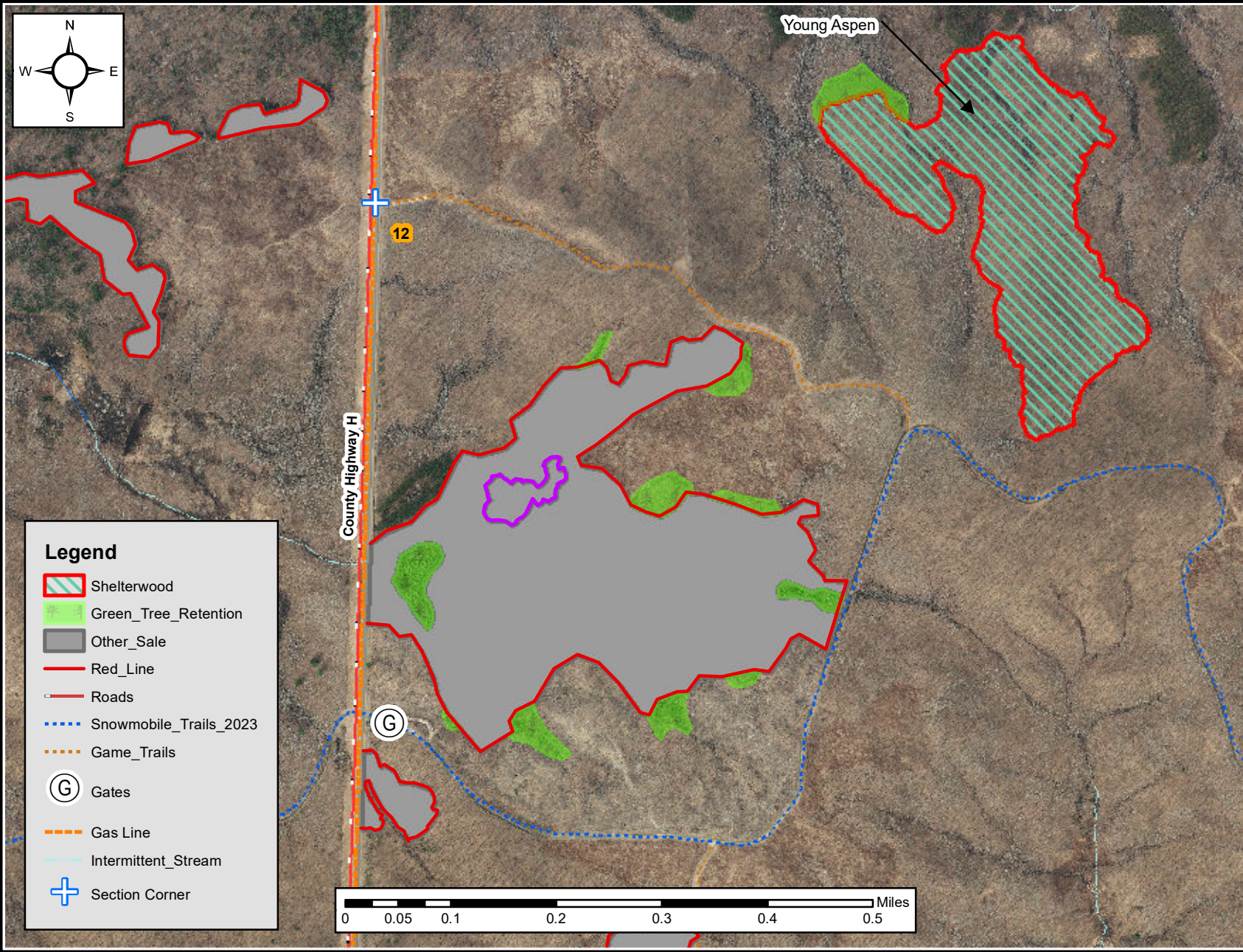


## Cutting Specifications:

1. Sale is delineated by red and purple paint
2. No equipment or slash is allowed within the RMZ
3. Sale is limited to frozen conditions only. No tracking or crossing wetlands without administrators approval.
4. **Thinning: Harvest all stems marked with orange paint**
5. **Clearcut: Harvest all Pine marked with orange paint and all hardwood 1 inch and larger DBH**
6. **Overstory Removal: Harvest all stems larger than 5" DBH and leave all trees marked with green paint**
7. All roads and landings must be approved by the sale administrator
8. All slash must be lopped and scattered within 2' of the ground

# Eau Claire County Forest

<b>Sale Name:</b> Humpbacked Dolphin			<b>Tract Number:</b> 14-23		<b>Estimated Volumes</b>			
<b>Twp:</b> 26N	<b>Range:</b> 5W	<b>Section:</b> 1,12	<b>Township:</b> Bridge Creek		<b>SPECIES</b>	<b>Pulp (tons)</b>	<b>Bolts (tons)</b>	<b>Logs (MBF)</b>
<b>Compartment:</b> 37		<b>Stand:</b> 26			Red Oak*	450	260	55
<b>Soil:</b> Sand, mucky sand		<b>Topography:</b> Rolling			Red Maple	220	80	10
<b>Acres:</b> 31		<b>Timber Sale #:</b>			White Oak	-	-	20
<b>Notes:</b>	-Leave Young Aspen pocket shown on the map -Snowmobile Trail must be kept clear while trails are open *Red Oak saw approximately 10% Black Oak *Red Oak bolts and pulp contain Red, White, and Black Oak				<b>Sale Minimum Bid:</b>	\$34,786.00		

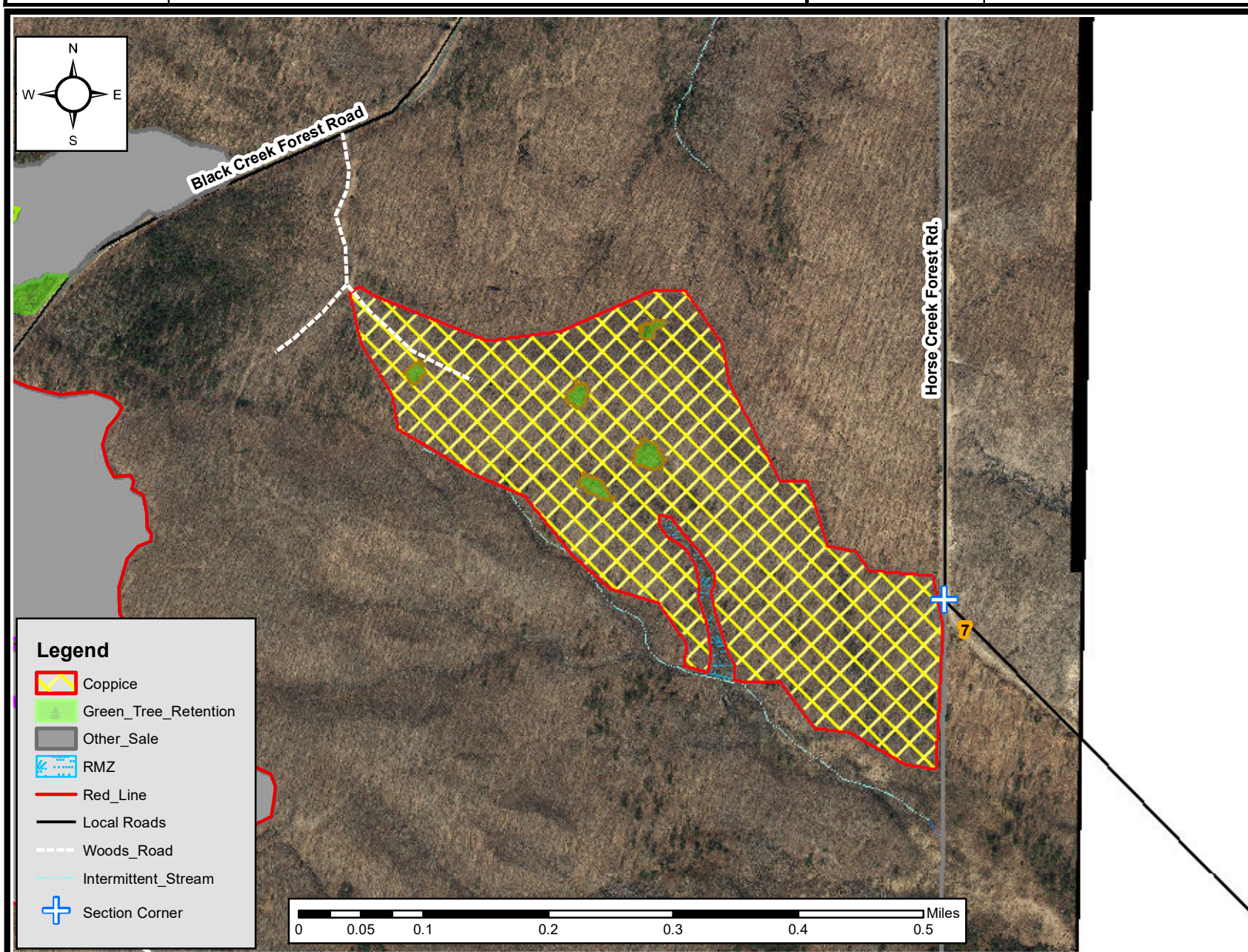


**Cutting Specifications:**

1. Sale is delineated by red paint
2. No equipment or slash is allowed within the Green Tree Retention areas
3. Sale is limited to dry or frozen conditions. No harvesting or road building from April 1<sup>st</sup> to July 15<sup>th</sup> due to Oak Wilt
4. **Shelterwood: Harvest all stems 1 inch and larger except trees marked with green paint**
5. An Access Road will need to be established from Snowmobile trail or the Game Trail
6. All roads and landings must be approved by the sale administrator

# Eau Claire County Forest

<b>Sale Name:</b> Buttons			<b>Tract Number:</b> 15-23		<b>Estimated Volumes</b>			
<b>Twp:</b> 25N	<b>Range:</b> 5W	<b>Section:</b> 1,12	<b>Township:</b> Fairchild		<b>SPECIES</b>	<b>Pulp (tons)</b>	<b>Bolts (tons)</b>	<b>Logs (MBF)</b>
<b>Compartment:</b> 7			<b>Stand:</b> 5		Aspen	1650	470	-
<b>Soil:</b> Sandy Loam			<b>Topography:</b> Slightly rolling		Mixed Hwd*	500	25	2
<b>Acres:</b> 48			<b>Timber Sale #:</b>		White Pine	40	-	1
<b>Notes:</b>		*MX Hwd pulp is 80% Red Maple, 19% White Birch, and 1% Black Cherry			<b>Sale Minimum Bid:</b>		\$29,995.00	

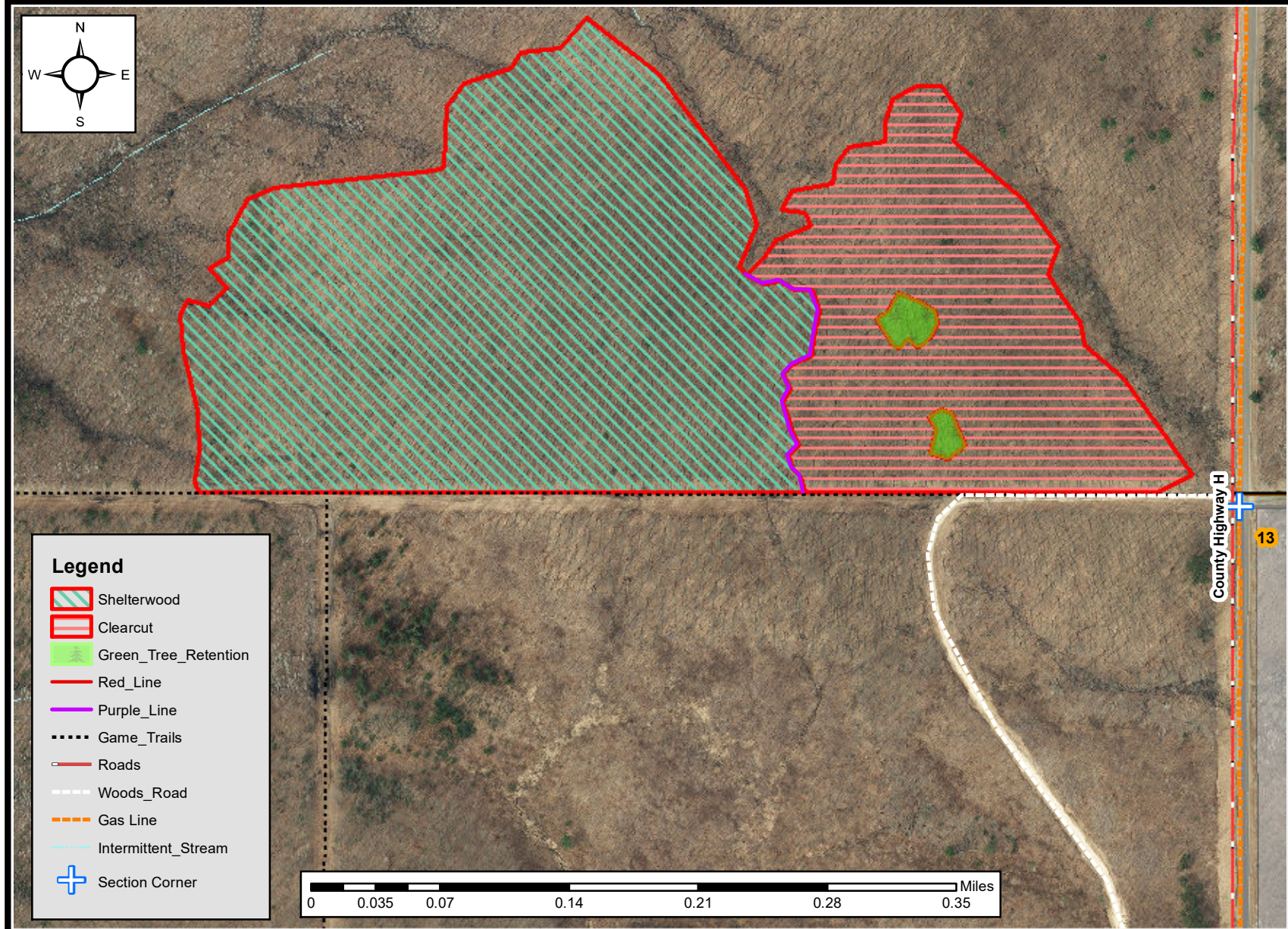


### Cutting Specifications:

1.	Sale is delineated by red and green paint
2.	No equipment or slash is allowed within the Green Tree Retention areas or RMZ
3.	Sale is limited to dry or frozen conditions.
4.	<b>Coppice: Harvest all stems 1 inch and larger Except Leave All Oak and Green Tree Retention Islands</b>
5.	All roads and landings must be approved by the sale administrator
6.	All slash must be lopped and scattered within 2' of the ground

# Eau Claire County Forest

<b>Sale Name:</b> Channey T Oak			<b>Tract Number:</b> 16-23		<b>Estimated Volumes</b>			
<b>Twp:</b> 26N	<b>Range:</b> 5W	<b>Section:</b> 11	<b>Township:</b> Bridge Creek		<b>SPECIES</b>	<b>Pulp (tons)</b>	<b>Bolts (tons)</b>	<b>Logs (MBF)</b>
<b>Compartment:</b> 36		<b>Stand:</b> 1 and 2			Red Oak*	-	-	350
<b>Soil:</b> Loam		<b>Topography:</b> Slightly rolling			White Oak	-	-	30
<b>Acres:</b> 59		<b>Timber Sale #:</b>			Oak	1100	825	-
<b>Notes:</b>	*Red Oak Saw includes 4 MBF of Black Oak **Red Maple volumes include a small amount of other hardwoods and basswood				Red Maple**	243	130	15
					<b>Sale Minimum Bid:</b>	\$179,514.20		



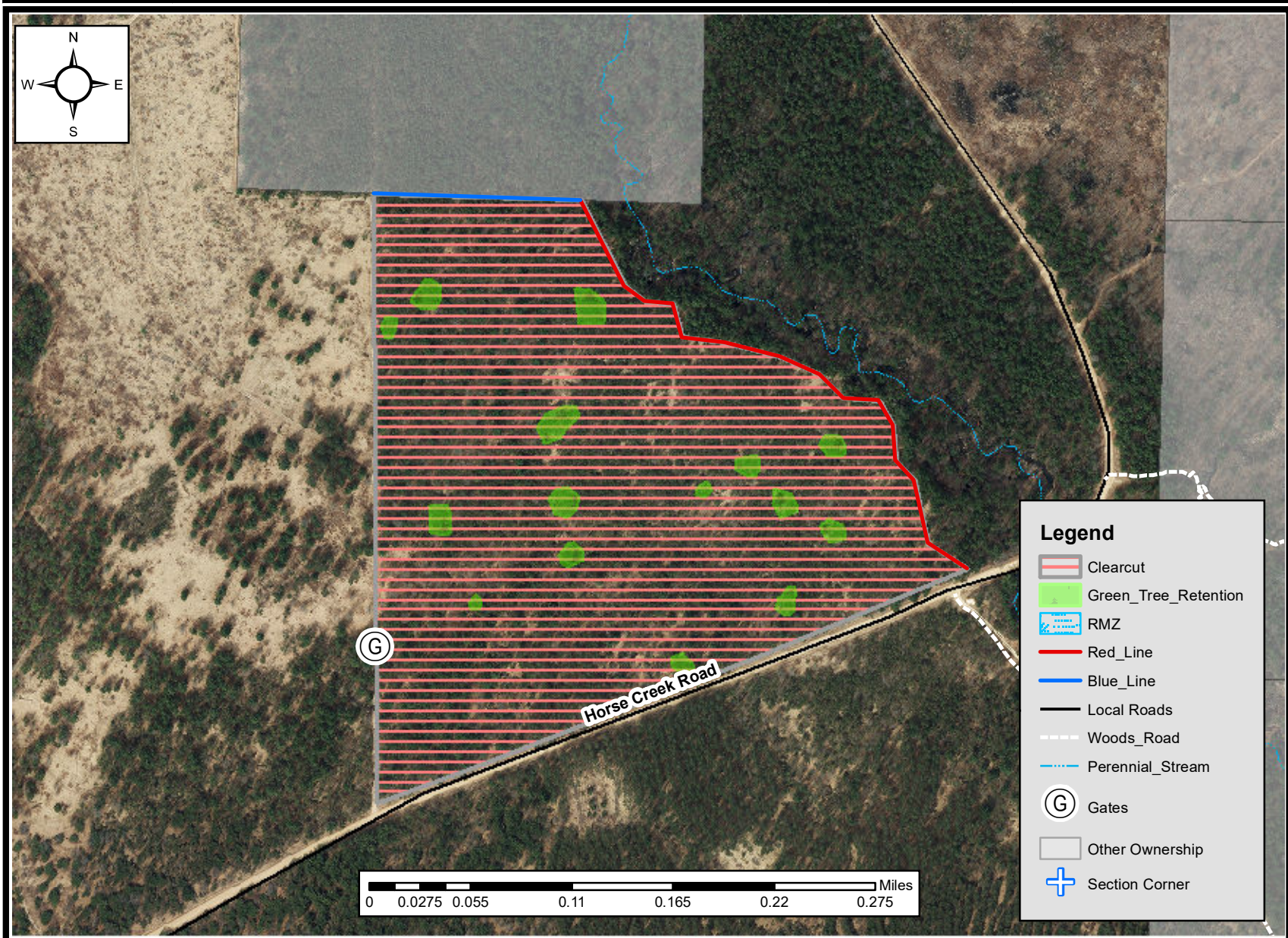
## Cutting Specifications:

1.	Sale is delineated by red paint and the game trail
2.	No equipment or slash is allowed within the Green Tree Retention areas
3.	Sale is limited to dry or frozen conditions. No harvesting or road building from April 1 <sup>st</sup> to July 15 <sup>th</sup> due to Oak Wilt
4.	<b>Clearcut: Harvest all stems 1 inch and larger except trees marked with green paint and islands</b>
5.	<b>Shelterwood: Harvest all stems 1 inch and larger except trees marked with Green Paint</b>
6.	All roads and landings must be approved by the sale administrator
7.	All slash must be lopped and scattered within 2' of the ground



# Eau Claire County Forest

<b>Sale Name:</b> Coon Fork			<b>Tract Number:</b> 17-23		<b>Estimated Volumes</b>			
<b>Twp:</b> 26N	<b>Range:</b> 5W	<b>Section:</b> 29	<b>Township:</b> Bridge Creek		<b>SPECIES</b>	<b>Pulp (tons)</b>	<b>Bolts (tons)</b>	<b>Logs (MBF)</b>
<b>Compartment:</b> 19		<b>Stand:</b> 4,25,16			Jack Pine	320	-	-
<b>Soil:</b> Sand		<b>Topography:</b> Level			White Pine	210	-	-
<b>Acres:</b> 42		<b>Timber Sale #:</b>			Red Pine	140	-	-
<b>Notes:</b>	This area will be burned in the future. Please try to keep slash piles to the interior of the sale as much as possible.				Oak	140	-	1
					<b>Sale Minimum Bid:</b>	\$6,555.00		

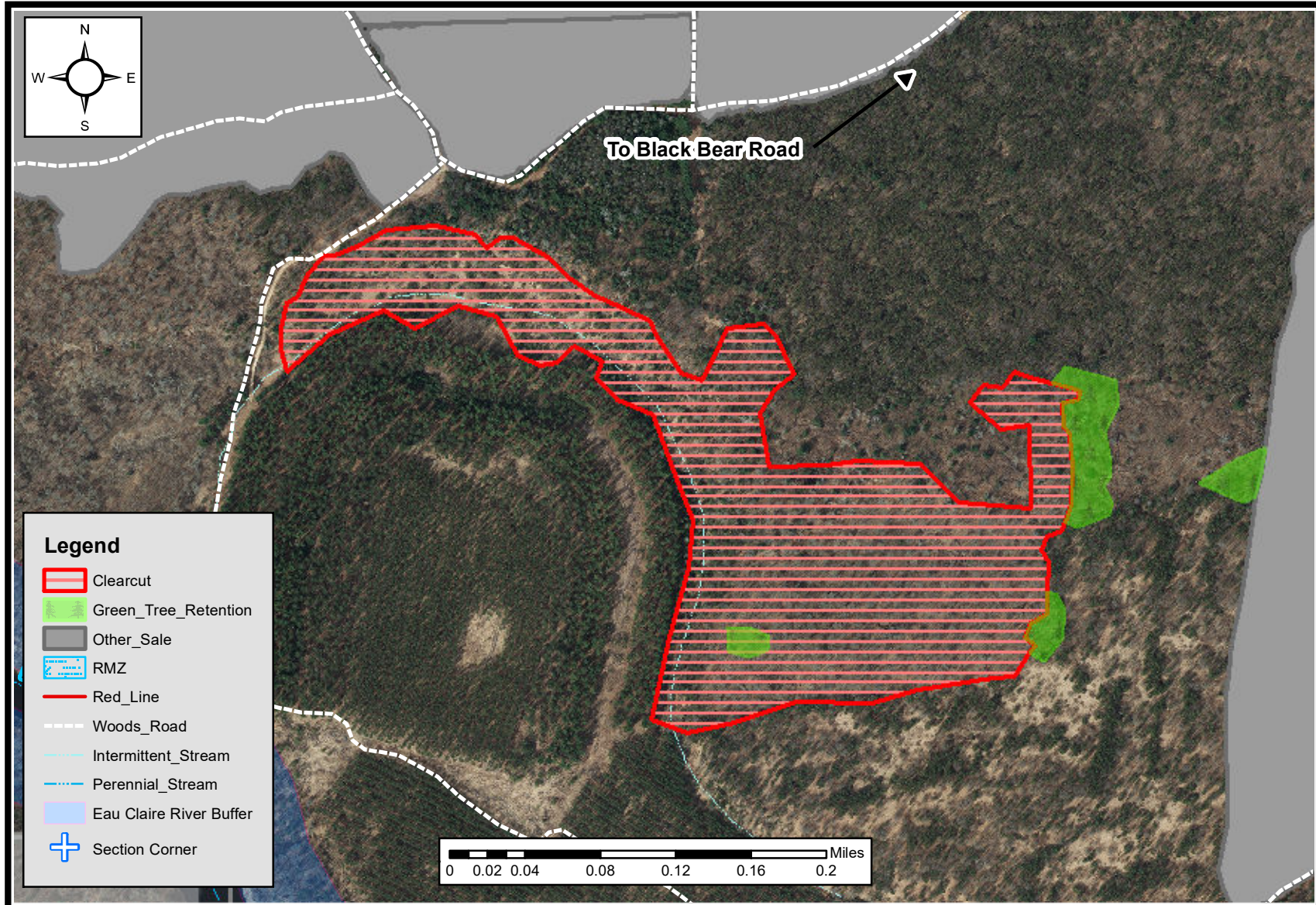


## Cutting Specifications:

1.	Sale is delineated by red and blue paint and obvious roads. Islands are marked with vertical Green Paint Lines.
2.	No equipment or slash is allowed within the Green Tree Retention areas.
3.	Sale is limited to dry or frozen conditions.
4.	<b>Clearcut: Harvest all stems 1 inch and larger except trees marked with green paint and islands</b>
5.	Opportunity for Spring/Summer harvest. No Oak wilt restrictions on this sale.
6.	All cut Pine products must be removed from the sale area within 2 weeks from May 15 <sup>th</sup> to August 15 <sup>th</sup>
7.	All roads and landings must be approved by the sale administrator
8.	All slash must be lopped and scattered within 2' of the ground and kept away from the base of residual trees

# Eau Claire County Forest

<b>Sale Name:</b> Black Bear Barrens			<b>Tract Number:</b> 18-23		<b>Estimated Volumes</b>			
<b>Twp:</b> 26N	<b>Range:</b> 6/7W	<b>Section:</b> 7/12	<b>Township:</b> Lincoln/Bridge Creek		<b>SPECIES</b>	<b>Pulp (tons)</b>	<b>Bolts (tons)</b>	<b>Logs (MBF)</b>
<b>Compartment:</b> 73		<b>Stand:</b> 13			Oak	500	-	35
<b>Soil:</b> Sand		<b>Topography:</b> Level			Jack Pine	130	-	-
<b>Acres:</b> 24		<b>Timber Sale #:</b>			Mixed Hwd	20	-	-
<b>Notes:</b>					<b>Sale Minimum Bid:</b>		\$7,635.00	



### Cutting Specifications:

1.	Sale is delineated by red paint
2.	No equipment or slash is allowed within the Green Tree Retention areas
3.	Sale is limited to dry or frozen conditions. No harvesting or road building from April 1 <sup>st</sup> to July 15 <sup>th</sup> due to Oak Wilt
4.	<b>Clearcut: Harvest all stems 1 inch and larger except Leave all White Pine, Red Pine, and Oak stems under 3 inches</b>
5.	On steep slopes, only harvest what is within reach from the top and bottom. Do not operate on slopes
6.	All Pine stumps must be sprayed according to contract from April 1 <sup>st</sup> to November 30 <sup>th</sup>
7.	All cut Pine products must be removed from the sale area within 2 weeks from May 15 <sup>th</sup> to August 15 <sup>th</sup>
8.	All roads and landings must be approved by the sale administrator