



# AGENDA

## Eau Claire County Highway Committee

**DATE:** Thursday, December 8, 2022 **TIME:** 7:30 a.m. CST

**LOCATION:** Eau Claire County Highway Department  
2000 Spooner Ave., Room 101  
Altoona, WI 54720

### WebEx Teleconference

**Join from the meeting link:**

<https://eauclairecounty.webex.com/eauclairecounty/j.php?MTID=m3b530a29d1527e9f883fd3d56f04a37f>

**Join by meeting number:**

Meeting number (access code): 2599 265 0195

Meeting password: PtMMgcRQ434

**Tap to join from a mobile device (attendees only):**

[+1-415-655-0001](tel:+1-415-655-0001),,[25992650195](tel:+1-415-655-0001)## US Toll

**Join by phone:**

+1-415-655-0001 US Toll

For those wishing to make a public or written comment, you must e-mail [ecchwy@eauclairecounty.gov](mailto:ecchwy@eauclairecounty.gov) at least 30 minutes prior to the start of the meeting. You will be called on during the public session to make your comments. **PLEASE MUTE DEVICES UPON ENTRY INTO MEETING.**

### Call to Order and Confirmation of Meeting Notice

1. Roll Call
2. Review/Approval of Past Committee Meeting Minutes (11/10/22) - Discussion/Action
3. Public Comment
4. InQuik Bridging Systems Presentation – Discussion
5. Spring Road Tour – Discussion/Action
6. Highway Report
  - Highway Commissioner Update – Jon Johnson
    - i. Leadership Development
    - ii. 2023 Strategic Goals
    - iii. WCHA Update & Board Member Vacancy
  - Operations Update – Brian Spilde
  - Engineering Update – Travis Pickering

PREPARED BY: Natalie Szews

PLEASE NOTE: Upon reasonable notice, efforts will be made to accommodate the needs of individuals with disabilities through sign language, interpreters, remote access, or other auxiliary aids. Contact the clerk of the committee or Administration for assistance (715-839-5106). For additional information on ADA requests, contact the County ADA Coordinator at 839-6945, (FAX) 839-1669 or 839-4735, TTY: use Relay (711) or by writing to the ADA Coordinator, Human Resources, Eau Claire County Courthouse, 721 Oxford Avenue, Eau Claire, WI 54703.

7. Review of Payment Vouchers (11/11/22 to 12/02/22) – Discussion /Action
8. Future Meeting Dates/Times/Agenda Items – Discussion/Action
9. Adjourn

PREPARED BY: Natalie Szews

PLEASE NOTE: Upon reasonable notice, efforts will be made to accommodate the needs of individuals with disabilities through sign language, interpreters, remote access, or other auxiliary aids. Contact the clerk of the committee or Administration for assistance (715-839-5106). For additional information on ADA requests, contact the County ADA Coordinator at 839-6945, (FAX) 839-1669 or 839-4735, TTY: use Relay (711) or by writing to the ADA Coordinator, Human Resources, Eau Claire County Courthouse, 721 Oxford Avenue, Eau Claire, WI 54703.



## MINUTES

**Eau Claire County | Committee on Highway**

**Thursday, November 10, 2022 | 7:30 a.m.**

**Hybrid Meeting**

**Eau Claire County Highway Department - Room 101 and WebEx Virtual Teleconference**

**Committee Members Present:** Chair Steve Chilson, Vice-Chair Nathan Otto, Larry Hoekstra, Judy Gatlin, Mark Beckfield

**Staff/Others Present:** Highway Commissioner Jon Johnson, Assistant Commissioner Brian Spilde, Operations Manager Chris Dahlby, Engineer Travis Pickering, Administrative Associate III Natalie Szews, Risk Manager Sonja Leenhouts, Fiscal Supervisor Kyle Welbes, Finance Director Norb Kirk, Corporation Counsel Sharon McIlquham

1. **Meeting called to order by Chairman Chilson at 7:30 a.m.**
2. **Roll Call**
3. **Review/Approval of Past Committee Meeting Minutes (10/13/22) – Discussion/Action**
  - Supervisor Gatlin motioned to approve. Motion carried 5-0.
4. **Public Comment –None**
5. **Car Killed Dead Deer Removal – Discussion**
  - Reviewed dead deer removal process on state highways. The County notifies the state contractor to remove dead deer. If the state contractor cannot safely pick up dead deer, the County must move it to a safe spot so the contractor can come back to pick it up. If there's a safety concern, the County will move dead deer into the ditch.
    - The County moving dead deer for the state contractor to pick up is being charged to routine road maintenance when it should be charged through the state contractor. The State takes bids for contract to remove dead deer, and the County may want to take the deer removal contract instead, but it would cost about \$25,000 to do a good job.
    - Dead deer removal process on state highways can take a long time. It's at the contractor's discretion to determine if the dead deer are in a safe spot, so dead deer may be moved multiple times before they are picked up by the contractor. If this is the case, it can take 2-3 weeks for deer to get picked up by the contractor, but the County gets complaints.
    - There are also safety concerns due to contractor not being equipped with proper safety equipment.
    - Dead deer removal could possibly a DNR concern since they are responsible for deer. Previously the DNR was responsible for the dead deer removal contract, but dead deer were not getting picked up. WIDOT is responsible for removal contract.
  - On County highways, dead deer are removed from roadway and put in the ditch to decompose. In urbanized areas and in certain situations, dead deer are taken to another location to decompose.
6. **New Highway Facility Operational Efficiencies - Discussion**

- Trucks will be stored inside new facility. This will result in better vehicle inspections and faster response time since truck operators will not need to de-ice and remove snow from trucks sitting outside.
- New wash-bay will help extend life of trucks and reduce repair costs.
- Improved logistics and organization at new facility, and improved working environment for admin and fiscal staff.

## **7. Vehicle Registration Fee Funding Allocation – Discussion**

- Reviewed Vehicle Registration Fee (VRF) Ordinance. VRF can only be used for highways and bridges for the Highway Department. State-registered vehicles are exempt from VRF.

## **8. Highway Report**

### **• Highway Commissioner Update – Jon Johnson**

- Winter Tech Talk – had an employee help present on brine process. Counties learned about brining process and the benefits of using brine and reducing salt usage. Possibly host this event at the new highway facility in the future.
- Discussed difficulties with hiring and retaining employees.
  - Every county is struggling to fill positions. New hires are not familiar with highway industry, and they need to get help with getting CDL and get trained on the job. Working on creating a contract agreement to have employees pay back CDL training if they leave before a certain amount of time.
  - Reduced efficiency due to training needed. Need to schedule jobs based on number of experienced employees, not the total number of employees due to lack of experience and training needs.
  - Exit interviews – Brian working with HR team on exit interviews and reasons for employees leaving.
  - Experienced staff is tied up with training, which can cause frustration and reduce efficiency. Have a meeting next week to go over operational priorities.
  - Looking into highway maintenance training programs for new employees.
- Wind damage to salt shed at new highway facility is going to cause a four-week delay.
- Public Involvement Meeting for CTH F/State St. project.
- Grant applications due in March for projects.

### **• Operations Update – Brian Spilde**

- Done with construction season and getting trucks ready for first snowfall. Starting maintenance brushing. Will be brushing Town of Union area and future road project areas.
- Going through operational priorities and looking at training program.
- Mowing is completed. Will be looking at what areas need to be mowed after weed spraying for next year.

### **• Engineering Update – Travis Pickering**

- Continuing to work on designs for 2023 projects.
- Large part of surveys for 2024 projects are completed.
- Bridge RFPs were sent out last week. Receiving good feedback on contracts.
- InQuik Bridging Systems bridge for CTH V is moving forward. Met with InQuik president and Ayres representative last week, and working on getting finalized quote and scope for project. This new bridge system could save about \$180,000 per bridge and it would take about a week to complete the bridge.

**9. Review of Payment Vouchers (10/14/22 to 11/04/22) – Discussion /Action**

- Fuel costs have increased and there could be a diesel fuel shortage.
- Supervisor Gatlin motioned to approve. Motion carried 5-0.

**10. Future Meeting Dates/Times/Agenda Items**


- Future agenda items:
  - InQuik Bridging Systems presentation
  - Spring Road Tour
- Next meeting: Thursday, December 8, 2022 at 7:30 a.m.

**11. Adjourn at 8:48 a.m.**

Respectfully submitted,

*Natalie Szews*

Natalie Szews, Administrative Associate III  
Eau Claire County Highway Department



# InQuik<sup>®</sup>

BRIDGING SYSTEMS



## CATALOG

Patent Nos. 10323368, 10619315 and 11053647



Please note - this document is for information purposes only & is subject to change.

# Contents

<b>The InQuik Bridge</b>	<b>4</b>
<b>Bridge Range</b>	<b>5</b>
InQuik Integral Bridge	6
InQuik Integral Bridge Features & Benefits	6
Deck Dimensions	7
Bridge Width Ranges	7
Load Rating & Deck Spans	8
Formwork Cladding Material	9
Curb and Barrier Options	10
Optional Features	10
<b>Bridge Abutment / Wing Wall / Foundation</b>	<b>11</b>
Abutment, Wing Wall & Foundation Features	11
Abutment & Wing Wall Options	12
Foundations	13
<b>Multi-Span Bridges &amp; Structures</b>	<b>14</b>
<b>InQuik IQ14 Bridge</b>	<b>15</b>
<b>Custom Design Features</b>	<b>16</b>
<b>Sample Orders</b>	<b>17</b>
40 ft. Dual-Lane Integral Bridge	17
45 ft. Dual-Lane Integral Bridge	18
80 ft. 2-Span Dual-Lane Semi-Integral Bridge	19
21 ft. Single Lane IQ14 Bridge	20
<b>InQuik Bridge Timeline</b>	<b>21</b>

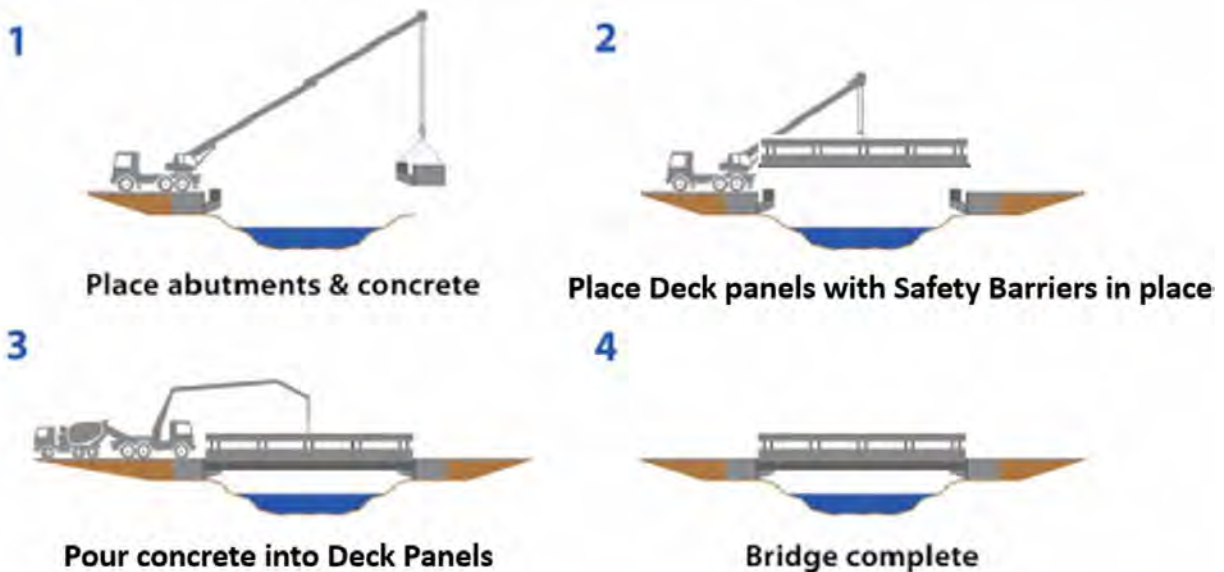


# The InQuik Bridge

The InQuik® bridge is a **semi-modular** system, where the integrated steel formwork and reinforcing components are prefabricated off-site, then completed when concrete is poured on-site to form a single homogeneous mass.

The bridge panels are **self-supporting** and the formwork is aesthetic and sacrificial, so beneath the steel form is a conventional **cast-in-place poured reinforced concrete bridge**, with all the benefits that provides. The InQuik product range includes **abutments, wing walls, headstocks, blade piers** and **deck panels**.

## Installation process for an InQuik bridge:

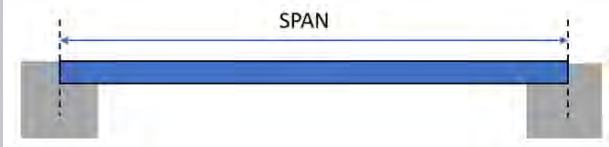
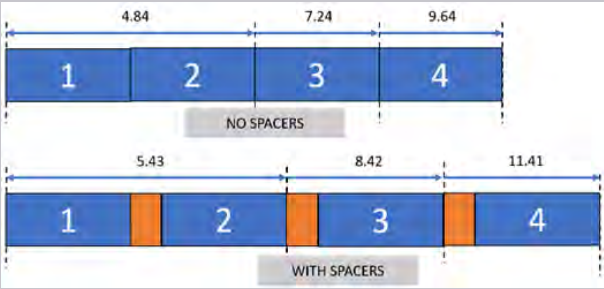


## Key Features

- No temporary formwork supports needed.
- Bridge construction occurs from above, with minimal need to work under the bridge, improving worker safety and reducing environmental impact.
- The semi-modular deck panels are placed side-by-side to give the desired bridge width, then concrete is poured to create a homogeneous slab.
- Can create multi-span bridge structures with pier/bent cap components.
- The InQuik bridge structure can be designed for a minimum 100-year service life.
- InQuik abutments, wing walls, bent caps and blade piers are constructed using a similar semi-modular method as the deck.
- Single span lengths range between 21-61ft, with engineering certified by ARUP USA to the United States Bridge Design Standards, AASHTO LRFD 9th Edition Bridge Design requirements.
- Reduced long-term maintenance requirements than precast through eliminating longitudinal deck joints, and the integral design also removes tie-downs and bearings.

# Bridge Range

## INQUIK BRIDGE RANGE

Product	IQ14	IQ27	IQ40	
Description	Culvert Replacement	Standard 27 1/2" deep deck	Standard 40 1/4" deep deck	Explanatory Comments
Span* (feet)	21'	30' 40' 45'	53' 61'	As measured from centreline of 3ft abutment. 
Standard Width* (feet)	16' (18' with spacer)  24' (27'-3/4" with spacers)  31'-3/4" (37'-5" with spacers)	16' (18' with spacer)  24' (27'-3/4" with spacers)  31'-3/4" (37'-5" with spacers)	16' (18' with spacer)  24' (27'-3/4" with spacers)  31'-3/4" (37'-5" with spacers)	All standard InQuik deck panels are 8ft wide and are placed side by side with ~2.0" overlap between the deck panels.  Extension spacers may be placed between the panels to increase the width by 21 2/3" per join.
Design Load	HL-93	HL-93	HL-93	InQuik Offer bridge designs for HL-93 load ratings and special permit vehicles, as required.
Deck Depth* (inches)	14 1/2"	27 1/2"	40 1/4"	See "Deck Dimensions" section below for more information.

\* Nominal sizing - rounded to nearest 1/4 inch. See construction manual for exact measurements.

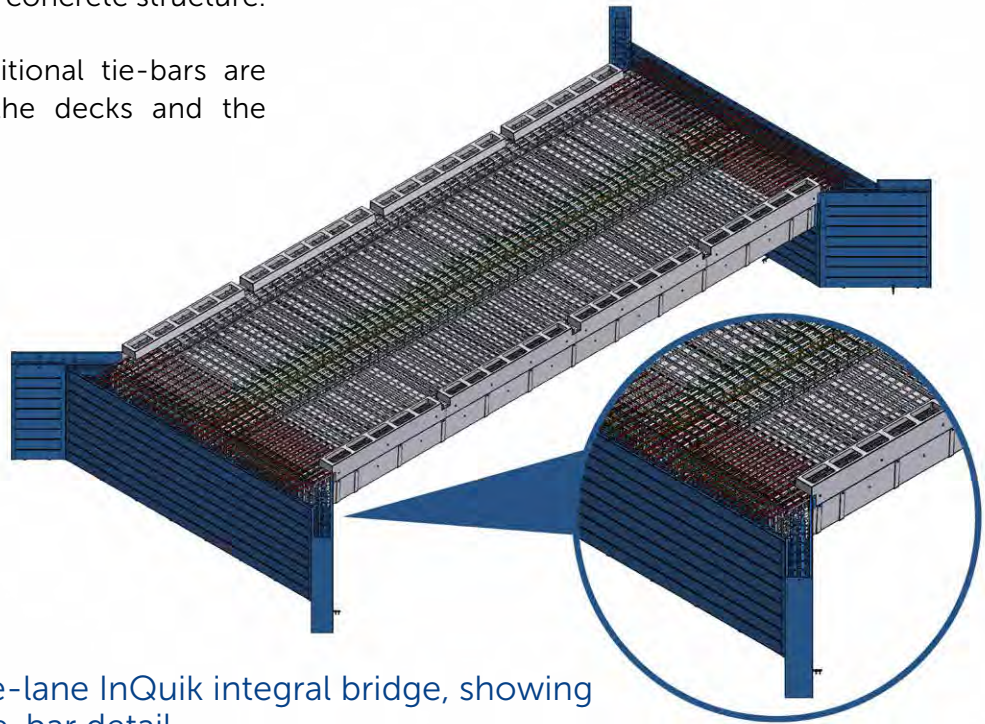


## InQuik Integral Bridge

Though the InQuik system can be simply-supported on bearings, a major benefit of pouring the concrete fully on-site is that it allows the construction of a fully integral bridge, where the bridge deck and top of the abutments are cast at the same time to make an integrated concrete structure.

Prior to casting, additional tie-bars are placed to connect the decks and the abutments on-site.

This results in a very strong and stable structure, providing greater damage resistance to flooding and earthquake events, and eliminates the need for bearings and tie-downs (and the associated long-term maintenance requirements).



Design for a single-lane InQuik integral bridge, showing deck-abutment tie-bar detail.

## InQuik Integral Bridge Features & Benefits

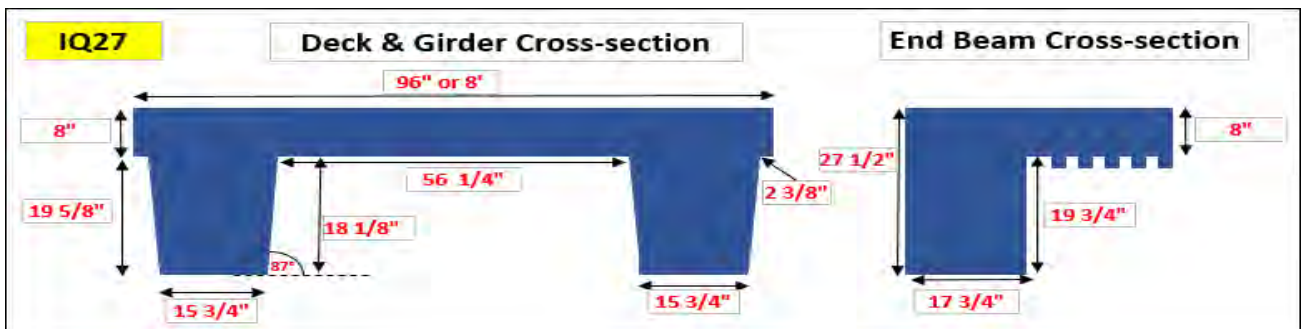
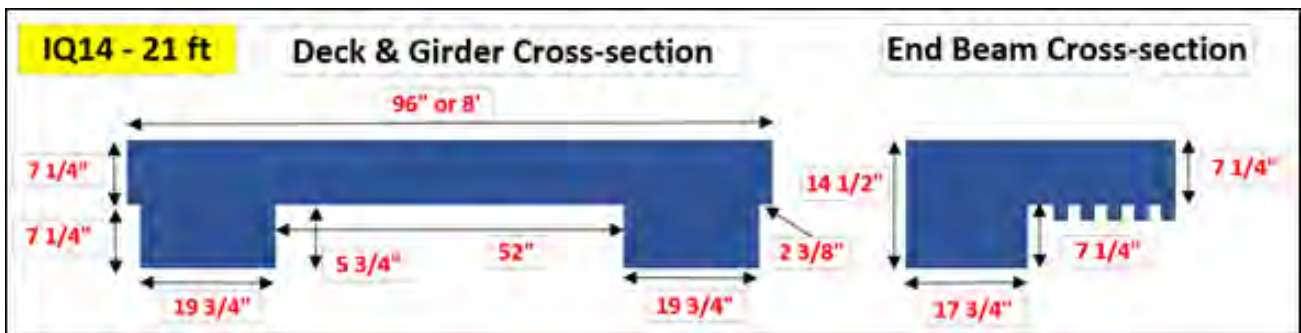
FEATURES	BENEFITS
Pre-engineered, pre-certified, pre-fabricated	Simple and fast on-site installation
No bearings, tie-downs or joints	No long-term structural maintenance over design life
Pre-fabricated components with concrete poured on-site	Reduced OSHA risk, reduced contractors, reduced installation time on-site
Lightweight components	Reduced OSHA risk, small local crange, ease of transportation
No joints in structure	No joints to allow salt and water ingress
Self-supporting modular structure	No temporary supports required
Faster, simpler, safer with no maintenance	Reduced project costs & reduced 'whole of life' costs

## Deck Dimensions

All standard InQuik deck panels are 8ft wide, and are placed side-by-side with ~2" overlap between the deck panels (eg: a bridge that is 2 panels wide would therefore be ~16ft in width). The top deck slab is ~8" deep, and the center deck formwork is stiffened by 1½" deep corrugations.

Note that the deck effective spans are defined from the centreline of the standard 36" wide abutments (thus, the clear span is 36" less than the effective span or 18" less on each side).

InQuik bridges are designed to use 5 KSI concrete, except for the 45ft deck panel, which needs 6 KSI concrete unless otherwise approved.





## Live Loading Model & Deck Spans

The InQuik deck panels have been designed to satisfy the live load rating for HL-93 (AASHTO LRFD 9th Edition) bridge design specifications.

\* The simply-supported deck design is 0.3-0.5t heavier than the integral design.

SPAN (ft)	LIVE LOADING MODEL	MASS (INTEGRAL) (t)	APPROX. CONCRETE VOLUME (yd <sup>3</sup> )
21	HL-93	2.1	8.0
30	HL-93	3.0	11.6
40	HL-93	3.9	15.3
45	HL-93	5.3	17.3
52.5	HL-93	8.6	30.5
60.7	HL-93	9.8	34.8

## Formwork Cladding Material

The formwork is a permanent fixture and remains in place, providing a protective barrier for the concrete against corrosive influences from the environment that can cause concrete degradation.

The formwork also has additional benefits which add to the life of the structure. There are three options for the deck formwork cladding: Zinc Alloy Coated Steel, Galvanized Steel, and Stainless Steel, which each have different corrosion behaviour.

The most suitable cladding component would be selected based on its corrosion performance for aesthetic purposes in each bridge's specific environment. Other materials would require a special order.



### WEATHERING STEEL

Weathering steel is a high strength formwork cladding material that develops a stable oxide layer on the surface of the steel, known as the 'patina'. When used in the appropriate environment, the patina enhances the corrosion resistance of the steel compared to conventional uncoated steels, effectively 'weathering' the steel in a natural way. Once fully formed and weathered the appearance is usually dark brown to a purple colour that nicely blends with the environment. Weathering steel has been used since the 1930s in railway coal wagons, bridges, facades, and many architectural features such as sculptures and landscaping. When designed and detailed correctly, considering the environmental factors that govern its use, it has exhibited enhanced corrosion resistance. This means weathering steel formwork cladding may be used without the need for protective coating systems, significantly reducing both initial fabrication and ongoing lifetime maintenance costs.

### ZINC ALLOY COATED STEEL (STANDARD FOR INQUIK)

Zinc Alloy Coated Steel is steel coated with an alloy of zinc, aluminium and magnesium. This coating has been shown to have far superior corrosion resistance properties to zinc galvanised steel, particularly in salty environments. Due to the high corrosion resistance, less material is needed to coat the steel, and it achieves a superior result. In a marine environment, the coating loses  $\sim 0.3 \mu\text{m}/\text{year}$  in thickness. Some proprietary coatings are certified for use in a C5 environment.

### STAINLESS STEEL

For bridge projects where aesthetics is important in the long-term, and/or the bridge is to be constructed in a highly corrosive environment (eg: tropical, industrial, etc.), stainless steel cladding can be used, which has extreme resistance to corrosion. For 316 grade stainless steel, the estimated time for pitting to penetrate 0.04" is 260 years in a marine environment (the steel cladding is 0.1" thick), implying the formwork is likely to outlast the bridge structure.

## Curb and Barrier

Standard InQuik bridges have a flat site or a castellated curb. Standard kerb design is 6" high, with a width of 8".

Custom designs requiring a wider kerb can be accommodated if required.

Appropriate fixings and connections for TL2 to TL5 barriers can also be included in the deck design, with a standard barrier design available for side and top-mounted low performance barriers.

The InQuik system is certified for barriers, and can accommodate a customised connection system as required.

Standard InQuik bridges include low performance Thrie-beam or regular performance DOT style barrier

BARRIER STYLE	PERFORMANCE RATING	CURB FORMAT
Thrie-beam	TL2-TL3 Standard bridge guardrail	Flat side (no curb)
DOT-style steel barrier	TL4-TL5	Castellated curb (15.7" wide)
DOT-style steel barrier	TL3-TL4	Castellated curb (13.8" wide)
Concrete	TL4-TL5	Flat side (no curb)



# Bridge Abutment/ Wing Wall

The InQuik abutment length is determined by the width of the bridge.

The abutment height (to the deck shelf) is determined by the site conditions.

The size and type of foundation drives the pile openings in the abutment.

InQuik prefer to work with standard designs where possible to optimize design and manufacturing processes. However, bridges do have variable site-specific needs, and so we offer non-standard features as well. If a project requires any features or dimensions not listed below, we may be able to provide for them in the design as well.

PRODUCT	ABUTMENT
STANDARD FEATURES	<ul style="list-style-type: none"> <li>• Default height is 3'-11" (and increases up in 8" increments), to the underside of the deck</li> <li>• Lengths are driven by the standard deck widths</li> <li>• Thickness 3ft or 4ft (the size of the foundations and/or requirement for an approach slab will determine the required thickness)</li> </ul>
NON-STANDARD FEATURES	<ul style="list-style-type: none"> <li>• Crossfalls are typically built into the abutment shelf</li> <li>• One-way crossfall on a single lane bridge can be incorporated into the blinding layer</li> <li>• Non-standard abutment heights</li> </ul>
PRODUCT	WING WALLS
STANDARD FEATURES	<ul style="list-style-type: none"> <li>• Length: 9ft</li> <li>• Height = abutment height + depth of deck panel</li> <li>• Angle: 45° or 90°</li> <li>• Square profile</li> <li>• Symmetrical layout</li> </ul>
NON-STANDARD FEATURES	<ul style="list-style-type: none"> <li>• 18" wide (if needed for structural reasons)</li> <li>• Tapered profile</li> <li>• Non-symmetrical layout</li> </ul>
PRODUCT	FOUNDATIONS
STANDARD FEATURES	<ul style="list-style-type: none"> <li>• Driven steel piles (H-piles or Circular Hollow Sections) at 5'-3" maximum spacings</li> <li>• Concrete piles (driven or bored) at 10'-6" spacings</li> <li>• Mass pour or strip footing</li> </ul>
NON-STANDARD FEATURES	<ul style="list-style-type: none"> <li>• Pile spacings must be multiples of 5'-3" due to the internal structure of the abutment</li> </ul>



## Abutment Options & Features

A standard InQuik abutment is 3ft. wide with a flat deck shelf. Certain projects may require a cross-fall, which depending on the width of the bridge and the size of the cross-fall, could be incorporated into the blinding layer (for a one-way crossfall), formed on-site by mounding up deck concrete (for crowned crossfall), or incorporated into the abutment shelf.

If an approach slab is required, a 1ft-wide pocket is incorporated into the abutment, so that the approach slab can be placed on top. For integral bridges this increases the abutment thickness to 4ft.



## Wing Wall Options & Features

Where a barrier is required to attach to a guardrail, 45 degree wing walls are recommended practice. If a 90 degree wing wall is required, barriers will need to be customised to align with the wing walls.

## Foundations

The InQuik abutments are suitable for all major bridge foundation types. The best foundation for a particular bridge will depend on site-specific conditions (consult your engineer), and the foundation type affects the abutment design parameters:

- Driven steel H-piles have a maximum spacing of 5'-3".
- Bored or precast concrete piles, and screw piles, have a maximum spacing of 10'-6".

The standard InQuik abutment height starts at 3'-11" and increases up in 8" increments. If a height greater than this is required, a thicker blinding slab can be used. Higher abutments can be made as a custom design.



# Multi-Span Bridges & Structures

In addition to single-span bridges, the InQuik system can be used for multi-span bridges, wharves, jetties, elevated roads and rail crossings. InQuik has developed its own pier/bent cap and bladepier designs, which are similar in construction to the abutment design.

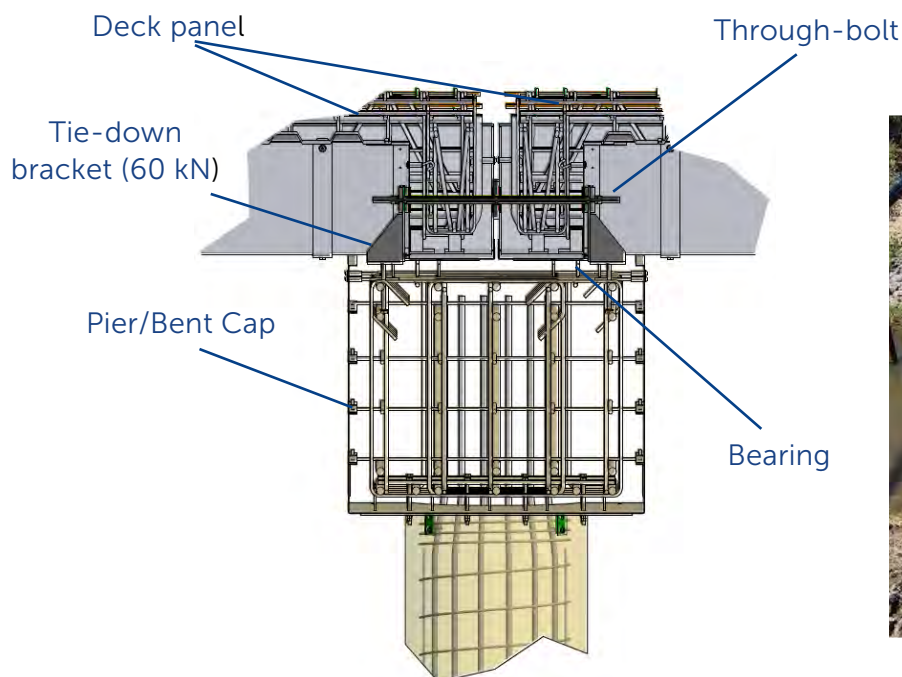
Currently, InQuik pier/bent caps and bladepiers have a simply supported articulation with the deck panels on top. As such, they require bearings and tie-downs between the intermediate support and the deck panels.

A fully integral InQuik pier/bent cap/bladepier design is currently in development.

PIER/BENT CAP DIMENSIONS	FOUNDATIONS
3'-3" (H) x 4' (W)	<ul style="list-style-type: none"> <li>• Common foundation types include bored concrete piles and driven steel piles (UC or CHS)</li> <li>• Pile collars can be used to support the headstock on an embedded concrete pile if required</li> </ul>

For multi-span bridges, the decks can be tied down to the bent cap using brackets. Elastomeric strip bearings are generally used for the pier/bent cap shelf, as well as buffer bearings for the downstream side of the bridge. Through-bolts to tie together adjacent spans are also typically used to help transfer loads between the spans.

All simply supported decks have a 4" gap under the end beam, so that a jack may be used to lift the deck for bearing replacement in the future.



Cross-section of an InQuik pier/bent cap showing possible deck connection detail

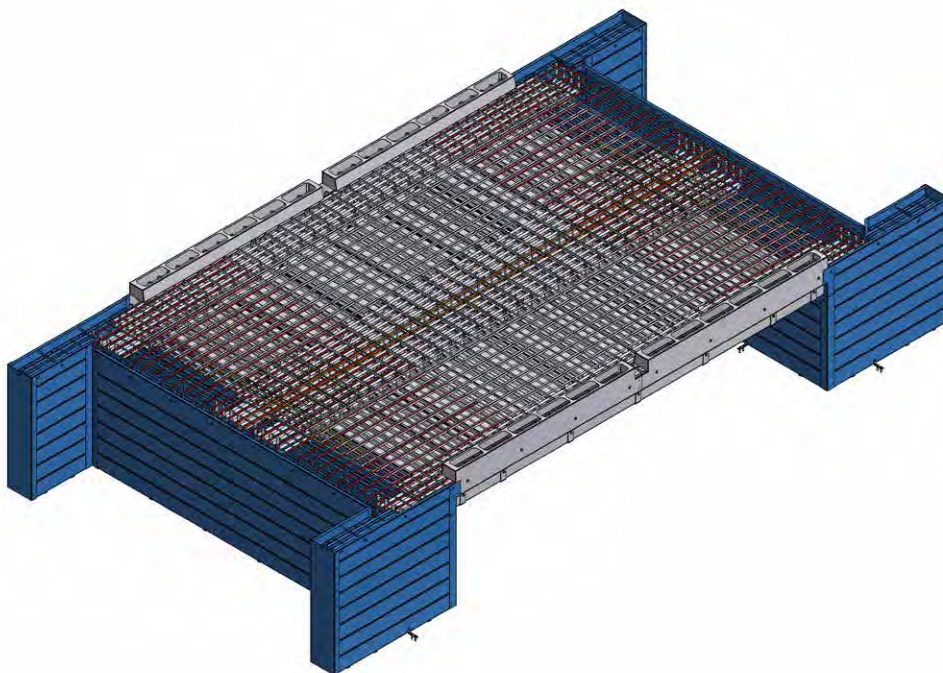
# InQuik IQ14 Bridge

The InQuik IQ14 bridge has been developed to address the need to replace culverts and small bridges by local councils, farmers and primary producers.

This short-span bridge product has been specifically designed with a 14" deep deck profile for ease of water afflux, and is available in a 21ft span with the same bridge widths as the IQ27 design.

The IQ14 has a fully integral design, and is load rated to HL-93.

<b>DECK SPAN</b>	<ul style="list-style-type: none"><li>• 21ft (19ft from clear span - face of abutment)</li></ul>
<b>WIDTH</b>	<ul style="list-style-type: none"><li>• As per standard IQ27 bridges</li></ul>
<b>ABUTMENT HEIGHT</b>	<ul style="list-style-type: none"><li>• Standard 3'-11"</li><li>• Increasing in 8" increments</li></ul>
<b>WING WALLS</b>	<ul style="list-style-type: none"><li>• Wing walls optional</li><li>• Length: 9ft</li><li>• Angle to abutment: 45° or 90°</li></ul>
<b>BARRIERS</b>	<ul style="list-style-type: none"><li>• Side-mounted TL2-TL3 barrier (optional)</li></ul>



# Custom Design Features

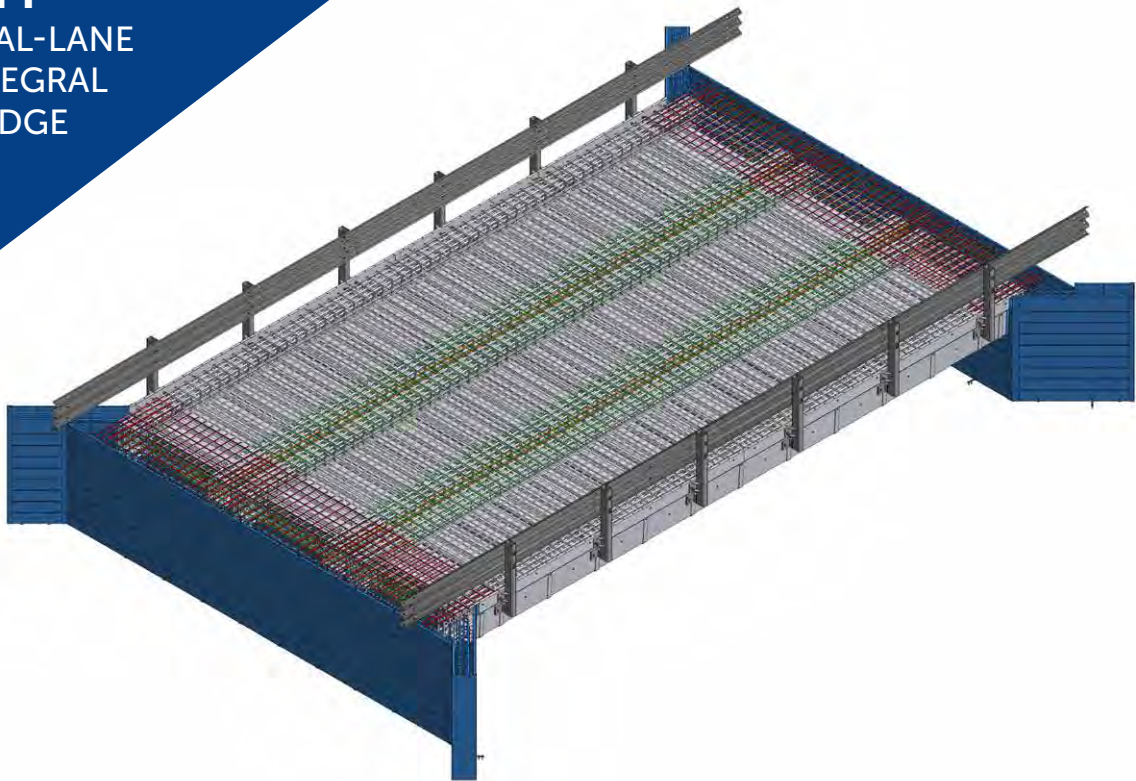
In addition to the standard InQuik bridge components, we can also provide custom design features at additional cost.

<b>ABUTMENT HEIGHTS</b>	<ul style="list-style-type: none"><li>• Abutments higher than 8ft may be possible, but require project specific engineering verification</li></ul>
<b>WING WALLS</b>	<ul style="list-style-type: none"><li>• Custom wing wall arrangements may be possible, but require project specific engineering</li></ul>
<b>MULTI-SPAN PIER/BENT CAP</b>	<ul style="list-style-type: none"><li>• If crossfall is required it can be designed into the pier/bent cap. It will sit flat on the piles.</li></ul>
<b>BARRIER DESIGN</b>	<ul style="list-style-type: none"><li>• We can incorporate non-standard barrier designs, according to site requirements. The InQuik system is suitable for up to TL5 performance barriers, but unusual barrier designs may require engineering verification</li></ul>
<b>DECK SLOPE</b>	<ul style="list-style-type: none"><li>• For wider bridges and larger crossfalls, one-way or crowned crossfalls may be incorporated into abutment shelf</li></ul>
<b>SERVICES</b>	<ul style="list-style-type: none"><li>• Service brackets can be incorporated underneath the bridge for simply-supported designs only.</li><li>• For integral bridges, services can be mounted on a bracket at the side of the bridge</li></ul>



# Sample Orders

## 40FT DUAL-LANE INTEGRAL BRIDGE



3-panel, dual-lane bridge with side-mounted barrier

This single-span bridge has a HL-93 load rating, and uses 3 × 8ft-wide deck panels to give a total deck width of 24ft. The abutment is 3'-11" high with a 27½" pocket for the approach slab. This bridge has side-mounted barrier posts attached to a Thrie-beam guardrail.

QTY	InQuik Components	Total Mass (t)	Concrete (yd <sup>3</sup> )
3	40ft. Zinc Alloy IQ27 HL-93-rated deck panel (8x40ft)	14.2	39.9
2	Double-lane abutment (24ftx4ft)	3.6	28.5
1	Side-mounted barrier posts and Thrie-beam guardrail	1.1	
1	Deck-abutment integration tie-bar set	1.2	

**TOTAL: 20.1 68.4**

**45FT  
DUAL-LANE  
INTEGRAL  
BRIDGE**

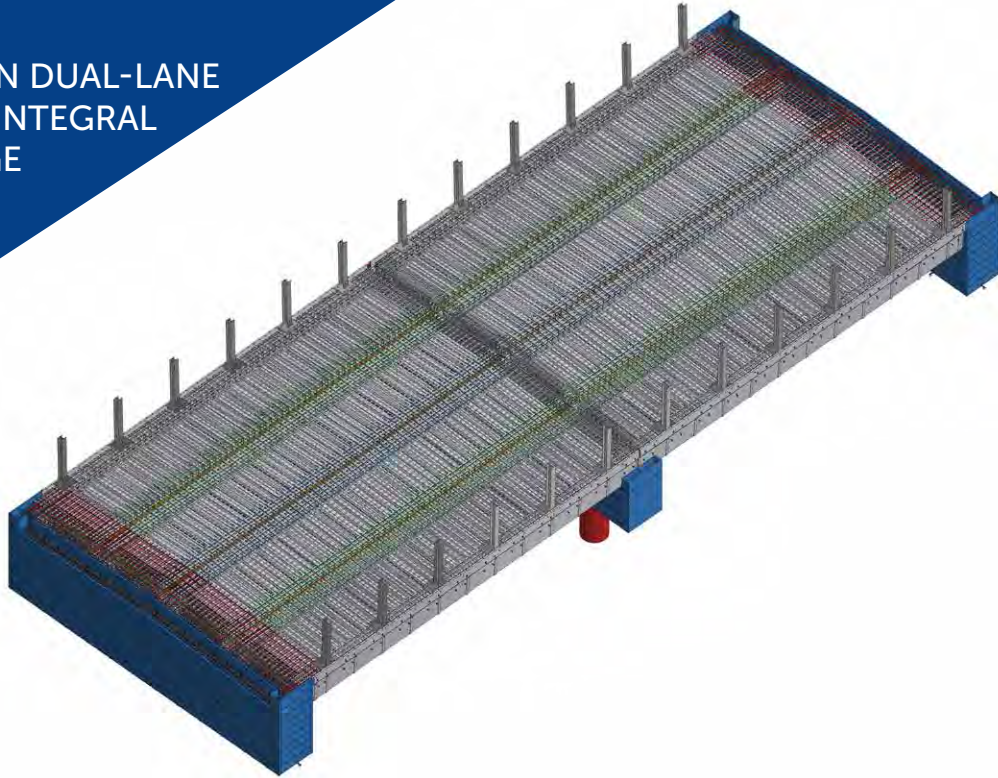


3-panel, dual-lane bridge with side-mounted barrier

This single-span bridge has an HL-93 load rating, and uses 3 × 8ft-wide deck panels with 2 × 21<sup>2</sup>/<sub>3</sub>" in-fill spacer sections between the panels, giving a total deck width of 27'-<sup>3</sup>/<sub>4</sub>". The abutment is 6ft high with a 27<sup>1</sup>/<sub>2</sub>" pocket for the approach slab, and the wing walls are 8'-3" high (to the height of the deck), 8'-11"ft long and angled at 45° to the abutments. The foundations are H-piles. This bridge has side-mounted barrier posts attached to a Thrie-beam guardrail.

QTY	InQuik Components	Total Mass (t)	Concrete (yd <sup>3</sup> )
3	45ft Zinc Alloy IQ27 HL-93 rated deck panel (8 × 45ft)	17.4	} 50.1
2	21 <sup>2</sup> / <sub>3</sub> " x 45ft in-fill tray section with reinforcing bars		
2	Double-lane abutment (27 <sup>3</sup> / <sub>4</sub> "x6ft) + 45° wing wall (9ft) set	1.0	
1	Deck-abutment integration tie-bar set	8.1	62.3
		1.9	
<b>TOTAL:</b>		<b>28.4</b>	<b>112.4</b>

**80FT  
2-SPAN DUAL-LANE  
SEMI-INTEGRAL  
BRIDGE**



**Multi-span dual-lane semi-integral bridge with steel regular performance barrier**

This dual-lane, 2-span bridge has a HL-93 load rating and is 80ft long. Each span uses 4 × 8ft-wide deck panels with 1 × 5½" in-fill spacer sections between the centre panels, giving a total deck width of 32'-6". The integral abutments are 3'-11" high, with an approach slab pocket in the backwall. The deck is simply supported over the headstocks using elastomeric bearing strips. This bridge has a regular performance steel barrier, and the foundations are H-piles with concrete collars.

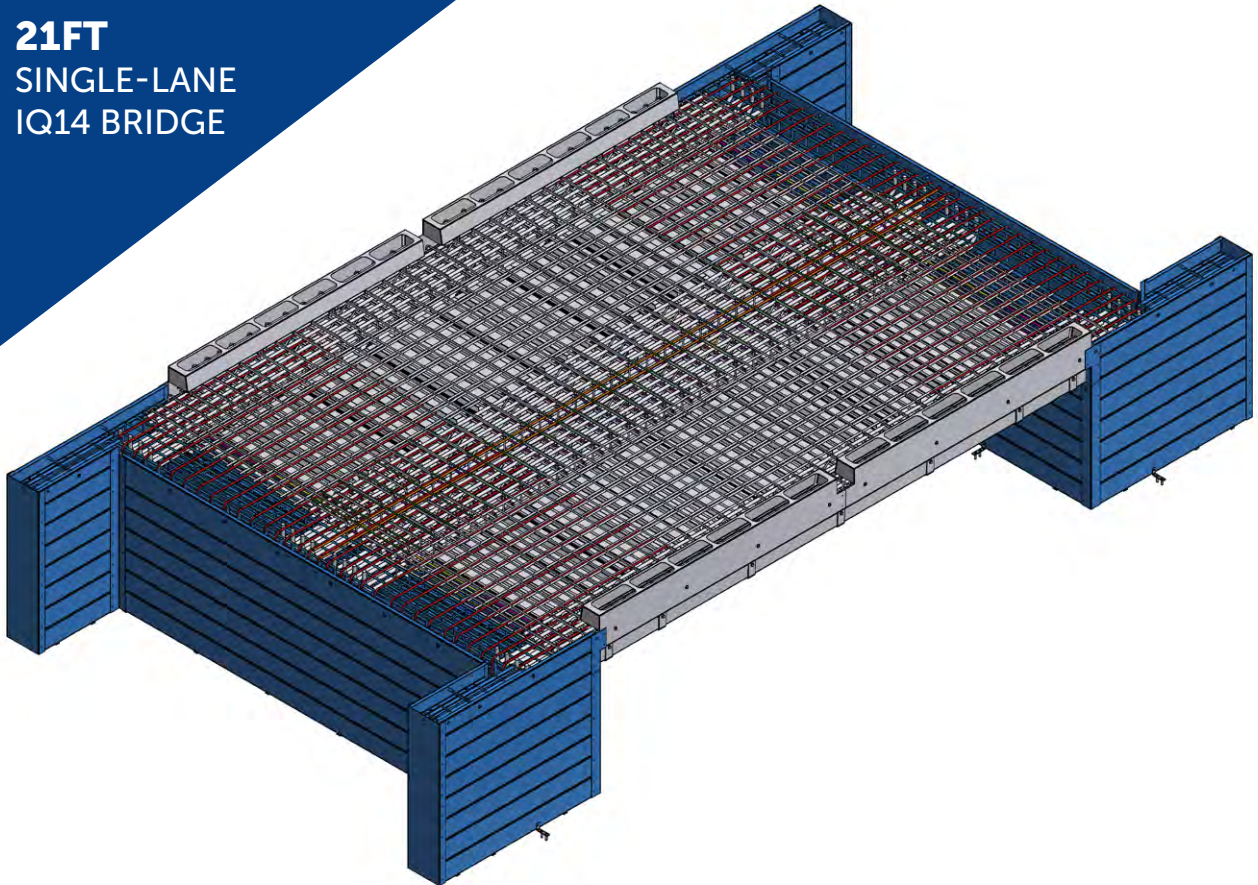
This bridge had side-mounted brackets supporting services.

QTY	InQuik Components	Total Mass (t)	Concrete (yd <sup>3</sup> )
8	40ft Zinc Alloy IQ27 semi-integral HL-93 rated deck panel (8 × 40ft)	18.1	61.5
2	Integral abutment (32'-6" x 3'-11") with approach slab pocket	5.7	33.4
1	Bearing bent cap (32'-6" x 4' x 4')	4.2	16.1
16	Elastomeric bearings strips (7'-10" long)	2.8	
1	Deck-abutment integration tie-bar set		
1	Assembly components (through-bolts, fasteners, etc)		

**TOTAL: 30.8 111.0**



**21FT  
SINGLE-LANE  
IQ14 BRIDGE**



21ft-span single-lane IQ14 bridge with castellated curb

This single-lane, 21ft-span bridge has an HL-93 load rating, with 2 × 8ft-wide deck panels that give a total deck width of 15'-9". The abutment is 4ft high with a 14½" pocket for the approach slab, and the wing walls are 5'-2" high (to the height of the deck), 6ft long and angled at 90° to the abutments. The deck has castellated curbs.

QTY	InQuik Components	Total Mass (t)	Concrete (yd <sup>3</sup> )
2	21ft Zinc Alloy IQ14 integral HL-93 -rated deck panel (8 × 21ft)	2.6	24.9
2	Integral abutment (15'-9" × 4') + 90° wing wall (5'-11") set	3.0	51.5
1	Deck-abutment integration tie-bar set	0.5	

**TOTAL: 6.1 76.4**

# InQuik Bridge Timeline

## Customer

## InQuik

Design Basis report - project scope

- Design will typically require Geotechnical report, flood study, traffic volume data, survey detail and environmental impact report
- Global bridge design details the bridge foundation and scour protection required.
- REF - Review of Environmental Factors - Safety in Design assessment
- Ensure all necessary approvals have been submitted and approval time-frame known.

Global Design/Structural Plans

Accept quote, give purchase order

Sign contract, pay deposit

Arrange site preparation works (earthmoving, foundations, etc.)

Abutments/wing walls installed and concrete poured (~1-5 days)

Deck panels installed (~1-2 days)

1st deck concrete pour (~1 days)

2nd deck concrete pour (~1 day)  
[only for some deck designs]

Light traffic after deck concrete reaches 3.5 KSI (~7 days)

Unrestricted traffic after deck concrete reaches design strength (usually 5 KSI) (~28 days)

Quote sent to customer

Send sales contract & deposit (50%) invoice

Counter-sign contract, initiate production

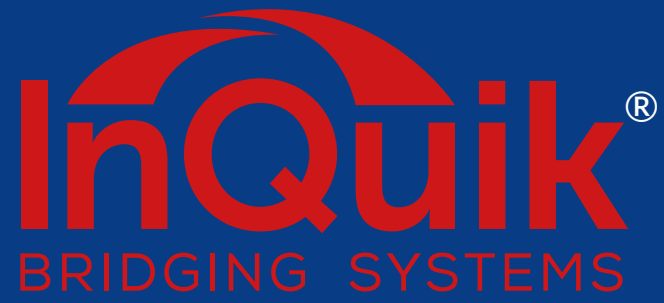
Liaise with customer for estimated delivery date

Abutments/wing walls delivered

Deck panels delivered  
Final invoice sent

Upon project completion, supply Certificate of Compliance





 +1 (866) 249-9661  [sales@inquikbridge.com](mailto:sales@inquikbridge.com)

 [www.inquikbridge.com](http://www.inquikbridge.com)

PAYMENT AUTHORIZATION SIGNATURE PAGE

Batch No: 22-001799

Payment Total: \$ 1,988,695.40 ✓

Check Issuance Date: 11/11/2022

Entered \_\_\_\_\_

Reconciled \_\_\_\_\_

Posted \_\_\_\_\_

Highway Commissioner Jon Johnson

\_\_\_\_\_

Assistant Commissioner Brian Spilde

\_\_\_\_\_

Fiscal Supervisor Kyle Welbes

\_\_\_\_\_

Accountant Kelsey Weigel

*Kelsey Weigel*  
\_\_\_\_\_

HIGHWAY COMMITTEE

Steve Chilson, Chair

\_\_\_\_\_

Nathan Otto, Vice-Chair

\_\_\_\_\_

Judy Gatlin

\_\_\_\_\_

Mark Beckfield

\_\_\_\_\_

Larry Hoekstra

\_\_\_\_\_

County of Eau Claire

Report Date 11/09/22 08:36 AM

Payment Request Edit

FPEDT01B

Report Parameters

Print Options

Print Option:	Posted & Unposted
Print Accounting:	Yes
Print \$0 Net Checks:	Yes
Print Approval Information:	No
Include Payments With Printed Checks:	Yes
Sort Option:	Vendor Name

Selection Criteria

Batch Year:	22	
Batch Range 1:	001799	001799
Batch Range 2:		
Batch Range 3:		
Payment Request Date:	11/11/2022	
Access Code:	N/A	

Vendor No	Vendor Name	Check No	Date To Pay	Mailing Name	Address	App. Status	Claim No	PO No	Line	Invoice No	Acc Ctl 1099	Description	Batch-Trans-Line	Asset Tag	Amount	Liquidated	
<b>5485</b>	<b>ALL SEASON TIRE CO</b>																
02	C 11/11/22			ALL SEASON TIRE	1102 MENOMONIE ST EAU CLAIRE WI 54703												
				362461								1 NA TIRES	22001799	1 1	528.14	528.14	
												Cash: 22-701-00-11110-000-000-000-000-000			528.14	528.14	
												TREASURER'S CASH/ HIGHWAY					
															<b>Invoice Total:</b>	<b>528.14</b>	<b>528.14</b>
															<b>Check Total:</b>	<b>528.14</b>	<b>528.14</b>
															<b>Vendor Total:</b>	<b>528.14</b>	<b>528.14</b>
<b>131873</b>	<b>ALTEC INDUSTRIES INC</b>																
02	C 11/11/22			ALTEC INDUSTRIES	PO BOX 11407 BIRMINGHAM AL 352460414												
				7423218								1 NA TRAINING/MATERIALS	22001799	2 1	11,382.76	11,382.76	
												Cash: 22-701-00-11110-000-000-000-000-000			11,382.76	11,382.76	
												TREASURER'S CASH/ HIGHWAY					
															<b>Invoice Total:</b>	<b>11,382.76</b>	<b>11,382.76</b>
															<b>Check Total:</b>	<b>11,382.76</b>	<b>11,382.76</b>
															<b>Vendor Total:</b>	<b>11,382.76</b>	<b>11,382.76</b>
<b>5254</b>	<b>APPLIED INDUSTRIAL TECHNOLOGIES INC</b>																
02	C 11/11/22			APPLIED INDUSTRIAL TECHNOLOGIES	22510 NETWORK PL CHICAGO IL 606731225												
				7025520711								1 NA PARTS	22001799	3 1	240.83	240.83	
												Cash: 22-701-00-11110-000-000-000-000-000			240.83	240.83	
												TREASURER'S CASH/ HIGHWAY					
															<b>Invoice Total:</b>	<b>240.83</b>	<b>240.83</b>
															<b>Check Total:</b>	<b>240.83</b>	<b>240.83</b>
															<b>Vendor Total:</b>	<b>240.83</b>	<b>240.83</b>
<b>56</b>	<b>ARING EQUIPMENT EXCHANGE</b>																
02	C 11/11/22			ARING EQUIPMENT EXCHANGE	PO BOX 88256 MILWAUKEE WI 532880256												
				854252								1 NA FORK TINE	22001799	4 1	1,518.75	1,518.75	
												Cash: 22-701-00-11110-000-000-000-000-000			1,518.75	1,518.75	
												TREASURER'S CASH/ HIGHWAY					
															<b>Invoice Total:</b>	<b>1,518.75</b>	<b>1,518.75</b>
															<b>Check Total:</b>	<b>1,518.75</b>	<b>1,518.75</b>
															<b>Vendor Total:</b>	<b>1,518.75</b>	<b>1,518.75</b>
<b>125717</b>	<b>BIG RIG TOWING &amp; TRANSPORT LLC</b>																
02	C 11/11/22			BIG RIG TOWING & TRANSPORT LLC	6106 CHUCK LN EAU CLAIRE WI 54703												
				34448								1 NA DUMP TRUCK TOWING	22001799	5 1	568.75	568.75	
												Cash: 22-701-00-11110-000-000-000-000-000			568.75	568.75	
												TREASURER'S CASH/ HIGHWAY					

Report Date 11/09/22 08:36 AM  
 For Batches 001799 -001799 , - , -  
 Payment Request Date 11/11/22

County of Eau Claire  
 Payment Request Edit

Page No 2  
 FPEDT01B

Vendor No	Vendor Name	Address	App. Status						
Check No	Date To Pay	Mailing Name							
Claim No	PO No	Line Invoice No	Acc Ctl 1099	Description	Batch-Trans-Line	Asset Tag	Amount	Liquidated	
125717	BIG RIG TOWING & TRANSPORT LLC								
02	C 11/11/22	BIG RIG TOWING & TRANSPORT LLC		6106 CHUCK LN EAU CLAIRE WI 54703					
		34448	1 NA	DUMP TRUCK TOWING	22001799 5 1		568.75	568.75	
							568.75	568.75	
				REPAIR PARTS-EXTERNAL LABOR(CLRNG ACCT)					
		34622	1 NA	DUMP TRUCK TOWING	22001799 6 1		600.00	600.00	
				Cash: 22-701-00-11110-000-000-000-000			600.00	600.00	
				REPAIR PARTS-EXTERNAL LABOR(CLRNG ACCT)					
				TREASURER'S CASH/ HIGHWAY					
							<b>Invoice Total:</b>	<b>568.75</b>	<b>568.75</b>
							<b>Check Total:</b>	<b>1,168.75</b>	<b>1,168.75</b>
							<b>Vendor Total:</b>	<b>1,168.75</b>	<b>1,168.75</b>
39608	CHIPPEWA VALLEY ENERGY								
02	C 11/11/22	CHIPPEWA VALLEY ENERGY		PO BOX 837 EAU CLAIRE WI 547020837					
		I015748	1 NA	DIESEL FUEL	22001799 7 1		33,375.00	33,375.00	
				Cash: 22-701-00-11110-000-000-000-000			33,375.00	33,375.00	
				DIESEL					
				TREASURER'S CASH/ HIGHWAY					
							<b>Invoice Total:</b>	<b>33,375.00</b>	<b>33,375.00</b>
							<b>Check Total:</b>	<b>66,750.00</b>	<b>66,750.00</b>
							<b>Vendor Total:</b>	<b>66,750.00</b>	<b>66,750.00</b>
54208	CINTAS CORPORATION								
02	C 11/11/22	CINTAS LOC#16		PO BOX 650838 DALLAS TX 752650838					
		5130444598	1 NA	WATER COOLER/FIRST AID SERVICE	22001799 9 1		195.87	195.87	
				Cash: 22-701-00-11110-000-000-000-000			195.87	195.87	
				FIELD SMALL TOOLS/ ROADWAY SUPPLIES					
				TREASURER'S CASH/ HIGHWAY					
							<b>Invoice Total:</b>	<b>195.87</b>	<b>195.87</b>
							<b>Check Total:</b>	<b>195.87</b>	<b>195.87</b>
							<b>Vendor Total:</b>	<b>195.87</b>	<b>195.87</b>
4851	COUNTY MATERIALS CORP								
02	C 11/11/22	COUNTY MATERIALS CORP		PO BOX 100 MARATHON WI 54448					
		3839828-00	1 NA	MATERIALS	22001799 61 1		2,675.18	2,675.18	
				Cash: 22-701-00-11110-000-000-000-000			2,675.18	2,675.18	



Report Date 11/09/22 08:36 AM  
 For Batches 001799 -001799 , - , -  
 Payment Request Date 11/11/22

County of Eau Claire  
 Payment Request Edit

Vendor No	Vendor Name	Check No	Date To Pay	Mailing Name	Address	App. Status	Claim No	PO No	Line	Invoice No	Acc Ctl 1099	Description	Batch-Trans-Line	Asset Tag	Amount	Liquidated				
<b>4851</b>	<b>COUNTY MATERIALS CORP</b>																			
02	C 11/11/22			COUNTY MATERIALS CORP	PO BOX 100 MARATHON WI 54448															
				3839828-00					1	NA MATERIALS			22001799	61	1	2,675.18	2,675.18			
																	2,675.18	2,675.18		
				LOCAL DEPT/ROADWAY SUPPLIES	TREASURER'S CASH/ HIGHWAY															
																	<b>Invoice Total:</b>	<b>2,675.18</b>	<b>2,675.18</b>	
																		<b>Check Total:</b>	<b>2,675.18</b>	<b>2,675.18</b>
																		<b>Vendor Total:</b>	<b>2,675.18</b>	<b>2,675.18</b>
<b>860</b>	<b>CULLIGAN STERLING WATER</b>																			
02	C 11/11/22			STERLING WATER INC	PO BOX 7085 INDIANAPOLIS IN 462077085															
				307X08661908					1	NA COOLER RENTAL NOV 2022			22001799	10	1	119.90	119.90			
				22-701-31-53270-220-000-000-000-000	Cash: 22-701-00-11110-000-000-000-000-000															
				BLDING & GRD OPS/ UTILITY SERVICE	TREASURER'S CASH/ HIGHWAY															
																		<b>Invoice Total:</b>	<b>119.90</b>	<b>119.90</b>
																		<b>Check Total:</b>	<b>119.90</b>	<b>119.90</b>
																		<b>Vendor Total:</b>	<b>119.90</b>	<b>119.90</b>
<b>489</b>	<b>FARRELL EQUIPMENT &amp; SUPPLY CO</b>																			
02	C 11/11/22			FARRELL EQUIPMENT AND SUPPLY CO INC	1510 N HASTINGS WAY EAU CLAIRE WI 54703															
				1267385					1	NA STAPLES			22001799	11	1	209.97	209.97			
				22-701-31-53312-370-000-000-000-000	Cash: 22-701-00-11110-000-000-000-000-000															
				CTHS ROAD CONST/Roadway Supplies	TREASURER'S CASH/ HIGHWAY															
																		<b>Invoice Total:</b>	<b>209.97</b>	<b>209.97</b>
																		<b>Check Total:</b>	<b>209.97</b>	<b>209.97</b>
																		<b>Vendor Total:</b>	<b>209.97</b>	<b>209.97</b>
<b>491</b>	<b>FASTENAL COMPANY</b>																			
02	C 11/11/22			FASTENAL COMPANY	PO BOX 1286 WINONA MN 559871286															
				WIEAU316588					1	NA WIPES			22001799	12	1	14.63	14.63			
				22-701-31-53230-350-000-000-000-000	Cash: 22-701-00-11110-000-000-000-000-000															
				SHOP/ REPAIR & MAINT SUPPLIES	TREASURER'S CASH/ HIGHWAY															
																		<b>Invoice Total:</b>	<b>14.63</b>	<b>14.63</b>
																		<b>Check Total:</b>	<b>14.63</b>	<b>14.63</b>
																		<b>Vendor Total:</b>	<b>14.63</b>	<b>14.63</b>
				WIEAU316639					1	NA PARTS			22001799	13	1	139.45	139.45			
				22-701-00-16121-000-000-000-000-000	Cash: 22-701-00-11110-000-000-000-000-000															
				REPAIR PARTS	TREASURER'S CASH/ HIGHWAY															
																		<b>Invoice Total:</b>	<b>139.45</b>	<b>139.45</b>
																		<b>Check Total:</b>	<b>139.45</b>	<b>139.45</b>
																		<b>Vendor Total:</b>	<b>139.45</b>	<b>139.45</b>
				WIEAU316660					1	NA EYEWEAR/GLOVES/VEST			22001799	14	1	74.74	74.74			
				22-701-31-53230-350-000-000-000-000	Cash: 22-701-00-11110-000-000-000-000-000															
																		<b>Invoice Total:</b>	<b>74.74</b>	<b>74.74</b>
																		<b>Check Total:</b>	<b>74.74</b>	<b>74.74</b>
																		<b>Vendor Total:</b>	<b>74.74</b>	<b>74.74</b>

Report Date 11/09/22 08:36 AM  
 For Batches 001799 -001799 , - , -  
 Payment Request Date 11/11/22

County of Eau Claire  
 Payment Request Edit

Page No 4  
 FPEDT01B

Vendor No	Vendor Name	Check No	Date To Pay	Mailing Name	Address	App. Status	Claim No	PO No	Line	Invoice No	Acc	Ctl	1099	Description	Batch-Trans-Line	Asset Tag	Amount	Liquidated	
<b>491</b>	<b>FASTENAL COMPANY</b>																		
02	C 11/11/22	FASTENAL COMPANY			PO BOX 1286 WINONA MN 559871286														
		WIEAU316660					1	NA	EYEWEAR/GLOVES/VEST					22001799	14	1	74.74	74.74	
																	74.74	74.74	
	SHOP/ REPAIR & MAINT SUPPLIES				TREASURER'S CASH/ HIGHWAY														
		WIEAU316660					1	NA	EYEWEAR/GLOVES/VEST					22001799	15	1	137.09	137.09	
																	137.09	137.09	
					Cash: 22-701-00-11110-000-000-000-000												137.09	137.09	
	FIELD SMALL TOOLS/ ROADWAY SUPPLIES				TREASURER'S CASH/ HIGHWAY														
																	<b>Invoice Total:</b>	<b>74.74</b>	<b>74.74</b>
																	<b>Check Total:</b>	<b>137.09</b>	<b>137.09</b>
																	<b>Vendor Total:</b>	<b>365.91</b>	<b>365.91</b>
<b>5049</b>	<b>FORCE AMERICA INC</b>																		
02	C 11/11/22	FORCE AMERICA INC			501 E CLIFF RD STE 100 BURNSVILLE MN 55337														
		001-1677950					1	NA	ASSEMBLY					22001799	16	1	372.26	372.26	
																	372.26	372.26	
					Cash: 22-701-00-11110-000-000-000-000												372.26	372.26	
	REPAIR PARTS-DIRECT CHARGE (CLRNG ACCT)				TREASURER'S CASH/ HIGHWAY														
		001-1677954					1	NA	SEAL KITS					22001799	17	1	124.84	124.84	
																	124.84	124.84	
					Cash: 22-701-00-11110-000-000-000-000												124.84	124.84	
	REPAIR PARTS-DIRECT CHARGE (CLRNG ACCT)				TREASURER'S CASH/ HIGHWAY														
		001-1679533					1	NA	COMPENSATOR					22001799	18	1	74.04	74.04	
																	74.04	74.04	
					Cash: 22-701-00-11110-000-000-000-000												74.04	74.04	
	REPAIR PARTS-DIRECT CHARGE (CLRNG ACCT)				TREASURER'S CASH/ HIGHWAY														
																	<b>Invoice Total:</b>	<b>74.04</b>	<b>74.04</b>
																	<b>Check Total:</b>	<b>571.14</b>	<b>571.14</b>
																	<b>Vendor Total:</b>	<b>571.14</b>	<b>571.14</b>
<b>162683</b>	<b>FROSETH ENTERPRISES LLC</b>																		
02	C 11/11/22	FROSETH ENTERPRISES LLC			E5434 COUNTY RD V ELEVA WI 54738														
		5549					1	NA	HAULING BASE COURSE 10/25-10/26/22001799								3,228.75	3,228.75	
																	3,228.75	3,228.75	
					Cash: 22-701-00-11110-000-000-000-000												3,228.75	3,228.75	
	CTHS ROAD CONST/Roadway Supplies				TREASURER'S CASH/ HIGHWAY														
																	<b>Invoice Total:</b>	<b>3,228.75</b>	<b>3,228.75</b>
																	<b>Check Total:</b>	<b>3,228.75</b>	<b>3,228.75</b>
																	<b>Vendor Total:</b>	<b>3,228.75</b>	<b>3,228.75</b>

Report Date 11/09/22 08:36 AM  
 For Batches 001799 -001799 , - , -  
 Payment Request Date 11/11/22

County of Eau Claire  
 Payment Request Edit

Vendor No	Vendor Name	Check No	Date To Pay	Mailing Name	Address	App. Status	Claim No	PO No	Line	Invoice No	Acc	Ctl	1099	Description	Batch-Trans-Line	Asset Tag	Amount	Liquidated	
<b>5889</b>	<b>GRAINGER INC, WW</b>																		
02	C 11/11/22	WW GRAINGER INC			DEPT 848650669 PALATINE IL 600380001														
		9485279740												1 NA CONTACTOR	22001799 20 1		36.13	36.13	
					Cash: 22-701-00-11110-000-000-000-000-000												36.13	36.13	
					FIELD SMALL TOOLS/ ROADWAY SUPPLIES									TREASURER'S CASH/ HIGHWAY					
																	<b>Invoice Total:</b>	<b>36.13</b>	<b>36.13</b>
																	<b>Check Total:</b>	<b>36.13</b>	<b>36.13</b>
																	<b>Vendor Total:</b>	<b>36.13</b>	<b>36.13</b>
<b>1264</b>	<b>HAAS SONS INC</b>																		
02	C 11/11/22	HAAS SONS INC			203 E BIRCH THORP WI 54771														
		126801												1 NA 3/4 INCH DENSE BASE	22001799 21 1		7,963.68	7,963.68	
					Cash: 22-701-00-11110-000-000-000-000-000												7,963.68	7,963.68	
					CTHS ROAD CONST/Roadway Supplies									TREASURER'S CASH/ HIGHWAY					
																	<b>Invoice Total:</b>	<b>7,963.68</b>	<b>7,963.68</b>
														1 NA 3/4 INCH DENSE BASE	22001799 22 1		7,309.62	7,309.62	
					Cash: 22-701-00-11110-000-000-000-000-000												7,309.62	7,309.62	
					CTHS ROAD CONST/Roadway Supplies									TREASURER'S CASH/ HIGHWAY					
																	<b>Invoice Total:</b>	<b>7,309.62</b>	<b>7,309.62</b>
														1 NA 3/4 INCH PRIVATE RECYCLE	22001799 23 1		368.39	368.39	
					Cash: 22-701-00-11110-000-000-000-000-000												368.39	368.39	
					CTHS ROAD CONST/Roadway Supplies									TREASURER'S CASH/ HIGHWAY					
																	<b>Invoice Total:</b>	<b>368.39</b>	<b>368.39</b>
														1 NA 3/4 INCH DENSE BASE	22001799 24 1		110.61	110.61	
					Cash: 22-701-00-11110-000-000-000-000-000												110.61	110.61	
					CTHS ROAD CONST/Roadway Supplies									TREASURER'S CASH/ HIGHWAY					
																	<b>Invoice Total:</b>	<b>110.61</b>	<b>110.61</b>
														1 NA FOLSOM ST PROJECT PAY REQ 2	22001799 25 1		386,935.34	386,935.34	
					Cash: 22-701-00-11110-000-000-000-000-000												386,935.34	386,935.34	
					CTHS ROAD CONST/Roadway Supplies									TREASURER'S CASH/ HIGHWAY					
																	<b>Invoice Total:</b>	<b>386,935.34</b>	<b>386,935.34</b>
																	<b>Check Total:</b>	<b>402,687.64</b>	<b>402,687.64</b>
																	<b>Vendor Total:</b>	<b>402,687.64</b>	<b>402,687.64</b>
<b>27693</b>	<b>JOHNSON TRAILERS</b>																		
02	C 11/11/22	JOHNSON TRAILER CO			E7290 STATE RD 170 COLFAX WI 54730														
		12088												1 NA TRAILER	22001799 29 1		14,345.00	14,345.00	

Report Date 11/09/22 08:36 AM  
 For Batches 001799 -001799 , - , -  
 Payment Request Date 11/11/22

County of Eau Claire  
 Payment Request Edit

Vendor No	Vendor Name	Check No	Date To Pay	Mailing Name	Address	App. Status	Claim No	PO No	Line	Invoice No	Acc	Ctl	1099	Description	Batch-Trans-Line	Asset Tag	Amount	Liquidated	
<b>27693</b>	<b>JOHNSON TRAILERS</b>																		
02	C 11/11/22			JOHNSON TRAILER CO	E7290 STATE RD 170 COLFAX WI 54730														
				12088										1 NA TRAILER	22001799 29 1		14,345.00	14,345.00	
					Cash: 22-701-00-11110-000-000-000-000-000												14,345.00	14,345.00	
					MACHINERY & EQUIPMENT									TREASURER'S CASH/ HIGHWAY					
																	<b>Invoice Total:</b>	<b>14,345.00</b>	<b>14,345.00</b>
																	<b>Check Total:</b>	<b>14,345.00</b>	<b>14,345.00</b>
																	<b>Vendor Total:</b>	<b>14,345.00</b>	<b>14,345.00</b>
<b>35998</b>	<b>LARSON COMPANIES</b>																		
02	C 11/11/22			LARSON COMPANIES	PO BOX 270710 MINNEAPOLIS MN 55427														
				5304284135										1 NA SPRING AIR	22001799 30 1		214.76	214.76	
					Cash: 22-701-00-11110-000-000-000-000-000												214.76	214.76	
					REPAIR PARTS-DIRECT CHARGE (CLRNG ACCT)									TREASURER'S CASH/ HIGHWAY					
																	<b>Invoice Total:</b>	<b>214.76</b>	<b>214.76</b>
																	<b>Check Total:</b>	<b>214.76</b>	<b>214.76</b>
																	<b>Vendor Total:</b>	<b>214.76</b>	<b>214.76</b>
<b>1008</b>	<b>MILLER-BRADFORD &amp; RISBERG INC</b>																		
02	C 11/11/22			MILLER BRADFORD & RISBERG INC	PO BOX 8409 CAROL STREAM IL 601978409														
				R00452										1 NA EQUIP RENTAL 8/22/22-9/18/22	22001799 31 1		216.66	216.66	
					Cash: 22-701-00-11110-000-000-000-000-000												216.66	216.66	
					CTHS ROAD CONST/Roadway Supplies									TREASURER'S CASH/ HIGHWAY					
																	<b>Invoice Total:</b>	<b>216.66</b>	<b>216.66</b>
																	<b>Check Total:</b>	<b>216.67</b>	<b>216.67</b>
																	<b>Vendor Total:</b>	<b>216.67</b>	<b>216.67</b>
					Cash: 22-701-00-11110-000-000-000-000-000												216.67	216.67	
					CTHS ROAD CONST/Roadway Supplies									TREASURER'S CASH/ HIGHWAY					
																	<b>Invoice Total:</b>	<b>216.67</b>	<b>216.67</b>
																	<b>Check Total:</b>	<b>650.00</b>	<b>650.00</b>
																	<b>Vendor Total:</b>	<b>650.00</b>	<b>650.00</b>
<b>30171</b>	<b>MONARCH PAVING CO</b>																		
02	C 11/11/22			MONARCH PAVING COMPANY	768 US HIGHWAY 8 AMERY WI 54001														
				5500064376										1 NA CTH F PAVING MATERIALS	22001799 34 1		341,393.10	341,393.10	
					Cash: 22-701-00-11110-000-000-000-000-000												341,393.10	341,393.10	

Vendor No	Vendor Name	Check No	Date To Pay	Mailing Name	Address	App. Status	Claim No	PO No	Line	Invoice No	Acc	Ctl	1099	Description	Batch-Trans-Line	Asset Tag	Amount	Liquidated	
<b>30171</b>	<b>MONARCH PAVING CO</b>																		
02	C 11/11/22			MONARCH PAVING COMPANY	768 US HIGHWAY 8 AMERY WI 54001														
				5500064376			1	NA	CTH	F PAVING MATERIALS				22001799	34	1	341,393.10	341,393.10	
																	341,393.10	341,393.10	
				CTHS ROAD CONST/Roadway Supplies	TREASURER'S CASH/ HIGHWAY														
																	<b>Invoice Total:</b>	<b>341,393.10</b>	<b>341,393.10</b>
				5500064411			1	NA	CTH	JJ PAVING MATERIALS				22001799	35	1	564,343.10	564,343.10	
																	564,343.10	564,343.10	
				22-701-31-53312-370-000-000-000-000	Cash: 22-701-00-11110-000-000-000-000-000												564,343.10	564,343.10	
				CTHS ROAD CONST/Roadway Supplies	TREASURER'S CASH/ HIGHWAY														
																	<b>Invoice Total:</b>	<b>564,343.10</b>	<b>564,343.10</b>
				5500064517			1	NA	CTH	G RECONDITIONING				22001799	36	1	417,398.85	417,398.85	
																	417,398.85	417,398.85	
				22-701-31-53312-370-000-000-000-000	Cash: 22-701-00-11110-000-000-000-000-000												417,398.85	417,398.85	
				CTHS ROAD CONST/Roadway Supplies	TREASURER'S CASH/ HIGHWAY														
																	<b>Invoice Total:</b>	<b>417,398.85</b>	<b>417,398.85</b>
																	<b>Check Total:</b>	<b>1,323,135.05</b>	<b>1,323,135.05</b>
																	<b>Vendor Total:</b>	<b>1,323,135.05</b>	<b>1,323,135.05</b>
<b>5973</b>	<b>NAPA AUTO PARTS</b>																		
02	C 11/11/22			KENSON PARTS GROUP INC	DBA NAPA AUTO PARTS3580 MALL DR EAU CLAIRE WI 54701														
				715055			1	NA	RAM	PROMASTER				22001799	37	1	73.14	73.14	
																	73.14	73.14	
				22-701-00-16151-000-000-000-000-000	Cash: 22-701-00-11110-000-000-000-000-000												73.14	73.14	
				REPAIR PARTS-DIRECT CHARGE (CLRNG ACCT)	TREASURER'S CASH/ HIGHWAY														
																	<b>Invoice Total:</b>	<b>73.14</b>	<b>73.14</b>
				715069			1	NA	RAM	PROMASTER				22001799	38	1	73.14	73.14	
																	73.14	73.14	
				22-701-00-16151-000-000-000-000-000	Cash: 22-701-00-11110-000-000-000-000-000												73.14	73.14	
				REPAIR PARTS-DIRECT CHARGE (CLRNG ACCT)	TREASURER'S CASH/ HIGHWAY														
																	<b>Invoice Total:</b>	<b>73.14</b>	<b>73.14</b>
																	<b>Check Total:</b>	<b>146.28</b>	<b>146.28</b>
																	<b>Vendor Total:</b>	<b>146.28</b>	<b>146.28</b>
<b>5987</b>	<b>NELS GUNDERSON CHEVROLET</b>																		
02	C 11/11/22			NELS GUNDERSON CHEVROLET	I94 & US HWY 10PO BOX 37 OSSEO WI 54758														
				75582			1	NA	2022	CHEVY SILVERADO PURCHASE				22001799	39	1	42,788.00	42,788.00	
																	42,788.00	42,788.00	
				22-701-00-18500-000-000-000-000-000	Cash: 22-701-00-11110-000-000-000-000-000												42,788.00	42,788.00	
				MACHINERY & EQUIPMENT	TREASURER'S CASH/ HIGHWAY														
																	<b>Invoice Total:</b>	<b>42,788.00</b>	<b>42,788.00</b>
				75825			1	NA	2022	CHEVY SILVERADO PURCHASE				22001799	40	1	32,188.00	32,188.00	

Report Date 11/09/22 08:36 AM  
 For Batches 001799 -001799 , - , -  
 Payment Request Date 11/11/22

County of Eau Claire  
 Payment Request Edit

Page No 8  
 FPEDT01B

Vendor No	Vendor Name	Address	App. Status	Amount	Liquidated
Check No	Date To Pay	Mailing Name			
Claim No	PO No	Line Invoice No	Acc Ctl 1099 Description	Batch-Trans-Line Asset Tag	
<b>5987</b>	<b>NELS GUNDERSON CHEVROLET</b>				
02	C 11/11/22	NELS GUNDERSON CHEVROLET	I94 & US HWY 10PO BOX 37 OSSEO WI 54758		
		75825	1 NA 2022 CHEVY SILVERADO PURCHASE	22001799 40 1	32,188.00 32,188.00
			Cash: 22-701-00-11110-000-000-000-000-000		32,188.00 32,188.00
			MACHINERY & EQUIPMENT	TREASURER'S CASH/ HIGHWAY	
				<b>Invoice Total:</b>	<b>32,188.00 32,188.00</b>
		75847	1 NA 2022 CHEVY SILVERADO PURCHASE	22001799 41 1	31,488.00 31,488.00
			Cash: 22-701-00-11110-000-000-000-000-000		31,488.00 31,488.00
			MACHINERY & EQUIPMENT	TREASURER'S CASH/ HIGHWAY	
				<b>Invoice Total:</b>	<b>31,488.00 31,488.00</b>
				<b>Check Total:</b>	<b>106,464.00 106,464.00</b>
				<b>Vendor Total:</b>	<b>106,464.00 106,464.00</b>
<b>88145</b>	<b>NUSS TRUCK &amp; EQUIPMENT</b>				
02	C 11/11/22	NUSS TRUCK & EQUIPMENT	PO BOX 6699 ROCHESTER MN 55903		
		5306728P	1 NA CUSHION	22001799 42 1	131.10 131.10
			Cash: 22-701-00-11110-000-000-000-000-000		131.10 131.10
			REPAIR PARTS-DIRECT CHARGE (CLRNG ACCT)	TREASURER'S CASH/ HIGHWAY	
				<b>Invoice Total:</b>	<b>131.10 131.10</b>
				<b>Check Total:</b>	<b>131.10 131.10</b>
				<b>Vendor Total:</b>	<b>131.10 131.10</b>
<b>4036</b>	<b>RIVER STATES TRUCK &amp; TRAILER INC</b>				
02	C 11/11/22	RIVER STATES TRUCK & TRAILER INC	ACCOUNTING DEPT3959 N KINNEY COULEE RD LACROSSE WI 54601		
		2582890	1 NA COOLER	22001799 43 1	355.90 355.90
			Cash: 22-701-00-11110-000-000-000-000-000		355.90 355.90
			REPAIR PARTS-DIRECT CHARGE (CLRNG ACCT)	TREASURER'S CASH/ HIGHWAY	
				<b>Invoice Total:</b>	<b>355.90 355.90</b>
		2582894	1 NA ALTER/TENSION	22001799 44 1	357.90 357.90
			Cash: 22-701-00-11110-000-000-000-000-000		357.90 357.90
			REPAIR PARTS-DIRECT CHARGE (CLRNG ACCT)	TREASURER'S CASH/ HIGHWAY	
				<b>Invoice Total:</b>	<b>357.90 357.90</b>
		2582985	1 NA HEADLIGHT	22001799 45 1	137.81 137.81
			Cash: 22-701-00-11110-000-000-000-000-000		137.81 137.81
			REPAIR PARTS-DIRECT CHARGE (CLRNG ACCT)	TREASURER'S CASH/ HIGHWAY	
				<b>Invoice Total:</b>	<b>137.81 137.81</b>
		CM2582363	1 NA CORE RETURN	22001799 46 1	-260.00 -260.00

Report Date 11/09/22 08:36 AM  
 For Batches 001799 -001799 , - , -  
 Payment Request Date 11/11/22

County of Eau Claire  
 Payment Request Edit

Page No 9  
 FPEDT01B

Vendor No	Vendor Name	Address	App. Status	Amount	Liquidated
Check No	Date To Pay	Mailing Name			
Claim No	PO No	Line Invoice No	Acc Ctl 1099 Description	Batch-Trans-Line Asset Tag	
<b>4036</b>	<b>RIVER STATES TRUCK &amp; TRAILER INC</b>				
02	C 11/11/22	RIVER STATES TRUCK & TRAILER INC	ACCOUNTING DEPT3959 N KINNEY COULEE RD LACROSSE WI 54601		
		CM2582363	1 NA CORE RETURN	22001799 46 1	-260.00 -260.00
22-701-00-16151-000-000-000-000-000			Cash: 22-701-00-11110-000-000-000-000-000		-260.00 -260.00
REPAIR PARTS-DIRECT CHARGE (CLRNG ACCT)			TREASURER'S CASH/ HIGHWAY		
				<b>Invoice Total:</b>	<b>-260.00 -260.00</b>
				<b>Check Total:</b>	<b>591.61 591.61</b>
				<b>Vendor Total:</b>	<b>591.61 591.61</b>
<b>27049</b>	<b>ROLAND MACHINERY CO</b>				
02	C 11/11/22	ROLAND MACHINERY EXCHANGE	NW 7899PO BOX 1450 MINNEAPOLIS MN 554857899		
		44073443	1 NA CHAIN/SEAL/SCREW	22001799 47 1	508.34 508.34
22-701-00-16151-000-000-000-000-000			Cash: 22-701-00-11110-000-000-000-000-000		508.34 508.34
REPAIR PARTS-DIRECT CHARGE (CLRNG ACCT)			TREASURER'S CASH/ HIGHWAY		
				<b>Invoice Total:</b>	<b>508.34 508.34</b>
				<b>Check Total:</b>	<b>508.34 508.34</b>
				<b>Vendor Total:</b>	<b>508.34 508.34</b>
<b>3042</b>	<b>RONCO ENGINEERING SALES CO INC</b>				
02	C 11/11/22	RONCO ENGINEERING SALES INC	PO BOX 8891755 RONCO AVE WINONA MN 559870889		
		3302470	1 NA PARTS	22001799 48 1	87.08 87.08
22-701-00-16121-000-000-000-000-000			Cash: 22-701-00-11110-000-000-000-000-000		87.08 87.08
REPAIR PARTS			TREASURER'S CASH/ HIGHWAY		
				<b>Invoice Total:</b>	<b>87.08 87.08</b>
				<b>Check Total:</b>	<b>508.34 508.34</b>
				<b>Vendor Total:</b>	<b>508.34 508.34</b>
		3302473	1 NA NIPPLE/COUPLER	22001799 49 1	416.91 416.91
22-701-00-16121-000-000-000-000-000			Cash: 22-701-00-11110-000-000-000-000-000		416.91 416.91
REPAIR PARTS			TREASURER'S CASH/ HIGHWAY		
				<b>Invoice Total:</b>	<b>416.91 416.91</b>
				<b>Check Total:</b>	<b>416.91 416.91</b>
				<b>Vendor Total:</b>	<b>416.91 416.91</b>
		3302479	1 NA COUPLER	22001799 50 1	57.26 57.26
22-701-00-16121-000-000-000-000-000			Cash: 22-701-00-11110-000-000-000-000-000		57.26 57.26
REPAIR PARTS			TREASURER'S CASH/ HIGHWAY		
				<b>Invoice Total:</b>	<b>57.26 57.26</b>
				<b>Check Total:</b>	<b>57.26 57.26</b>
				<b>Vendor Total:</b>	<b>57.26 57.26</b>
		3302598	1 NA PARTS	22001799 51 1	741.75 741.75
22-701-00-16151-000-000-000-000-000			Cash: 22-701-00-11110-000-000-000-000-000		741.75 741.75
REPAIR PARTS-DIRECT CHARGE (CLRNG ACCT)			TREASURER'S CASH/ HIGHWAY		
				<b>Invoice Total:</b>	<b>741.75 741.75</b>
				<b>Check Total:</b>	<b>741.75 741.75</b>
				<b>Vendor Total:</b>	<b>741.75 741.75</b>
		3302642	1 NA NIPPLE/COUPLER	22001799 52 1	446.71 446.71

Vendor No	Vendor Name	Address	App. Status	Amount	Liquidated
Check No	Date To Pay	Mailing Name			
Claim No	PO No	Line Invoice No	Acc Ctl 1099 Description	Batch-Trans-Line Asset Tag	
<b>3042</b>	<b>RONCO ENGINEERING SALES CO INC</b>				
02	C 11/11/22	RONCO ENGINEERING SALES INC		PO BOX 8891755 RONCO AVE WINONA MN 559870889	
		3302642	1 NA NIPPLE/COUPLER	22001799 52 1	446.71 446.71
22-701-00-16121-000-000-000-000			Cash: 22-701-00-11110-000-000-000-000-000		446.71 446.71
REPAIR PARTS			TREASURER'S CASH/ HIGHWAY		
				<b>Invoice Total:</b>	<b>446.71 446.71</b>
		3303122	1 NA RETURN INVOICE 3302598	22001799 53 1	-67.95 -67.95
22-701-00-16151-000-000-000-000-000			Cash: 22-701-00-11110-000-000-000-000-000		-67.95 -67.95
REPAIR PARTS-DIRECT CHARGE (CLRNG ACCT)			TREASURER'S CASH/ HIGHWAY		
				<b>Invoice Total:</b>	<b>-67.95 -67.95</b>
				<b>Check Total:</b>	<b>1,681.76 1,681.76</b>
				<b>Vendor Total:</b>	<b>1,681.76 1,681.76</b>
<b>1358</b>	<b>SENN BLACKTOP INC</b>				
02	C 11/11/22	SENN BLACKTOP INC		12154 40TH AVE CHIPPEWA FALLS WI 54729	
		SI-17860	1 NA HOT MIX/TACK	22001799 54 1	41,609.28 41,609.28
22-701-31-53312-370-000-000-000-000			Cash: 22-701-00-11110-000-000-000-000-000		41,609.28 41,609.28
CTHS ROAD CONST/Roadway Supplies			TREASURER'S CASH/ HIGHWAY		
				<b>Invoice Total:</b>	<b>41,609.28 41,609.28</b>
				<b>Check Total:</b>	<b>41,609.28 41,609.28</b>
				<b>Vendor Total:</b>	<b>41,609.28 41,609.28</b>
<b>1209</b>	<b>TRUCKALINE SUSPENSION CENTER</b>				
02	C 11/11/22	TRUCKALINE SUSPENSION CENTER		1420 HILLCREST PKWY ALTOONA WI 54720	
		72156	1 NA SERVICE KIT ARM REPAIR	22001799 55 1	803.26 803.26
22-701-00-16151-000-000-000-000-000			Cash: 22-701-00-11110-000-000-000-000-000		803.26 803.26
REPAIR PARTS-DIRECT CHARGE (CLRNG ACCT)			TREASURER'S CASH/ HIGHWAY		
				<b>Invoice Total:</b>	<b>803.26 803.26</b>
				<b>Check Total:</b>	<b>803.26 803.26</b>
				<b>Vendor Total:</b>	<b>803.26 803.26</b>
<b>7495</b>	<b>UNIVERSAL TRUCK EQUIPMENT</b>				
02	C 11/11/22	UNIVERSAL TRUCK EQUIPMENT		N 15921 SCHUBERT ROAD GALESVILLE WI 54630	
		58625	1 NA PRE-WET PUMP	22001799 56 1	1,370.00 1,370.00
22-701-00-16121-000-000-000-000-000			Cash: 22-701-00-11110-000-000-000-000-000		1,370.00 1,370.00
REPAIR PARTS			TREASURER'S CASH/ HIGHWAY		
				<b>Invoice Total:</b>	<b>1,370.00 1,370.00</b>
		58626	1 NA HITCH/LIFT CYLINDER	22001799 57 1	1,530.80 1,530.80
22-701-00-16121-000-000-000-000-000			Cash: 22-701-00-11110-000-000-000-000-000		1,530.80 1,530.80



Report Date 11/09/22 08:36 AM  
 For Batches 001799 -001799 , - , -  
 Payment Request Date 11/11/22

County of Eau Claire  
 Payment Request Edit

Vendor No	Vendor Name	Address	App. Status	Amount	Liquidated
7495	UNIVERSAL TRUCK EQUIPMENT	N 15921 SCHUBERT ROAD GALESVILLE WI 54630			
02	C 11/11/22 UNIVERSAL TRUCK EQUIPMENT				
	58626	1 NA HITCH/LIFT CYLINDER	22001799 57 1	1,530.80	1,530.80
				1,530.80	1,530.80
	REPAIR PARTS	TREASURER'S CASH/ HIGHWAY			
			<b>Invoice Total:</b>	<b>1,530.80</b>	<b>1,530.80</b>
	58626	1 NA HITCH/LIFT CYLINDER	22001799 58 1	2,370.00	2,370.00
				2,370.00	2,370.00
	22-701-00-16151-000-000-000-000	Cash: 22-701-00-11110-000-000-000-000-000		2,370.00	2,370.00
	REPAIR PARTS-DIRECT CHARGE (CLRNG ACCT)	TREASURER'S CASH/ HIGHWAY			
			<b>Invoice Total:</b>	<b>2,370.00</b>	<b>2,370.00</b>
	58645	1 NA PIN AND LOOP HITCH	22001799 59 1	361.39	361.39
				361.39	361.39
	22-701-00-16151-000-000-000-000	Cash: 22-701-00-11110-000-000-000-000-000		361.39	361.39
	REPAIR PARTS-DIRECT CHARGE (CLRNG ACCT)	TREASURER'S CASH/ HIGHWAY			
			<b>Invoice Total:</b>	<b>361.39</b>	<b>361.39</b>
			<b>Check Total:</b>	<b>5,632.19</b>	<b>5,632.19</b>
			<b>Vendor Total:</b>	<b>5,632.19</b>	<b>5,632.19</b>
484	WASTE MANAGEMENT OF WISCONSIN INC	PO BOX 4648 CAROL STREAM IL 601974648			
02	C 11/11/22 WASTE MANAGEMENT CORP SERVICES INC				
	5952544-2243-8	1 NA TRASH SERVICE 11/01-11/30/22	22001799 60 1	1,103.05	1,103.05
				1,103.05	1,103.05
	22-701-31-53270-370-000-000-000-000	Cash: 22-701-00-11110-000-000-000-000-000		1,103.05	1,103.05
	BLDING & GRD OPS/RDWAY SUPP	TREASURER'S CASH/ HIGHWAY			
			<b>Invoice Total:</b>	<b>1,103.05</b>	<b>1,103.05</b>
			<b>Check Total:</b>	<b>1,103.05</b>	<b>1,103.05</b>
			<b>Vendor Total:</b>	<b>1,103.05</b>	<b>1,103.05</b>
			<b>Total Liquidated:</b>	<b>1,988,695.40</b>	<b>1,988,695.40</b>
		Total Manual Checks:	.00		
		Total Computer Checks:	1,988,695.40		
		Total ACH Checks:	.00		
		Total Electronic Checks:	.00		
		Total Other Checks:	.00		
		Total Unposted Payment Requests:	1,988,695.40		
		Total Posted Payment Requests:	.00		
		Grand Total:	1,988,695.40		
		Estimated No. of Checks:	29		
<b>Fund:</b>		Amount	Liquidated		
701		1,988,695.40	1,988,695.40		

Report Date 11/09/22 08:36 AM  
For Batches 001799 -001799 , - , -  
Payment Request Date 11/11/22

**County of Eau Claire**  
Payment Request Edit

Page No 12  
FPEDT01B

---

Vendor No	Vendor Name									
Check No	Date To Pay	Mailing Name		Address				App. Status		
Claim No	PO No	Line	Invoice No	Acc Ctl 1099	Description	Batch-Trans-Line	Asset Tag	Amount	Liquidated	
<b>Total of all Funds:</b>				1,988,695.40				1,988,695.40		
<u>Bank No</u>		<u>Bank Total</u>								
02		1,988,695.40								

Report Date 11/09/22 08:36 AM  
For Batches 001799 -001799 , - , -  
Payment Request Date 11/11/22

**County of Eau Claire**  
Payment Request Edit

Page No 13  
FPEDT01B

---

Vendor No	Vendor Name								
Check No	Date To Pay	Mailing Name		Address			App. Status		
Claim No	PO No	Line	Invoice No	Acc Ctl 1099	Description	Batch-Trans-Line	Asset Tag	Amount	Liquidated

**Note: The following Payment Vendors are not the same as the PO Vendors.**

Check Key	PO No	Payment Vendor	PO Vendor	Batch\Y\N	Trans Line
-----------	-------	----------------	-----------	-----------	------------

**Note: The following errors have been recorded.**

Report Date 11/09/22 08:36 AM  
For Batches ALL -  
Payment Request Date 11/11/22

County of Eau Claire  
Payment Request Edit

Page No 14  
FPEDT01B

---

The following are checks with negative amounts:

<u>Check Key</u>	<u>Payment Date</u>	<u>Payment Amount</u>	<u>Vendor</u>
------------------	---------------------	-----------------------	---------------

PAYMENT AUTHORIZATION SIGNATURE PAGE

Batch No: 22-001853

Payment Total: \$ 3,296,064.49 ✓

Check Issuance Date: 11/18/2022

Entered \_\_\_\_\_

Reconciled \_\_\_\_\_

Posted \_\_\_\_\_

Highway Commissioner

Jon Johnson

\_\_\_\_\_

Assistant Commissioner

Brian Spilde

\_\_\_\_\_

Fiscal Supervisor

Kyle Welbes

\_\_\_\_\_

Accountant

Kelsey Weigel

*Kelsey Weigel*  
\_\_\_\_\_

HIGHWAY COMMITTEE

Steve Chilson, Chair

\_\_\_\_\_

Nathan Otto, Vice-Chair

\_\_\_\_\_

Judy Gatlin

\_\_\_\_\_

Mark Beckfield

\_\_\_\_\_

Larry Hoekstra

\_\_\_\_\_

County of Eau Claire

Report Date 11/15/22 01:47 PM

Payment Request Edit

FPEDT01B

Report Parameters

Print Options

Print Option:	Posted & Unposted
Print Accounting:	Yes
Print \$0 Net Checks:	Yes
Print Approval Information:	No
Include Payments With Printed Checks:	Yes
Sort Option:	Vendor Name

Selection Criteria

Batch Year:	22	
Batch Range 1:	001853	001853
Batch Range 2:		
Batch Range 3:		
Payment Request Date:	11/18/2022	
Access Code:	N/A	

Vendor No	Vendor Name	Address	App. Status			Amount	Liquidated			
Check No	Date To Pay	Mailing Name	Acc	Ctl	1099	Description	Batch-Trans-Line	Asset Tag	Amount	Liquidated
Claim No	PO No	Line Invoice No								
<b>5485</b>	<b>ALL SEASON TIRE CO</b>									
02	C 11/18/22	ALL SEASON TIRE				1102 MENOMONIE ST EAU CLAIRE WI 54703				
		362513	1	NA		RETREAD	22001853	1 1	1,770.00	1,770.00
						Cash: 22-701-00-11110-000-000-000-000-000			1,770.00	1,770.00
						TREASURER'S CASH/ HIGHWAY				
									<b>Invoice Total:</b>	<b>1,770.00</b>
		362563	1	NA		TIRES	22001853	2 1	1,869.48	1,869.48
						Cash: 22-701-00-11110-000-000-000-000-000			1,869.48	1,869.48
						TREASURER'S CASH/ HIGHWAY				
									<b>Invoice Total:</b>	<b>1,869.48</b>
									<b>Check Total:</b>	<b>3,639.48</b>
									<b>Vendor Total:</b>	<b>3,639.48</b>
<b>5621</b>	<b>ALTOONA WATER &amp; SEWER UTILITY</b>									
02	C 11/18/22	ALTOONA WATER & SEWER UTILITY				1303 LYNN AVE ALTOONA WI 54720				
		999-0059-00-111122	1	NA		BULK WATER	22001853	3 1	1,004.80	1,004.80
						Cash: 22-701-00-11110-000-000-000-000-000			1,004.80	1,004.80
						TREASURER'S CASH/ HIGHWAY				
									<b>Invoice Total:</b>	<b>1,004.80</b>
									<b>Check Total:</b>	<b>1,004.80</b>
									<b>Vendor Total:</b>	<b>1,004.80</b>
<b>1145</b>	<b>AYRES ASSOCIATES</b>									
02	C 11/18/22	AYRES ASSOCIATES				3433 OAKWOOD HILLS PKWY EAU CLAIRE WI 54701				
		203322	1	NA		2022 PROJECTS THRU 10/22/22	22001853	4 1	4,614.70	4,614.70
						Cash: 22-701-00-11110-000-000-000-000-000			4,614.70	4,614.70
						TREASURER'S CASH/ HIGHWAY				
									<b>Invoice Total:</b>	<b>4,614.70</b>
		203322	1	NA		2022 PROJECTS THRU 10/22/22	22001853	5 1	4,614.70	4,614.70
						Cash: 22-701-00-11110-000-000-000-000-000			4,614.70	4,614.70
						TREASURER'S CASH/ HIGHWAY				
									<b>Invoice Total:</b>	<b>4,614.70</b>
		203322	1	NA		2022 PROJECTS THRU 10/22/22	22001853	6 1	4,614.71	4,614.71
						Cash: 22-701-00-11110-000-000-000-000-000			4,614.71	4,614.71
						TREASURER'S CASH/ HIGHWAY				
									<b>Invoice Total:</b>	<b>4,614.71</b>
									<b>Check Total:</b>	<b>13,844.11</b>
									<b>Vendor Total:</b>	<b>13,844.11</b>

Report Date 11/15/22 01:47 PM  
 For Batches 001853 -001853 , - , -  
 Payment Request Date 11/18/22

County of Eau Claire  
 Payment Request Edit

Vendor No	Vendor Name	Address	App. Status	Amount	Liquidated		
Check No	Date To Pay	Mailing Name					
Claim No	PO No	Line Invoice No	Acc Ctl 1099 Description	Batch-Trans-Line	Asset Tag	Amount	Liquidated
<b>162519</b>	<b>BEAUDRY OIL &amp; PROPANE</b>						
02	C 11/18/22	BEAUDRY OIL & PROPANE	630 PROCTOR AVE NW ELK RIVER MN 55330				
		2171102	1 NA ULTRAPURE DEF	22001853	7 1	590.85	590.85
22-701-00-16133-000-000-000-000			Cash: 22-701-00-11110-000-000-000-000			590.85	590.85
DIESEL ENGINE FLUID			TREASURER'S CASH/ HIGHWAY				
			<b>Invoice Total:</b>			<b>590.85</b>	<b>590.85</b>
			<b>Check Total:</b>			<b>590.85</b>	<b>590.85</b>
			<b>Vendor Total:</b>			<b>590.85</b>	<b>590.85</b>
<b>118940</b>	<b>CBS SQUARED INC</b>						
02	C 11/18/22	CBS SQUARED INC	770 TECHNOLOGY WAY CHIPPEWA FALLS WI 54729				
		10819	1 NA HWY FACILITY DESIGN 10/02-10/29/22001853	8	1	4,370.50	4,370.50
22-701-31-59999-370-000-000-000-000			Cash: 22-701-00-11110-000-000-000-000			4,370.50	4,370.50
NEW HWY FACILITY/ROADWAY SUPPLIES			TREASURER'S CASH/ HIGHWAY				
			<b>Invoice Total:</b>			<b>4,370.50</b>	<b>4,370.50</b>
			<b>Check Total:</b>			<b>4,370.50</b>	<b>4,370.50</b>
			<b>Vendor Total:</b>			<b>4,370.50</b>	<b>4,370.50</b>
<b>54208</b>	<b>CINTAS CORPORATION</b>						
02	C 11/18/22	CINTAS LOC#16	PO BOX 650838 DALLAS TX 752650838				
		9198460509	1 NA WATERBREAK COOLER RENTAL	22001853	9 1	45.00	45.00
22-701-31-53270-220-000-000-000-000			Cash: 22-701-00-11110-000-000-000-000			45.00	45.00
BLDING & GRD OPS/ UTILITY SERVICE			TREASURER'S CASH/ HIGHWAY				
			<b>Invoice Total:</b>			<b>45.00</b>	<b>45.00</b>
			<b>Check Total:</b>			<b>45.00</b>	<b>45.00</b>
			<b>Vendor Total:</b>			<b>45.00</b>	<b>45.00</b>
<b>82163</b>	<b>DIAMOND MOWERS INC</b>						
02	C 11/18/22	DIAMOND MOWERS INC	PO BOX 85030 SIOUX FALLS SD 57118				
		0230793-IN	1 NA HEX BASE BLADE BOLT	22001853	10 1	445.10	445.10
22-701-00-16151-000-000-000-000-000			Cash: 22-701-00-11110-000-000-000-000			445.10	445.10
REPAIR PARTS-DIRECT CHARGE (CLRNG ACCT)			TREASURER'S CASH/ HIGHWAY				
			<b>Invoice Total:</b>			<b>445.10</b>	<b>445.10</b>
			<b>Check Total:</b>			<b>445.10</b>	<b>445.10</b>
			<b>Vendor Total:</b>			<b>445.10</b>	<b>445.10</b>
<b>489</b>	<b>FARRELL EQUIPMENT &amp; SUPPLY CO</b>						
02	C 11/18/22	FARRELL EQUIPMENT AND SUPPLY CO INC	1510 N HASTINGS WAY EAU CLAIRE WI 54703				
		1299185	1 NA GUIDE WHEEL	22001853	11 1	154.99	154.99
22-701-00-16152-000-000-000-000-000			Cash: 22-701-00-11110-000-000-000-000			154.99	154.99
			TREASURER'S CASH/ HIGHWAY				



Report Date 11/15/22 01:47 PM  
 For Batches 001853 -001853 , - , -  
 Payment Request Date 11/18/22

County of Eau Claire  
 Payment Request Edit

Vendor No	Vendor Name					Address				App. Status		
Check No	Date To Pay	Mailing Name				Batch-Trans-Line	Asset Tag	Amount	Liquidated			
Claim No	PO No	Line	Invoice No	Acc	Ctl 1099 Description							
489	<b>FARRELL EQUIPMENT &amp; SUPPLY CO</b>											
02	C 11/18/22	FARRELL EQUIPMENT AND SUPPLY CO INC			1510 N HASTINGS WAY EAU CLAIRE WI 54703							
		1299185		1	NA GUIDE WHEEL	22001853	11	1	154.99	154.99		
									154.99	154.99		
					TIRES-DIRECT CHARGE (CLRNG ACCT)							
										<b>Invoice Total:</b>	<b>154.99</b>	
		1299453		1	NA ACID SPRAYER	22001853	12	1	110.97	110.97		
									110.97	110.97		
					Cash: 22-701-00-11110-000-000-000-000-000 FIELD SMALL TOOLS/ ROADWAY SUPPLIES							
										<b>Invoice Total:</b>	<b>110.97</b>	
		1299682		1	NA DOUBLE NET STRAW/STAPLES	22001853	13	1	1,108.73	1,108.73		
									1,108.73	1,108.73		
					Cash: 22-701-00-11110-000-000-000-000-000 CTHS ROAD CONST/Roadway Supplies							
										<b>Invoice Total:</b>	<b>1,108.73</b>	
		1300108		1	NA DOUBLE NET STRAW/STAPLES	22001853	14	1	425.99	425.99		
									425.99	425.99		
					Cash: 22-701-00-11110-000-000-000-000-000 CTHS ROAD CONST/Roadway Supplies							
										<b>Invoice Total:</b>	<b>425.99</b>	
										<b>Check Total:</b>	<b>1,800.68</b>	
										<b>Vendor Total:</b>	<b>1,800.68</b>	
491	<b>FASTENAL COMPANY</b>											
02	C 11/18/22	FASTENAL COMPANY			PO BOX 1286 WINONA MN 559871286							
		WIEAU316856		1	NA EARPLUGS	22001853	15	1	102.52	102.52		
									102.52	102.52		
					Cash: 22-701-00-11110-000-000-000-000-000 FIELD SMALL TOOLS/ ROADWAY SUPPLIES							
										<b>Invoice Total:</b>	<b>102.52</b>	
		WIEAU316899		1	NA PARTS	22001853	16	1	33.63	33.63		
									33.63	33.63		
					Cash: 22-701-00-11110-000-000-000-000-000 SHOP/ REPAIR & MAINT SUPPLIES							
										<b>Invoice Total:</b>	<b>33.63</b>	
										<b>Check Total:</b>	<b>136.15</b>	
										<b>Vendor Total:</b>	<b>136.15</b>	
5049	<b>FORCE AMERICA INC</b>											
02	C 11/18/22	FORCE AMERICA INC			501 E CLIFF RD STE 100 BURNSVILLE MN 55337							
		001-1679908		1	NA CABLE/HARNESS	22001853	17	1	218.89	218.89		

Report Date 11/15/22 01:47 PM  
 For Batches 001853 -001853 , - , -  
 Payment Request Date 11/18/22

**County of Eau Claire**  
 Payment Request Edit

Page No 4  
 FPEDT01B

Vendor No	Vendor Name			Address		App. Status				
Check No	Date To Pay	Mailing Name								
Claim No	PO No	Line	Invoice No	Acc	Ctl 1099	Description	Batch-Trans-Line	Asset Tag	Amount	Liquidated
<b>5049</b>	<b>FORCE AMERICA INC</b>									
02	C 11/18/22	FORCE AMERICA INC			501 E CLIFF RD STE 100 BURNSVILLE MN 55337					
		001-1679908	1	NA		CABLE/HARNASS	22001853 17 1		218.89	218.89
						Cash: 22-701-00-11110-000-000-000-000-000			218.89	218.89
						REPAIR PARTS-DIRECT CHARGE (CLRNG ACCT) TREASURER'S CASH/ HIGHWAY				
								<b>Invoice Total:</b>	<b>218.89</b>	<b>218.89</b>
								<b>Check Total:</b>	<b>218.89</b>	<b>218.89</b>
								<b>Vendor Total:</b>	<b>218.89</b>	<b>218.89</b>
<b>5889</b>	<b>GRAINGER INC, WW</b>									
02	C 11/18/22	WW GRAINGER INC			DEPT 848650669 PALATINE IL 600380001					
		9496037236	1	NA		DIAPHRAGM PUMP	22001853 18 1		260.81	260.81
						Cash: 22-701-00-11110-000-000-000-000-000			260.81	260.81
						SHOP/ REPAIR & MAINT SUPPLIES TREASURER'S CASH/ HIGHWAY				
								<b>Invoice Total:</b>	<b>260.81</b>	<b>260.81</b>
		9496880536	1	NA		LABEL TAPE CARTRIDGE	22001853 19 1		24.34	24.34
						Cash: 22-701-00-11110-000-000-000-000-000			24.34	24.34
						SHOP/ REPAIR & MAINT SUPPLIES TREASURER'S CASH/ HIGHWAY				
								<b>Invoice Total:</b>	<b>24.34</b>	<b>24.34</b>
		9496907545	1	NA		RV/MARINE ANTIFREEZE	22001853 20 1		105.60	105.60
						Cash: 22-701-00-11110-000-000-000-000-000			105.60	105.60
						SHOP/ REPAIR & MAINT SUPPLIES TREASURER'S CASH/ HIGHWAY				
								<b>Invoice Total:</b>	<b>105.60</b>	<b>105.60</b>
		9497822032	1	NA		HOSE ADAPTER	22001853 21 1		97.32	97.32
						Cash: 22-701-00-11110-000-000-000-000-000			97.32	97.32
						REPAIR PARTS-DIRECT CHARGE (CLRNG ACCT) TREASURER'S CASH/ HIGHWAY				
								<b>Invoice Total:</b>	<b>97.32</b>	<b>97.32</b>
		9499109073	1	NA		FLANGE BEARING	22001853 22 1		98.07	98.07
						Cash: 22-701-00-11110-000-000-000-000-000			98.07	98.07
						REPAIR PARTS-DIRECT CHARGE (CLRNG ACCT) TREASURER'S CASH/ HIGHWAY				
								<b>Invoice Total:</b>	<b>98.07</b>	<b>98.07</b>
		9499109081	1	NA		DIAPHRAGM PUMP	22001853 23 1		113.44	113.44
						Cash: 22-701-00-11110-000-000-000-000-000			113.44	113.44
						BLDING & GRD OPS/RDWAY SUPP TREASURER'S CASH/ HIGHWAY				
								<b>Invoice Total:</b>	<b>113.44</b>	<b>113.44</b>
								<b>Check Total:</b>	<b>699.58</b>	<b>699.58</b>

Report Date 11/15/22 01:47 PM  
 For Batches 001853 -001853 , - , -  
 Payment Request Date 11/18/22

County of Eau Claire  
 Payment Request Edit

Vendor No	Vendor Name	Check No	Date To Pay	Mailing Name	Address	App. Status	Claim No	PO No	Line	Invoice No	Acc	Ctl	1099	Description	Batch-Trans-Line	Asset Tag	Amount	Liquidated	
<b>5889</b>	<b>GRAINGER INC, WW</b>																		
<b>Vendor Total:</b>																	<b>699.58</b>	<b>699.58</b>	
<b>1264</b>	<b>HAAS SONS INC</b>																		
02	C 11/18/22			HAAS SONS INC	203 E BIRCH THORP WI 54771														
				127953										1 NA 3/4 INCH PRIVATE RECYCLE	22001853	24	1	105.06	105.06
														Cash: 22-701-00-11110-000-000-000-000-000				105.06	105.06
														TREASURER'S CASH/ HIGHWAY					
<b>Invoice Total:</b>																	<b>105.06</b>	<b>105.06</b>	
<b>Check Total:</b>																	<b>105.06</b>	<b>105.06</b>	
<b>Vendor Total:</b>																	<b>105.06</b>	<b>105.06</b>	
<b>110868</b>	<b>JEWELL ASSOCIATES ENGINEERS INC</b>																		
02	C 11/18/22			JEWELL ASSOCIATES ENGINEERS INC	560 SUNRISE DR SPRING GREEN WI 53588														
				13763										1 NA CTH CC PROJ 8/27/22-9/30/22	22001853	25	1	3,750.00	3,750.00
														Cash: 22-701-00-11110-000-000-000-000-000				3,750.00	3,750.00
														TREASURER'S CASH/ HIGHWAY					
<b>Invoice Total:</b>																	<b>3,750.00</b>	<b>3,750.00</b>	
				13825										1 NA CTH T PROJECT 8/27/22-9/30/22	22001853	26	1	20,099.89	20,099.89
														Cash: 22-701-00-11110-000-000-000-000-000				20,099.89	20,099.89
														TREASURER'S CASH/ HIGHWAY					
<b>Invoice Total:</b>																	<b>20,099.89</b>	<b>20,099.89</b>	
				13826										1 NA CTH T FRA PROJ 8/27/22-9/30/22	22001853	27	1	8,047.25	8,047.25
														Cash: 22-701-00-11110-000-000-000-000-000				8,047.25	8,047.25
														TREASURER'S CASH/ HIGHWAY					
<b>Invoice Total:</b>																	<b>8,047.25</b>	<b>8,047.25</b>	
				13868										1 NA CTH CC PROJ 10/01-10/25/22	22001853	28	1	926.25	926.25
														Cash: 22-701-00-11110-000-000-000-000-000				926.25	926.25
														TREASURER'S CASH/ HIGHWAY					
<b>Invoice Total:</b>																	<b>926.25</b>	<b>926.25</b>	
				13876										1 NA CTH T LAYOUT 10/01-10/28/22	22001853	29	1	60.00	60.00
														Cash: 22-701-00-11110-000-000-000-000-000				60.00	60.00
														TREASURER'S CASH/ HIGHWAY					
<b>Invoice Total:</b>																	<b>60.00</b>	<b>60.00</b>	
				13877										1 NA CTH T FRA PROJ 10/01-10/28/22	22001853	30	1	5,730.00	5,730.00
														Cash: 22-701-00-11110-000-000-000-000-000				5,730.00	5,730.00
														TREASURER'S CASH/ HIGHWAY					
<b>Invoice Total:</b>																	<b>5,730.00</b>	<b>5,730.00</b>	

Report Date 11/15/22 01:47 PM  
 For Batches 001853 -001853 , - , -  
 Payment Request Date 11/18/22

County of Eau Claire  
 Payment Request Edit

Page No 6  
 FPEDT01B

Vendor No	Vendor Name	Check No	Date To Pay	Mailing Name	Address	App. Status	Claim No	PO No	Line	Invoice No	Acc	Ctl	1099	Description	Batch-Trans-Line	Asset Tag	Amount	Liquidated	
<b>110868</b>	<b>JEWELL ASSOCIATES ENGINEERS INC</b>																		
02	C 11/18/22			JEWELL ASSOCIATES ENGINEERS INC	560 SUNRISE DR SPRING GREEN WI 53588														
																	<b>Invoice Total:</b>		
																	<b>Check Total:</b>	<b>38,613.39</b>	38,613.39
																	<b>Vendor Total:</b>	<b>38,613.39</b>	<b>38,613.39</b>
<b>128880</b>	<b>LEADER TELEGRAM/LEADER PRINTING</b>																		
02	C 11/18/22			APG MEDIA OF WI LLC	PO BOX 410 ASHLAND WI 54806														
				EC11013986-1022					1	NA				PIM PROJECT NOTICES 10/12 & 10/122001853	35	1	110.29	110.29	
														Cash: 22-701-00-11110-000-000-000-000-000			110.29	110.29	
														TREASURER'S CASH/ HIGHWAY					
																	<b>Invoice Total:</b>	<b>110.29</b>	<b>110.29</b>
																	<b>Check Total:</b>	<b>110.29</b>	<b>110.29</b>
																	<b>Vendor Total:</b>	<b>110.29</b>	<b>110.29</b>
<b>147168</b>	<b>LINDSTROM EQUIPMENT INC</b>																		
02	C 11/18/22			LINDSTROM EQUIPMENT INC	S927 COUNTY RD J MONDOVI WI 54755														
				IB68367					1	NA				BOLT/RELAY	22001853	36	1	99.86	99.86
														Cash: 22-701-00-11110-000-000-000-000-000			99.86	99.86	
														TREASURER'S CASH/ HIGHWAY					
																	<b>Invoice Total:</b>	<b>99.86</b>	<b>99.86</b>
																	<b>Check Total:</b>	<b>99.86</b>	<b>99.86</b>
																	<b>Vendor Total:</b>	<b>99.86</b>	<b>99.86</b>
<b>5742</b>	<b>MARKET &amp; JOHNSON INC</b>																		
02	C 11/18/22			MARKET & JOHNSON INC	PO BOX 6302350 GALLOWAY ST EAU CLAIRE WI 547020630														
				102251					1	NA				NEW HWY FACILITY CONSTRUCTION	22001853	37	1	623,716.82	623,716.82
														Cash: 22-701-00-11110-000-000-000-000-000			623,716.82	623,716.82	
														TREASURER'S CASH/ HIGHWAY					
																	<b>Invoice Total:</b>	<b>623,716.82</b>	<b>623,716.82</b>
																	<b>Check Total:</b>	<b>99.86</b>	<b>99.86</b>
																	<b>Vendor Total:</b>	<b>99.86</b>	<b>99.86</b>
				102251					1	NA				NEW HWY FACILITY CONSTRUCTION	22001853	38	1	2,130,470.53	2,130,470.53
														Cash: 22-701-00-11110-000-000-000-000-000			2,130,470.53	2,130,470.53	
														TREASURER'S CASH/ HIGHWAY					
																	<b>Invoice Total:</b>	<b>2,130,470.53</b>	<b>2,130,470.53</b>
																	<b>Check Total:</b>	<b>173,199.43</b>	<b>173,199.43</b>
																	<b>Vendor Total:</b>	<b>173,199.43</b>	<b>173,199.43</b>
				102251					1	NA				NEW HWY FACILITY CONSTRUCTION	22001853	39	1	173,199.43	173,199.43
														Cash: 22-701-00-11110-000-000-000-000-000			173,199.43	173,199.43	
														TREASURER'S CASH/ HIGHWAY					
																	<b>Invoice Total:</b>	<b>173,199.43</b>	<b>173,199.43</b>
																	<b>Check Total:</b>	<b>996.84</b>	<b>996.84</b>
																	<b>Vendor Total:</b>	<b>996.84</b>	<b>996.84</b>
				102251					1	NA				NEW HWY FACILITY CONSTRUCTION	22001853	40	1	996.84	996.84

Report Date 11/15/22 01:47 PM  
 For Batches 001853 -001853 , - , -  
 Payment Request Date 11/18/22

County of Eau Claire  
 Payment Request Edit

Vendor No	Vendor Name	Address	App. Status	Amount	Liquidated
Check No	Date To Pay	Mailing Name			
Claim No	PO No	Line Invoice No	Acc Ctl 1099 Description	Batch-Trans-Line Asset Tag	
<b>5742</b>	<b>MARKET &amp; JOHNSON INC</b>				
02	C 11/18/22	MARKET & JOHNSON INC	PO BOX 6302350 GALLOWAY ST EAU CLAIRE WI 547020630		
		102251	1 NA NEW HWY FACILITY CONSTRUCTION	22001853 40 1	996.84 996.84
			Cash: 22-701-00-11110-000-000-000-000-000		996.84 996.84
			NEW HWY FACILITY/ROADWAY SUPPLIES	TREASURER'S CASH/ HIGHWAY	
				<b>Invoice Total:</b>	<b>996.84 996.84</b>
		102251	1 NA NEW HWY FACILITY CONSTRUCTION	22001853 41 1	829.40 829.40
			Cash: 22-701-00-11110-000-000-000-000-000		829.40 829.40
			NEW HWY FACILITY/ROADWAY SUPPLIES	TREASURER'S CASH/ HIGHWAY	
				<b>Invoice Total:</b>	<b>829.40 829.40</b>
		102251	1 NA NEW HWY FACILITY CONSTRUCTION	22001853 42 1	50,233.11 50,233.11
			Cash: 22-701-00-11110-000-000-000-000-000		50,233.11 50,233.11
			NEW HWY FACILITY/ROADWAY SUPPLIES	TREASURER'S CASH/ HIGHWAY	
				<b>Invoice Total:</b>	<b>50,233.11 50,233.11</b>
				<b>Check Total:</b>	<b>2,979,446.13 2,979,446.13</b>
				<b>Vendor Total:</b>	<b>2,979,446.13 2,979,446.13</b>
<b>5264</b>	<b>MASON SHOE</b>				
02	C 11/18/22	MASON COMPANIES INC	301 N BRIDGE ST CHIPPEWA FALLS WI 54729		
		135350260	1 NA JODY RAMSIER BOOT VOUCHERS	22001853 43 1	200.00 200.00
			Cash: 22-701-00-11110-000-000-000-000-000		200.00 200.00
			FIELD SMALL TOOLS/ ROADWAY SUPPLIES	TREASURER'S CASH/ HIGHWAY	
				<b>Invoice Total:</b>	<b>200.00 200.00</b>
				<b>Check Total:</b>	<b>200.00 200.00</b>
				<b>Vendor Total:</b>	<b>200.00 200.00</b>
<b>5973</b>	<b>NAPA AUTO PARTS</b>				
02	C 11/18/22	KENSON PARTS GROUP INC	DBA NAPA AUTO PARTS3580 MALL DR EAU CLAIRE WI 54701		
		715902	1 NA WINDOW CRANK HANDLE	22001853 44 1	32.13 32.13
			Cash: 22-701-00-11110-000-000-000-000-000		32.13 32.13
			REPAIR PARTS-DIRECT CHARGE (CLRNG ACCT)	TREASURER'S CASH/ HIGHWAY	
				<b>Invoice Total:</b>	<b>32.13 32.13</b>
		715915	1 NA ADAPTERS	22001853 45 1	37.96 37.96
			Cash: 22-701-00-11110-000-000-000-000-000		37.96 37.96
			REPAIR PARTS-DIRECT CHARGE (CLRNG ACCT)	TREASURER'S CASH/ HIGHWAY	
				<b>Invoice Total:</b>	<b>37.96 37.96</b>
		716360	1 NA TOOLS	22001853 46 1	3.06 3.06



Report Date 11/15/22 01:47 PM  
 For Batches 001853 -001853 , - , -  
 Payment Request Date 11/18/22

County of Eau Claire  
 Payment Request Edit

Page No 9  
 FPEDT01B

Vendor No	Vendor Name	Check No	Date To Pay	Mailing Name	Address	App. Status	Claim No	PO No	Line	Invoice No	Acc Ctl 1099	Description	Batch-Trans-Line	Asset Tag	Amount	Liquidated		
4036	RIVER STATES TRUCK & TRAILER INC																	
02	C 11/18/22			RIVER STATES TRUCK & TRAILER INC	ACCOUNTING DEPT3959 N KINNEY COULEE RD LACROSSE WI 54601													
				2583947					1	NA		ANTEN DISP4	22001853	51	1	6.85	6.85	
					Cash: 22-701-00-11110-000-000-000-000-000											6.85	6.85	
					REPAIR PARTS-DIRECT CHARGE (CLRNG ACCT)							TREASURER'S CASH/ HIGHWAY						
																<b>Invoice Total:</b>	<b>6.85</b>	<b>6.85</b>
																<b>Check Total:</b>	<b>6.85</b>	<b>6.85</b>
																<b>Vendor Total:</b>	<b>6.85</b>	<b>6.85</b>
3042	RONCO ENGINEERING SALES CO INC																	
02	C 11/18/22			RONCO ENGINEERING SALES INC	PO BOX 8891755 RONCO AVE WINONA MN 559870889													
				3303072					1	NA		PARTS	22001853	52	1	133.85	133.85	
					Cash: 22-701-00-11110-000-000-000-000-000											133.85	133.85	
					REPAIR PARTS							TREASURER'S CASH/ HIGHWAY						
																<b>Invoice Total:</b>	<b>133.85</b>	<b>133.85</b>
				3303104					1	NA		CHAIN	22001853	53	1	363.54	363.54	
					Cash: 22-701-00-11110-000-000-000-000-000											363.54	363.54	
					REPAIR PARTS							TREASURER'S CASH/ HIGHWAY						
																<b>Invoice Total:</b>	<b>363.54</b>	<b>363.54</b>
				3303105					1	NA		CHAIN	22001853	54	1	272.66	272.66	
					Cash: 22-701-00-11110-000-000-000-000-000											272.66	272.66	
					REPAIR PARTS							TREASURER'S CASH/ HIGHWAY						
																<b>Invoice Total:</b>	<b>272.66</b>	<b>272.66</b>
				3303120					1	NA		COUPLER	22001853	55	1	286.31	286.31	
					Cash: 22-701-00-11110-000-000-000-000-000											286.31	286.31	
					REPAIR PARTS							TREASURER'S CASH/ HIGHWAY						
																<b>Invoice Total:</b>	<b>286.31</b>	<b>286.31</b>
				3303202					1	NA		FEMALE ADAPTER	22001853	56	1	42.60	42.60	
					Cash: 22-701-00-11110-000-000-000-000-000											42.60	42.60	
					REPAIR PARTS-DIRECT CHARGE (CLRNG ACCT)							TREASURER'S CASH/ HIGHWAY						
																<b>Invoice Total:</b>	<b>42.60</b>	<b>42.60</b>
				3303767					1	NA		PARTS	22001853	57	1	377.09	377.09	
					Cash: 22-701-00-11110-000-000-000-000-000											377.09	377.09	
					REPAIR PARTS							TREASURER'S CASH/ HIGHWAY						
																<b>Invoice Total:</b>	<b>377.09</b>	<b>377.09</b>

Report Date 11/15/22 01:47 PM  
 For Batches 001853 -001853 ,  
 Payment Request Date 11/18/22

**County of Eau Claire**  
 Payment Request Edit

Page No 10  
 FPEDT01B

Vendor No	Vendor Name	Address	App. Status	Amount	Liquidated
Check No	Date To Pay	Mailing Name			
Claim No	PO No	Line Invoice No	Acc Ctl 1099 Description	Batch-Trans-Line Asset Tag	
<b>3042</b>	<b>RONCO ENGINEERING SALES CO INC</b>				
02	C 11/18/22	RONCO ENGINEERING SALES INC			
		3303959	1 NA PARTS	22001853 58 1	329.90 329.90
			Cash: 22-701-00-11110-000-000-000-000-000		329.90 329.90
			REPAIR PARTS-DIRECT CHARGE (CLRNG ACCT) TREASURER'S CASH/ HIGHWAY		
				<b>Invoice Total:</b>	<b>329.90 329.90</b>
				<b>Check Total:</b>	<b>1,805.95 1,805.95</b>
				<b>Vendor Total:</b>	<b>1,805.95 1,805.95</b>
<b>63894</b>	<b>RUBBER INC</b>				
02	C 11/18/22	RUBBER INC			
		405548	1 NA TRUCK VALVE	22001853 59 1	45.42 45.42
			Cash: 22-701-00-11110-000-000-000-000-000		45.42 45.42
			REPAIR PARTS-DIRECT CHARGE (CLRNG ACCT) TREASURER'S CASH/ HIGHWAY		
				<b>Invoice Total:</b>	<b>45.42 45.42</b>
				<b>Check Total:</b>	<b>45.43 45.43</b>
				<b>Vendor Total:</b>	<b>90.85 90.85</b>
<b>131091</b>	<b>SHOE DOCTOR LLC</b>				
02	C 11/18/22	THE SHOE DOCTOR LLC			
		6435	1 NA BOOT VCHR/HAAN/ENGEN/GOTLIBSON	22001853 61 1	400.00 400.00
			Cash: 22-701-00-11110-000-000-000-000-000		400.00 400.00
			FIELD SMALL TOOLS/ ROADWAY SUPPLIES TREASURER'S CASH/ HIGHWAY		
				<b>Invoice Total:</b>	<b>400.00 400.00</b>
				<b>Check Total:</b>	<b>400.00 400.00</b>
				<b>Vendor Total:</b>	<b>400.00 400.00</b>
<b>161378</b>	<b>SMITH RESTORATIONS INC</b>				
02	C 11/18/22	SMITH RESTORATIONS INC			
		1117	1 NA VV TO O PROJECT	22001853 62 1	36,154.66 36,154.66
			Cash: 22-701-00-11110-000-000-000-000-000		36,154.66 36,154.66
			CTHS ROAD CONST/Roadway Supplies TREASURER'S CASH/ HIGHWAY		
				<b>Invoice Total:</b>	<b>36,154.66 36,154.66</b>
				<b>Check Total:</b>	<b>26,098.66 26,098.66</b>
				<b>Vendor Total:</b>	<b>400.00 400.00</b>





Report Date 11/15/22 01:47 PM  
 For Batches 001853 -001853 , - , -  
 Payment Request Date 11/18/22

County of Eau Claire  
 Payment Request Edit

Page No 12  
 FPEDT01B

Vendor No	Vendor Name	Address	App. Status	Amount	Liquidated
Check No	Date To Pay	Mailing Name			
Claim No	PO No	Line Invoice No	Acc Ctl 1099 Description	Batch-Trans-Line Asset Tag	
<b>7495</b>	<b>UNIVERSAL TRUCK EQUIPMENT</b>				
02	C 11/18/22	UNIVERSAL TRUCK EQUIPMENT	N 15921 SCHUBERT ROAD GALESVILLE WI 54630		
		58681	1 NA PLOW LIGHTS	22001853 69 1	1,400.00 1,400.00
			Cash: 22-701-00-11110-000-000-000-000-000		1,400.00 1,400.00
			REPAIR PARTS	TREASURER'S CASH/ HIGHWAY	
				<b>Invoice Total:</b>	<b>1,400.00 1,400.00</b>
		58682	1 NA REVERSING CYLINDER	22001853 70 1	1,125.57 1,125.57
			Cash: 22-701-00-11110-000-000-000-000-000		1,125.57 1,125.57
			REPAIR PARTS-DIRECT CHARGE (CLRNG ACCT)	TREASURER'S CASH/ HIGHWAY	
				<b>Invoice Total:</b>	<b>1,125.57 1,125.57</b>
		58692	1 NA TEMPERATURE SENSOR	22001853 71 1	1,360.25 1,360.25
			Cash: 22-701-00-11110-000-000-000-000-000		1,360.25 1,360.25
			REPAIR PARTS	TREASURER'S CASH/ HIGHWAY	
				<b>Invoice Total:</b>	<b>1,360.25 1,360.25</b>
		58705	1 NA REVERSING CYLINDER	22001853 72 1	775.21 775.21
			Cash: 22-701-00-11110-000-000-000-000-000		775.21 775.21
			REPAIR PARTS	TREASURER'S CASH/ HIGHWAY	
				<b>Invoice Total:</b>	<b>775.21 775.21</b>
		58711	1 NA BRACKET	22001853 73 1	228.35 228.35
			Cash: 22-701-00-11110-000-000-000-000-000		228.35 228.35
			REPAIR PARTS-DIRECT CHARGE (CLRNG ACCT)	TREASURER'S CASH/ HIGHWAY	
				<b>Invoice Total:</b>	<b>228.35 228.35</b>
		58739	1 NA HEEL LIFT CYLINDER	22001853 74 1	537.18 537.18
			Cash: 22-701-00-11110-000-000-000-000-000		537.18 537.18
			REPAIR PARTS-DIRECT CHARGE (CLRNG ACCT)	TREASURER'S CASH/ HIGHWAY	
				<b>Invoice Total:</b>	<b>537.18 537.18</b>
		58740	1 NA HOSE COUPLING	22001853 75 1	277.50 277.50
			Cash: 22-701-00-11110-000-000-000-000-000		277.50 277.50
			REPAIR PARTS-DIRECT CHARGE (CLRNG ACCT)	TREASURER'S CASH/ HIGHWAY	
				<b>Invoice Total:</b>	<b>277.50 277.50</b>
				<b>Check Total:</b>	<b>7,186.31 7,186.31</b>
				<b>Vendor Total:</b>	<b>7,186.31 7,186.31</b>
<b>142590</b>	<b>WAYTEK INC</b>				
02	C 11/18/22	WAYTEK INC	PO BOX 1727 MINNEAPOLIS MN 55440		
		3444156	1 NA CABLE TIES	22001853 76 1	130.77 130.77

Report Date 11/15/22 01:47 PM  
 For Batches 001853 -001853 , - , -  
 Payment Request Date 11/18/22

**County of Eau Claire**  
 Payment Request Edit

Page No 13  
 FPEDT01B

Vendor No	Vendor Name	Address	App. Status	Amount	Liquidated	
142590	WAYTEK INC					
02	C 11/18/22 WAYTEK INC	PO BOX 1727 MINNEAPOLIS MN 55440				
	3444156	1 NA CABLE TIES	22001853 76 1	130.77	130.77	
22-701-31-53230-350-000-000-000-000				Cash: 22-701-00-11110-000-000-000-000-000	130.77	130.77
SHOP/ REPAIR & MAINT SUPPLIES				TREASURER'S CASH/ HIGHWAY		
				<b>Invoice Total:</b>	<b>130.77</b>	<b>130.77</b>
				<b>Check Total:</b>	<b>130.77</b>	<b>130.77</b>
				<b>Vendor Total:</b>	<b>130.77</b>	<b>130.77</b>
8014	WISCONSIN COUNTY HIGHWAY ASSN					
02	C 11/18/22 GARY L KENNEDY WCHA	PROFESSIONAL DEVELOPMENT COORDINATOR1355 N 16TH ST MANITOWOC WI 54220				
	8014-092622	1 NA OCT 2022 TRAINING/5 REGISTRATION	22001853 77 1	1,000.00	1,000.00	
22-701-31-53321-370-000-000-000-000				Cash: 22-701-00-11110-000-000-000-000-000	1,000.00	1,000.00
STHS MAINT/ROADWAY SUPPLIES				TREASURER'S CASH/ HIGHWAY		
				<b>Invoice Total:</b>	<b>1,000.00</b>	<b>1,000.00</b>
	8014-110122	1 NA SNOW FIGHTER TRAINING	22001853 78 1	12,000.00	12,000.00	
22-701-31-53321-370-000-000-000-000				Cash: 22-701-00-11110-000-000-000-000-000	12,000.00	12,000.00
STHS MAINT/ROADWAY SUPPLIES				TREASURER'S CASH/ HIGHWAY		
				<b>Invoice Total:</b>	<b>12,000.00</b>	<b>12,000.00</b>
				<b>Check Total:</b>	<b>13,000.00</b>	<b>13,000.00</b>
				<b>Vendor Total:</b>	<b>13,000.00</b>	<b>13,000.00</b>
				<b>Total Manual Checks:</b>	<b>.00</b>	<b>Total Liquidated: 3,296,064.49</b>
				<b>Total Computer Checks:</b>	<b>3,296,064.49</b>	
				<b>Total ACH Checks:</b>	<b>.00</b>	
				<b>Total Electronic Checks:</b>	<b>.00</b>	
				<b>Total Other Checks:</b>	<b>.00</b>	
				<b>Total Unposted Payment Requests:</b>	<b>3,296,064.49</b>	
				<b>Total Posted Payment Requests:</b>	<b>.00</b>	
				<b>Grand Total:</b>	<b>3,296,064.49</b>	
				<b>Estimated No. of Checks:</b>	<b>29</b>	
<b>Fund:</b>		<b>Amount</b>	<b>Liquidated</b>			
701		3,296,064.49	3,296,064.49			
<b>Total of all Funds:</b>		<u>3,296,064.49</u>	<u>3,296,064.49</u>			

Report Date 11/15/22 01:47 PM  
For Batches 001853 -001853 , - , -  
Payment Request Date 11/18/22

**County of Eau Claire**  
Payment Request Edit

Page No 14  
FPEDT01B

---

Vendor No	Vendor Name									
Check No	Date To Pay	Mailing Name		Address				App. Status		
Claim No	PO No	Line	Invoice No	Acc Ctl 1099	Description	Batch-Trans-Line	Asset Tag	Amount	Liquidated	
	<u>Bank No</u>				<u>Bank Total</u>					
	02				3,296,064.49					

Report Date 11/15/22 01:47 PM  
For Batches 001853 -001853 , - , -  
Payment Request Date 11/18/22

**County of Eau Claire**  
Payment Request Edit

Page No 15  
FPEDT01B

---

Vendor No	Vendor Name								
Check No	Date To Pay	Mailing Name		Address			App. Status		
Claim No	PO No	Line	Invoice No	Acc Ctl 1099	Description	Batch-Trans-Line	Asset Tag	Amount	Liquidated

**Note: The following Payment Vendors are not the same as the PO Vendors.**

Check Key	PO No	Payment Vendor	PO Vendor	Batch\Y\N	Trans Line
-----------	-------	----------------	-----------	-----------	------------

**Note: The following errors have been recorded.**

Report Date 11/15/22 01:47 PM  
For Batches ALL -  
Payment Request Date 11/18/22

County of Eau Claire  
Payment Request Edit

Page No 16  
FPEDT01B

---

The following are checks with negative amounts:

<u>Check Key</u>	<u>Payment Date</u>	<u>Payment Amount</u>	<u>Vendor</u>
------------------	---------------------	-----------------------	---------------

PAYMENT AUTHORIZATION SIGNATURE PAGE

Entered \_\_\_\_\_

Batch No: 22-001887

Reconciled \_\_\_\_\_

Payment Total: \$ 711,228.65 ✓

Posted \_\_\_\_\_

Check Issuance Date: 12/02/2022

Highway Commissioner Jon Johnson

\_\_\_\_\_

Assistant Commissioner Brian Spilde

\_\_\_\_\_

Fiscal Supervisor Kyle Welbes

\_\_\_\_\_

Accountant Kelsey Weigel

*Kelsey Weigel*

HIGHWAY COMMITTEE

Steve Chilson, Chair

\_\_\_\_\_

Nathan Otto, Vice-Chair

\_\_\_\_\_

Judy Gatlin

\_\_\_\_\_

Mark Beckfield

\_\_\_\_\_

Larry Hoekstra

\_\_\_\_\_

County of Eau Claire

Report Date 11/28/22 02:18 PM

Payment Request Edit

FPEDT01B

Report Parameters

Print Options

Print Option:	Posted & Unposted
Print Accounting:	Yes
Print \$0 Net Checks:	Yes
Print Approval Information:	No
Include Payments With Printed Checks:	No
Sort Option:	Vendor Name

Selection Criteria

Batch Year:	22	
Batch Range 1:	001887	001887
Batch Range 2:		
Batch Range 3:		
Payment Request Date:	12/02/2022	
Access Code:	N/A	





Report Date 11/28/22 02:18 PM  
 For Batches 001887 -001887 , - , -  
 Payment Request Date 12/02/22

County of Eau Claire  
 Payment Request Edit

Vendor No	Vendor Name	Check No	Date To Pay	Mailing Name	Address	App. Status	Claim No	PO No	Line	Invoice No	Acc Ctl 1099	Description	Batch-Trans-Line	Asset Tag	Amount	Liquidated
<b>2342</b>	<b>AUTO VALUE EAU CLAIRE/APH STORES INC</b>															
02	C 12/02/22			AUTO VALUE EAU CLAIRE	3235 E HAMILTON AVE EAU CLAIRE WI 54701											
				80145141					1	NA		RETURN OF INV 80145117	22001887	6 1	-108.00	-108.00
															-108.00	-108.00
				REPAIR PARTS-DIRECT CHARGE (CLRNG ACCT)	TREASURER'S CASH/ HIGHWAY											
															<b>Invoice Total:</b>	<b>-108.00</b>
				80145503					1	NA		LED STOP & TAIL KIT	22001887	7 1	70.38	70.38
															70.38	70.38
				22-701-00-16151-000-000-000-000-000	Cash: 22-701-00-11110-000-000-000-000-000										70.38	70.38
				REPAIR PARTS-DIRECT CHARGE (CLRNG ACCT)	TREASURER'S CASH/ HIGHWAY											
															<b>Invoice Total:</b>	<b>70.38</b>
				80145537					1	NA		BATTERY	22001887	8 1	326.46	326.46
															326.46	326.46
				22-701-00-16151-000-000-000-000-000	Cash: 22-701-00-11110-000-000-000-000-000										326.46	326.46
				REPAIR PARTS-DIRECT CHARGE (CLRNG ACCT)	TREASURER'S CASH/ HIGHWAY											
															<b>Invoice Total:</b>	<b>326.46</b>
				80145574					1	NA		MALE PIPE	22001887	9 1	7.98	7.98
															7.98	7.98
				22-701-00-16151-000-000-000-000-000	Cash: 22-701-00-11110-000-000-000-000-000										7.98	7.98
				REPAIR PARTS-DIRECT CHARGE (CLRNG ACCT)	TREASURER'S CASH/ HIGHWAY											
															<b>Invoice Total:</b>	<b>7.98</b>
				80145648					1	NA		BATTERY	22001887	10 1	363.18	363.18
															363.18	363.18
				22-701-31-53270-370-000-000-000-000	Cash: 22-701-00-11110-000-000-000-000-000										363.18	363.18
				BLDING & GRD OPS/RDWAY SUPP	TREASURER'S CASH/ HIGHWAY											
															<b>Invoice Total:</b>	<b>363.18</b>
				80145697					1	NA		BACK UP ALARM	22001887	11 1	49.29	49.29
															49.29	49.29
				22-701-00-16121-000-000-000-000-000	Cash: 22-701-00-11110-000-000-000-000-000										49.29	49.29
				REPAIR PARTS	TREASURER'S CASH/ HIGHWAY											
															<b>Invoice Total:</b>	<b>49.29</b>
				80145747					1	NA		RETURN INV 80145537/80145648	22001887	12 1	-54.00	-54.00
															-54.00	-54.00
				22-701-31-53230-350-000-000-000-000	Cash: 22-701-00-11110-000-000-000-000-000										-54.00	-54.00
				SHOP/ REPAIR & MAINT SUPPLIES	TREASURER'S CASH/ HIGHWAY											
															<b>Invoice Total:</b>	<b>-54.00</b>
				80145747					1	NA		RETURN INV 80145537/80145648	22001887	13 1	-54.00	-54.00
															-54.00	-54.00
				22-701-00-16151-000-000-000-000-000	Cash: 22-701-00-11110-000-000-000-000-000										-54.00	-54.00
				REPAIR PARTS-DIRECT CHARGE (CLRNG ACCT)	TREASURER'S CASH/ HIGHWAY											
															<b>Invoice Total:</b>	<b>-54.00</b>

Report Date 11/28/22 02:18 PM  
 For Batches 001887 -001887 , - , -  
 Payment Request Date 12/02/22

County of Eau Claire  
 Payment Request Edit

Page No 3  
 FPEDT01B

Vendor No	Vendor Name	Check No	Date To Pay	Mailing Name	Address	App. Status	Claim No	PO No	Line	Invoice No	Acc	Ctl	1099	Description	Batch-Trans-Line	Asset Tag	Amount	Liquidated	
<b>2342</b>	<b>AUTO VALUE EAU CLAIRE/APH STORES INC</b>																		
02	C 12/02/22			AUTO VALUE EAU CLAIRE	3235 E HAMILTON AVE EAU CLAIRE WI 54701														
				80145806										1 NA HD OIL FARM	22001887 14 1		11.86	11.86	
					Cash: 22-701-00-11110-000-000-000-000-000												11.86	11.86	
					REPAIR PARTS-DIRECT CHARGE (CLRNG ACCT)									TREASURER'S CASH/ HIGHWAY					
				80145813										1 NA HD AIR CONSTRUCTION	22001887 15 1		32.23	32.23	
					Cash: 22-701-00-11110-000-000-000-000-000												32.23	32.23	
					REPAIR PARTS-DIRECT CHARGE (CLRNG ACCT)									TREASURER'S CASH/ HIGHWAY					
				80146305										1 NA BATTERY	22001887 16 1		136.27	136.27	
					Cash: 22-701-00-11110-000-000-000-000-000												136.27	136.27	
					REPAIR PARTS-DIRECT CHARGE (CLRNG ACCT)									TREASURER'S CASH/ HIGHWAY					
				80146326										1 NA MINI BLADE FUSE	22001887 17 1		11.98	11.98	
					Cash: 22-701-00-11110-000-000-000-000-000												11.98	11.98	
					SHOP/ REPAIR & MAINT SUPPLIES														
				80146330										1 NA MALE O RING	22001887 18 1		13.38	13.38	
					Cash: 22-701-00-11110-000-000-000-000-000												13.38	13.38	
					REPAIR PARTS-DIRECT CHARGE (CLRNG ACCT)									TREASURER'S CASH/ HIGHWAY					
				80146410										1 NA MALE O RING	22001887 19 1		53.52	53.52	
					Cash: 22-701-00-11110-000-000-000-000-000												53.52	53.52	
					REPAIR PARTS-DIRECT CHARGE (CLRNG ACCT)									TREASURER'S CASH/ HIGHWAY					
				80146411										1 NA MINI BLADE FUSE	22001887 20 1		29.85	29.85	
					Cash: 22-701-00-11110-000-000-000-000-000												29.85	29.85	
					SHOP/ REPAIR & MAINT SUPPLIES									TREASURER'S CASH/ HIGHWAY					
				80146440										1 NA STANDARD HALOGEN	22001887 21 1		8.79	8.79	
					Cash: 22-701-00-11110-000-000-000-000-000												8.79	8.79	
					REPAIR PARTS-DIRECT CHARGE (CLRNG ACCT)									TREASURER'S CASH/ HIGHWAY					
																	<b>8.79</b>	<b>8.79</b>	

Report Date 11/28/22 02:18 PM  
 For Batches 001887 -001887 , - , -  
 Payment Request Date 12/02/22

County of Eau Claire  
 Payment Request Edit

Vendor No	Vendor Name	Check No	Date To Pay	Mailing Name	Address	App. Status	Claim No	PO No	Line	Invoice No	Acc	Ctl	1099	Description	Batch-Trans-Line	Asset Tag	Amount	Liquidated
<b>2342</b>	<b>AUTO VALUE EAU CLAIRE/APH STORES INC</b>																	
02	C 12/02/22			AUTO VALUE EAU CLAIRE	3235 E HAMILTON AVE EAU CLAIRE WI 54701													
				80146449			1	NA	BACK UP ALARM					22001887	22	1	49.29	49.29
					Cash: 22-701-00-11110-000-000-000-000-000												49.29	49.29
					REPAIR PARTS-DIRECT CHARGE (CLRNG ACCT)													
					TREASURER'S CASH/ HIGHWAY													
																	<b>49.29</b>	<b>49.29</b>
				80146449			1	NA	BACK UP ALARM					22001887	23	1	49.29	49.29
					Cash: 22-701-00-11110-000-000-000-000-000												49.29	49.29
					REPAIR PARTS-DIRECT CHARGE (CLRNG ACCT)													
					TREASURER'S CASH/ HIGHWAY													
																	<b>49.29</b>	<b>49.29</b>
				80146449			1	NA	BACK UP ALARM					22001887	24	1	49.29	49.29
					Cash: 22-701-00-11110-000-000-000-000-000												49.29	49.29
					REPAIR PARTS-DIRECT CHARGE (CLRNG ACCT)													
					TREASURER'S CASH/ HIGHWAY													
																	<b>49.29</b>	<b>49.29</b>
				80146488			1	NA	WHEEL SPINNER					22001887	25	1	15.95	15.95
					Cash: 22-701-00-11110-000-000-000-000-000												15.95	15.95
					REPAIR PARTS-DIRECT CHARGE (CLRNG ACCT)													
					TREASURER'S CASH/ HIGHWAY													
																	<b>15.95</b>	<b>15.95</b>
				80146493			1	NA	PREMIUM AUTOMOTIVE					22001887	26	1	35.81	35.81
					Cash: 22-701-00-11110-000-000-000-000-000												35.81	35.81
					REPAIR PARTS-DIRECT CHARGE (CLRNG ACCT)													
					TREASURER'S CASH/ HIGHWAY													
																	<b>35.81</b>	<b>35.81</b>
				80146501			1	NA	AUTOMOTIVE V-RIBBED					22001887	27	1	43.03	43.03
					Cash: 22-701-00-11110-000-000-000-000-000												43.03	43.03
					REPAIR PARTS-DIRECT CHARGE (CLRNG ACCT)													
					TREASURER'S CASH/ HIGHWAY													
																	<b>43.03</b>	<b>43.03</b>
				80146509			1	NA	40 LB FLOOR DRY					22001887	28	1	235.35	235.35
					Cash: 22-701-00-11110-000-000-000-000-000												235.35	235.35
					SHOP/ REPAIR & MAINT SUPPLIES													
					TREASURER'S CASH/ HIGHWAY													
																	<b>235.35</b>	<b>235.35</b>
				80146576			1	NA	MINIATURE LAMP					22001887	29	1	7.90	7.90
					Cash: 22-701-00-11110-000-000-000-000-000												7.90	7.90
					REPAIR PARTS-DIRECT CHARGE (CLRNG ACCT)													
					TREASURER'S CASH/ HIGHWAY													
																	<b>7.90</b>	<b>7.90</b>

Report Date 11/28/22 02:18 PM  
 For Batches 001887 -001887 , - , -  
 Payment Request Date 12/02/22

County of Eau Claire  
 Payment Request Edit

Vendor No	Vendor Name	Address	App. Status	Amount	Liquidated
Check No	Date To Pay	Mailing Name			
Claim No	PO No	Line Invoice No	Acc Ctl 1099 Description	Batch-Trans-Line Asset Tag	
<b>2342</b>	<b>AUTO VALUE EAU CLAIRE/APH STORES INC</b>				
02	C 12/02/22	AUTO VALUE EAU CLAIRE			
		80146974	3235 E HAMILTON AVE EAU CLAIRE WI 54701		
			1 NA REPLACEMENT LANYARD	22001887 30 1	7.69 7.69
			Cash: 22-701-00-11110-000-000-000-000-000		7.69 7.69
			REPAIR PARTS-DIRECT CHARGE (CLRNG ACCT) TREASURER'S CASH/ HIGHWAY		
			<b>Invoice Total:</b>	<b>7.69</b>	<b>7.69</b>
			<b>Check Total:</b>	<b>1,946.35</b>	<b>1,946.35</b>
			<b>Vendor Total:</b>	<b>1,946.35</b>	<b>1,946.35</b>
<b>1145</b>	<b>AYRES ASSOCIATES</b>				
02	C 12/02/22	AYRES ASSOCIATES			
		203543	3433 OAKWOOD HILLS PKWY EAU CLAIRE WI 54701		
			1 NA CTH H BRIDGE DESIGN THRU 11/5/2222001887	31 1	16,568.00 16,568.00
			Cash: 22-701-00-11110-000-000-000-000-000		16,568.00 16,568.00
			CTHS ROAD CONST/ ROADWAY SUPPLIES TREASURER'S CASH/ HIGHWAY		
			<b>Invoice Total:</b>	<b>16,568.00</b>	<b>16,568.00</b>
			<b>Check Total:</b>	<b>16,568.00</b>	<b>16,568.00</b>
			<b>Vendor Total:</b>	<b>16,568.00</b>	<b>16,568.00</b>
<b>3333</b>	<b>BARTINGALE MECHANICAL</b>				
02	C 12/02/22	THE JAMAR COMPANY			
		BAR001579	DBA BARTINGALE MECHANICAL4701 MIKE COLALILLO DR DULUTH MN 55807		
			1 NA TESTING BACKFLOW PREVENTERS	22001887 32 1	336.40 336.40
			Cash: 22-701-00-11110-000-000-000-000-000		336.40 336.40
			BLDING & GRD OPS/RDWAY SUPP TREASURER'S CASH/ HIGHWAY		
			<b>Invoice Total:</b>	<b>336.40</b>	<b>336.40</b>
			<b>Check Total:</b>	<b>336.40</b>	<b>336.40</b>
			<b>Vendor Total:</b>	<b>336.40</b>	<b>336.40</b>
<b>26719</b>	<b>CHIPPEWA CONCRETE SERVICES INC</b>				
02	C 12/02/22	CHIPPEWA CONCRETE SERVICES INC			
		23388	3030 110TH ST CHIPPEWA FALLS WI 54729		
			1 NA DOWEL BARS	22001887 33 1	1,309.15 1,309.15
			Cash: 22-701-00-11110-000-000-000-000-000		1,309.15 1,309.15
			STHS MAINT/ROADWAY SUPPLIES TREASURER'S CASH/ HIGHWAY		
			<b>Invoice Total:</b>	<b>1,309.15</b>	<b>1,309.15</b>
			<b>Check Total:</b>	<b>1,309.15</b>	<b>1,309.15</b>
			<b>Vendor Total:</b>	<b>1,309.15</b>	<b>1,309.15</b>
<b>39608</b>	<b>CHIPPEWA VALLEY ENERGY</b>				
02	C 12/02/22	CHIPPEWA VALLEY ENERGY			
		U2011029	PO BOX 837 EAU CLAIRE WI 547020837		
			1 NA DIESEL FUEL	22001887 34 1	1,187.77 1,187.77
			Cash: 22-701-00-11110-000-000-000-000-000		1,187.77 1,187.77



Report Date 11/28/22 02:18 PM  
 For Batches 001887 -001887 , - , -  
 Payment Request Date 12/02/22

County of Eau Claire  
 Payment Request Edit

Page No 7  
 FPEDT01B

Vendor No	Vendor Name	Check No	Date To Pay	Mailing Name	Address	App. Status	Claim No	PO No	Line	Invoice No	Acc	Ctl 1099	Description	Batch-Trans-Line	Asset Tag	Amount	Liquidated	
<b>2329</b>	<b>CHIPPEWA VALLEY STARTER AND ALTERNATOR</b>																	
02	C 12/02/22			CHIPPEWA VALLEY STARTER AND ALTERNATOR	3219 PLEASANT ST ALTOONA WI 54720													
				29206									1 NA YELLOW TOP	22001887 41 1		624.00	624.00	
													Cash: 22-701-00-11110-000-000-000-000-000			624.00	624.00	
				SHOP/ REPAIR & MAINT SUPPLIES	TREASURER'S CASH/ HIGHWAY													
																<b>Invoice Total:</b>	<b>624.00</b>	<b>624.00</b>
																<b>Check Total:</b>	<b>624.00</b>	<b>624.00</b>
																<b>Vendor Total:</b>	<b>624.00</b>	<b>624.00</b>
<b>54208</b>	<b>CINTAS CORPORATION</b>																	
02	C 12/02/22			CINTAS LOC#16	PO BOX 650838 DALLAS TX 752650838													
				4136263129									1 NA SHOP SUPPLIES	22001887 42 1		22.81	22.81	
													Cash: 22-701-00-11110-000-000-000-000-000			22.81	22.81	
				BLDING & GRD OPS/RDWAY SUPP	TREASURER'S CASH/ HIGHWAY													
																<b>Invoice Total:</b>	<b>22.81</b>	<b>22.81</b>
				4136263129									1 NA FIELD UNIFORMS	22001887 43 1		41.62	41.62	
													Cash: 22-701-00-11110-000-000-000-000-000			41.62	41.62	
				FIELD SMALL TOOLS/ ROADWAY SUPPLIES	TREASURER'S CASH/ HIGHWAY													
																<b>Invoice Total:</b>	<b>41.62</b>	<b>41.62</b>
				4136267155									1 NA SHOP SUPPLIES	22001887 44 1		9.48	9.48	
													Cash: 22-701-00-11110-000-000-000-000-000			9.48	9.48	
				BLDING & GRD OPS/RDWAY SUPP	TREASURER'S CASH/ HIGHWAY													
																<b>Invoice Total:</b>	<b>9.48</b>	<b>9.48</b>
				4136267155									1 NA FIELD UNIFORMS	22001887 45 1		67.41	67.41	
													Cash: 22-701-00-11110-000-000-000-000-000			67.41	67.41	
				FIELD SMALL TOOLS/ ROADWAY SUPPLIES	TREASURER'S CASH/ HIGHWAY													
																<b>Invoice Total:</b>	<b>67.41</b>	<b>67.41</b>
				4136267357									1 NA SHOP SUPPLIES	22001887 46 1		155.53	155.53	
													Cash: 22-701-00-11110-000-000-000-000-000			155.53	155.53	
				BLDING & GRD OPS/RDWAY SUPP	TREASURER'S CASH/ HIGHWAY													
																<b>Invoice Total:</b>	<b>155.53</b>	<b>155.53</b>
				4136267357									1 NA SHOP UNIFORMS	22001887 47 1		79.21	79.21	
													Cash: 22-701-00-11110-000-000-000-000-000			79.21	79.21	
				SHOP/ REPAIR & MAINT SUPPLIES	TREASURER'S CASH/ HIGHWAY													
																<b>Invoice Total:</b>	<b>79.21</b>	<b>79.21</b>
				4136267357									1 NA FIELD UNIFORMS	22001887 48 1		242.28	242.28	





Report Date 11/28/22 02:18 PM  
 For Batches 001887 -001887 , - , -  
 Payment Request Date 12/02/22

County of Eau Claire  
 Payment Request Edit

Vendor No	Vendor Name	Check No	Date To Pay	Mailing Name	Address	App. Status	Claim No	PO No	Line	Invoice No	Acc	Ctl	1099	Description	Batch-Trans-Line	Asset Tag	Amount	Liquidated	
<b>54208</b>	<b>CINTAS CORPORATION</b>																		
02	C 12/02/22			CINTAS LOC#16	PO BOX 650838 DALLAS TX 752650838														
				4137725937										1 NA SHOP SUPPLIES	22001887 56 1		22.81	22.81	
					Cash: 22-701-00-11110-000-000-000-000-000												22.81	22.81	
					TREASURER'S CASH/ HIGHWAY														
																	<b>22.81</b>	<b>22.81</b>	
				4137725937										1 NA FIELD UNIFORMS	22001887 57 1		41.62	41.62	
					Cash: 22-701-00-11110-000-000-000-000-000												41.62	41.62	
					TREASURER'S CASH/ HIGHWAY														
																	<b>41.62</b>	<b>41.62</b>	
				4137732722										1 NA SHOP SUPPLIES	22001887 58 1		9.48	9.48	
					Cash: 22-701-00-11110-000-000-000-000-000												9.48	9.48	
					TREASURER'S CASH/ HIGHWAY														
																	<b>9.48</b>	<b>9.48</b>	
				4137732722										1 NA FIELD UNIFORMS	22001887 59 1		67.41	67.41	
					Cash: 22-701-00-11110-000-000-000-000-000												67.41	67.41	
					TREASURER'S CASH/ HIGHWAY														
																	<b>67.41</b>	<b>67.41</b>	
				4137732879										1 NA SHOP SUPPLIES	22001887 60 1		155.53	155.53	
					Cash: 22-701-00-11110-000-000-000-000-000												155.53	155.53	
					TREASURER'S CASH/ HIGHWAY														
																	<b>155.53</b>	<b>155.53</b>	
				4137732879										1 NA SHOP UNIFORMS	22001887 61 1		60.93	60.93	
					Cash: 22-701-00-11110-000-000-000-000-000												60.93	60.93	
					TREASURER'S CASH/ HIGHWAY														
																	<b>60.93</b>	<b>60.93</b>	
				4137732879										1 NA FIELD UNIFORMS	22001887 62 1		259.48	259.48	
					Cash: 22-701-00-11110-000-000-000-000-000												259.48	259.48	
					TREASURER'S CASH/ HIGHWAY														
																	<b>259.48</b>	<b>259.48</b>	
																	<b>1,866.50</b>	<b>1,866.50</b>	
																	<b>1,866.50</b>	<b>1,866.50</b>	
																	<b>1,866.50</b>	<b>1,866.50</b>	
<b>105309</b>	<b>CORRE INC</b>																		
02	C 12/02/22			CORRE INC	6510 GRAND TETON PLZ STE 314 MADISON WI 53719														
				10403										1 NA CTH D PROJ 10/1/11-10/31/22	22001887 63 1		2,585.00	2,585.00	

Report Date 11/28/22 02:18 PM  
 For Batches 001887 -001887 , - , -  
 Payment Request Date 12/02/22

County of Eau Claire  
 Payment Request Edit

Page No 10  
 FPEDT01B

Vendor No	Vendor Name	Address	App. Status	Amount	Liquidated
Check No	Date To Pay	Mailing Name			
Claim No	PO No	Line Invoice No	Acc Ctl 1099 Description	Batch-Trans-Line Asset Tag	
105309	CORRE INC	6510 GRAND TETON PLZ STE 314 MADISON WI 53719			
02	C 12/02/22	CORRE INC			
		10403	1 NA CTH D PROJ 10/1/11-10/31/22	22001887 63 1	2,585.00 2,585.00
			Cash: 22-701-00-11110-000-000-000-000-000		2,585.00 2,585.00
			TREASURER'S CASH/ HIGHWAY		
			<b>Invoice Total:</b>	<b>2,585.00</b>	<b>2,585.00</b>
			<b>Check Total:</b>	<b>2,585.00</b>	<b>2,585.00</b>
			<b>Vendor Total:</b>	<b>2,585.00</b>	<b>2,585.00</b>
265	COUNTY OF BARRON	INCINERATOR / WASTE TO ENERGY585 10 1/2 AVE ALMENA WI 54805			
02	C 12/02/22	COUNTY OF BARRON			
		174053	1 NA LARGE TIRE DISPOSAL	22001887 64 1	1,128.00 1,128.00
			Cash: 22-701-00-11110-000-000-000-000-000		1,128.00 1,128.00
			TREASURER'S CASH/ HIGHWAY		
			<b>Invoice Total:</b>	<b>1,128.00</b>	<b>1,128.00</b>
			<b>Check Total:</b>	<b>1,128.00</b>	<b>1,128.00</b>
			<b>Vendor Total:</b>	<b>1,128.00</b>	<b>1,128.00</b>
110191	DAHLBY, CHRISTOPHER M				
02	C 12/02/22	CHRISTOPHER M DAHLBY			
		110191-091422	1 NA MEAL REIMBURSEMENT SEPT 2022	22001887 65 1	20.00 20.00
			Cash: 22-701-00-11110-000-000-000-000-000		20.00 20.00
			TREASURER'S CASH/ HIGHWAY		
			<b>Invoice Total:</b>	<b>20.00</b>	<b>20.00</b>
			<b>Check Total:</b>	<b>20.00</b>	<b>20.00</b>
			<b>Vendor Total:</b>	<b>20.00</b>	<b>20.00</b>
78956	ESSENCE OIL CORP	1116 PARK VIEW LN ATHENS WI 54411			
02	C 12/02/22	ESSENCE OIL CORP			
		126741	1 NA US THRIVE HYD	22001887 66 1	397.37 397.37
			Cash: 22-701-00-11110-000-000-000-000-000		397.37 397.37
			TREASURER'S CASH/ HIGHWAY		
			<b>Invoice Total:</b>	<b>397.37</b>	<b>397.37</b>
			<b>Check Total:</b>	<b>397.37</b>	<b>397.37</b>
			<b>Vendor Total:</b>	<b>397.37</b>	<b>397.37</b>
		126741	1 NA US THRIVE HYD	22001887 67 1	397.38 397.38
			Cash: 22-701-00-11110-000-000-000-000-000		397.38 397.38
			TREASURER'S CASH/ HIGHWAY		
			<b>Invoice Total:</b>	<b>397.38</b>	<b>397.38</b>
			<b>Check Total:</b>	<b>794.75</b>	<b>794.75</b>
			<b>Vendor Total:</b>	<b>794.75</b>	<b>794.75</b>

Report Date 11/28/22 02:18 PM  
 For Batches 001887 -001887 , - , -  
 Payment Request Date 12/02/22

County of Eau Claire  
 Payment Request Edit

Page No 11  
 FPEDT01B

Vendor No	Vendor Name	Check No	Date To Pay	Mailing Name	Address	App. Status	Claim No	PO No	Line	Invoice No	Acc Ctl 1099	Description	Batch-Trans-Line	Asset Tag	Amount	Liquidated		
<b>489</b>	<b>FARRELL EQUIPMENT &amp; SUPPLY CO</b>																	
02	C 12/02/22			FARRELL EQUIPMENT AND SUPPLY CO INC	1510 N HASTINGS WAY EAU CLAIRE WI 54703													
				1299982					1	NA WET DIAMOND BLADE			22001887	68	1	819.99	819.99	
				22-701-31-53220-370-000-000-000-000	Cash: 22-701-00-11110-000-000-000-000-000											819.99	819.99	
				FIELD SMALL TOOLS/ ROADWAY SUPPLIES	TREASURER'S CASH/ HIGHWAY													
																<b>Invoice Total:</b>	<b>819.99</b>	<b>819.99</b>
																<b>Check Total:</b>	<b>819.99</b>	<b>819.99</b>
																<b>Vendor Total:</b>	<b>819.99</b>	<b>819.99</b>
<b>491</b>	<b>FASTENAL COMPANY</b>																	
02	C 12/02/22			FASTENAL COMPANY	PO BOX 1286 WINONA MN 559871286													
				WIEAU316939					1	NA PNKGWHISKER			22001887	69	1	250.29	250.29	
				22-701-31-53220-370-000-000-000-000	Cash: 22-701-00-11110-000-000-000-000-000											250.29	250.29	
				FIELD SMALL TOOLS/ ROADWAY SUPPLIES	TREASURER'S CASH/ HIGHWAY													
																<b>Invoice Total:</b>	<b>250.29</b>	<b>250.29</b>
				WIEAU316949					1	NA TSHIRT			22001887	70	1	216.80	216.80	
				22-701-31-53220-370-000-000-000-000	Cash: 22-701-00-11110-000-000-000-000-000											216.80	216.80	
				FIELD SMALL TOOLS/ ROADWAY SUPPLIES	TREASURER'S CASH/ HIGHWAY													
																<b>Invoice Total:</b>	<b>216.80</b>	<b>216.80</b>
				WIEAU317059					1	NA PARTS			22001887	71	1	19.09	19.09	
				22-701-00-16151-000-000-000-000-000	Cash: 22-701-00-11110-000-000-000-000-000											19.09	19.09	
				REPAIR PARTS-DIRECT CHARGE (CLRNG ACCT)	TREASURER'S CASH/ HIGHWAY													
																<b>Invoice Total:</b>	<b>19.09</b>	<b>19.09</b>
				WIEAU317059					1	NA PARTS			22001887	72	1	19.09	19.09	
				22-701-00-16151-000-000-000-000-000	Cash: 22-701-00-11110-000-000-000-000-000											19.09	19.09	
				REPAIR PARTS-DIRECT CHARGE (CLRNG ACCT)	TREASURER'S CASH/ HIGHWAY													
																<b>Invoice Total:</b>	<b>19.09</b>	<b>19.09</b>
				WIEAU317079					1	NA GLOVES/EYEWEAR/CLOTHING			22001887	73	1	531.08	531.08	
				22-701-31-53220-370-000-000-000-000	Cash: 22-701-00-11110-000-000-000-000-000											531.08	531.08	
				FIELD SMALL TOOLS/ ROADWAY SUPPLIES	TREASURER'S CASH/ HIGHWAY													
																<b>Invoice Total:</b>	<b>531.08</b>	<b>531.08</b>
				WIEAU317079					1	NA GLOVES/EYEWEAR/CLOTHING			22001887	74	1	161.35	161.35	
				22-701-31-53230-350-000-000-000-000	Cash: 22-701-00-11110-000-000-000-000-000											161.35	161.35	
				SHOP/ REPAIR & MAINT SUPPLIES	TREASURER'S CASH/ HIGHWAY													
																<b>Invoice Total:</b>	<b>161.35</b>	<b>161.35</b>
																<b>Check Total:</b>	<b>1,197.70</b>	<b>1,197.70</b>

Report Date 11/28/22 02:18 PM  
 For Batches 001887 -001887 , - , -  
 Payment Request Date 12/02/22

County of Eau Claire  
 Payment Request Edit

Page No 12  
 FPEDT01B

Vendor No	Vendor Name	Check No	Date To Pay	Mailing Name	Address	App. Status	Claim No	PO No	Line	Invoice No	Acc	Ctl	1099	Description	Batch-Trans-Line	Asset Tag	Amount	Liquidated	
<b>491</b>	<b>FASTENAL COMPANY</b>																		
<b>Vendor Total:</b>																	<b>1,197.70</b>	<b>1,197.70</b>	
<b>102520</b>	<b>FLEETPRIDE INC</b>																		
02	C 12/02/22	FLEETPRIDE INC			PO BOX 847118 DALLAS TX 752847118														
		103664222					1	NA	CABLE/CONTROL HEAD	22001887	75	1					147.18	147.18	
					Cash: 22-701-00-11110-000-000-000-000-000												147.18	147.18	
					REPAIR PARTS-DIRECT CHARGE (CLRNG ACCT)				TREASURER'S CASH/ HIGHWAY										
<b>Invoice Total:</b>																	<b>147.18</b>	<b>147.18</b>	
<b>Check Total:</b>																	<b>147.18</b>	<b>147.18</b>	
<b>Vendor Total:</b>																	<b>147.18</b>	<b>147.18</b>	
<b>5889</b>	<b>GRAINGER INC, WW</b>																		
02	C 12/02/22	WW GRAINGER INC			DEPT 848650669 PALATINE IL 600380001														
		9506063271					1	NA	PRESSURE GAUGE	22001887	76	1					38.80	38.80	
					Cash: 22-701-00-11110-000-000-000-000-000												38.80	38.80	
					REPAIR PARTS-DIRECT CHARGE (CLRNG ACCT)				TREASURER'S CASH/ HIGHWAY										
<b>Invoice Total:</b>																	<b>38.80</b>	<b>38.80</b>	
<b>Check Total:</b>																	<b>38.80</b>	<b>38.80</b>	
<b>Vendor Total:</b>																	<b>38.80</b>	<b>38.80</b>	
<b>1264</b>	<b>HAAS SONS INC</b>																		
02	C 12/02/22	HAAS SONS INC			203 E BIRCH THORP WI 54771														
		123895					1	NA	3/4 INCH PRIVATE RECYCLE	22001887	77	1					174.34	174.34	
					Cash: 22-701-00-11110-000-000-000-000-000												174.34	174.34	
					CTHS ROAD CONST/Roadway Supplies				TREASURER'S CASH/ HIGHWAY										
<b>Invoice Total:</b>																	<b>174.34</b>	<b>174.34</b>	
		123895					1	NA	3/4 INCH PRIVATE RECYCLE	22001887	78	1					133.83	133.83	
					Cash: 22-701-00-11110-000-000-000-000-000												133.83	133.83	
					CTHS MAINT/ ROADWAY SUPPLIES				TREASURER'S CASH/ HIGHWAY										
<b>Invoice Total:</b>																	<b>133.83</b>	<b>133.83</b>	
		128040					1	NA	3/4 INCH DENSE BASE	22001887	79	1					111.54	111.54	
					Cash: 22-701-00-11110-000-000-000-000-000												111.54	111.54	
					CTHS MAINT/ ROADWAY SUPPLIES				TREASURER'S CASH/ HIGHWAY										
<b>Invoice Total:</b>																	<b>111.54</b>	<b>111.54</b>	
		128040					1	NA	3/4 INCH DENSE BASE	22001887	80	1					7,565.25	7,565.25	
					Cash: 22-701-00-11110-000-000-000-000-000												7,565.25	7,565.25	
					CTHS ROAD CONST/Roadway Supplies				TREASURER'S CASH/ HIGHWAY										
<b>Invoice Total:</b>																	<b>7,565.25</b>	<b>7,565.25</b>	



Report Date 11/28/22 02:18 PM  
 For Batches 001887 -001887 , - , -  
 Payment Request Date 12/02/22

County of Eau Claire  
 Payment Request Edit

Vendor No	Vendor Name	Check No	Date To Pay	Mailing Name	Address	App. Status	Claim No	PO No	Line	Invoice No	Acc	Ctl	1099	Description	Batch-Trans-Line	Asset Tag	Amount	Liquidated	
162048	INTERCLEAN EQUIPMENT LLC	02	C 12/02/22	INTERCLEAN EQUIPMENT LLC	709 JAMES L HART PKWY YPSILANTI MI 48197														
				153374					1	NA	SALT TRUCK WASH			22001887	86	1	110,914.50	110,914.50	
				22-701-31-59999-370-000-000-000-000	Cash: 22-701-00-11110-000-000-000-000-000												110,914.50	110,914.50	
				NEW HWY FACILITY/ROADWAY SUPPLIES	TREASURER'S CASH/ HIGHWAY														
																	<b>Invoice Total:</b>	<b>110,914.50</b>	<b>110,914.50</b>
																	<b>Check Total:</b>	<b>110,914.50</b>	<b>110,914.50</b>
																	<b>Vendor Total:</b>	<b>110,914.50</b>	<b>110,914.50</b>
1549	JOHN DEERE FINANCIAL	02	C 12/02/22	FARM PLAN	PO BOX 4450 CAROL STREAM IL 601974450														
				2505403					1	NA	TC - WORM GEAR/SPRING/PUMP			22001887	87	1	62.51	62.51	
				22-701-00-16151-000-000-000-000-000	Cash: 22-701-00-11110-000-000-000-000-000												62.51	62.51	
				REPAIR PARTS-DIRECT CHARGE (CLRNG ACCT)	TREASURER'S CASH/ HIGHWAY														
																	<b>Invoice Total:</b>	<b>62.51</b>	<b>62.51</b>
																	<b>Check Total:</b>	<b>62.51</b>	<b>62.51</b>
																	<b>Vendor Total:</b>	<b>62.51</b>	<b>62.51</b>
35998	LARSON COMPANIES	02	C 12/02/22	LARSON COMPANIES	PO BOX 270710 MINNEAPOLIS MN 55427														
				5304284882					1	NA	REMAN AD/IP CARTRIDGE			22001887	88	1	136.63	136.63	
				22-701-00-16121-000-000-000-000-000	Cash: 22-701-00-11110-000-000-000-000-000												136.63	136.63	
				REPAIR PARTS	TREASURER'S CASH/ HIGHWAY														
																	<b>Invoice Total:</b>	<b>136.63</b>	<b>136.63</b>
				5304285100					1	NA	GROMMET			22001887	89	1	12.36	12.36	
				22-701-00-16121-000-000-000-000-000	Cash: 22-701-00-11110-000-000-000-000-000												12.36	12.36	
				REPAIR PARTS	TREASURER'S CASH/ HIGHWAY														
																	<b>Invoice Total:</b>	<b>12.36</b>	<b>12.36</b>
				5304285109					1	NA	ELEMENT FILTER AIR			22001887	90	1	35.80	35.80	
				22-701-00-16121-000-000-000-000-000	Cash: 22-701-00-11110-000-000-000-000-000												35.80	35.80	
				REPAIR PARTS	TREASURER'S CASH/ HIGHWAY														
																	<b>Invoice Total:</b>	<b>35.80</b>	<b>35.80</b>
				5304285441					1	NA	MINI SQUARE WORK LIGHT			22001887	91	1	168.44	168.44	
				22-701-00-16121-000-000-000-000-000	Cash: 22-701-00-11110-000-000-000-000-000												168.44	168.44	
				REPAIR PARTS	TREASURER'S CASH/ HIGHWAY														
																	<b>Invoice Total:</b>	<b>168.44</b>	<b>168.44</b>
				5304285444					1	NA	MINI SQUARE WORK LIGHT			22001887	92	1	84.22	84.22	



Report Date 11/28/22 02:18 PM  
 For Batches 001887 -001887 , - , -  
 Payment Request Date 12/02/22

County of Eau Claire  
 Payment Request Edit

Page No 16  
 FPEDT01B

Vendor No	Vendor Name	Check No	Date To Pay	Mailing Name	Address	App. Status	Claim No	PO No	Line	Invoice No	Acc	Ctl	1099	Description	Batch-Trans-Line	Asset Tag	Amount	Liquidated	
<b>13196</b>	<b>LF GEORGE INC</b>																		
<b>Vendor Total:</b>																	<b>590.01</b>	<b>590.01</b>	
<b>158518</b>	<b>MAC TOOLS</b>																		
02	C 12/02/22	MAC TOOLS			518 E 10TH AVE STANLEY WI 54768														
		38066												1 NA 5 FT FLT BODY RAM W/ADAPTER	22001887 99 1		668.00	668.00	
																	22-701-00-11110-000-000-000-000-000	668.00	668.00
																	SHOP/ REPAIR & MAINT SUPPLIES		
																	TREASURER'S CASH/ HIGHWAY		
		38488												1 NA 10 TON COLLISION REPAIR SET	22001887 100 1		592.00	592.00	
																	22-701-00-11110-000-000-000-000-000	592.00	592.00
																	SHOP/ REPAIR & MAINT SUPPLIES		
																	TREASURER'S CASH/ HIGHWAY		
																	<b>Invoice Total:</b>	<b>668.00</b>	<b>668.00</b>
																	<b>Check Total:</b>	<b>1,260.00</b>	<b>1,260.00</b>
																	<b>Vendor Total:</b>	<b>1,260.00</b>	<b>1,260.00</b>
<b>5264</b>	<b>MASON SHOE</b>																		
02	C 12/02/22	MASON COMPANIES INC			301 N BRIDGE ST CHIPPEWA FALLS WI 54729														
		135369392												1 NA BOOT VOUCHER PALECEK	22001887 101 1		100.00	100.00	
																	22-701-00-11110-000-000-000-000-000	100.00	100.00
																	FIELD SMALL TOOLS/ ROADWAY SUPPLIES		
																	TREASURER'S CASH/ HIGHWAY		
		135369393												1 NA BOOT VOUCHER PALECEK	22001887 102 1		100.00	100.00	
																	22-701-00-11110-000-000-000-000-000	100.00	100.00
																	FIELD SMALL TOOLS/ ROADWAY SUPPLIES		
																	TREASURER'S CASH/ HIGHWAY		
																	<b>Invoice Total:</b>	<b>100.00</b>	<b>100.00</b>
																	<b>Check Total:</b>	<b>200.00</b>	<b>200.00</b>
																	<b>Vendor Total:</b>	<b>200.00</b>	<b>200.00</b>
<b>56979</b>	<b>MID STATE TRUCK SERVICE INC</b>																		
02	C 12/02/22	MID STATE TRUCK SERVICE INC			PO BOX 1150 MARSHFIELD WI 54449														
		235610E												1 NA CONTROL	22001887 103 1		362.41	362.41	
																	22-701-00-11110-000-000-000-000-000	362.41	362.41
																	REPAIR PARTS-DIRECT CHARGE (CLRNG ACCT)		
																	TREASURER'S CASH/ HIGHWAY		
		235745E												1 NA VALVE	22001887 104 1		74.49	74.49	
																	22-701-00-11110-000-000-000-000-000	74.49	74.49
																	REPAIR PARTS-DIRECT CHARGE (CLRNG ACCT)		
																	TREASURER'S CASH/ HIGHWAY		
																	<b>Invoice Total:</b>	<b>362.41</b>	<b>362.41</b>
																	<b>Check Total:</b>	<b>74.49</b>	<b>74.49</b>
																	<b>Vendor Total:</b>	<b>74.49</b>	<b>74.49</b>



Report Date 11/28/22 02:18 PM  
 For Batches 001887 -001887 , - , -  
 Payment Request Date 12/02/22

County of Eau Claire  
 Payment Request Edit

Page No 17  
 FPEDT01B

Vendor No	Vendor Name	Check No	Date To Pay	Mailing Name	Address	App. Status	Claim No	PO No	Line	Invoice No	Acc	Ctl	1099	Description	Batch-Trans-Line	Asset Tag	Amount	Liquidated		
<b>56979</b>	<b>MID STATE TRUCK SERVICE INC</b>						02	C 12/02/22		MID STATE TRUCK SERVICE INC				PO BOX 1150 MARSHFIELD WI 54449						
					235806E				1	NA VALVE/CONNECT				22001887 105 1			40.81	40.81		
										Cash: 22-701-00-11110-000-000-000-000-000							40.81	40.81		
										REPAIR PARTS-DIRECT CHARGE (CLRNG ACCT)				TREASURER'S CASH/ HIGHWAY						
																		<b>Invoice Total:</b>	<b>40.81</b>	<b>40.81</b>
					235813E				1	NA VALVE				22001887 106 1			321.93	321.93		
										Cash: 22-701-00-11110-000-000-000-000-000							321.93	321.93		
										REPAIR PARTS-DIRECT CHARGE (CLRNG ACCT)				TREASURER'S CASH/ HIGHWAY						
																		<b>Invoice Total:</b>	<b>321.93</b>	<b>321.93</b>
					235863E				1	NA AIR DRY				22001887 107 1			559.02	559.02		
										Cash: 22-701-00-11110-000-000-000-000-000							559.02	559.02		
										REPAIR PARTS-DIRECT CHARGE (CLRNG ACCT)				TREASURER'S CASH/ HIGHWAY						
																		<b>Invoice Total:</b>	<b>559.02</b>	<b>559.02</b>
																		<b>Check Total:</b>	<b>1,358.66</b>	<b>1,358.66</b>
																		<b>Vendor Total:</b>	<b>1,358.66</b>	<b>1,358.66</b>
<b>56308</b>	<b>MISSISSIPPI WELDERS SUPPLY CO INC</b>						02	C 12/02/22		MISSISSIPPI WELDERS SUPPLY CO INC				PO BOX 1036 WINONA MN 559877036						
					3915240				1	NA XL PEARL PIG BLU SPNDX THIN				22001887 108 1			231.40	231.40		
										Cash: 22-701-00-11110-000-000-000-000-000							231.40	231.40		
										FIELD SMALL TOOLS/ ROADWAY SUPPLIES				TREASURER'S CASH/ HIGHWAY						
																		<b>Invoice Total:</b>	<b>231.40</b>	<b>231.40</b>
					3918958				1	NA DEERSKIN THINSULATE MECH GLOVE				22001887 109 1			202.74	202.74		
										Cash: 22-701-00-11110-000-000-000-000-000							202.74	202.74		
										FIELD SMALL TOOLS/ ROADWAY SUPPLIES				TREASURER'S CASH/ HIGHWAY						
																		<b>Invoice Total:</b>	<b>202.74</b>	<b>202.74</b>
																		<b>Check Total:</b>	<b>434.14</b>	<b>434.14</b>
																		<b>Vendor Total:</b>	<b>434.14</b>	<b>434.14</b>
<b>30171</b>	<b>MONARCH PAVING CO</b>						02	C 12/02/22		MONARCH PAVING COMPANY				768 US HIGHWAY 8 AMERY WI 54001						
					5500064650				1	NA BASE AGGREGATE CTH JJ/V				22001887 110 1			39,174.42	39,174.42		
										Cash: 22-701-00-11110-000-000-000-000-000							39,174.42	39,174.42		
										CTHS ROAD CONST/Roadway Supplies				TREASURER'S CASH/ HIGHWAY						
																		<b>Invoice Total:</b>	<b>39,174.42</b>	<b>39,174.42</b>
					5500064650				1	NA BASE AGGREGATE CTH JJ/V				22001887 111 1			41,625.00	41,625.00		

Report Date 11/28/22 02:18 PM  
 For Batches 001887 -001887 , - , -  
 Payment Request Date 12/02/22

County of Eau Claire  
 Payment Request Edit

Page No 18  
 FPEDT01B

Vendor No	Vendor Name	Address	App. Status	Amount	Liquidated
Check No	Date To Pay	Mailing Name			
Claim No	PO No	Line Invoice No	Acc Ctl 1099 Description	Batch-Trans-Line Asset Tag	
<b>30171</b>	<b>MONARCH PAVING CO</b>				
02	C 12/02/22	MONARCH PAVING COMPANY	768 US HIGHWAY 8 AMERY WI 54001		
		5500064650	1 NA BASE AGGREGATE CTH JJ/V	22001887 111 1	41,625.00 41,625.00
			Cash: 22-701-00-11110-000-000-000-000-000		41,625.00 41,625.00
			CTHS ROAD CONST/Roadway Supplies	TREASURER'S CASH/ HIGHWAY	
				<b>Invoice Total:</b>	<b>41,625.00 41,625.00</b>
		5500064651	1 NA CTH G RECONDITIONING	22001887 112 1	88,790.30 88,790.30
			Cash: 22-701-00-11110-000-000-000-000-000		88,790.30 88,790.30
			CTHS ROAD CONST/Roadway Supplies	TREASURER'S CASH/ HIGHWAY	
				<b>Invoice Total:</b>	<b>88,790.30 88,790.30</b>
		5500064655	1 NA CTH JJ PROJECT SUPPLIES	22001887 113 1	103,427.74 103,427.74
			Cash: 22-701-00-11110-000-000-000-000-000		103,427.74 103,427.74
			CTHS ROAD CONST/Roadway Supplies	TREASURER'S CASH/ HIGHWAY	
				<b>Invoice Total:</b>	<b>103,427.74 103,427.74</b>
		5500064656	1 NA CTH F PROJECT SUPPLIES	22001887 114 1	40,007.48 40,007.48
			Cash: 22-701-00-11110-000-000-000-000-000		40,007.48 40,007.48
			CTHS ROAD CONST/Roadway Supplies	TREASURER'S CASH/ HIGHWAY	
				<b>Invoice Total:</b>	<b>40,007.48 40,007.48</b>
		5500064738	1 NA CTH F PROJECT MATERIALS	22001887 115 1	12,774.45 12,774.45
			Cash: 22-701-00-11110-000-000-000-000-000		12,774.45 12,774.45
			CTHS ROAD CONST/Roadway Supplies	TREASURER'S CASH/ HIGHWAY	
				<b>Invoice Total:</b>	<b>12,774.45 12,774.45</b>
				<b>Check Total:</b>	<b>325,799.39 325,799.39</b>
				<b>Vendor Total:</b>	<b>325,799.39 325,799.39</b>
<b>19798</b>	<b>NEI ELECTRIC INC</b>				
02	C 12/02/22	NEI ELECTRIC INC	4815 WHITE BEAR PKWY WHITE BEAR LAKE MN 55110		
		142366	1 NA REPAIR LIGHT OUT	22001887 116 1	324.32 324.32
			Cash: 22-701-00-11110-000-000-000-000-000		324.32 324.32
			CTHS MAINT/ ROADWAY SUPPLIES	TREASURER'S CASH/ HIGHWAY	
				<b>Invoice Total:</b>	<b>324.32 324.32</b>
				<b>Check Total:</b>	<b>324.32 324.32</b>
				<b>Vendor Total:</b>	<b>324.32 324.32</b>
<b>88145</b>	<b>NUSS TRUCK &amp; EQUIPMENT</b>				
02	C 12/02/22	NUSS TRUCK & EQUIPMENT	PO BOX 6699 ROCHESTER MN 55903		
		5307528P	1 NA SEALING RING/RUBBER WASHER	22001887 119 1	82.57 82.57

Report Date 11/28/22 02:18 PM  
 For Batches 001887 - 001887 , - , -  
 Payment Request Date 12/02/22

**County of Eau Claire**  
 Payment Request Edit

Vendor No	Vendor Name			Address			App. Status		
Check No	Date To Pay	Mailing Name						Amount	Liquidated
Claim No	PO No	Line Invoice No	Acc	Ctl 1099	Description	Batch-Trans-Line	Asset Tag		
<b>88145</b>	<b>NUSS TRUCK &amp; EQUIPMENT</b>								
02	C 12/02/22	NUSS TRUCK & EQUIPMENT			PO BOX 6699 ROCHESTER MN 55903				
		5307528P	1	NA	SEALING RING/RUBBER WASHER	22001887 119 1		82.57	82.57
					Cash: 22-701-00-11110-000-000-000-000-000			82.57	82.57
		REPAIR PARTS-DIRECT CHARGE (CLRNG ACCT)			TREASURER'S CASH/ HIGHWAY				
					<b>Invoice Total:</b>			<b>82.57</b>	<b>82.57</b>
		5307586P	1	NA	MACK GU GR	22001887 120 1		260.00	260.00
					Cash: 22-701-00-11110-000-000-000-000-000			260.00	260.00
		REPAIR PARTS-DIRECT CHARGE (CLRNG ACCT)			TREASURER'S CASH/ HIGHWAY				
					<b>Invoice Total:</b>			<b>260.00</b>	<b>260.00</b>
		5307635P	1	NA	BRACKET	22001887 121 1		35.37	35.37
					Cash: 22-701-00-11110-000-000-000-000-000			35.37	35.37
		REPAIR PARTS-DIRECT CHARGE (CLRNG ACCT)			TREASURER'S CASH/ HIGHWAY				
					<b>Invoice Total:</b>			<b>35.37</b>	<b>35.37</b>
		5307635P	1	NA	BRACKET	22001887 122 1		35.38	35.38
					Cash: 22-701-00-11110-000-000-000-000-000			35.38	35.38
		REPAIR PARTS-DIRECT CHARGE (CLRNG ACCT)			TREASURER'S CASH/ HIGHWAY				
					<b>Invoice Total:</b>			<b>35.38</b>	<b>35.38</b>
		5307641P	1	NA	FREIGHT	22001887 123 1		950.30	950.30
					Cash: 22-701-00-11110-000-000-000-000-000			950.30	950.30
		REPAIR PARTS-DIRECT CHARGE (CLRNG ACCT)			TREASURER'S CASH/ HIGHWAY				
					<b>Invoice Total:</b>			<b>950.30</b>	<b>950.30</b>
		5307643P	1	NA	BRACKET	22001887 124 1		12.90	12.90
					Cash: 22-701-00-11110-000-000-000-000-000			12.90	12.90
		REPAIR PARTS-DIRECT CHARGE (CLRNG ACCT)			TREASURER'S CASH/ HIGHWAY				
					<b>Invoice Total:</b>			<b>12.90</b>	<b>12.90</b>
		5307643P	1	NA	BRACKET	22001887 125 1		12.90	12.90
					Cash: 22-701-00-11110-000-000-000-000-000			12.90	12.90
		REPAIR PARTS-DIRECT CHARGE (CLRNG ACCT)			TREASURER'S CASH/ HIGHWAY				
					<b>Invoice Total:</b>			<b>12.90</b>	<b>12.90</b>
		5307776P	1	NA	BRACKET	22001887 126 1		70.75	70.75
					Cash: 22-701-00-11110-000-000-000-000-000			70.75	70.75
		REPAIR PARTS-DIRECT CHARGE (CLRNG ACCT)			TREASURER'S CASH/ HIGHWAY				
					<b>Invoice Total:</b>			<b>70.75</b>	<b>70.75</b>



Report Date 11/28/22 02:18 PM  
 For Batches 001887 -001887 , - , -  
 Payment Request Date 12/02/22

County of Eau Claire  
 Payment Request Edit

Vendor No	Vendor Name	Check No	Date To Pay	Mailing Name	Address	App. Status	Claim No	PO No	Line	Invoice No	Acc	Ctl	1099	Description	Batch-Trans-Line	Asset Tag	Amount	Liquidated	
<b>89133</b>	<b>RIVER COUNTRY COOPERATIVE</b>																		
02	C 12/02/22	RIVER COUNTRY COOPERATIVE			1080 W RIVER ST CHIPPEWA FALLS WI 54729														
		512435												1 NA GRASS MIX	22001887 130 1		403.50	403.50	
		22-701-31-53310-370-000-000-000-000			Cash: 22-701-00-11110-000-000-000-000-000												403.50	403.50	
		CTHS MAINT/ ROADWAY SUPPLIES			TREASURER'S CASH/ HIGHWAY														
																	<b>Invoice Total:</b>	<b>403.50</b>	<b>403.50</b>
																	<b>Check Total:</b>	<b>403.50</b>	<b>403.50</b>
																	<b>Vendor Total:</b>	<b>403.50</b>	<b>403.50</b>
<b>4036</b>	<b>RIVER STATES TRUCK &amp; TRAILER INC</b>																		
02	C 12/02/22	RIVER STATES TRUCK & TRAILER INC			ACCOUNTING DEPT3959 N KINNEY COULEE RD LACROSSE WI 54601														
		222425												1 NA REPAIR AND PARTS	22001887 131 1		2,490.65	2,490.65	
		22-701-00-16161-000-000-000-000-000			Cash: 22-701-00-11110-000-000-000-000-000												2,490.65	2,490.65	
		REPAIR PARTS-EXTERNAL LABOR(CLRNG ACCT)			TREASURER'S CASH/ HIGHWAY														
																	<b>Invoice Total:</b>	<b>2,490.65</b>	<b>2,490.65</b>
		222425												1 NA REPAIR AND PARTS	22001887 132 1		4,421.16	4,421.16	
		22-701-00-16171-000-000-000-000-000			Cash: 22-701-00-11110-000-000-000-000-000												4,421.16	4,421.16	
		REPAIR PARTS-EXTERNAL PARTS/OTHER(CLRNG)			TREASURER'S CASH/ HIGHWAY														
																	<b>Invoice Total:</b>	<b>4,421.16</b>	<b>4,421.16</b>
		2584082												1 NA HOSE	22001887 133 1		29.58	29.58	
		22-701-00-16151-000-000-000-000-000			Cash: 22-701-00-11110-000-000-000-000-000												29.58	29.58	
		REPAIR PARTS-DIRECT CHARGE (CLRNG ACCT)			TREASURER'S CASH/ HIGHWAY														
																	<b>Invoice Total:</b>	<b>29.58</b>	<b>29.58</b>
																	<b>Check Total:</b>	<b>6,941.39</b>	<b>6,941.39</b>
																	<b>Vendor Total:</b>	<b>6,941.39</b>	<b>6,941.39</b>
<b>3042</b>	<b>RONCO ENGINEERING SALES CO INC</b>																		
02	C 12/02/22	RONCO ENGINEERING SALES INC			PO BOX 8891755 RONCO AVE WINONA MN 559870889														
		3304083												1 NA TUBE UNION	22001887 134 1		8.50	8.50	
		22-701-00-16151-000-000-000-000-000			Cash: 22-701-00-11110-000-000-000-000-000												8.50	8.50	
		REPAIR PARTS-DIRECT CHARGE (CLRNG ACCT)			TREASURER'S CASH/ HIGHWAY														
																	<b>Invoice Total:</b>	<b>8.50</b>	<b>8.50</b>
																	<b>Check Total:</b>	<b>8.50</b>	<b>8.50</b>
																	<b>Vendor Total:</b>	<b>8.50</b>	<b>8.50</b>
<b>3537</b>	<b>SHORT ELLIOTT HENDRICKSON INC</b>																		
02	C 12/02/22	SHORT ELLIOTT HENDRICKSON INC			PO BOX 64780 ST PAUL MN 551640780														
		436053												1 NA CTH CC PROJECT	22001887 135 1		10,106.94	10,106.94	

Report Date 11/28/22 02:18 PM  
 For Batches 001887 -001887 , - , -  
 Payment Request Date 12/02/22

County of Eau Claire  
 Payment Request Edit

Page No 22  
 FPEDT01B

Vendor No	Vendor Name	Address	App. Status						
Check No	Date To Pay	Mailing Name							
Claim No	PO No	Line Invoice No	Acc Ctl 1099	Description	Batch-Trans-Line	Asset Tag	Amount	Liquidated	
<b>3537</b>	<b>SHORT ELLIOTT HENDRICKSON INC</b>								
02	C 12/02/22	SHORT ELLIOTT HENDRICKSON INC		PO BOX 64780 ST PAUL MN 551640780					
		436053	1 NA	CTH CC PROJECT	22001887 135 1		10,106.94	10,106.94	
				Cash: 22-701-00-11110-000-000-000-000-000			10,106.94	10,106.94	
				CTHS ROAD CONST/Roadway Supplies					
				TREASURER'S CASH/ HIGHWAY					
							<b>Invoice Total:</b>	<b>10,106.94</b>	<b>10,106.94</b>
		436691	1 NA	CTH F PROJECT	22001887 136 1		649.46	649.46	
				Cash: 22-701-00-11110-000-000-000-000-000			649.46	649.46	
				CTHS ROAD CONST/Roadway Supplies					
				TREASURER'S CASH/ HIGHWAY					
							<b>Invoice Total:</b>	<b>649.46</b>	<b>649.46</b>
							<b>Check Total:</b>	<b>10,756.40</b>	<b>10,756.40</b>
							<b>Vendor Total:</b>	<b>10,756.40</b>	<b>10,756.40</b>
<b>161239</b>	<b>SNAP ON CREDIT LLC</b>								
02	C 12/02/22	SNAP ON CREDIT LLC		950 TECHNOLOGY WAY STE 301 LIBERTYVILLE IL 60048					
		129935425-111122	1 NA	ETHOS EDGE SUBSCRPTION	22001887 137 1		38.92	38.92	
				Cash: 22-701-00-11110-000-000-000-000-000			38.92	38.92	
				SHOP/ REPAIR & MAINT SUPPLIES					
				TREASURER'S CASH/ HIGHWAY					
							<b>Invoice Total:</b>	<b>38.92</b>	<b>38.92</b>
							<b>Check Total:</b>	<b>38.92</b>	<b>38.92</b>
							<b>Vendor Total:</b>	<b>38.92</b>	<b>38.92</b>
<b>130486</b>	<b>SPILEDE, BRIAN</b>								
02	C 12/02/22	BRIAN SPILDE		4107 145TH ST CHIPPEWA FALLS WI 54729					
		130486-102022	1 NA	MEAL REIMBURSEMENT OCT 2022	22001887 138 1		20.00	20.00	
				Cash: 22-701-00-11110-000-000-000-000-000			20.00	20.00	
				ADMIN/TRAVEL-TRNG & CONF					
				TREASURER'S CASH/ HIGHWAY					
							<b>Invoice Total:</b>	<b>20.00</b>	<b>20.00</b>
							<b>Check Total:</b>	<b>20.00</b>	<b>20.00</b>
							<b>Vendor Total:</b>	<b>20.00</b>	<b>20.00</b>
<b>121</b>	<b>STATE OF WISCONSIN</b>								
02	C 12/02/22	STATE OF WISCONSIN		REGISTRATION FEE TRUSTWI DEPT OF TRANSPORTATIONPO BOX 7911 MADISON WI 537077911					
		121-111422	1 NA	TRAILER LICENSE PLATE FEE	22001887 139 1		169.50	169.50	
				Cash: 22-701-00-11110-000-000-000-000-000			169.50	169.50	
				REPAIR PARTS-DIRECT CHARGE (CLRNG ACCT)					
				TREASURER'S CASH/ HIGHWAY					
							<b>Invoice Total:</b>	<b>169.50</b>	<b>169.50</b>
							<b>Check Total:</b>	<b>169.50</b>	<b>169.50</b>
							<b>Vendor Total:</b>	<b>169.50</b>	<b>169.50</b>

Report Date 11/28/22 02:18 PM  
 For Batches 001887 - 001887 , - , -  
 Payment Request Date 12/02/22

**County of Eau Claire**  
 Payment Request Edit

Page No 23  
 FPEDT01B

Vendor No	Vendor Name	Address	App. Status	Amount	Liquidated
Check No	Date To Pay	Mailing Name			
Claim No	PO No	Line Invoice No	Acc Ctl 1099 Description	Batch-Trans-Line Asset Tag	
<b>128406</b>	<b>STENSEN TRANSPORT LLC</b>				
02	C 12/02/22	STENSEN TRANSPORT LLC	E14125 COUNTY RD VV AUGUSTA WI 54722		
		102	1 NA SHOULDER CTH V AND O	22001887 140 1	517.50 517.50
22-701-31-53312-370-000-000-000-000			Cash: 22-701-00-11110-000-000-000-000-000		517.50 517.50
CTHS ROAD CONST/Roadway Supplies			TREASURER'S CASH/ HIGHWAY		
		102	1 NA SHOULDER CTH V AND O	22001887 141 1	517.50 517.50
22-701-31-53312-370-000-000-000-000			Cash: 22-701-00-11110-000-000-000-000-000		517.50 517.50
CTHS ROAD CONST/Roadway Supplies			TREASURER'S CASH/ HIGHWAY		
			<b>Invoice Total:</b>		<b>517.50 517.50</b>
			<b>Check Total:</b>		<b>1,035.00 1,035.00</b>
			<b>Vendor Total:</b>		<b>1,035.00 1,035.00</b>
<b>7495</b>	<b>UNIVERSAL TRUCK EQUIPMENT</b>				
02	C 12/02/22	UNIVERSAL TRUCK EQUIPMENT	N 15921 SCHUBERT ROAD GALESVILLE WI 54630		
		58785	1 NA TRUNION PLATE	22001887 142 1	350.55 350.55
22-701-00-16121-000-000-000-000-000			Cash: 22-701-00-11110-000-000-000-000-000		350.55 350.55
REPAIR PARTS			TREASURER'S CASH/ HIGHWAY		
			<b>Invoice Total:</b>		<b>350.55 350.55</b>
			<b>Check Total:</b>		<b>350.55 350.55</b>
			<b>Vendor Total:</b>		<b>350.55 350.55</b>
<b>117056</b>	<b>WANCO INC</b>				
02	C 12/02/22	WANCO INC	DEPT 0829 DENVER CO 80256		
		FMI-0001306	1 NA SUBSCR FOR MSG BOARD DATA	22001887 143 1	120.00 120.00
22-701-00-16171-000-000-000-000-000			Cash: 22-701-00-11110-000-000-000-000-000		120.00 120.00
REPAIR PARTS-EXTERNAL PARTS/OTHER(CLRNG)			TREASURER'S CASH/ HIGHWAY		
		FMI-0001306	1 NA SUBSCR FOR MSG BOARD DATA	22001887 144 1	120.00 120.00
22-701-00-16171-000-000-000-000-000			Cash: 22-701-00-11110-000-000-000-000-000		120.00 120.00
REPAIR PARTS-EXTERNAL PARTS/OTHER(CLRNG)			TREASURER'S CASH/ HIGHWAY		
			<b>Invoice Total:</b>		<b>120.00 120.00</b>
			<b>Check Total:</b>		<b>240.00 240.00</b>
			<b>Vendor Total:</b>		<b>240.00 240.00</b>

Report Date 11/28/22 02:18 PM  
For Batches 001887 -001887 , - , -  
Payment Request Date 12/02/22

County of Eau Claire  
Payment Request Edit

Page No 24  
FPEDT01B

Vendor No	Vendor Name				Address					App. Status
Check No	Date To Pay	Mailing Name								
Claim No	PO No	Line	Invoice No	Acc	Ctl 1099	Description	Batch-Trans-Line	Asset Tag	Amount	Liquidated
Total Manual Checks:							.00	<b>Total Liquidated:</b>		<b>720,636.35</b>
Total Computer Checks:							711,228.65			
Total ACH Checks:							.00			
Total Electronic Checks:							.00			
Total Other Checks:							.00			
Total Unposted Payment Requests:							711,228.65			
Total Posted Payment Requests:							.00			
Grand Total:							711,228.65			
Estimated No. of Checks:							44			

Fund:	Amount	Liquidated
701	711,228.65	720,636.35
<b>Total of all Funds:</b>	<b>711,228.65</b>	<b>720,636.35</b>

<u>Bank No</u>	<u>Bank Total</u>
02	711,228.65



Report Date 11/28/22 02:18 PM  
For Batches 001887 - 001887 , - , -  
Payment Request Date 12/02/22

County of Eau Claire  
Payment Request Edit

Page No 25  
FPEDT01B

---

Vendor No	Vendor Name								
Check No	Date To Pay	Mailing Name		Address			App. Status		
Claim No	PO No	Line	Invoice No	Acc Ctl 1099	Description	Batch-Trans-Line	Asset Tag	Amount	Liquidated

Note: The following Payment Vendors are not the same as the PO Vendors.

Check Key	PO No	Payment Vendor	PO Vendor	Batch\Y\N	Trans Line
-----------	-------	----------------	-----------	-----------	------------

Note: The following errors have been recorded.

Report Date 11/28/22 02:18 PM  
For Batches ALL -  
Payment Request Date 12/02/22

County of Eau Claire  
Payment Request Edit

Page No 26  
FPEDT01B

---

The following are checks with negative amounts:

<u>Check Key</u>	<u>Payment Date</u>	<u>Payment Amount</u>	<u>Vendor</u>
------------------	---------------------	-----------------------	---------------