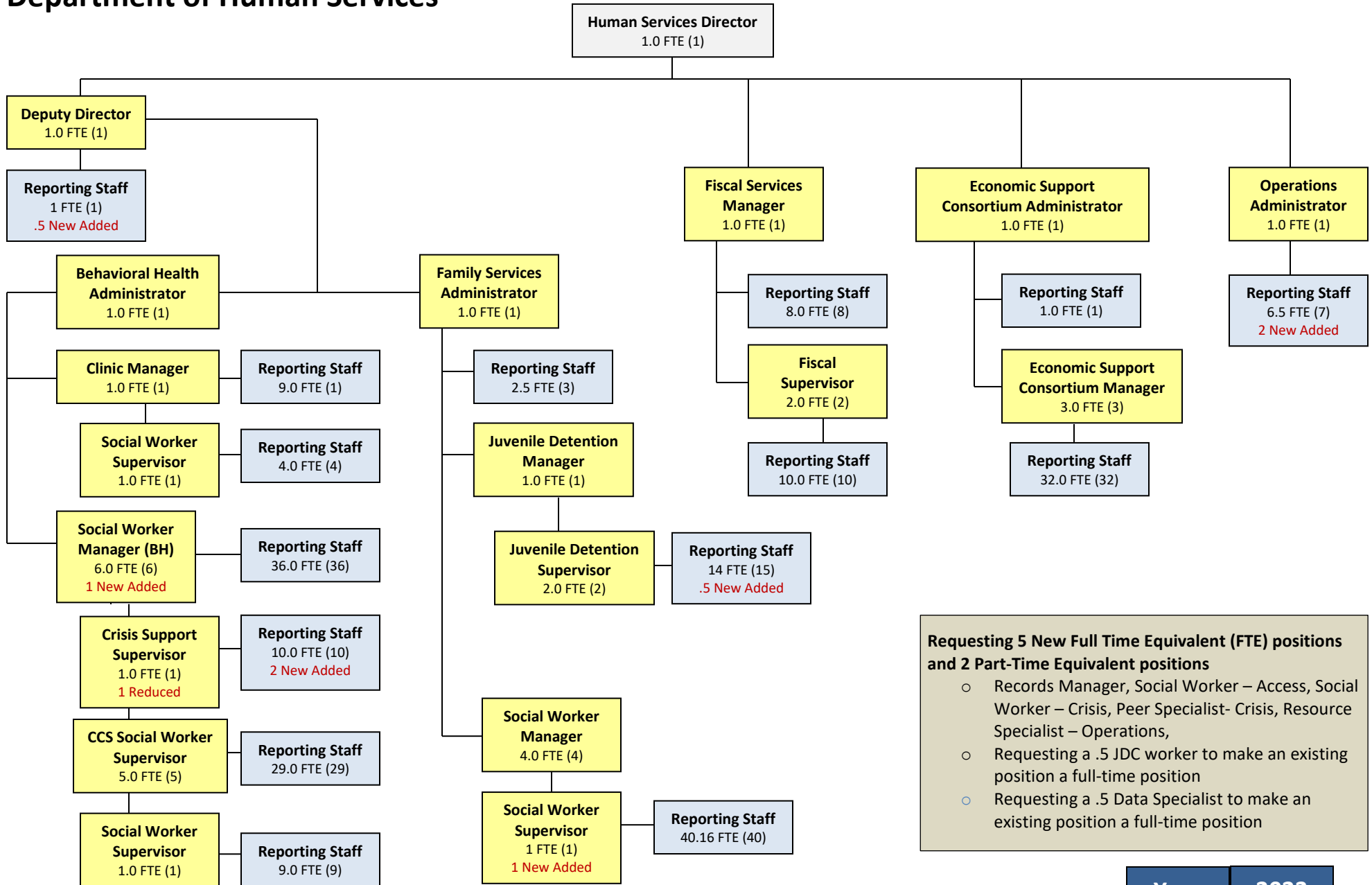


# Department of Human Services



**Requesting 5 New Full Time Equivalent (FTE) positions and 2 Part-Time Equivalent positions**

- Records Manager, Social Worker – Access, Social Worker – Crisis, Peer Specialist- Crisis, Resource Specialist – Operations,
- Requesting a .5 JDC worker to make an existing position a full-time position
- Requesting a .5 Data Specialist to make an existing position a full-time position

Year	2023
FTE	247.16