

CHIPPEWA-EAU CLAIRE METROPOLITAN PLANNING ORGANIZATION

Annual Liaison Report

January 1, 2021 to December 31, 2021

Jim Dunning, Eau Claire County Representative

Zoe Roberts, Eau Claire County Representative

The Chippewa-Eau Claire Metropolitan Planning Organization (MPO)(Council) met four times during 2021. During 2021, the following actions or discussions were held.

1. Resolution 21-01: Adoption of Amendment #9 (Project Changes) to the Transportation Improvement Program for the Eau Claire Urbanized Area, 2020-2024 was reviewed and approved.
2. A public hearing was held for the Chippewa-Eau Claire MPO Long Range Transportation Plan for 2020-2045 was reviewed and approved.
3. Resolution 21-02: Adoption of the Chippewa-Eau Claire MPO Long Range Transportation Plan was reviewed and approved. Crash data for the proposed plan were discussed.
4. A list of projects the MPO will engage in for 2021 was presented.
5. Resolution 21-03: Adoption of Amendment #10 (Project Changes) to the Transportation Improvement Program for the Eau Claire Urbanized Area, 2020-2024 was reviewed and approved.
6. Resolution 21-04: Adoption of Amendment #11 (Transit Asset Management Targets) to the Transportation Improvement Program for the Eau Claire Urbanized Area, 2020-2024 was reviewed and approved. The amendment was needed to align policy with a recent change in the WisDOT policy correcting a typographical error.
7. A summary of the community outreach efforts that MPO staff have been making in the cities, villages, towns, and the airport to educate the public about MPO activities and resources was presented.
8. Resolution 21-05: Adoption of Amendment #12 (Eau Claire Transit Safety Performance Matrix) to the Transportation Improvement Program for the Eau Claire Urbanized Area, 2020-2024 was reviewed and approved.
9. Resolution 21-06: Adoption of Amendment #12 (Addition or Modification of Seven Highway projects) to the Transportation Improvement Program for the Eau Claire Urbanized Area, 2020-2024 was reviewed and approved. The amendment was made up of updates from WisDOT on six highway projects within the area covered by the MPO and the addition of a railroad crossing improvement project in the Town of Lafayette.
10. A recommendation of the MPO Technical Advisory Committee to Award Surface Transportation Block Grant (STBG) funds of \$357,040 to Chippewa County for rehabilitation of a segment of County Trunk Highway J. The recommendation was approved.

11. The 2022 MPO Work program and transportation projects for 2022 were discussed. MPO members were encouraged to work with their staff to identify projects that the MPO could assist with in 2022.

12. The proposed 2022-2026 Transportation Improvement Program (TIP) for the Eau Claire Urban Area was presented, reviewed and approved.

13. The proposed 2022 Transportation Planning Work Program for the Eau Claire Urban Area was presented, reviewed and approved.

14. A review of the increased crashes with fatalities on Clairemont Ave/State Hwy 12 was held. Discussion of causes included speeding, traffic volume, roadway characteristics, and residential construction. Significant housing growth west of Clairemont and south of Hwy 12 in Altoona were noted. A crash ranking will be conducted.

CHIPPEWA - EAU CLAIRE METROPOLITAN PLANNING ORGANIZATION



2021 SUMMARY REPORT



Over the years, the Chippewa-Eau Claire MPO has been a partner in transportation related planning activities in the urban area. This photo is from the 2019 Annual MPO Statewide Conference, which the MPO hosted in downtown Eau Claire. The cover photo and photo to the right are from CTH T public meetings in summer 2021.

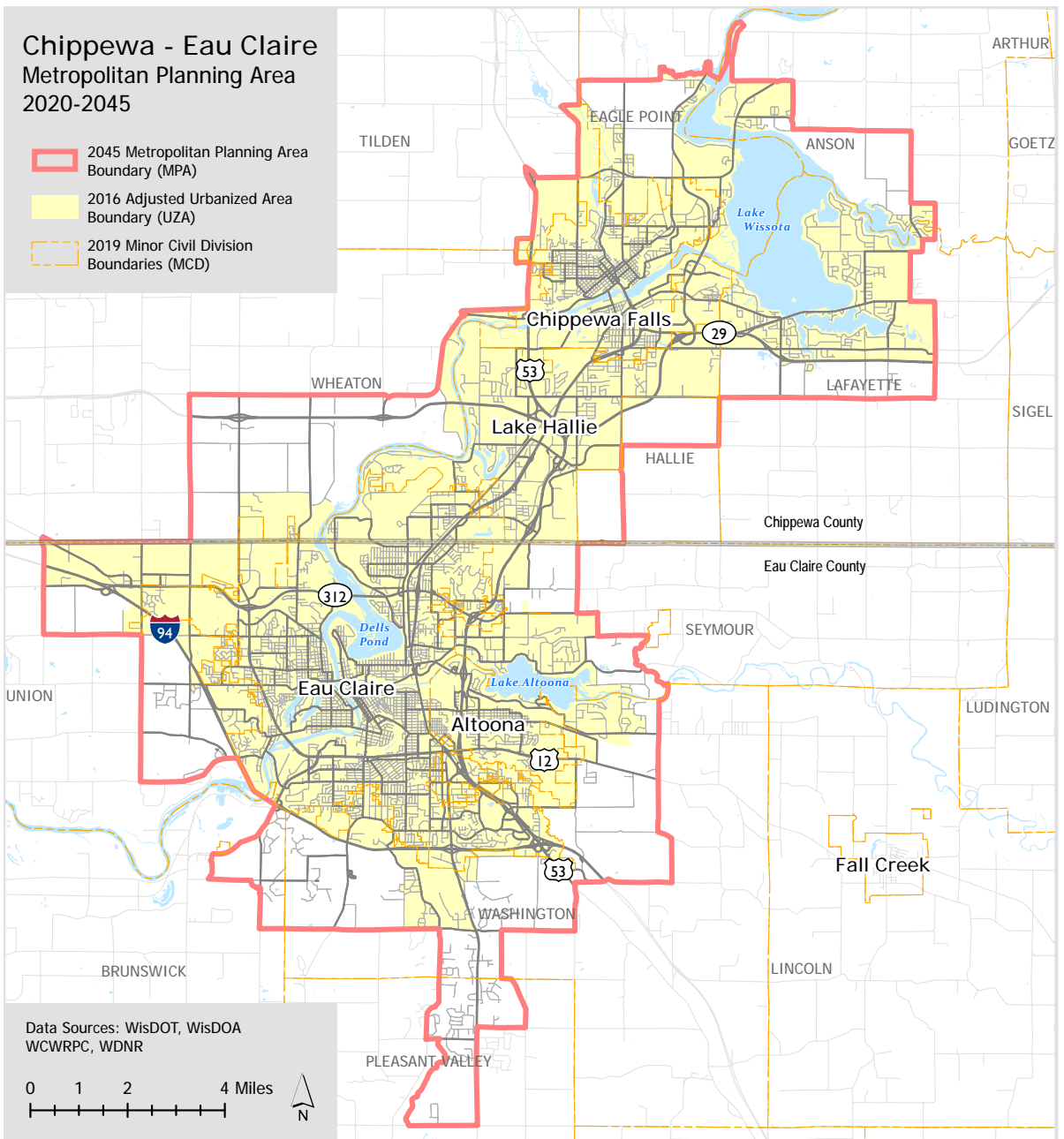


Chippewa-Eau Claire MPO

The Chippewa-Eau Claire Metropolitan Planning Organization (MPO) was formally established in 1982 to work on transportation related activities in the Chippewa-Eau Claire metropolitan area. The MPO provides a forum that allows elected officials, professional transportation staff, and citizens to jointly plan the future transportation system of the urban area. The MPO is housed and staffed by the West Central Wisconsin Regional Planning Commission (WCWRPC).

The MPO covers the areas of the cities of Altoona, Chippewa Falls, and Eau Claire; the Village of Lake Hallie; and portions of the towns of Anson, Eagle Point, Hallie, Lafayette, Tilden and Wheaton in Chippewa County, and Brunswick, Pleasant Valley, Seymour, Union, and Washington in Eau Claire County. The Metropolitan Planning Area (MPA) is approximately 163 square miles and has a current population of around 120,000. The map to the right shows the MPA and how much of each community is located in the MPA. All the cities and villages in the MPO are located in the MPA and each town is partially in the MPA.

The area covered by the MPA is a regional hub for employment, health care, and commercial shopping. That can be seen with roughly half the work force in the MPA commuting from outside the MPA. There are a total of 14 MPOs in the State. Of the 14, the Chippewa-Eau Claire MPO has the 7th largest population and is the 8th largest area geographically.



MPO Structure

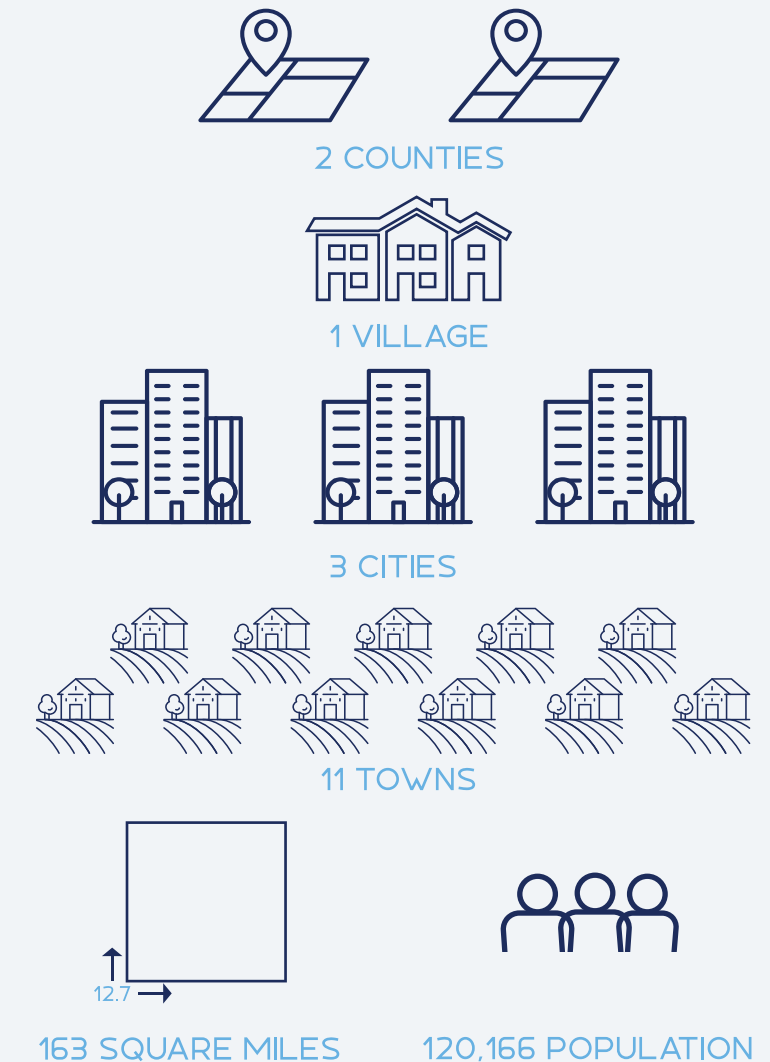
The MPO is made up of a Policy Council which has a representative from each city, village, town, and the two counties in the MPO. These representatives are elected officials from each governing body that are appointed to the MPO Policy Council. The Policy Council meets four times a year and formally approves the work programs, Long Range Transportation Plan, Transportation Improvement Plan (TIP), all TIP amendments, and a host of other actions.

The MPO also has a Technical Advisory Committee (TAC). The TAC is attended by transportation, planning, and natural resource professionals from governing bodies in the MPA. The vast majority of items that are presented to the Policy Council are first presented to the TAC for their review and recommendation. As with the Policy Council, the TAC meets four times a year.

The three major action items for the MPO are the Long Range Transportation Plan, Work Program, and TIP. All three are reviewed by the TAC and approved by the Policy Council.

The Long Range Transportation Plan is required to have a minimum 20-year horizon and needs to be updated at least every five years. By analyzing and evaluating existing conditions in the MPA, recommendations can be made to support the maintenance and development of the transportation system. The Work Program provides direction and substance for pursuing a unified urban transportation planning work effort in the MPA. It also lists the work items that MPO staff will work on in that calendar year. The TIP consolidates, in one report, a listing of all programmed highway, transit, bicycle/pedestrian, and other transportation projects which may be implemented with federal funds, those that are regionally significant, and/or represent identified priority needs over a five-year period. If projects that are federally funded are not listed in the TIP, the projects cannot commence.

Chippewa-Eau Claire MPO



Staff

There were several MPO staff changes in late 2020 and in 2021. In February 2021, Ann Schell, who had been the MPO Director since 2007, retired. Eric Anderson, who has worked at the WCWRPC since 2007 and worked in the MPO for four years, replaced Ann as the MPO Director.

In November 2020, Edwin Rothrock was hired as an Associate Planner. Edwin currently works on transit projects and programs for the WCWRPC, including administering the Chippewa Falls Shared Ride Taxi program. In addition, he worked on the Eau Claire Bicycle and Pedestrian Detailed Study Report, Altoona Bicycle and Pedestrian and Safe Routes To Parks Plan, and Chippewa Falls Wayfinding Plan.

In the summer of 2021, Hailee Bushman was hired. Hailee has also worked on the Altoona Bicycle and Pedestrian and Safe Routes To Parks Plan, sidewalk location maps, and has done additional mapping for the MPO.

Michael Mills was also hired in summer 2021. Michael worked primarily on MPO projects in 2021 and has worked on the Eau Claire Bicycle and Pedestrian Detailed Study Report, Altoona Bicycle and Pedestrian and Safe Routes To Parks Plan, Capital Improvement Plan story maps for Chippewa County and the City of Chippewa Falls, and the Chippewa Falls Wayfinding Plan.

In addition to the wide variety of planning projects, staff continues to help and work with several groups in the MPA. These include Center for Independent Living of Western Wisconsin, local and regional passenger rail groups, and Eau Claire County Healthy Communities.



Eric Anderson
Senior Planner/MPO Director
eanderson@wcrpc.org
Ext. 18



Edwin Rothrock
Associate Planner
erothrock@wcrpc.org
Ext. 25



Hailee Bushman
Assistant Planner
SRTS Coordinator
hbushman@wcrpc.org
Ext. 22



Michael Mills
Assistant Planner
mmills@wcrpc.org
Ext. 23

Ongoing Projects

The MPO works on a wide variety of transportation projects for government entities in the MPA. The majority of the work in the MPO is funded through Federal Highway Administration and matched by Wisconsin Department of Transportation and the WCWRPC. MPO staff works to have conversations with the units of government in the MPA related to ongoing and possible future projects.

Starting with the Long Range Transportation Plan, Transportation Improvement Plan (TIP), and Urban Work Program, the following pages give brief highlights of some of the projects that WCWRPC staff worked on in 2021.



Long Range Transportation Plan

Started: Fall 2019
Completed: February 2022

Every five years, MPO staff completes a Long Range Transportation Plan (LRTP) update for the MPA. The 2021 plan update included a more comprehensive and detailed public participation survey than in the past and included new mapping tools that helped analyze issues and opportunities in the MPA. The new mapping tools show the highest concentration of types of crashes and severity of crashes in the MPA. These mapping techniques can help determine which areas have the highest need for improvement.

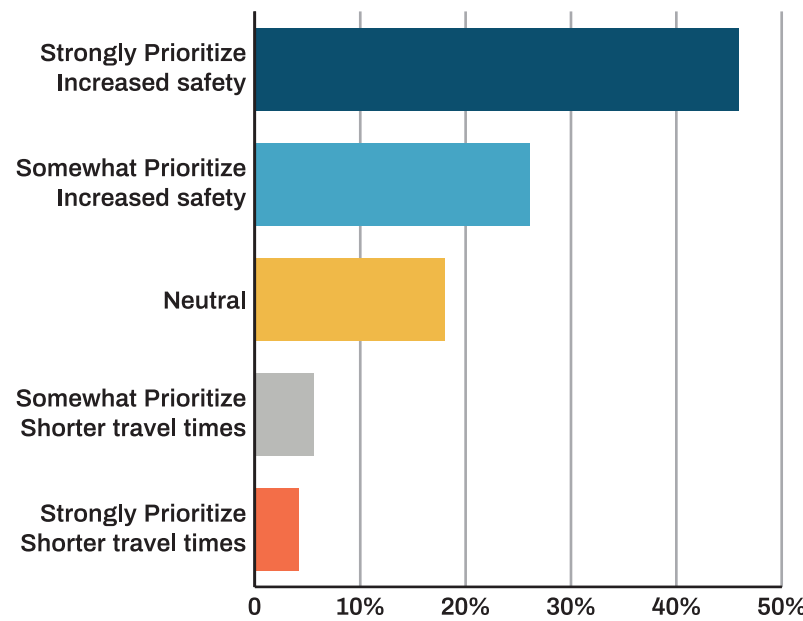
The survey had 344 responses, which is roughly double of the

previous LRTP. The survey included looking at how transportation infrastructure can impact property values and what types of projects should be prioritized. The results prioritized safety, investment in all modes of travel and showed expanding the existing system and focusing on shorter travel times as significantly less important.

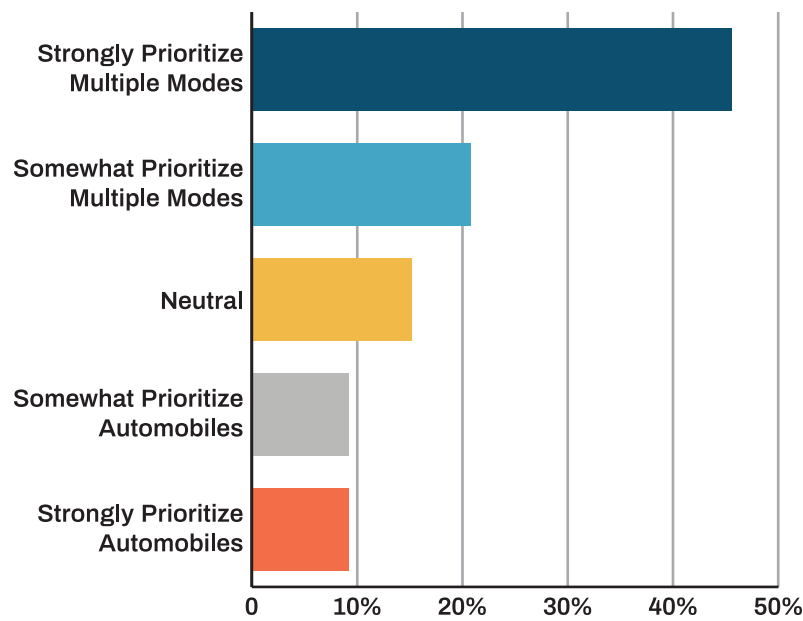
The figures below and on page 9 show some of the results.

Interesting/Innovative Project Feature: MPO Crash Report which created a crash report for each city, village, and town in the MPA. Staff was asked to present this crash report at a quarterly WisDOT MPO Director meeting. After discussions, it seems this was a first of its kind document in the State.

Prioritize: Safety and Travel Time

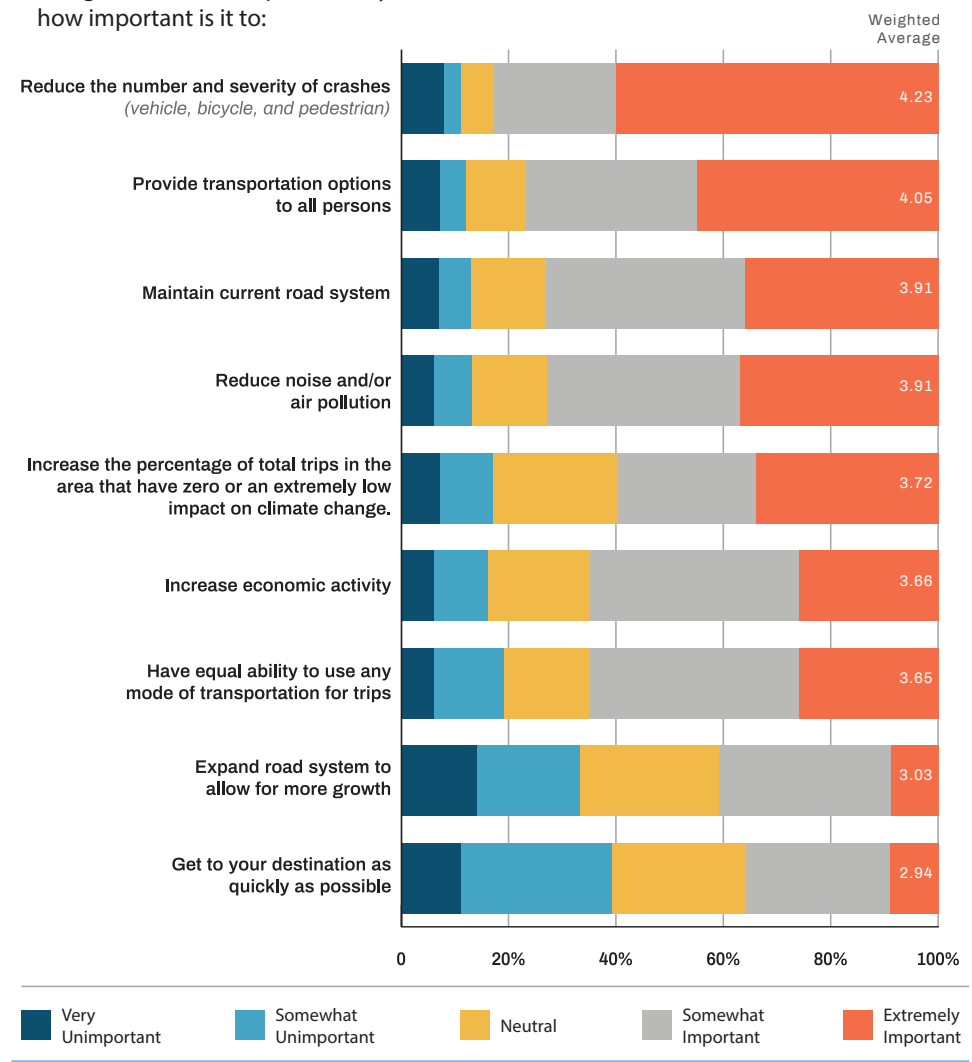


Prioritize: Modes of Travel



Introduction

In regards to the transportation system in the area, how important is it to:



28 Chippewa-Eau Claire MPO

Introduction

Figure 10 Transportation System Importance

Reduce the number and severity of crashes had the highest percent of Extremely Important (59%) and combination of Extremely Important and Somewhat Important (83%)

Maintain current road system and *Reduce noise and/or air pollution* had identical Weighted Average scores of 3.91. This score was the third highest and compares to the highest score of 4.21 and lowest of 2.94.

The four top options each had a combined Extremely Important and Somewhat Important score of over 70%. Each had a combined Extremely Unimportant and Somewhat Unimportant score of 13% or lower. Based on the survey, these four options are the most important options.

Increase the percentage of total trips in the area that have zero or an extremely low impact on climate change, Increase economic activity, and Have equal ability to use any mode of transportation for trips all have very similar Weighted Average scores. The scores are noticeably below the top four options and are significantly ahead of the bottom two options.

Expand road system to allow for more growth and *Get to your destination as quickly as possible* both had significantly low Extremely Important responses (both 9%) and the highest percentages of Very Unimportant (14% and 11%) and Somewhat Unimportant (19% and 28%). These two options are by far the least important options.

Long Range Transportation Plan 29

Transportation Improvement Plan Update

Started: August 2021
Completed: October 2021

The MPO completes a new Transportation Improvement Plan (TIP) every other year. The TIP is required for projects to receive Federal and State funding.

In Fall 2021, staff completed the 2022-2026 TIP. This TIP is for 2022 and 2023. The TIP lists all transportation related projects in the MPA that receive state and federal funding. The document also maps project locations in relation to both minority population and low-income populations at the Census Block geographic level. Over the two-year period, MPO staff administers numerous amendments to the TIP which add, delete, or modify projects and their funding amounts. These amendments are initiated by local units of government and WisDOT.

TIP map showing project locations in relation low-income population is located on page 11.

Urban Work Program

Started: August 2021
Completed: October 2021

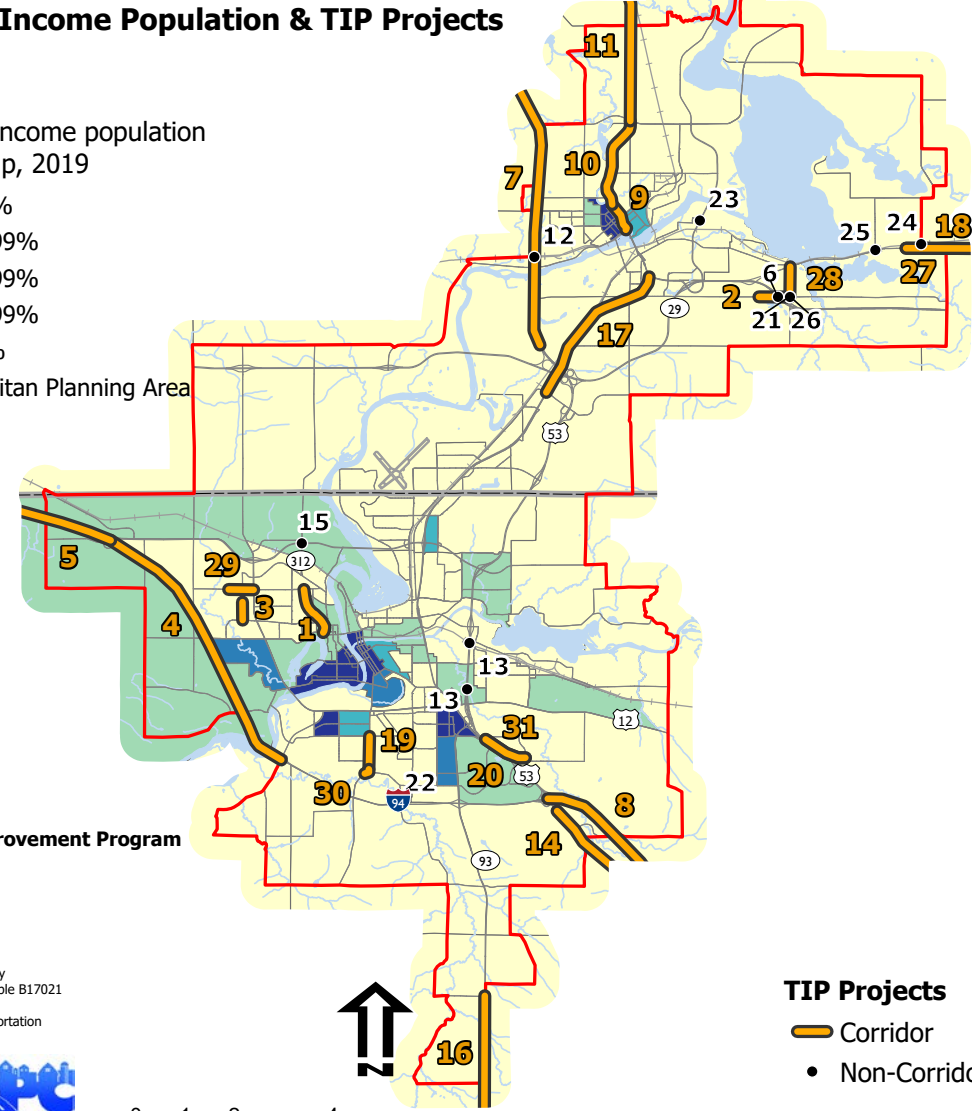
In Fall 2021, staff completed the 2022 Work Program. Along with the Long Range Transportation Plan and TIP, the annual Urban Work Program is one of the three requirements for the MPO. The Work Program lists all projects that the MPO will work on in 2022. In addition, the Work Program lists budgetary information. The Work Program process includes meetings with WisDOT, is approved by the MPO Policy Council, and is submitted to WisDOT after approval.

Chippewa - Eau Claire MPO

Map 3 - Low-Income Population & TIP Projects

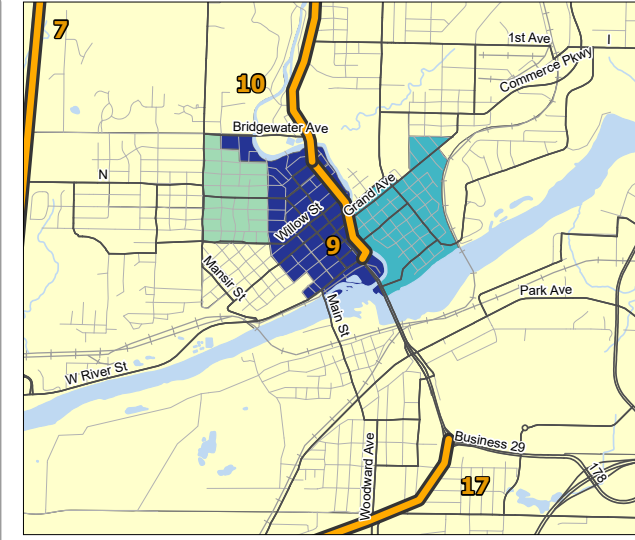
Percent low-income population of block group, 2019

- 0%-9.99%
- 10%-19.99%
- 20%-29.99%
- 30%-39.99%
- 40%-84%
- Metropolitan Planning Area

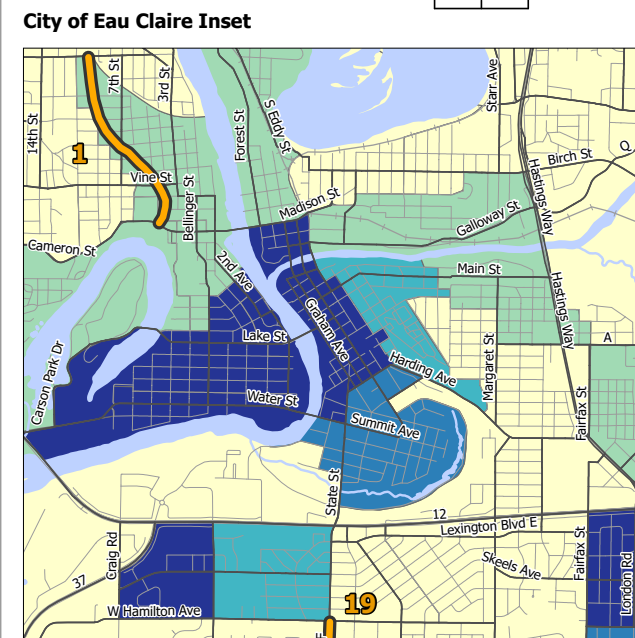


Transportation Improvement Program 2022-2026
September 2021
Data Sources:
-U.S. Census American Community Survey 2019 5-year estimates, Table B17021
-Local governments
-Wisconsin Department of Transportation

TIP Projects
— Corridor
• Non-Corridor



City of Chippewa Falls Inset



City of Eau Claire Inset

City of Altoona Bicycle and Pedestrian and Safe Routes To Parks Plan

Started: February 2021
Anticipated completion: Summer 2022

Staff has completed a variety of tasks for this project. These tasks consist of hosting task force meetings for the project, a public online survey, and reviewing other relevant City plans. In addition, the MPO created a GIS sidewalk layer for the City, which the City did not have. This layer shows where sidewalks are located in the City and where there are sidewalk gaps. After the completion of the sidewalk map, MPO staff then inventoried all the sidewalks in the City based on condition. With that data, the MPO was able to highlight which sidewalks were in most need of repair and map and score them based on proximity to uses that have high pedestrian use. This was the first time that the MPO had completed this type of existing conditions study.

Interesting/Innovative Project Feature: With the ArcGIS Field Maps program, staff was able to survey all the sidewalks in Altoona. On site, staff are able to use their phones to input sidewalk condition ranking and specific issues into the program. The data then get uploaded into the program and maps in real time.

The Sidewalk Quality Map is located on page 13.

City of Chippewa Falls Wayfinding Plan

Started: July 2021
Anticipated completion: Summer 2022

The wayfinding plan will provide direction and strategies to provide consistent and attractive information to assist the traveling public to navigate efficiently to key destinations within the City. To date, MPO staff has held an initial meeting with the City and inventoried 95 percent of the road signs in the City. All the inventoried signs have been mapped with a variety of information including: location, if the sign is intended for motorists or active transportation users, and physical condition.

Interesting/Innovative Project Feature: MPO real time data entry that locates the sign and sign condition. This data will allow City staff to easily put together a plan for new sign locations and update signs that are in poor condition.

Sidewalk Quality Map

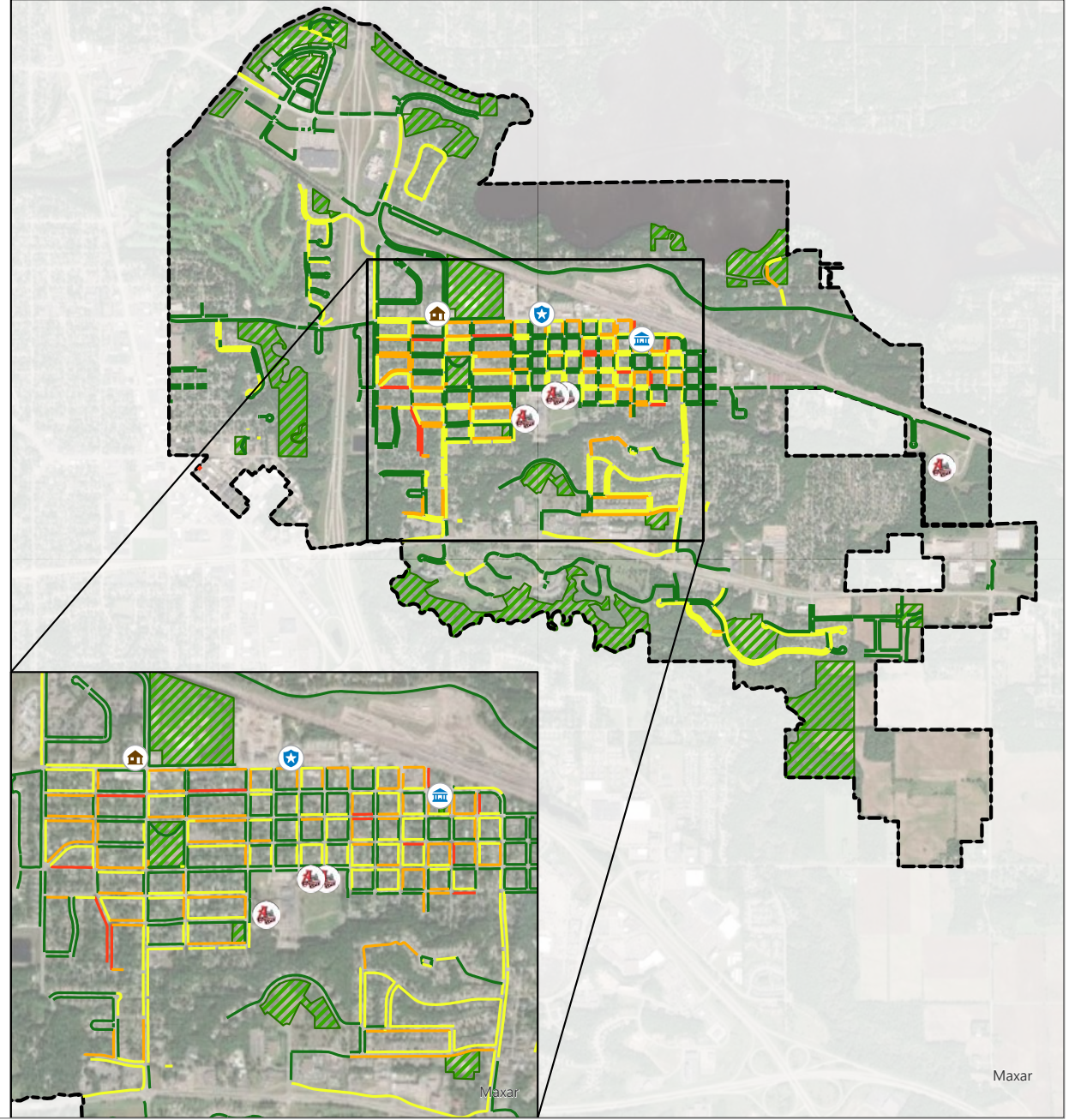
The map to the right shows the sidewalk pavement quality for the City of Altoona. Analysis based on the 2021 WCWRPC Sidewalk Survey.

- School
- Housing Authority
- Library/ City Hall
- Police Department
- City Parks
- Altoona City Limits
- Not cracked
- Some small cracks
- Some severe cracks
- Many severe cracks

November 2021

Data Sources:
WisDOA, WCWRPC, WISLR

0 0.25 0.5 1 Miles



**City of Eau Claire
Bicycle and Pedestrian Plan -
Areas Requiring Detailed Study**
Started: April 2021
Anticipated completion: Spring 2022

This project is a continuation of the City's Bicycle and Pedestrian Plan, which was completed in 2018. The Bicycle and Pedestrian Plan highlights 28 areas that need further study for better pedestrian and bicycle safety and accessibility. During initial discussions with the City, the City identified 21 of the 28 areas that should be in the Detailed Study. The Detailed Study Report lists key surroundings, crash data including a crash location map, and issues and strategies for each study area. In addition, the Study includes environmental/social justice maps that show Census Block data for households in poverty, minority populations, households with one or more persons with a disability, and households without access to a vehicle.

Interesting/Innovative Project Feature: With GIS, staff is able to create walk/bike sheds that show actual travel distance from the specific study area. In addition, staff is able to take the data from the environmental/social justice maps and highlight which Census Blocks have the highest population percentage combined in all four categories. The City can then look at that data and see what projects are located in areas with the most under-represented and most vulnerable populations.








The Study Area Map of South Farwell is located on page 15.

**County Highway T
Official Mapping**
Started: January 2021
Anticipated completion: Spring 2022

The MPO continues to work with the towns of Union and Wheaton, City of Eau Claire, Chippewa County, and Eau Claire County on the official mapping of the County Highway T corridor from the North Crossing to STH 29. In summer 2021, MPO staff helped plan and facilitate two public information meetings that were attended by dozens of citizens. The units of government are currently deciding on their preferred alternate for the corridor, and it is anticipated that the MPO will complete the official map materials for each entity in late winter or early spring 2022.

**S. Farwell (Eau Claire River to
Washington)**

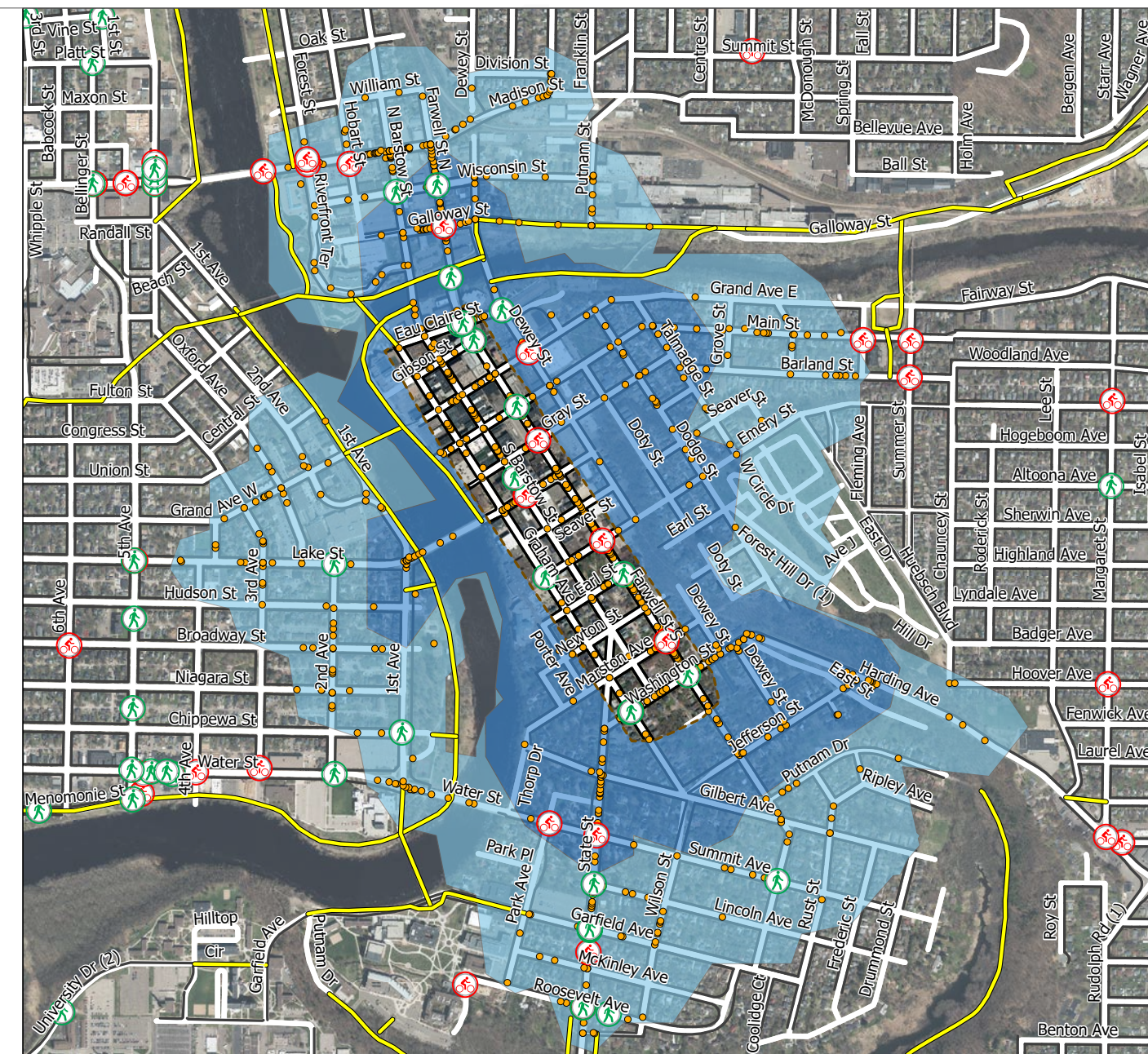
The map to the right shows the quarter and half mile walksheds for the study area, along with existing sidewalks, trails, and all bicycle or pedestrian reported crashes from 2015-2020.

-  Quarter Mile
-  Half Mile
-  Pedestrian Crash
-  Bicycle Crash
-  All Other Crashes
-  Sidewalk Present
-  Existing Municipal Trail

December 2021

Data Sources:
WisDOA, WISLR, WCWRPC,
City of Eau Claire

0 0.23 0.45 Miles



Capital Improvement Plan Story Maps

Started: Summer 2021
Ongoing

In reviewing possible ways for the MPO to continue to help and partner with local municipalities in the MPA, staff reached out to create Capital Improvement Plans (CIP) story maps. Instead of using a traditional map that only shows the geographic location of the project, staff has incorporated the use of story maps. In addition to showing the location of the projects, these story maps show a variety of other data. These data include costs, funding sources, and photos. Projects can be seen for the entire lifetime of the respective CIP and also at an individual year level. In 2021, the MPO completed CIP story maps for both the City of Chippewa Falls and Chippewa County.

Interesting/Innovative Project Feature: The WCWRPC has been using story maps for a few years, however, this is the first time they have been used in the MPO and for CIPs. Staff is able to customize these online maps for each community and can include any data a community would want.

The Chippewa County 2022 CIP Story Map Dashboard is located on page 17.

The Chippewa Falls CIP story map can be found [here](#).

McKinley Road Discussion

Started: Spring 2021
Ongoing

In May, MPO staff reached out to the City of Eau Claire, Town of Seymour, Eau Claire County, and Eau Claire Area School District to discuss possible funding options for a multi-use bicycle and pedestrian path along McKinley Road between the North Crossing and Birch Street/River Prairie Road. From comments and discussions during several planning processes, this corridor is a high priority to provide safe and accessible bicycle and pedestrian infrastructure between the multi-use paths on both ends and for the two ECASD schools along the corridor. With additional residential development adjacent to the Birch/River Prairie intersection, the need will only increase. At this time, the group has agreed to look into funding options for bicycle and pedestrian infrastructure along the length of this corridor.

Chippewa County Capital Improvement Projects 2022-2026

A Story Map

2022-2026 CIPs | 2022 CIP Dashboard | 2023 CIP Dashboard | 2024 CIP Dashboard | 2025 CIP Dashboard | 2026 CIP Dashboard

CIP Dashboard User Guide

Select a highway below to view the project location. Notice how the "funding source" chart changes based on which project you have selected. Use the "Full County" or "Reset" buttons to clear your selections.

Click features directly on the map to see a complete list of project information.

Select a Corridor

- Full County
- CTH N
- CTH XX
- CTH SS
- CTH X
- CTH S

Reset

Select a Bridge

- Full County
- CTH TT
- CTH T

Reset

Prepared By: West Central Wisconsin Regional Planning Commission

Corridor Funding Source

Bridge Funding Source

Project Type

2022 Corridor Budget

4.8M

Estimated Corridor Project Cost

2022 Bridge Budget

900k

Estimated Bridge Project Cost

Chippewa and Eau Claire County Crash Reports

Started: August 2021
Completed: October 2022

During the MPO Long Range Transportation Plan process, staff created a first of its kind MPO Crash Report, which had an individual crash report for every city, village, and town in the MPA. WCWRPC staff then took those capabilities and developed a regional crash report that highlights existing conditions, issues, and opportunities at the county level for unincorporated areas in all seven counties in the West Central Wisconsin Regional Planning Commission area, two of which are Chippewa County and Eau Claire County. Some of these areas are located in the MPA. This report is the impetus for future county crash reports for each of the seven counties, again including Chippewa and Eau Claire counties.

Interesting/Innovative Project Feature: With the heat maps, county staff and elected officials can find which areas have the highest concentration of crashes. From there, data can show what the highest contributing factors are for that specific location.

The Chippewa County Crash Report page is located on page 19.



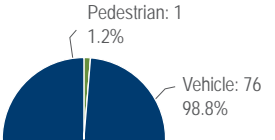
Chippewa County

Crash Assessment & Heat Map 2015-2019

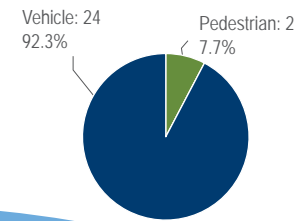
Issues/Highlights Total Crashes: 3,540

The highest concentration of crashes is located at the CTH X, CTH J, and STH 29 triangle area.
The second highest concentration of crashes is at and east of the US 53 and CTH S interchange.
Chippewa County has the second highest percentage of crashes that involve deer.
2.9% of all crashes are serious or fatal.

Serious Crashes: 77

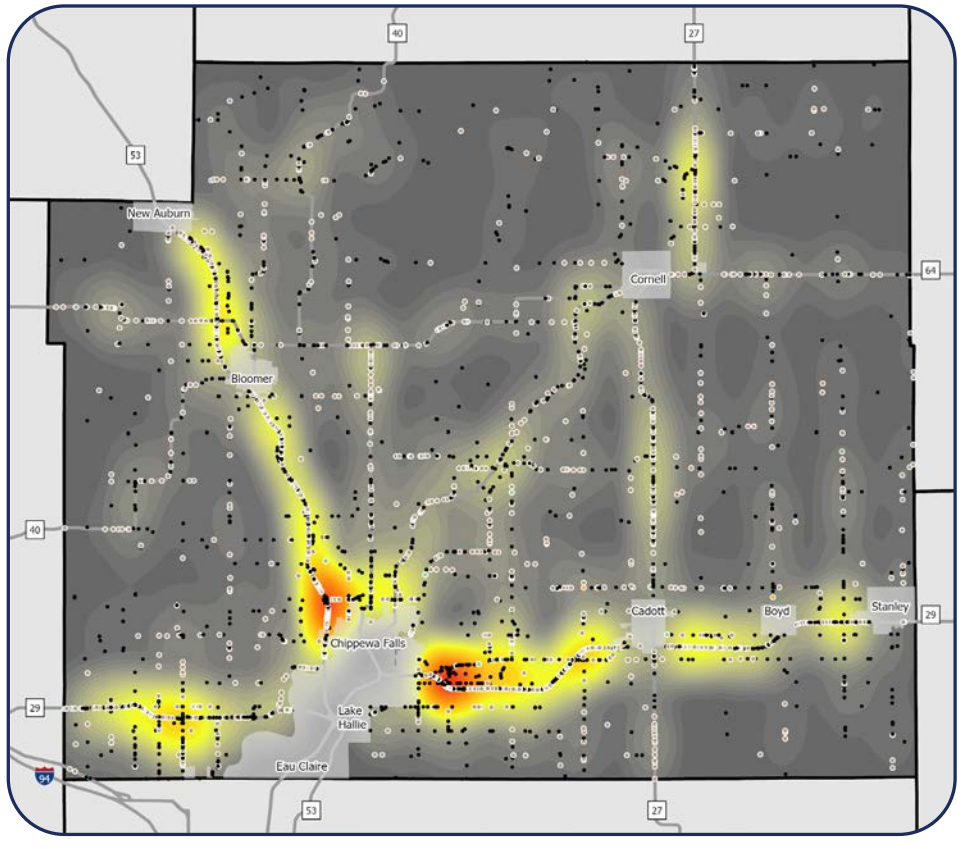
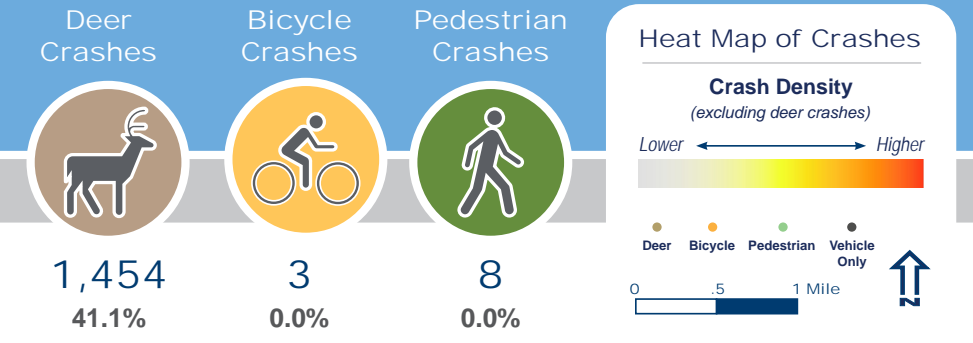
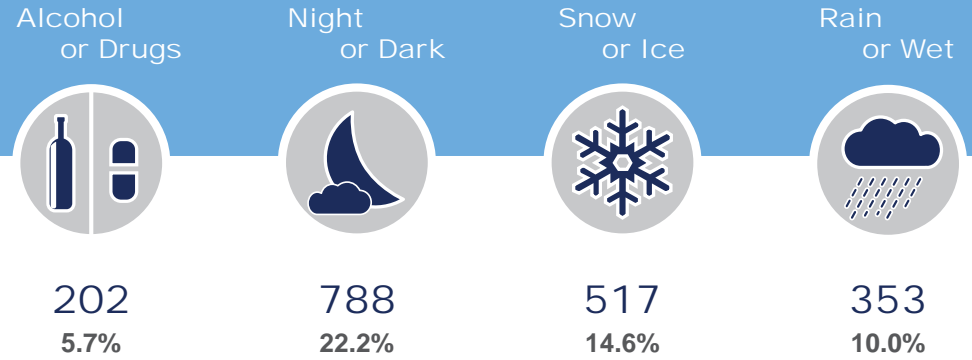


Fatal Crashes: 26



| Crashes Per Road Type | Count |
|-----------------------|-------|
| Interstate | 0 |
| State Highway | 1,819 |
| County Road | 1,086 |
| Local Street/Road | 635 |

CONTRIBUTING FACTORS



Town of Lafayette
Ray's Beach Brochure
Started: July 2021
Completed: August 2022

After attending a Lafayette Town Board meeting, the Town contacted the MPO to help complete a fundraising brochure for a new toilet facility at the Ray's Beach rest stop and beach. The MPO worked with the Town in July and August and completed the brochure for the Town.

The brochure is located to the right.

Ray's Beach Fundraiser

We Need Your Help!



After 15 years of use it's time to make some upgrades to the facilities at Ray's Beach

When the project was originally planned and constructed, pit toilets were installed that have no running water. Over time, the beach has grown in popularity and continues to experience record crowds. With increasing pressure on these aging facilities and sanitary concerns which were heightened by COVID-19, it's time to make these critical improvements to support and sustain this gem in our community.

The Town of Lafayette is currently negotiating with Canadian National Railway to acquire additional land to construct conventional bathrooms with running water. Preliminary designs also include a concession area for non-profit clubs and civic groups to use for fundraising activities.

ESTIMATED PROJECT COST:
\$200,000

Help us secure funding necessary to begin construction this Fall in order to have it ready for next season's beach activity!

Please send your donation today to:

Lafayette Town Hall
5765 197th Street
Chippewa Falls, WI 54729
Care Of: Ray's Beach Fundraiser Campaign
Call for Info: 715-723-7692



Donations are also conveniently accepted online at our **Go Fund Me Campaign**
Search "New Bathrooms at Ray's Beach" or use the following link address: <https://gofund.me/184d1196>
Thank you for supporting this community-led effort at Ray's Beach!

MPO Newsletter
Started: February 2021
Ongoing

In 2021, staff started a quarterly MPO newsletter. The goal of the newsletter is to have a brief update of current projects, highlight a specific project, pass along some interesting best practices and/or new ideas in the transportation field, and provide some fun and interesting information about the MPO.

A newsletter cover page is located to the right.

Chippewa-Eau Claire Metropolitan Planning Organization

CHIPPEWA-EAU CLAIRE

MPO QUARTERLY

02.2021
Edition #01

TAP Awards
Funding for three local bicycle and pedestrian projects

Project Updates
List of ongoing and future 2021 projects

Speed Limits
Do they impact property values?



COORDINATE PARTNER ADVOCATE SERVE

Safe Routes To School

Started: 2018
Ongoing

Over the past few years, MPO staff have worked with the Altoona, Chippewa Falls, and Eau Claire school district and city staff on Safe Routes To School (SRTS). In January 2020, WCWRPC submitted an application for funding from the WisDOT Transportation Alternatives Plan (TAP) to fund a SRTS Coordinator position for three years. Among other items, the application included funds for a SRTS Coordinator for the three school districts. These funds became available in June 2021, and the SRTS Coordinator position was hired in July 2021.

Since 2018, MPO and WCWRPC staff have completed numerous SRTS projects for the three school districts and the cities of Altoona, Chippewa Falls, and Eau Claire. This includes SRTS plans, a YouTube crossing guard training video, sign and bike parking inventories, a variety of mapping projects, and forming the Chippewa Valley SRTS Partnership.

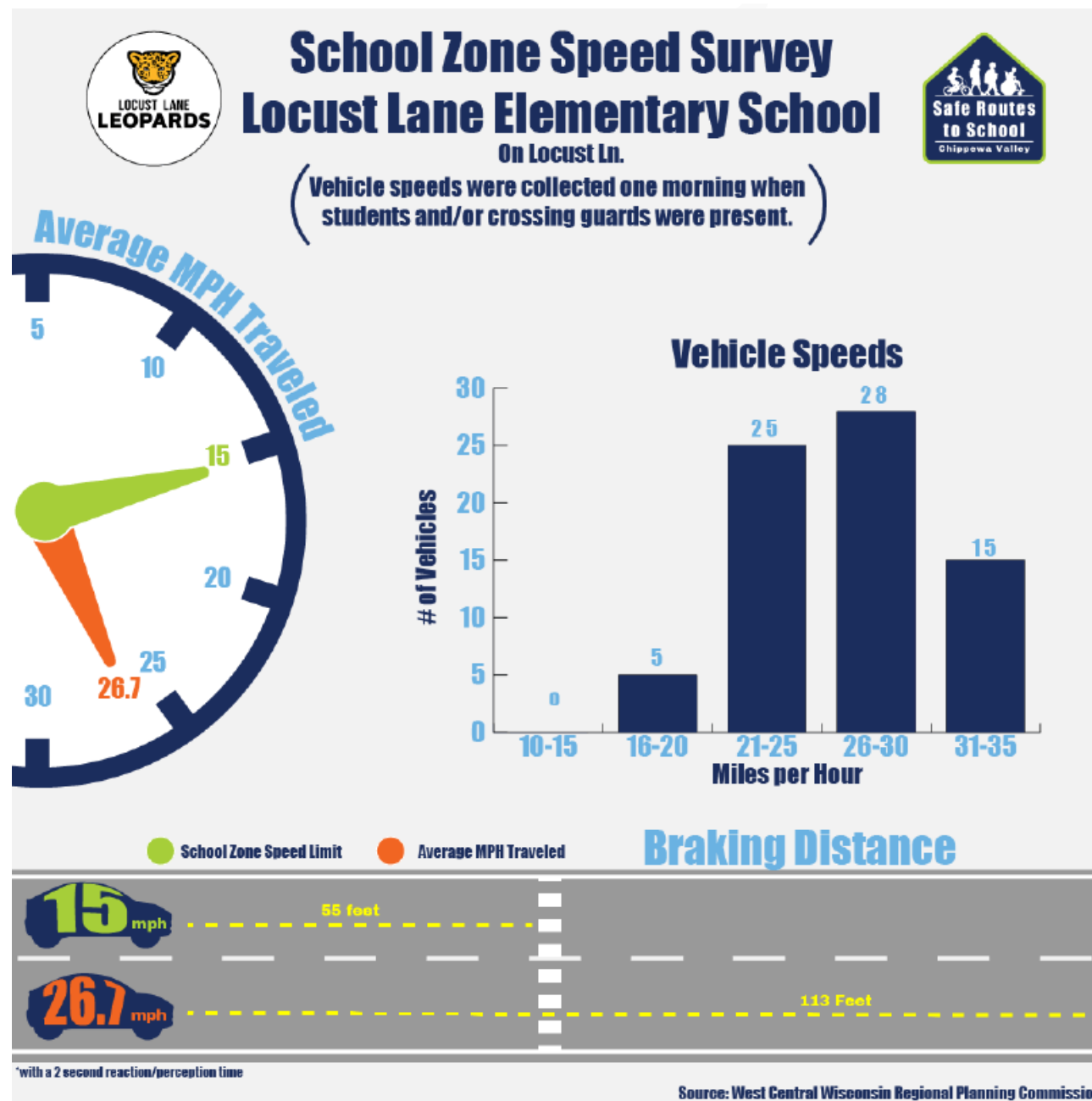
With the hiring of the full-time SRTS Coordinator, there has been a significant increase in work activity for SRTS in the Chippewa Valley. The majority of this 2021 work was funded by the TAP application, however, MPO staff hours were devoted to this program as well. There were several SRTS tasks that were started and/or completed in 2021. This included:

- Chippewa Falls SRTS Plan update
- Walk/bike audits for ECASD
- SRTS posters for each school to educate and promote SRTS
- School zone sign inventory for Eau Claire
- Sidewalk maps that show location and gaps of sidewalks
- Walk To School Day promotions and events
- Crossing guard pilot project that had city and school district staff help at crossing guard locations
- School zone speed studies that showed average speed, number of vehicles driving specific speeds, and stopping distance for the average speed (example on next page)

A much more detailed report on SRTS activity can be found in the Chippewa Valley SRTS Partnership Summary Report.



Eau Claire Area School District • Chippewa Falls Area Unified School District
School District of Altoona • West Central Wisconsin Regional Planning Commission
Making it safer and easier for kids to walk and bike to school in the Chippewa Valley



CHIPPEWA-EAU CLAIRE METROPOLITAN PLANNING ORGANIZATION



800 Wisconsin Street, Mail Box 9
Eau Claire, WI 54703

715.836.2918

wcwrpc.org