



# AGENDA

## Eau Claire County Highway Committee

**DATE:** Thursday, March 10, 2022

**TIME:** 7:30 a.m. CST

**LOCATION:** WebEx Teleconference

<b>Join by Computer:</b>	<a href="https://eauclairecounty.webex.com/eauclairecounty/j.php?MTID=m327f4d71f239d931b1c794100620ea9f">https://eauclairecounty.webex.com/eauclairecounty/j.php?MTID=m327f4d71f239d931b1c794100620ea9f</a>
<b>Join by Phone:</b>	1-415-655-011
<b>Meeting Number/Access Code:</b>	2598 206 7858
<b>Meeting Password:</b>	hHwW5ZE6Fr2

For those wishing to make public or a written comment, you must e-mail **ecchwy@co.eau-claire.wi.us** at least 30 minutes prior to the start of the meeting. You will be called on during the public session to make your comments. ***PLEASE MUTE DEVICES UPON ENTRY INTO MEETING.***

1. Call to Order and Confirmation of Meeting Notice
2. Review/Approval of Past Committee Meeting Minutes (2/10/2022) - Discussion/Action
3. Public Comment
4. Work Zone Awareness Week (April 11-15) Resolution of Support - Discussion/Action
5. Land Purchase Offer from Badger Refrigeration - Discussion/Action
6. Staffing Update: Hiring Status of Open Position - Discussion/Action
7. Duties of Commissioner State Statute Review - Discussion/Action
8. Formal Statement of Committee's New PASER Rating Goal - Discussion Action
9. Highway Report
  - Highway Commissioner Update - Jon Johnson
  - Operations Update - Brian Spilde
  - Engineering Update - Jon Johnson
10. Review of Payment Vouchers - Discussion/Action
11. Future Meeting Dates/Times/Agenda Items - Discussion/Action
12. Adjourn

PREPARED BY: Nicole Spaeth

PLEASE NOTE: Upon reasonable notice, efforts will be made to accommodate the needs of individuals with disabilities through sign language, interpreters, remote access, or other auxiliary aids. Contact the clerk of the committee or Administration for assistance (715-839-5106). For additional information on ADA requests, contact the County ADA Coordinator at 839-6945, (FAX) 839-1669 or 839-4735, TTY: use Relay (711) or by writing to the ADA Coordinator, Human Resources, Eau Claire County Courthouse, 721 Oxford Avenue, Eau Claire, WI 54703.



## MINUTES

**Eau Claire County | Committee on Highway**  
**Thursday, February 10, 2022 | 7:30 a.m.**  
**WebEx Virtual Teleconference**

**Committee Members Present:** Chair Steve Chilson, Vice-Chair Carl Anton, Supervisor Judy Gatlin, Supervisor Nathan Otto, *Supervisor Nick Smiar*

**Staff/Others Present:** Highway Commissioner Jon Johnson, Assistant Commissioner Brian Spilde, Engineering Technician Lori Engen, Fiscal Associate IV Nicole Spaeth, HR Director Jessica Rubin, County Administrator Kathryn Shauf, Finance Director Norb Kirk

1. **Meeting called to order by Chairman Chilson at 7:30 a.m.**
2. **Past committee meeting minutes (1/13/22) – Discussion/Action**
  - Supervisor Anton motioned to approve. Motion carried 4-0.
3. **Public Comment** – none
4. **New Highway Building Memorial to Ray Henning – Discussion/Action**
  - The Building Committee would like a recommendation from the Highway Committee on how to memorialize Ray Henning in the new Highway facility
  - Options discussed: 1) A plaque on the outside of the building, 2) Naming the Conference Room after Ray, 3) Having a plaque/picture of Ray in the conference room
  - Per Administrator Schauf the county does not have a policy on naming components of the organization. Naming the meeting room with a picture/plaque would be a is something we could easily accomplish.
  - Suggestion to involve Ray's wife in the planning. Possibly name a future internship position after Ray.
  - Supervisor Gatlin motioned to move forward with memorializing Ray Henning in the new highway facility conference room with a plaque and/or picture. Motion carried 4-0.
5. **Highway Improvement Plan – Discussion/Action**
  - HIP illustrates the vision/goal of department as well has information about plans for improving the highway system. Combines a lot of individual documents into one cohesive plan.
  - Good resource for county board who wants more info about what the highway committee does. Goal for creating this document is to provide better info at a higher level about what we do at the highway department whether for new/existing county board members or the general public.
  - VRF used primarily for improvement plans but could be used for general highway maintenance which will save more money in the future over waiting for deterioration and doing complete reconstructions.
  - Would like support from the committee in moving forward with this improvement plan so we can submit it to the Administrator's office.
  - Supervisor Gatlin motioned to support the development and implementation of the HIP as a living document. Motion carried 4-0.
6. **Highway Engineer Position – Discussion/Action**
  - Jon worked with HR & Corp Counsel to create a resolution to abolish current Engineering Supervisor position & replace it with a County Engineer position at a grade level higher in order to attract a qualified candidate.

# AGENDA ITEM #2

- This position will be a licensed position that will require their sign-off on specific projects. Qualification for certification can be done through accreditation through a college or years of experience, and completed by passing an exam to obtain license.
- Supervisor Gatlin motioned to approve the resolution to abolish Engineering Supervisor position and replace it with the County Engineer position. Motion carried 4-0.

## 7. Highway Report

- Highway Commissioner Update – Jon Johnson
  - **Bipartisan infrastructure law (BIL)** – federal funding for local programs. 1.29 billion dollars coming to the state of WI over the next 5 years. There is a specific timeline of how the funding gets allocated. Could get 80% of construction (only) projects costs covered for this first round of funding. Jon is evaluating our current funding that can be leveraged to participate in this bill for projects that qualify. Second round of funding in Feb covers more of the planning and construction costs. This program also allows for 15% of funding to go toward local roads. Jon is helping local townships apply for funding through this bill as well.
  - **General updates:** WHCA Road School in January – laid out 4 year plan for association, Jon now in past president role, moving forward with consultant management process. Also working on legislation, pushing Green Light Bill to put green lights on municipal equipment – allows us to replace amber lights with green lights to distinguish us from commercial vehicles which is more visible in low-light conditions
  - **Local MPO:** Metro planning org, working with Eric on funding from City of EC and Altoona. Will receive additional funds for CTH T projects from the state for that project.
- Operations Update – Brian Spilde
  - Still working on brushing and clearing for CIP and maintenance plans. Fixing guardrail damage from winter accidents. Started the anti-icing program (worked on 94 and Clairemont).
  - Shop – working on a truck-mounted attenuator. Have been reviewing gain/loss on maintaining old trucks verses upgrading to new trucks.
  - Looking forward to summer program to bid out for construction materials.
  - Brian & Chris are working with state DOT on plow routes reviewing the category of roadways and service model.
- Engineering Update – Jon Johnson
  - All current 2022 projects are underway for design. McGaver Creek on county H – still scoping this project but all others are moving forward. Looking to get engineering contracts in place for projects that need to be designed by August. RFP out for bridge inspections, due next week. Over 100 inspections due for 2022-2023.

## 8. Review of Payment Vouchers (1/21/22, 1/28/22 [2], 2/4/22 [2]) – Discussion/Action

- Supervisor Chilson motioned to approve. Motion carried 4-0.

## 9. Future Meeting Dates, Times, and Agenda Items – Discussion/Action

- Request from Pagonis to have a joint finance/highway meeting to discuss future highway plans, PASER ratings, general funding, BIL funding. Proposed a potential meeting Thursday, Feb 24 @ 8:00 am.
- Next meeting: **Thursday, March 10, 2022 at 7:30 am**
- Future Agenda item: Update on open positions (requested by Supervisor Gatlin)

## 10. Meeting adjourned by Chairman Chilson at 9:03 a.m.

Respectfully submitted,

*Nicole Spaeth*

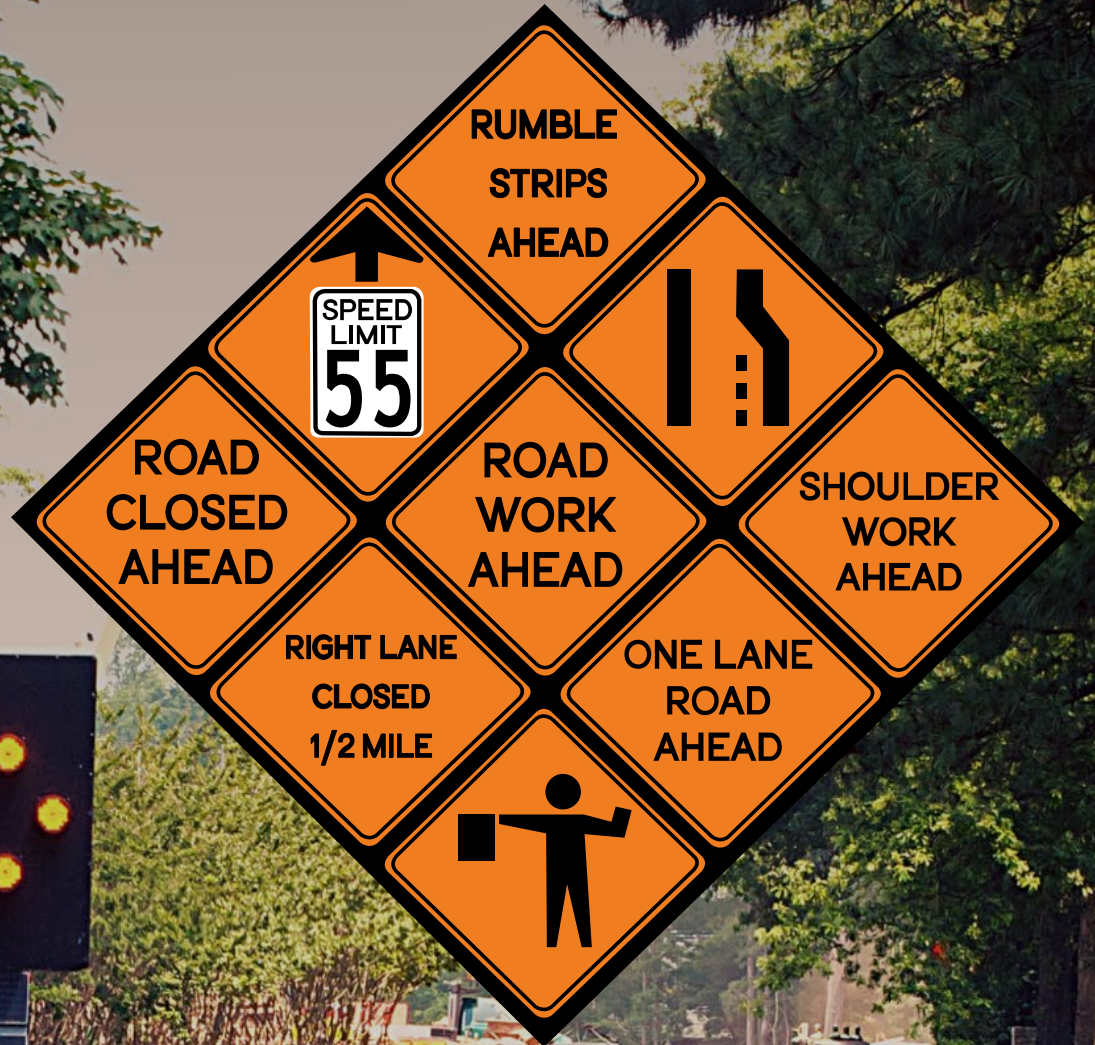
Nicole Spaeth, Fiscal Associate IV  
Eau Claire County Highway Department



# EAU CLAIRE COUNTY

NATIONAL WORK ZONE AWARENESS WEEK

APRIL 11 – 15, 2022



#NWZAW #Orange4Safety



WWW.NWZAW.ORG

AGENDA  
ITEM #4

## WORK ZONES ARE A SIGN TO SLOW DOWN



DEDICATED TO SAFE TRANSPORTATION.



For Immediate Release  
(Date)  
(Contact)

## County officials remind drivers to stay safe this construction season

                     County Highway Commissioner                      urges people to drive carefully in highway work zones throughout the 2022 construction and maintenance season.

“Buckle up, phone down – every trip every time,”                      said. “Highway workers work very hard on doing great work for their communities, and just like you they want to make it home at night to their families.”

Over the past five years, there have been more than 15,000 crashes in Wisconsin work zones causing 71 deaths and more than 5,800 injuries.

In Wisconsin, work zones include major highway construction and rehabilitation, maintenance, emergency response, utility work, municipal projects and more – any time in which there are flashing lights, signs, barrels or workers on the road.

National Work Zone Awareness Week takes place April 11 through 15. This year’s theme is “*work zones are a sign to slow down.*”

Wednesday, April 13, is “Go Orange Day,” in which people are asked to wear something orange in support of highway safety. Social media pictures and posts are welcome using the #OrangeForSafety hashtag, but please always refrain from using electronics while driving.

Work Zone Safety Awareness Week is sponsored by federal, state and local transportation officials to draw attention to the safety needs of road workers during construction season. Generally, crashes occur when drivers speed through a work zone, do not pay attention to changing road conditions, run into other vehicles or highway equipment or drive off the road completely.

“We ask everyone on the road to eliminate distractions and be mindful of speed,”                     , said. “Even in areas with reduced speed limits, things can happen in an instant. Always expect the unexpected.”

While typical construction work zones are prevalent throughout the county and state, there are also significant numbers of maintenance operations that may be short-term or moving operations. Drivers are reminded of the state’s, Move Over Law, which requires drivers to shift lanes or slow down to provide a safety buffer for a squad car, ambulance, fire truck, tow truck, utility vehicle, or highway maintenance vehicle that is stopped on the side of a road with its warning lights flashing.

In addition, emergency or work zone areas are protected by laws that aim to keep workers safe. Fines double in construction zones and cell phone use is banned. A [new state law](#) took effect in

December 2021 that expands these protections to areas surrounding emergency response vehicles with flashing lights.

Before traveling, drivers are encouraged to check 511 Wisconsin (511wi.gov and @511WI on Twitter) or use the 511 Wisconsin smartphone app for updates on road conditions and traffic flow.

**Giving undivided attention to the road:**

- Don't fool around. Eliminate distractions like eating, drinking, talking on the phone, or fiddling with electronic devices.
- Expect the unexpected. Speed limits may be reduced, traffic lanes may be changed, and people and vehicles may be working on or near the road.
- Slow down. A car traveling 60 mph travels 88 feet per second, and the faster you go the longer it takes to stop.
- Give yourself room. Rear-end collisions are the most common work zone crashes, so don't tailgate.
- Allow about three seconds of braking distance. Look for signs. Orange, diamond-shaped signs usually give you ample warning of lane closings, construction areas, and flaggers and other workers ahead.
- Be patient. If you don't see workers, that doesn't mean they're not there. Observe the signs until you see one that says you've left the work zone.
- Plan ahead. Leave early or map out an alternate route. Find the latest road conditions and work zone news at 511 Wisconsin.
- Follow the law. Slow down and move over, if possible, when you see flashing lights.
- Consider turning off the phone until you reach your destination.
- During a long drive, consider leaving a voice mail explaining how long you'll be unavailable.
- If you have to make a call, find a secure place to pull over and stop, such as a wayside or a gas station.

Learn more: <http://wisconsindot.gov/Pages/safety/education/workzone/default.aspx>





## OFFICE of the GOVERNOR

# Proclamation

*WHEREAS*; since 2000, National Work Zone Awareness Week has marked the start of construction season across our country, promoting road worker safety and cautious driving in work zones; and

*WHEREAS*; no matter where you go in Wisconsin, folks can all agree that we need to provide and support high-quality roads, highways, and bridges; and

*WHEREAS*; there are typically more than 300 state highway and bridge improvement projects—in addition to other municipality-sponsored construction projects—scheduled across Wisconsin every year that require the establishment of work zones; and

*WHEREAS*; last year, Wisconsin recorded more than 2,100 work zone crashes that resulted in 857 injuries and 12 fatalities; and

*WHEREAS*; safe roads, bridges, and highways mean that our kids can ride the school bus safely to school, workers can get to and from their jobs, industries can confidently move products from point A to point B, and visitors and residents, alike, can travel across our beautiful state and safely enjoy all that Wisconsin has to offer; and

*WHEREAS*; with the passage of Wisconsin Act 115 in December 2021, penalties were increased for traffic violations that result in bodily harm and occur in a road construction area, utility work area, or an emergency response area to defend the safety of the dedicated folks whose jobs take them onto our roads each day; and

*WHEREAS*; road workers, like all workers, have the right to a safe work environment, and all drivers have the obligation to exercise extra caution when traveling through work zones; and

*WHEREAS*; this week, the state of Wisconsin joins road workers throughout Wisconsin and the United States in advocating for safe driving in work zones;

*NOW, THEREFORE*, I, Tony Evers, Governor of the State of Wisconsin,  
do hereby proclaim April 11 – 15, 2022, as

## NATIONAL WORK ZONE AWARENESS WEEK

throughout the State of Wisconsin and I commend this observance  
to all our state's residents.

IN TESTIMONY WHEREOF, I have  
hereunto set my hand and caused the Great  
Seal of the State of Wisconsin to be  
affixed. Done at the Capitol in the City of  
Madison this 4<sup>th</sup> day of March 2022.

  
TONY EVERS  
GOVERNOR

By the Governor:

  
DOUGLAS LA FOLLETTE  
Secretary of State





1 Enrolled No. RESOLUTION File No.  
2  
3

4 RESOLUTION DESIGNATING THE WEEK OF APRIL 11th THROUGH APRIL 15TH  
5 “WORKZONE SAFETY AWARENESS WEEK IN EAU CLAIRE COUNTY”  
6

7 WHEREAS in 1999 the Federal Highway Administration (FHWA) partnered with the  
8 American Association of State and Highway officials (AASHTO) and more recently with the  
9 American Traffic Safety Services Association (ATSSA) to create the National Work Zone  
10 Safety Awareness Week campaign, held annually in April prior to the construction season for  
11 much of the nation; and,  
12

13 WHEREAS, the Wisconsin County Highway Association is asking all seventy-two (72)  
14 counties in the state to unite and kick-off “Work Zone Safety Awareness Week” with a  
15 resolution and campaign to raise awareness for its’ workers and those of various highway  
16 contractors performing work for the counties; and,  
17

18 WHEREAS, between 2016 and 2021, there were 59 fatalities recorded as a result of more  
19 than 13,000 work zone crashes and injuring more than 5,000 people; and,  
20

21 WHEREAS, construction and maintenance activities on our streets and highways  
22 periodically require that work zones be established; and,  
23

24 WHEREAS, there has been an average of 2,677 work zone crashes in Wisconsin in each  
25 of the last five years; and,  
26

27 WHEREAS, in 2020, Wisconsin suffered from 1,700 crashes in road construction and  
28 maintenance zones, resulting in over 665 injuries and 17 fatalities; and,  
29

30 WHEREAS, the Federal Highway Administration has designated April 11 through April  
31 15, 2022 as National Work Zone Safety Awareness Week with this year’s theme “Work Zones  
32 are a Sign to Slow Down”, which focuses on awareness to all drivers in work zones of their  
33 speed and proximity to workers,  
34

35 THEREFORE BE IT RESOLVED by the Eau Claire County Board of Supervisors that  
36 the week of April 11th through April 15th, 2022 be designated as “Work Zone Safety  
37 Awareness Week” in Eau Claire County.  
38

39  
40 I hereby certify that the foregoing  
41 correctly represents the action of the  
42 Highway Committee on  
43 March 10, 2022, by a vote of  
44 \_\_\_\_ for, and \_\_\_\_ against.  
45  
46

47 \_\_\_\_\_  
48 Steve Chilson, Chair  
Highway Committee





AGENDA  
ITEM #5

Badger Truck  
Refrigeration Inc

WisDOT Park  
& Ride 18-01

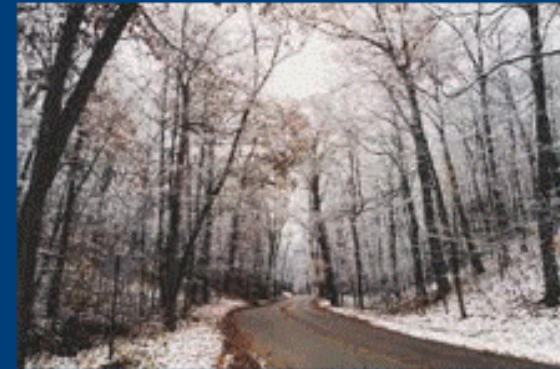
Texaco Dr Texaco Dr Texaco Dr Texaco Dr

**PARCEL OF LAND ABOUT 200 X 200  
THAT WE WOULD LIKE TO BUY**

# *Roles and Responsibility of Highway Committee and Highway Commissioner*

WCHA Professional Development Conference – December 18, 2018

---



AGENDA  
ITEM #6



## *Today's Presentation:*

1. Overview of County Government Structure.
2. County Highway Departments – General Statutory Authority and Obligations.
3. Powers and Duties of the Highway Committee (Assuming the County Highway Commissioner is NOT appointed by the County Executive or County Administrator...)
4. Powers and Duties of the Highway Commissioner (Assuming the County Highway Commissioner IS appointed by the County Executive or County Administrator...)
5. Examples.
6. Questions?

# Section 1

## Overview of County Government Structure



# COUNTY STRUCTURE

- County authority comes from Wis. Stat. Chapter 59.
- Counties are a body corporate that can sue and be sued.
- Powers are limited by state statute.
- Home Rule: Wis. Stat. § 59.03(1) - Every county may exercise any organizational or administrative power, subject only to the constitution and to any enactment of the legislature which is of statewide concern and which uniformly affects every county.
- Counties are governed by a board of supervisors.

# FORMS OF COUNTY GOVERNMENT LEADERSHIP IN WISCONSIN

Three types:

- County Executive (11 counties)
- County Administrator (27 counties)
- County Administrative Coordinator (34 counties)



## COUNTY EXECUTIVE – WIS. STAT. § 59.17

- Appoints and supervises department heads subject to county board confirmation.
- Appoints members to county boards and commissions.
- Submits an annual budget to the county board.
- Has veto authority.

## COUNTY ADMINISTRATOR – WIS. STAT. § 59.18

- Chief administrator of the county.
- Responsible for coordinating all administrative and management functions not vested by law with other officers.
- Appoints and supervises county department heads/administrators.
- Appoints members to boards and commissions, with county board confirmation.
- Coordinates, prepares and submits annual budget.

## ADMINISTRATIVE COORDINATOR – WIS. STAT. § 59.19

- “The administrative coordinator shall be responsible for coordinating all administrative and management functions of the county government not otherwise vested by law in boards or commissions, or in other elected officers.”
- Similar to county administrator but does not have appointment authority and coordinates rather than supervises.
- Some counties meet the requirement by appointing an elected official.



# COUNTY BOARD SUPERVISORS

- Supervisors serve primarily a *legislative* function.
- The *legislative* function is largely limited to policy making, law making, budgetary approval and cooperative decision making.
- No operational control resides with individual supervisors.
- Involve, represent and be accountable to the public.
- Determine services to be provided.
- Adopt budget – levy taxes.
- Regulate within statutory authority.
- In other words, ENACT POLICY.

# COUNTY STAFF ROLES & RESPONSIBILITIES

- Have an obligation to carry out duties in a manner consistent with the policy direction of the county board and operational direction of the county executive or county administrator.
- Make recommendations and give professional advice.
- Do not make policy other than internal as authorized.

# POLICY VS. ADMINISTRATION

- Policy (Board) = “What” and “Why”
- Administrative/Operations (Staff) = “Where,” “When” and “How”

*Example please...*



# POLICY VS. ADMINISTRATION/OPERATIONS

## Policy

- “What” – Will the county establish a hiking trail system?
- “Why” – Will the system benefit the county?

## Administration/Operations

- “How” – Who will build and maintain the system?
- “When” – What is the timeframe for implementation?
- “Where” - Where will the system need to be maintained?
- The dividing lines blur when implementing a plan, but once the plan is complete, the “hand off” occurs.

# HOW OUR COURTS VIEW THE DISTINCTION BETWEEN POLICY AND ADMINISTRATION

*Schuette v. Van De Hey*, 205 Wis.2d 475 (Ct. App. 1996):

- The county boards function is primarily policy making and legislative, while the county executive functions as an administrator and manager. *See* 80 Op. Atty Gen. 49 (1991).
- Policy has been defined as “a high-level overall plan embracing the general goals and acceptable procedures esp. of a governmental body.” *Webster's New Collegiate Dictionary* 890 (1977).
- “Legislative power, as distinguished from executive power, is the authority to make laws, but not to enforce them, or appoint the agents charged with the duty of such enforcement.” *See* 2A MCQUILLIN, MUNICIPAL CORPORATIONS § 10.06 at 311 (3d ed. 1996).
- “The crucial test for determining what is legislative and what is administrative has been said to be whether the ordinance is one making a new law, or one executing a law already in existence.” *Id.*

# Section 2

## County Highway Departments – General Statutory Authority and Obligations

# General Statutory Authority and Obligations

## General Statutory Framework:

- Wisconsin Statute Chapter 83 – County Highways
- Wis. Stat. § 83.01(7) – County Highway Commissioner’s Duties
- Wis. Stat. § 83.015(2) – County Highway Committee’s Duties.



## *KEY POINT FOR THE DAY!*

- In any county with a highway commissioner appointed by a county executive or a county administrator, the county highway committee is only a policy-making body determining the broad outlines and principles governing administration.
- In that case, the county highway commissioner has the administrative powers and duties prescribed for the county highway committee by statute.

## *KEY POINT FOR THE DAY!*

**IF....**

The County's County Highway Commissioner *is* appointed by the County Executive or County Administrator (or in a county with a population of 500,000 or more),

**THEN...**

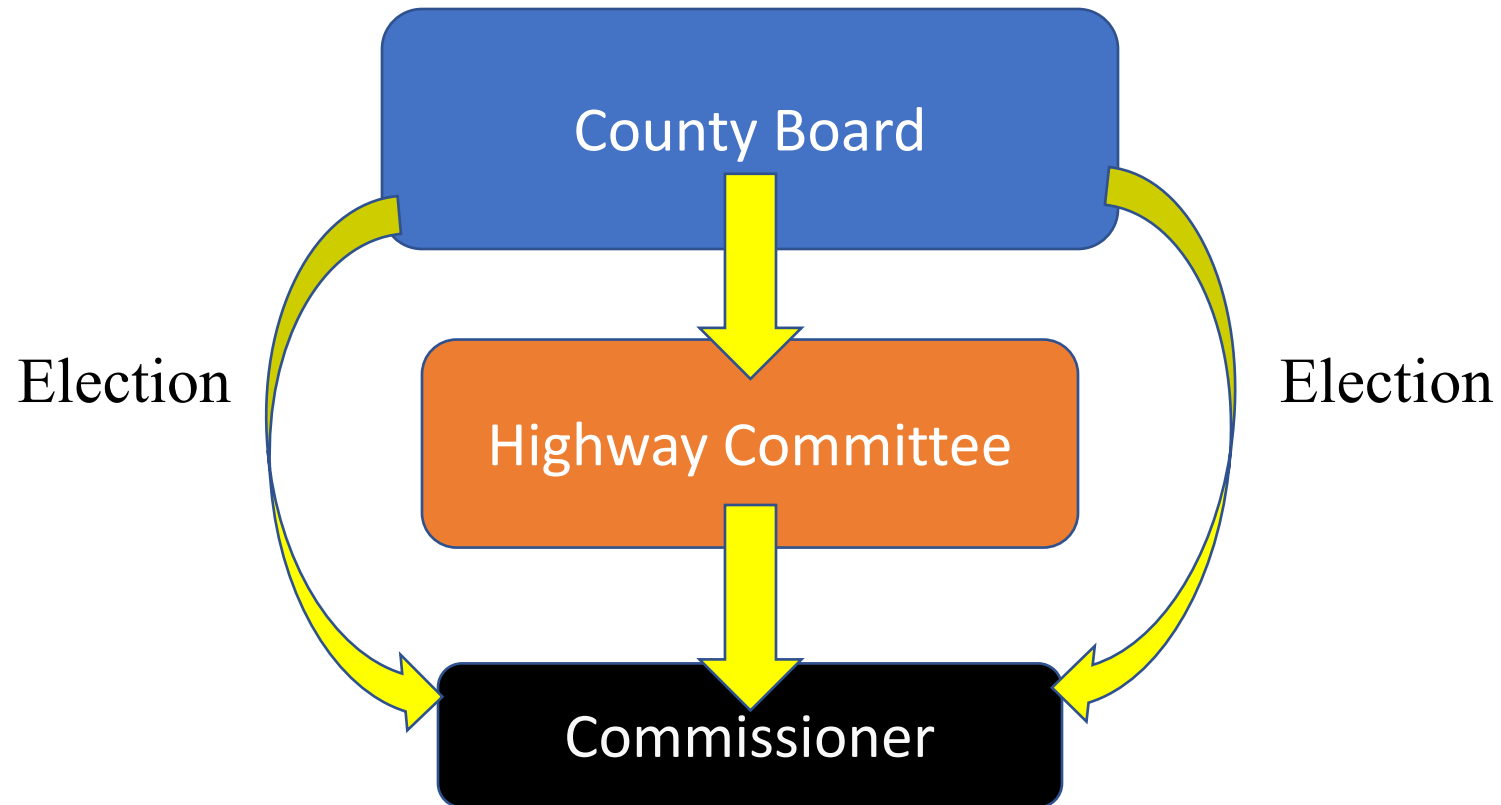
The County Highway Committee “shall be only a policy making body determining the broad outlines and principles” governing the administration of the county highway program.

## *KEY POINT FOR THE DAY!*

*However...*

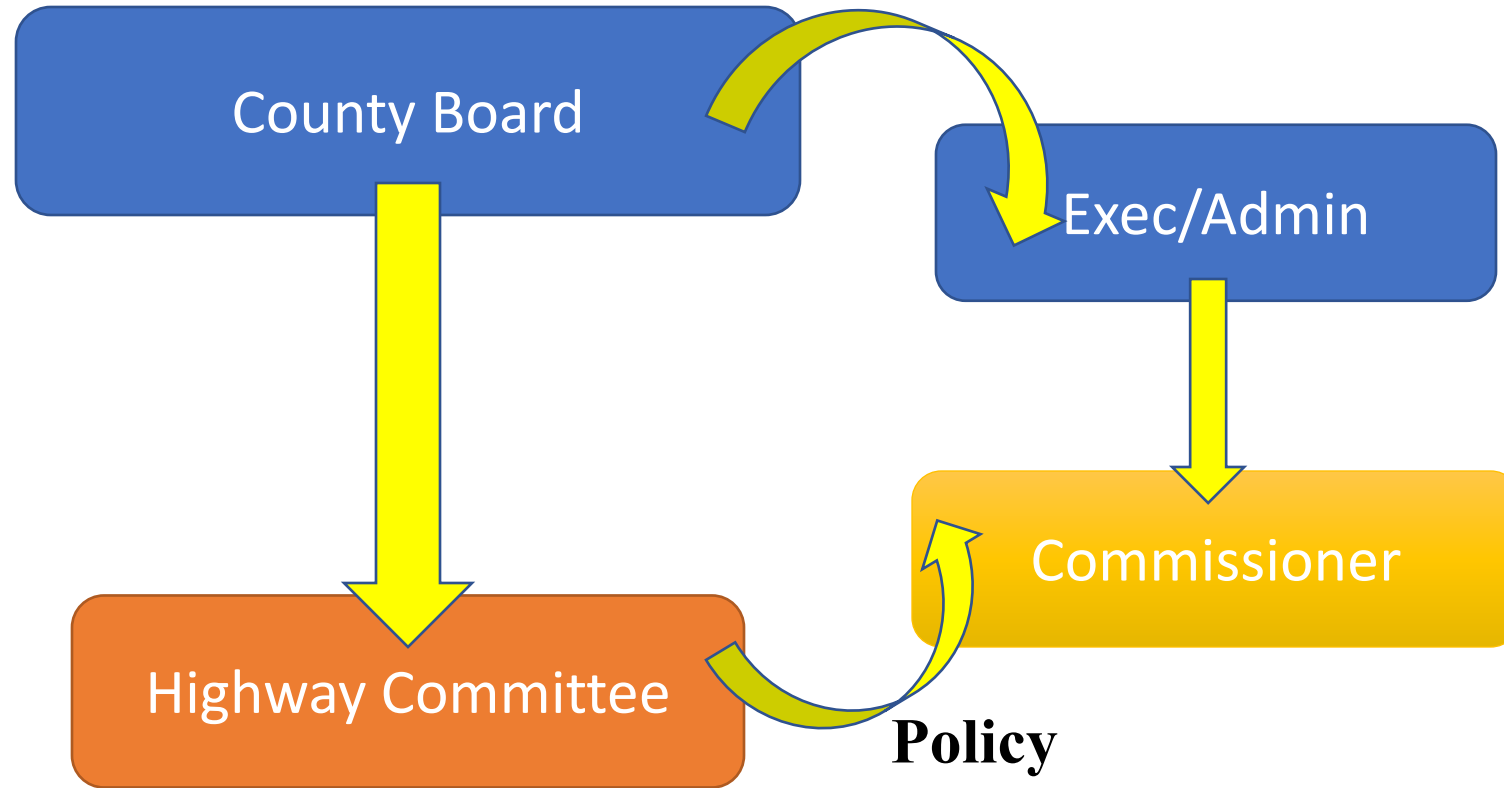
- In any county with a highway commissioner *is not* appointed by a county executive or a county administrator, but rather is elected by the county board. The county highway commissioner reports to the county highway committee.
- In that case, the county highway commissioner does not have the administrative powers and duties prescribed for the county highway committee by statute. The county highway committee maintains those powers and duties.

# COUNTIES *WITHOUT* AN EXECUTIVE OR ADMINISTRATOR





# COUNTIES *WITH* AN EXECUTIVE OR ADMINISTRATOR



# Section 3

## Powers and Duties of the Highway Committee

(Assuming the County Highway Commissioner is NOT appointed by the  
County Executive or County Administrator...)

# General Statutory Authority and Obligations

## *County Highway Committees—Membership*

Notwithstanding Wis. Stat. § 83.015(1)(a), each county board may fix the number of members of the county highway committee, the membership, manner of appointment, method of filling vacancies and the terms of the members.

## Statutory Authority and Obligations – County Highway Committee

### *Election of County Highway Commissioner:*

In counties *without* a county executive or county administrator, the county highway commissioner is elected by the county board for a 2 year term unless the county board establishes a different term. *See* Wis. Stat. § 83.01.



Statutory Authority and Obligations:

Duties of the County Highway Committee (Assuming the County Highway Commissioner is NOT appointed by the County Executive or County Administrator...)

*Wis. Stat. § 83.015(2): County Highway Committees—Powers and Duties*

- Purchase and sell road machinery as authorized by the county board.
- Determine whether county aid construction shall be let by contract or shall be done by day labor.
- Enter into contracts on behalf of the county.
- Enter private lands with their employees to remove weeds and brush and erect or remove fences that are necessary to keep highways open for travel during the winter.

Statutory Authority and Obligations:

Duties of the County Highway Committee (Assuming the County Highway Commissioner is NOT appointed by the County Executive or County Administrator...)

*County Highway Committees—Powers and Duties (con't.)*

- Direct the expenditure of highway maintenance funds received from the state or provided by county tax.
- Audit all payrolls and material claims and vouchers resulting from the construction of highways.
- Perform other duties imposed by law or by the county board.
- Meet from time to time at the county seat to audit all payrolls and material claims and vouchers resulting from the construction of highways.
- Perform such duties imposed by law or the county board.

# County Highway Committees - Powers and Duties: Road Supplies

## *Road Supplies:*

- The county highway committee is authorized to sell road building and maintenance supplies on an open account to any city, village, town or school district within the county; and any such city, village, town or school district is authorized to purchase such supplies.
- The attorney general has found that it is permissible for a county highway department to sell road sand or salt to municipalities either for their own use or for resale if, in good faith, county officials believe that the purchaser does not intend to resell the sand or salt for a private purpose.
- Generally, a county may not sell road maintenance supplies to a private party that intends to resell the supplies on the private market. *See OAG 2-01.*

## County Highway Committees - Powers and Duties: Acquisition of Land for Highway Purposes

- The county highway committee may acquire any lands or interest therein needed to carry out the provisions of Wis. Stat. Ch. 83. Wis. Stat. § 83.07.
- Whenever the county highway committee is unable to acquire the same by purchase at a reasonable price such property may be acquired by condemnation under Wis. Stat. Ch. 32 (eminent domain).

# County Highway Committees - Powers and Duties: Acquisition of Land for Highway Purposes

- The county highway committee may acquire by gift, devise, purchase or condemnation any lands or interest in lands for the improvement, maintenance, relocation or change of:
  - any county aid or other highway; or
  - any street or bridge on a county aid or other highway; or
  - any street that the county is empowered to improve or aid in improving or to maintain.

*See Wis. Stat. § 83.08(1)(a).*

# Acquisition of Land for Other Purposes

- Whenever the county highway committee considers it necessary to acquire any lands or interests in land for any purpose (including for quarries, gravel pits, drainage across land or to beautify highways), it shall so order. *See Wis. Stat. § 83.07 and Wis. Stat. § 83.08; see also Wis. Stat. § 32.05(1)(a) and Wis. Stat. § 83.18 (entry upon land).*
- The order or a separate map or plat must show the old and the new locations and the lands or interests required.
- The committee must file a copy of the order and map with the county clerk or may file or record a plat with the register of deeds in accordance with § 84.095.
- The committee must attempt to acquire the lands or interest in lands at a price considered reasonable by the committee.
- The instrument of conveyance must name the county as grantee and must be filed with the county clerk and recorded with the register of deeds.
- The cost of land and rights acquired shall be paid out of available improvement or maintenance funds.



## Statutory Authority and Obligations

### County Highway Commissioners—Powers and Duties if NOT Appointed by a County Executive or County Administrator

#### *So what does a County Highway Commissioner do if not appointed?*

- The county highway commissioner has charge, under the direction of the county highway committee, of the construction of highways built with county aid and the maintenance of all highways maintained by the county.
- The county highway commissioner shall perform all duties required by the county board and by the county highway committee and shall do or cause to be done all necessary engineering and make all necessary examinations for the establishment, construction, improvement and maintenance of highways.
- The county highway commissioner shall have charge of all road machinery and tools.
- And all the other duties set forth in Wis. Stat. § 83.01(7)...

# Section 4

Powers and Duties of the Highway Commissioner (Assuming the County Highway Commissioner IS appointed by the County Executive or County Administrator...)

# Statutory Authority and Obligations

## *County Highway Commissioners*

- In counties with a county executive or county administrator, the county executive or county administrator appoints and supervises the county highway commissioner, not the county highway committee.
  - The appointment is subject to confirmation by the county board unless the board, by ordinance, elects to waive confirmation or unless the appointment is made under a civil service system competitive examination procedure.
- The county board must provide the commissioner with suitable offices and such assistants as are necessary for the proper performance of the commissioner's duties.

## Statutory Authority and Obligations County Highway Commissioners—Powers and Duties

Wis. Stat. § 83.01(7):

- The county highway commissioner has charge, *under the direction of the county highway committee (unless the commissioner was appointed by a county executive or county administrator)*, of the construction of highways built with county aid and the maintenance of all highways maintained by the county. Key: the county highway commissioner is NOT under the direction of the county highway committee if appointed. *See Wis. Stat. § 83.01(7)(a).*
- The county highway commissioner shall perform all duties *required by the county board and by the county highway committee (unless the commissioner was appointed by a county executive or county administrator)*, and shall do or cause to be done all necessary engineering and make all necessary examinations for the establishment, construction, improvement and maintenance of highways. Key: the county highway commissioner is NOT under the direction of the county highway committee if appointed. *See Wis. Stat. § 83.01(7)(b).*

## Statutory Authority and Obligations: Duties of the County Highway Commissioner (con't.)

- Complete, or cause to be completed, all necessary engineering and make all necessary examinations for the establishment, construction, improvement and maintenance of highways. *See Wis. Stat. § 83.01(7)(b).*
- Keep all county road machinery and tools properly maintained, repaired and stored, and make an annual report to the county board showing a full inventory of such machinery and tools. *See Wis. Stat. § 83.01(7)(c).*

## Statutory Authority and Obligations: Duties of the County Highway Commissioner (con't.)

- Make an annual report to WisDOT and to the county board. The report must include an itemized statement of all expenditures made from the county road and bridge fund during each annual period and estimate the amount of funds needed to properly maintain the county trunk highways in that county for the succeeding year. In addition, the report should include any other recommendations as the county highway commissioner deems necessary. *See Wis. Stat. § 83.01(7)(d).*
- Issue removal orders in the event of an encroachment on any county trunk highway or state trunk highway. *See Wis. Stat. § 83.01(7)(f); see also Affeldt v. Green Lake County, 2011 WI 56, 335 Wis.2d 104, 116-117, 808 N.W. 2d 56 (recognizing that the county highway commissioner is granted authority by the state to remove any encroachment on a county trunk highway).*
- Compile and maintain a record of the laying out, alteration, or discontinuance of all highways in the county outside the limits of cities and villages, consistent with the form prescribed by WisDOT. *See Wis. Stat. § 83.01(7)(g).*



# Questions??

PAYMENT AUTHORIZATION SIGNATURE PAGE

Batch No: 22-000218

Payment Total: \$ 48,531.97

Check Issuance Date: 02/11/2022

Highway Commissioner                      Jon Johnson

\_\_\_\_\_

Assistant Commissioner                      Brian Spilde

*Brian Spilde*  
\_\_\_\_\_

Fiscal Supervisor                              Vacant

\_\_\_\_\_

Accountant                                      Vacant

\_\_\_\_\_

HIGHWAY COMMITTEE

Steve Chilson, Chair

\_\_\_\_\_

Carl Anton, Vice-Chair

\_\_\_\_\_

Nathan Anderson

\_\_\_\_\_

Judy Gatlin

\_\_\_\_\_

Nathan Otto

\_\_\_\_\_



Report Date 02/08/22 11:20 AM  
 For Batches 000218 -000218 , - , -  
 Payment Request Date 02/11/22

**County of Eau Claire**  
 Payment Request Edit

Vendor No	Vendor Name	Check No	Date To Pay	Mailing Name	Address	App. Status	Claim No	PO No	Line	Invoice No	Acc Ctl 1099	Description	Batch-Trans-Line	Asset Tag	Amount	Liquidated
<b>125717</b>	<b>BIG RIG TOWING &amp; TRANSPORT LLC</b>															
02	C 02/11/22			BIG RIG TOWING & TRANSPORT LLC	6111 CHUCK LN EAU CLAIRE WI 54703											
				30813								1 NA TRUCK TOW	22000218	8 1	306.25	306.25
					Cash: 22-701-00-11110-000-000-000-000-000										306.25	306.25
					REPAIR PARTS-EXTERNAL LABOR(CLRNG ACCT)							TREASURER'S CASH/ HIGHWAY				
															<b>Invoice Total:</b>	<b>306.25</b>
															<b>Check Total:</b>	<b>656.25</b>
															<b>Vendor Total:</b>	<b>656.25</b>
<b>39608</b>	<b>CHIPPEWA VALLEY ENERGY</b>															
02	C 02/11/22			CHIPPEWA VALLEY ENERGY	PO BOX 837 EAU CLAIRE WI 547020837											
				U206G495								1 NA DIESEL	22000218	9 1	254.78	254.78
					Cash: 22-701-00-11110-000-000-000-000-000										254.78	254.78
					DIESEL							TREASURER'S CASH/ HIGHWAY				
															<b>Invoice Total:</b>	<b>254.78</b>
				U206G495								1 NA DIESEL	22000218	10 1	254.78	254.78
					Cash: 22-701-00-11110-000-000-000-000-000										254.78	254.78
					DIESEL							TREASURER'S CASH/ HIGHWAY				
															<b>Invoice Total:</b>	<b>254.78</b>
				U206G495								1 NA DIESEL	22000218	11 1	254.78	254.78
					Cash: 22-701-00-11110-000-000-000-000-000										254.78	254.78
					DIESEL							TREASURER'S CASH/ HIGHWAY				
															<b>Invoice Total:</b>	<b>254.78</b>
				U206G495								1 NA DIESEL	22000218	12 1	254.80	254.80
					Cash: 22-701-00-11110-000-000-000-000-000										254.80	254.80
					DIESEL							TREASURER'S CASH/ HIGHWAY				
															<b>Invoice Total:</b>	<b>254.80</b>
				U2074458								1 NA GASOLINE	22000218	13 1	3,882.81	3,882.81
					Cash: 22-701-00-11110-000-000-000-000-000										3,882.81	3,882.81
					GASOLINE							TREASURER'S CASH/ HIGHWAY				
															<b>Invoice Total:</b>	<b>3,882.81</b>
															<b>Check Total:</b>	<b>4,901.95</b>
															<b>Vendor Total:</b>	<b>4,901.95</b>
<b>54208</b>	<b>CINTAS CORPORATION NO 2</b>															
02	C 02/11/22			CINTAS LOC#16	PO BOX 650838 DALLAS TX 752650838											
				4108221003								1 NA TOWEL/MATS	22000218	14 1	19.23	19.23









Report Date 02/08/22 11:20 AM  
 For Batches 000218 -000218 , - , -  
 Payment Request Date 02/11/22

County of Eau Claire  
 Payment Request Edit

Vendor No	Vendor Name	Check No	Date To Pay	Mailing Name	Address	App. Status	Claim No	PO No	Line	Invoice No	Acc	Ctl	1099	Description	Batch-Trans-Line	Asset Tag	Amount	Liquidated	
471	FABICK CAT / FABCO																		
02	C 02/11/22			JFTCO INC	PO BOX 952121 ST LOUIS MO 631952121														
<b>Check Total:</b>																	<b>445.93</b>	<b>445.93</b>	
<b>Vendor Total:</b>																	<b>445.93</b>	<b>445.93</b>	
491	FASTENAL COMPANY																		
02	C 02/11/22			FASTENAL COMPANY	PO BOX 1286 WINONA MN 559871286														
				WIEAU307986										1 NA SAE THRU-HARD	22000218 35 1		28.46	28.46	
														Cash: 22-701-00-11110-000-000-000-000-000		28.46	28.46		
														SHOP/ REPAIR & MAINT SUPPLIES					
														TREASURER'S CASH/ HIGHWAY					
<b>Invoice Total:</b>																	<b>28.46</b>	<b>28.46</b>	
				WIEAU307987										1 NA PINHEX LAG	22000218 36 1		43.86	43.86	
														Cash: 22-701-00-11110-000-000-000-000-000		43.86	43.86		
														REPAIR ACCID DAMAGE/ROAD SUPPLIES					
														TREASURER'S CASH/ HIGHWAY					
<b>Invoice Total:</b>																	<b>43.86</b>	<b>43.86</b>	
				WIEAU308066										1 NA GLOVES	22000218 37 1		62.57	62.57	
														Cash: 22-701-00-11110-000-000-000-000-000		62.57	62.57		
														SHOP/ REPAIR & MAINT SUPPLIES					
														TREASURER'S CASH/ HIGHWAY					
<b>Invoice Total:</b>																	<b>62.57</b>	<b>62.57</b>	
				WIEAU308066										1 NA GLOVES	22000218 38 1		543.68	543.68	
														Cash: 22-701-00-11110-000-000-000-000-000		543.68	543.68		
														FIELD SMALL TOOLS/ ROADWAY SUPPLIES					
														TREASURER'S CASH/ HIGHWAY					
<b>Invoice Total:</b>																	<b>543.68</b>	<b>543.68</b>	
				WIEAU308123										1 NA T ROD	22000218 39 1		20.55	20.55	
														Cash: 22-701-00-11110-000-000-000-000-000		20.55	20.55		
														SHOP/ REPAIR & MAINT SUPPLIES					
														TREASURER'S CASH/ HIGHWAY					
<b>Invoice Total:</b>																	<b>20.55</b>	<b>20.55</b>	
				WIEAU308128										1 NA EYEWEAR/GLOVES	22000218 40 1		51.95	51.95	
														Cash: 22-701-00-11110-000-000-000-000-000		51.95	51.95		
														FIELD SMALL TOOLS/ ROADWAY SUPPLIES					
														TREASURER'S CASH/ HIGHWAY					
<b>Invoice Total:</b>																	<b>51.95</b>	<b>51.95</b>	
				WIEAU308128										1 NA EYEWEAR/GLOVES	22000218 41 1		85.47	85.47	
														Cash: 22-701-00-11110-000-000-000-000-000		85.47	85.47		
														SHOP/ REPAIR & MAINT SUPPLIES					
														TREASURER'S CASH/ HIGHWAY					
<b>Invoice Total:</b>																	<b>85.47</b>	<b>85.47</b>	
				WIEAU308129										1 NA EYEWEAR/VEST	22000218 42 1		70.35	70.35	



Report Date 02/08/22 11:20 AM  
 For Batches 000218 -000218 , - , -  
 Payment Request Date 02/11/22

County of Eau Claire  
 Payment Request Edit

Page No 8  
 FPEDT01B

Vendor No	Vendor Name	Check No	Date To Pay	Mailing Name	Address	App. Status	Claim No	PO No	Line	Invoice No	Acc Ctl 1099	Description	Batch-Trans-Line	Asset Tag	Amount	Liquidated		
<b>117765</b>	<b>HARTLAND LUBRICANTS &amp; CHEMICALS</b>																	
02	C 02/11/22	HARTLAND LUBRICANTS & CHEMICALS		PO BOX 809 ONALASKA WI 546500809														
		SI228842		1 NA TERSUS DEF									22000218	48	1	274.50	274.50	
				Cash: 22-701-00-16133-000-000-000-000-000												274.50	274.50	
				DIESEL ENGINE FLUID	TREASURER'S CASH/ HIGHWAY													
																<b>Invoice Total:</b>	<b>274.50</b>	<b>274.50</b>
		SI229146		1 NA TERSUS DEF									22000218	49	1	769.25	769.25	
				Cash: 22-701-00-16133-000-000-000-000-000												769.25	769.25	
				DIESEL ENGINE FLUID	TREASURER'S CASH/ HIGHWAY													
																<b>Invoice Total:</b>	<b>769.25</b>	<b>769.25</b>
																<b>Check Total:</b>	<b>1,043.75</b>	<b>1,043.75</b>
																<b>Vendor Total:</b>	<b>1,043.75</b>	<b>1,043.75</b>
<b>95125</b>	<b>HIGHWAY CONSTRUCTION PRODUCTS LLC</b>																	
02	C 02/11/22	HIGHWAY CONSTRUCTION PRODUCTS LLC		PO BOX 117 SPRING VALLEY WI 54767														
		9369		1 NA LINE POST/BEAM PANEL									22000218	50	1	12,399.00	12,399.00	
				Cash: 22-701-00-16133-000-000-000-000-000												12,399.00	12,399.00	
				REPAIR ACCID DAMAGE/ROAD SUPPLIES	TREASURER'S CASH/ HIGHWAY													
																<b>Invoice Total:</b>	<b>12,399.00</b>	<b>12,399.00</b>
		9376		1 NA THRIE BEAM PANEL									22000218	51	1	2,290.00	2,290.00	
				Cash: 22-701-00-16133-000-000-000-000-000												2,290.00	2,290.00	
				REPAIR ACCID DAMAGE/ROAD SUPPLIES	TREASURER'S CASH/ HIGHWAY													
																<b>Invoice Total:</b>	<b>2,290.00</b>	<b>2,290.00</b>
																<b>Check Total:</b>	<b>14,689.00</b>	<b>14,689.00</b>
																<b>Vendor Total:</b>	<b>14,689.00</b>	<b>14,689.00</b>
<b>1549</b>	<b>JOHN DEERE FINANCIAL</b>																	
02	C 02/11/22	JOHN DEERE FINANCIAL POWER PLAN		21310 NETWORK PL CHICAGO IL 606731213														
		2074389		1 NA CLAMPS/SOLENOID/SEAL/ORING									22000218	52	1	390.12	390.12	
				Cash: 22-701-00-16151-000-000-000-000-000												390.12	390.12	
				REPAIR PARTS-DIRECT CHARGE (CLRNG ACCT)	TREASURER'S CASH/ HIGHWAY													
																<b>Invoice Total:</b>	<b>390.12</b>	<b>390.12</b>
		2075171		1 NA BELT TRANSITIONER									22000218	53	1	216.30	216.30	
				Cash: 22-701-00-16151-000-000-000-000-000												216.30	216.30	
				REPAIR PARTS-DIRECT CHARGE (CLRNG ACCT)	TREASURER'S CASH/ HIGHWAY													
																<b>Invoice Total:</b>	<b>216.30</b>	<b>216.30</b>
		2077004		1 NA MCCOY/PP - NOZZLE HOLDER									22000218	54	1	73.09	73.09	

Report Date 02/08/22 11:20 AM  
 For Batches 000218 -000218 , - , -  
 Payment Request Date 02/11/22

County of Eau Claire  
 Payment Request Edit

Vendor No	Vendor Name	Check No	Date To Pay	Mailing Name	Address	App. Status	Claim No	PO No	Line	Invoice No	Acc Ctl 1099	Description	Batch-Trans-Line	Asset Tag	Amount	Liquidated	
<b>1549</b>	<b>JOHN DEERE FINANCIAL</b>																
02	C 02/11/22			JOHN DEERE FINANCIAL POWER PLAN	21310 NETWORK PL CHICAGO IL 606731213												
				2077004					1	NA	MCCOY/PP - NOZZLE HOLDER	22000218	54	1	73.09	73.09	
					Cash: 22-701-00-11110-000-000-000-000-000										73.09	73.09	
					REPAIR PARTS-DIRECT CHARGE (CLRNG ACCT)						TREASURER'S CASH/ HIGHWAY						
															<b>Invoice Total:</b>	<b>73.09</b>	<b>73.09</b>
				2078483					1	NA	MCCOY-SOLENOID	22000218	55	1	251.18	251.18	
					Cash: 22-701-00-11110-000-000-000-000-000										251.18	251.18	
					REPAIR PARTS-DIRECT CHARGE (CLRNG ACCT)						TREASURER'S CASH/ HIGHWAY						
															<b>Invoice Total:</b>	<b>251.18</b>	<b>251.18</b>
				2079402					1	NA	MCCOY - ELBOW FITTING	22000218	56	1	43.95	43.95	
					Cash: 22-701-00-11110-000-000-000-000-000										43.95	43.95	
					REPAIR PARTS-DIRECT CHARGE (CLRNG ACCT)						TREASURER'S CASH/ HIGHWAY						
															<b>Invoice Total:</b>	<b>43.95</b>	<b>43.95</b>
															<b>Check Total:</b>	<b>974.64</b>	<b>974.64</b>
															<b>Vendor Total:</b>	<b>974.64</b>	<b>974.64</b>
<b>35998</b>	<b>LARSON COMPANIES</b>																
02	C 02/11/22			LARSON COMPANIES	PO BOX 270710 MINNEAPOLIS MN 55427												
				5304250302					1	NA	WIPER BLADE SNOW 20 IN	22000218	57	1	68.90	68.90	
					Cash: 22-701-00-11110-000-000-000-000-000										68.90	68.90	
					REPAIR PARTS						TREASURER'S CASH/ HIGHWAY						
															<b>Invoice Total:</b>	<b>68.90</b>	<b>68.90</b>
				5304251543					1	NA	WIPER BLADE SNOW 20 IN	22000218	58	1	70.40	70.40	
					Cash: 22-701-00-11110-000-000-000-000-000										70.40	70.40	
					REPAIR PARTS						TREASURER'S CASH/ HIGHWAY						
															<b>Invoice Total:</b>	<b>70.40</b>	<b>70.40</b>
				5304254393					1	NA	FILTER OIL DUAL FLOW SPIN ON	22000218	59	1	25.77	25.77	
					Cash: 22-701-00-11110-000-000-000-000-000										25.77	25.77	
					REPAIR PARTS						TREASURER'S CASH/ HIGHWAY						
															<b>Invoice Total:</b>	<b>25.77</b>	<b>25.77</b>
				5304254693					1	NA	REMAN AD/IP CARTRIDGE/CORE	22000218	60	1	143.88	143.88	
					Cash: 22-701-00-11110-000-000-000-000-000										143.88	143.88	
					REPAIR PARTS						TREASURER'S CASH/ HIGHWAY						
															<b>Invoice Total:</b>	<b>143.88</b>	<b>143.88</b>
				5304254707					1	NA	BRACKET LICENSE LAMP	22000218	61	1	8.58	8.58	





**County of Eau Claire**  
 Payment Request Edit

Vendor No	Vendor Name				Address				App. Status		
Check No	Date To Pay	Mailing Name							Amount	Liquidated	
Claim No	PO No	Line	Invoice No	Acc	Ctl 1099	Description	Batch-Trans-Line	Asset Tag			
<b>35998</b>	<b>LARSON COMPANIES</b>										
02	C 02/11/22	LARSON COMPANIES				PO BOX 270710 MINNEAPOLIS MN 55427					
		5304255251		1	NA	MIRRON 8 INCH SS CONVEX	22000218 69	1	13.11	13.11	
22-701-00-16121-000-000-000-000						Cash: 22-701-00-11110-000-000-000-000-000			13.11	13.11	
REPAIR PARTS						TREASURER'S CASH/ HIGHWAY					
									<b>Invoice Total:</b>	<b>13.11</b>	<b>13.11</b>
		5304255385		1	NA	COALESCING CARTRIDGE	22000218 70	1	60.38	60.38	
22-701-00-16121-000-000-000-000						Cash: 22-701-00-11110-000-000-000-000-000			60.38	60.38	
REPAIR PARTS						TREASURER'S CASH/ HIGHWAY					
									<b>Invoice Total:</b>	<b>60.38</b>	<b>60.38</b>
		5304255471		1	NA	ELEMENT CABIN AIR	22000218 71	1	9.88	9.88	
22-701-00-16121-000-000-000-000						Cash: 22-701-00-11110-000-000-000-000-000			9.88	9.88	
REPAIR PARTS						TREASURER'S CASH/ HIGHWAY					
									<b>Invoice Total:</b>	<b>9.88</b>	<b>9.88</b>
		5304255482		1	NA	FILTER OIL FULL FLOW SPIN ON	22000218 72	1	7.50	7.50	
22-701-00-16121-000-000-000-000						Cash: 22-701-00-11110-000-000-000-000-000			7.50	7.50	
REPAIR PARTS						TREASURER'S CASH/ HIGHWAY					
									<b>Invoice Total:</b>	<b>7.50</b>	<b>7.50</b>
		5304255688		1	NA	CORE RETURN	22000218 73	1	-62.50	-62.50	
22-701-00-16121-000-000-000-000						Cash: 22-701-00-11110-000-000-000-000-000			-62.50	-62.50	
REPAIR PARTS						TREASURER'S CASH/ HIGHWAY					
									<b>Invoice Total:</b>	<b>-62.50</b>	<b>-62.50</b>
		5304255790		1	NA	FILTER FUEL	22000218 74	1	13.70	13.70	
22-701-00-16121-000-000-000-000						Cash: 22-701-00-11110-000-000-000-000-000			13.70	13.70	
REPAIR PARTS						TREASURER'S CASH/ HIGHWAY					
									<b>Invoice Total:</b>	<b>13.70</b>	<b>13.70</b>
									<b>Check Total:</b>	<b>551.52</b>	<b>551.52</b>
									<b>Vendor Total:</b>	<b>551.52</b>	<b>551.52</b>
<b>13196</b>	<b>LF GEORGE INC</b>										
02	C 02/11/22	L F GEORGE INC				PO BOX 22 OCONOMOWOC WI 530667209					
		I035517		1	NA	BOBCAT PARTS	22000218 75	1	122.43	122.43	
22-701-00-16151-000-000-000-000						Cash: 22-701-00-11110-000-000-000-000-000			122.43	122.43	
REPAIR PARTS-DIRECT CHARGE (CLRNG ACCT)						TREASURER'S CASH/ HIGHWAY					
									<b>Invoice Total:</b>	<b>122.43</b>	<b>122.43</b>
		I035525		1	NA	BOBCAT PARTS/RETURN	22000218 76	1	-45.84	-45.84	

Report Date 02/08/22 11:20 AM  
 For Batches 000218 -000218 , - , -  
 Payment Request Date 02/11/22

**County of Eau Claire**  
 Payment Request Edit

Page No 12  
 FPEDT01B

Vendor No	Vendor Name	Check No	Date To Pay	Mailing Name	Address	App. Status	Claim No	PO No	Line	Invoice No	Acc	Ctl	1099	Description	Batch-Trans-Line	Asset Tag	Amount	Liquidated		
<b>13196</b>	<b>LF GEORGE INC</b>																			
02	C 02/11/22	L F GEORGE INC		PO BOX 22	OCONOMOWOC WI 530667209															
				I035525			1	NA	BOBCAT PARTS/RETURN	22000218	76	1					-45.84	-45.84		
					Cash: 22-701-00-11110-000-000-000-000-000												-45.84	-45.84		
					REPAIR PARTS-DIRECT CHARGE (CLRNG ACCT)				TREASURER'S CASH/ HIGHWAY											
																		<b>Invoice Total:</b>	<b>-45.84</b>	<b>-45.84</b>
				I035657			1	NA	BOBCAT AND OTHER PARTS	22000218	77	1					621.54	621.54		
					Cash: 22-701-00-11110-000-000-000-000-000												621.54	621.54		
					REPAIR PARTS-DIRECT CHARGE (CLRNG ACCT)				TREASURER'S CASH/ HIGHWAY											
																		<b>Invoice Total:</b>	<b>621.54</b>	<b>621.54</b>
				I035713			1	NA	BOBCAT PARTS	22000218	78	1					261.82	261.82		
					Cash: 22-701-00-11110-000-000-000-000-000												261.82	261.82		
					REPAIR PARTS-DIRECT CHARGE (CLRNG ACCT)				TREASURER'S CASH/ HIGHWAY											
																		<b>Invoice Total:</b>	<b>261.82</b>	<b>261.82</b>
				I035783			1	NA	ARM WIPER	22000218	79	1					83.10	83.10		
					Cash: 22-701-00-11110-000-000-000-000-000												83.10	83.10		
					REPAIR PARTS-DIRECT CHARGE (CLRNG ACCT)				TREASURER'S CASH/ HIGHWAY											
																		<b>Invoice Total:</b>	<b>83.10</b>	<b>83.10</b>
				I035785			1	NA	ARM WIPER	22000218	80	1					78.40	78.40		
					Cash: 22-701-00-11110-000-000-000-000-000												78.40	78.40		
					REPAIR PARTS-DIRECT CHARGE (CLRNG ACCT)				TREASURER'S CASH/ HIGHWAY											
																		<b>Invoice Total:</b>	<b>78.40</b>	<b>78.40</b>
				LC15447			1	NA	CHIPPER RENTAL 12/28/21-1/24/22	22000218	101	1					4,800.00	4,800.00		
					Cash: 22-701-00-11110-000-000-000-000-000												4,800.00	4,800.00		
					CTHS MAINT/ ROADWAY SUPPLIES				TREASURER'S CASH/ HIGHWAY											
																		<b>Invoice Total:</b>	<b>4,800.00</b>	<b>4,800.00</b>
																		<b>Check Total:</b>	<b>5,921.45</b>	<b>5,921.45</b>
																		<b>Vendor Total:</b>	<b>5,921.45</b>	<b>5,921.45</b>
<b>147168</b>	<b>LINDSTROM EQUIPMENT INC</b>																			
02	C 02/11/22	LINDSTROM EQUIPMENT INC		S927 COUNTY RD J	MONDOVI WI 54755															
				IB63530			1	NA	OIL RESERVOIR	22000218	81	1					28.29	28.29		
					Cash: 22-701-00-11110-000-000-000-000-000												28.29	28.29		
					REPAIR PARTS-DIRECT CHARGE (CLRNG ACCT)				TREASURER'S CASH/ HIGHWAY											
																		<b>Invoice Total:</b>	<b>28.29</b>	<b>28.29</b>
																		<b>Check Total:</b>	<b>28.29</b>	<b>28.29</b>



Report Date 02/08/22 11:20 AM  
 For Batches 000218 -000218 ,  
 Payment Request Date 02/11/22

County of Eau Claire  
 Payment Request Edit

Vendor No	Vendor Name	Address	App. Status	Amount	Liquidated
Check No	Date To Pay	Mailing Name			
Claim No	PO No	Line Invoice No	Acc Ctl 1099 Description	Batch-Trans-Line Asset Tag	
<b>88145</b>	<b>NUSS TRUCK &amp; EQUIPMENT</b>				
02	C 02/11/22	NUSS TRUCK & EQUIPMENT	PO BOX 6699 ROCHESTER MN 55903		
		592970	1 NA REFINISH PARTS	22000218 87 1	
				<b>Invoice Total:</b>	<b>385.77</b>
					<b>385.77</b>
				1,155.06	1,155.06
22-701-31-53313-370-000-000-000-000			Cash: 22-701-00-11110-000-000-000-000-000		1,155.06
CTHS ROAD CONST/ ROADWAY SUPPLIES			TREASURER'S CASH/ HIGHWAY		1,155.06
				<b>Invoice Total:</b>	<b>1,155.06</b>
				<b>Check Total:</b>	<b>1,540.83</b>
				<b>Vendor Total:</b>	<b>1,540.83</b>
<b>54933</b>	<b>O'REILLY AUTOMOTIVE INC</b>				
02	C 02/11/22	O'REILLY AUTOMOTIVE INC	PO BOX 9464 SPRINGFIELD MO 658019464		
		1648-220272	1 NA BATTERY	22000218 91 1	
					137.84
					137.84
22-701-00-16151-000-000-000-000-000			Cash: 22-701-00-11110-000-000-000-000-000		137.84
REPAIR PARTS-DIRECT CHARGE (CLRNG ACCT)			TREASURER'S CASH/ HIGHWAY		137.84
				<b>Invoice Total:</b>	<b>137.84</b>
				<b>Check Total:</b>	<b>137.84</b>
				<b>Vendor Total:</b>	<b>137.84</b>
<b>786</b>	<b>OAK RIDGE CHEMICAL INC</b>				
02	C 02/11/22	OAK RIDGE CHEMICAL INC	2214 SEYMOUR RD EAU CLAIRE WI 54703		
		075057	1 NA POWERED VEHICLE WASH	22000218 89 1	
					179.67
					179.67
22-701-31-53310-370-000-000-000-000			Cash: 22-701-00-11110-000-000-000-000-000		179.67
CTHS MAINT/ ROADWAY SUPPLIES			TREASURER'S CASH/ HIGHWAY		179.67
				<b>Invoice Total:</b>	<b>179.67</b>
				<b>Check Total:</b>	<b>179.67</b>
				<b>Vendor Total:</b>	<b>179.67</b>
<b>43168</b>	<b>OIL EQUIPMENT CO INC</b>				
02	C 02/11/22	OIL EQUIPMENT CO INC	4701 LIEN RD MADISON WI 53704		
		0302760-IN	1 NA SWIVEL/BREAKAWAY	22000218 90 1	
					180.94
					180.94
22-701-31-53270-370-000-000-000-000			Cash: 22-701-00-11110-000-000-000-000-000		180.94
BLDING & GRD OPS/RDWAY SUPP			TREASURER'S CASH/ HIGHWAY		180.94
				<b>Invoice Total:</b>	<b>180.94</b>
				<b>Check Total:</b>	<b>180.94</b>
				<b>Vendor Total:</b>	<b>180.94</b>
<b>4036</b>	<b>RIVER STATES TRUCK &amp; TRAILER INC</b>				
02	C 02/11/22	RIVER STATES TRUCK & TRAILER INC	ACCOUNTING DEPT3959 N KINNEY COULEE RD LACROSSE WI 54601		
		2561197	1 NA STRUT	22000218 92 1	
					152.48
					152.48

Report Date 02/08/22 11:20 AM  
 For Batches 000218 -000218 , - , -  
 Payment Request Date 02/11/22

County of Eau Claire  
 Payment Request Edit

Vendor No	Vendor Name	Address	App. Status	Amount	Liquidated
Check No	Date To Pay	Mailing Name			
Claim No	PO No	Line Invoice No	Acc Ctl 1099 Description	Batch-Trans-Line Asset Tag	
<b>4036</b>	<b>RIVER STATES TRUCK &amp; TRAILER INC</b>				
02	C 02/11/22	RIVER STATES TRUCK & TRAILER INC	ACCOUNTING DEPT3959 N KINNEY COULEE RD LACROSSE WI 54601		
		2561197	1 NA STRUT	22000218 92 1	152.48 152.48
22-701-00-16151-000-000-000-000-000			Cash: 22-701-00-11110-000-000-000-000-000		152.48 152.48
REPAIR PARTS-DIRECT CHARGE (CLRNG ACCT)			TREASURER'S CASH/ HIGHWAY		
			<b>Invoice Total:</b>		<b>152.48 152.48</b>
		CM2561048	1 NA BRACKET RETURN	22000218 93 1	-147.71 -147.71
22-701-00-16151-000-000-000-000-000			Cash: 22-701-00-11110-000-000-000-000-000		-147.71 -147.71
REPAIR PARTS-DIRECT CHARGE (CLRNG ACCT)			TREASURER'S CASH/ HIGHWAY		
			<b>Invoice Total:</b>		<b>-147.71 -147.71</b>
			<b>Check Total:</b>		<b>4.77 4.77</b>
			<b>Vendor Total:</b>		<b>4.77 4.77</b>
<b>3042</b>	<b>RONCO ENGINEERING SALES CO INC</b>				
02	C 02/11/22	RONCO ENGINEERING SALES INC	PO BOX 8891755 RONCO AVE WINONA MN 559870889		
		3270819	1 NA DUST PLUG	22000218 94 1	20.37 20.37
22-701-00-16121-000-000-000-000-000			Cash: 22-701-00-11110-000-000-000-000-000		20.37 20.37
REPAIR PARTS			TREASURER'S CASH/ HIGHWAY		
			<b>Invoice Total:</b>		<b>20.37 20.37</b>
		3272265	1 NA HOSE BARB/BALL VALVE	22000218 95 1	124.08 124.08
22-701-00-16151-000-000-000-000-000			Cash: 22-701-00-11110-000-000-000-000-000		124.08 124.08
REPAIR PARTS-DIRECT CHARGE (CLRNG ACCT)			TREASURER'S CASH/ HIGHWAY		
			<b>Invoice Total:</b>		<b>124.08 124.08</b>
		3272545	1 NA PLUG/CAP	22000218 96 1	12.80 12.80
22-701-00-16151-000-000-000-000-000			Cash: 22-701-00-11110-000-000-000-000-000		12.80 12.80
REPAIR PARTS-DIRECT CHARGE (CLRNG ACCT)			TREASURER'S CASH/ HIGHWAY		
			<b>Invoice Total:</b>		<b>12.80 12.80</b>
			<b>Check Total:</b>		<b>157.25 157.25</b>
			<b>Vendor Total:</b>		<b>157.25 157.25</b>
<b>1327</b>	<b>SAM'S AUTO SUPPLY</b>				
02	C 02/11/22	SAM'S AUTO SUPPLY	1167 VERNON ST ALTOONA WI 54720		
		367329	1 NA SEAM SEALER GRAY	22000218 97 1	11.50 11.50
22-701-00-16151-000-000-000-000-000			Cash: 22-701-00-11110-000-000-000-000-000		11.50 11.50
REPAIR PARTS-DIRECT CHARGE (CLRNG ACCT)			TREASURER'S CASH/ HIGHWAY		
			<b>Invoice Total:</b>		<b>11.50 11.50</b>
			<b>Check Total:</b>		<b>11.50 11.50</b>

Vendor No	Vendor Name	Check No	Date To Pay	Mailing Name	Address	App. Status	Claim No	PO No	Line	Invoice No	Acc Ctl 1099	Description	Batch-Trans-Line	Asset Tag	Amount	Liquidated
<b>1327</b>	<b>SAM'S AUTO SUPPLY</b>															
<b>Vendor Total:</b>															<b>11.50</b>	<b>11.50</b>
<b>4227</b>	<b>SICALCO LTD</b>															
02	C 02/11/22	SICALCO LTD			522 CHESTNUT STE GB HINSDALE IL 60521											
		72864										1 NA CALCIUM CHLORIDE	22000218 98 1		4,013.70	4,013.70
					Cash: 22-701-00-11110-000-000-000-000-000										4,013.70	4,013.70
					STHS WINT MAINT/ROAD SUP											
<b>Invoice Total:</b>															<b>4,013.70</b>	<b>4,013.70</b>
<b>Check Total:</b>															<b>4,013.70</b>	<b>4,013.70</b>
<b>Vendor Total:</b>															<b>4,013.70</b>	<b>4,013.70</b>
<b>7495</b>	<b>UNIVERSAL TRUCK EQUIPMENT</b>															
02	C 02/11/22	UNIVERSAL TRUCK EQUIPMENT			N 15921 SCHUBERT ROAD GALESVILLE WI 54630											
		56932										1 NA TOE CYLINDER	22000218 99 1		780.50	780.50
					Cash: 22-701-00-11110-000-000-000-000-000										780.50	780.50
					REPAIR PARTS											
<b>Invoice Total:</b>															<b>780.50</b>	<b>780.50</b>
<b>Check Total:</b>															<b>780.50</b>	<b>780.50</b>
<b>Vendor Total:</b>															<b>780.50</b>	<b>780.50</b>
<b>14788</b>	<b>WE ENERGIES</b>															
02	C 02/11/22	WE ENERGIES			PO BOX 6042 CAROL STREAM IL 601976042											
		4012130496-012722										1 NA UTILITY-GAS AUGUSTA SHOP	22000218 100 1		1,107.62	1,107.62
					Cash: 22-701-00-11110-000-000-000-000-000										1,107.62	1,107.62
					BLDING & GRD OPS/ UTILITY SERVICE											
<b>Invoice Total:</b>															<b>1,107.62</b>	<b>1,107.62</b>
<b>Check Total:</b>															<b>1,107.62</b>	<b>1,107.62</b>
<b>Vendor Total:</b>															<b>1,107.62</b>	<b>1,107.62</b>
<b>Total Manual Checks:</b>															<b>.00</b>	<b>Total Liquidated: 48,531.97</b>
<b>Total Computer Checks:</b>															<b>48,531.97</b>	
<b>Total ACH Checks:</b>															<b>.00</b>	
<b>Total Electronic Checks:</b>															<b>.00</b>	
<b>Total Other Checks:</b>															<b>.00</b>	
<b>Total Unposted Payment Requests:</b>															<b>48,531.97</b>	
<b>Total Posted Payment Requests:</b>															<b>.00</b>	
<b>Grand Total:</b>															<b>48,531.97</b>	
<b>Estimated No. of Checks:</b>															<b>29</b>	

Report Date 02/08/22 11:20 AM  
For Batches 000218 -000218 , - , -  
Payment Request Date 02/11/22

**County of Eau Claire**  
Payment Request Edit

Page No 17  
FPEDT01B

---

Vendor No	Vendor Name									
Check No	Date To Pay	Mailing Name		Address				App. Status		
Claim No	PO No	Line	Invoice No	Acc Ctl 1099	Description	Batch-Trans-Line	Asset Tag	Amount	Liquidated	
		701			48,531.97			48,531.97		
		<b>Total of all Funds:</b>			48,531.97			48,531.97		
	<u>Bank No</u>				<u>Bank Total</u>					
	02				48,531.97					

PAYMENT AUTHORIZATION SIGNATURE PAGE

Batch No: 21-002130

Payment Total: \$50,124.03

Check Issuance Date: 02/11/2022

Highway Commissioner Jon Johnson

\_\_\_\_\_

Assistant Commissioner Brian Spilde

*Brian Spilde*  
\_\_\_\_\_

Fiscal Supervisor Vacant

\_\_\_\_\_

Accountant Vacant

\_\_\_\_\_

HIGHWAY COMMITTEE

Steve Chilson, Chair

\_\_\_\_\_

Carl Anton, Vice-Chair

\_\_\_\_\_

Nathan Anderson

\_\_\_\_\_

Judy Gatlin

\_\_\_\_\_

Nathan Otto

\_\_\_\_\_



Report Date 02/08/22 11:21 AM  
 For Batches 002130 -002130 , - , -  
 Payment Request Date 02/11/22

County of Eau Claire  
 Payment Request Edit

Page No 1  
 FPEDT01B

Vendor No	Vendor Name	Address	App. Status	Amount	Liquidated		
Check No	Date To Pay	Mailing Name					
Claim No	PO No	Line Invoice No	Acc Ctl 1099 Description	Batch-Trans-Line	Asset Tag	Amount	Liquidated
<b>118940</b>	<b>CBS SQUARED INC</b>						
02	C 02/11/22	CBS SQUARED INC	770 TECHNOLOGY WAY CHIPPEWA FALLS WI 54729				
		9263	1 NA HIGHWAY FACILITY DEVELOPMENT	21002130	1 1	22,714.00	22,714.00
21-701-31-59999-370-000-000-000-000			Cash: 21-701-00-11110-000-000-000-000-000			22,714.00	22,714.00
NEW HWY FACILITY/ROADWAY SUPPLIES			TREASURER'S CASH/ HIGHWAY				
			<b>Invoice Total:</b>			<b>22,714.00</b>	<b>22,714.00</b>
			<b>Check Total:</b>			<b>22,714.00</b>	<b>22,714.00</b>
			<b>Vendor Total:</b>			<b>22,714.00</b>	<b>22,714.00</b>
<b>110868</b>	<b>JEWELL ASSOCIATES ENGINEERS INC</b>						
02	C 02/11/22	JEWELL ASSOCIATES ENGINEERS INC	560 SUNRISE DR SPRING GREEN WI 53588				
		12810	1 NA CTH T CORRIDOR LAYOUT AND MAPPIN21002130	2	1	914.03	914.03
21-701-31-53312-370-000-000-000-000			Cash: 21-701-00-11110-000-000-000-000-000			914.03	914.03
CTHS ROAD CONST/Roadway Supplies			TREASURER'S CASH/ HIGHWAY				
			<b>Invoice Total:</b>			<b>914.03</b>	<b>914.03</b>
			<b>Check Total:</b>				
			<b>Vendor Total:</b>			<b>914.03</b>	<b>914.03</b>
		12848	1 NA CTH M SCL - LANGE ST	21002130	3 1	8,339.45	8,339.45
21-701-31-53312-370-000-000-000-000			Cash: 21-701-00-11110-000-000-000-000-000			8,339.45	8,339.45
CTHS ROAD CONST/Roadway Supplies			TREASURER'S CASH/ HIGHWAY				
			<b>Invoice Total:</b>			<b>8,339.45</b>	<b>8,339.45</b>
			<b>Check Total:</b>				
			<b>Vendor Total:</b>			<b>8,339.45</b>	<b>8,339.45</b>
		12850	1 NA CTH G DESIGN ENGINEERING SVCS	21002130	4 1	1,429.11	1,429.11
21-701-31-53312-370-000-000-000-000			Cash: 21-701-00-11110-000-000-000-000-000			1,429.11	1,429.11
CTHS ROAD CONST/Roadway Supplies			TREASURER'S CASH/ HIGHWAY				
			<b>Invoice Total:</b>			<b>1,429.11</b>	<b>1,429.11</b>
			<b>Check Total:</b>			<b>10,682.59</b>	<b>10,682.59</b>
			<b>Vendor Total:</b>			<b>10,682.59</b>	<b>10,682.59</b>
<b>4931</b>	<b>NORTHWEST ENTERPRISES INC</b>						
02	C 02/11/22	NORTHWEST ENTERPRISES INC	5100 RYDER RD EAU CLAIRE WI 54701				
		INV94620	1 NA R1721 DOM	21002130	5 1	259.19	259.19
21-701-00-16151-000-000-000-000-000			Cash: 21-701-00-11110-000-000-000-000-000			259.19	259.19
REPAIR PARTS-DIRECT CHARGE (CLRNG ACCT)			TREASURER'S CASH/ HIGHWAY				
			<b>Invoice Total:</b>			<b>259.19</b>	<b>259.19</b>
			<b>Check Total:</b>			<b>259.19</b>	<b>259.19</b>
			<b>Vendor Total:</b>			<b>259.19</b>	<b>259.19</b>
<b>1532</b>	<b>TRU LOCK &amp; SECURITY INC</b>						
02	C 02/11/22	TRU LOCK & SECURITY	2080 TRUAX BLVD EAU CLAIRE WI 54703				
		0520188730	1 NA KEY RINGS/TOOL CABINET KEYS	21002130	6 1	6.05	6.05
21-701-31-53230-350-000-000-000-000			Cash: 21-701-00-11110-000-000-000-000-000			6.05	6.05

Report Date 02/08/22 11:21 AM  
 For Batches 002130 -002130 , - , -  
 Payment Request Date 02/11/22

County of Eau Claire  
 Payment Request Edit

Vendor No	Vendor Name	Check No	Date To Pay	Mailing Name	Address	App. Status	Claim No	PO No	Line	Invoice No	Acc Ctl 1099	Description	Batch-Trans-Line	Asset Tag	Amount	Liquidated	
<b>1532</b>	<b>TRU LOCK &amp; SECURITY INC</b>																
02	C 02/11/22			TRU LOCK & SECURITY	2080 TRUAX BLVD EAU CLAIRE WI 54703												
				0520188730								1 NA KEY RINGS/TOOL CABINET KEYS	21002130	6 1	6.05	6.05	
															6.05	6.05	
				SHOP/ REPAIR & MAINT SUPPLIES	TREASURER'S CASH/ HIGHWAY												
															<b>Invoice Total:</b>	<b>6.05</b>	<b>6.05</b>
															<b>Check Total:</b>	<b>6.05</b>	<b>6.05</b>
															<b>Vendor Total:</b>	<b>6.05</b>	<b>6.05</b>
<b>161166</b>	<b>WESTWOOD PROFESSIONAL SERVICES INC</b>																
02	C 02/11/22			WESTWOOD PROFESSIONAL SERVICES INC	PO BOX 856650 MINNEAPOLIS MN 554856650												
				3220100043								1 NA ENGINEERING SERVICES	21002130	7 1	472.00	472.00	
															472.00	472.00	
				21-701-31-53120-350-000-000-000-000	Cash: 21-701-00-11110-000-000-000-000-000										472.00	472.00	
				ENGINEERING SVC/ROADWAY SUPPLY	TREASURER'S CASH/ HIGHWAY												
															<b>Invoice Total:</b>	<b>472.00</b>	<b>472.00</b>
															<b>Check Total:</b>	<b>472.00</b>	<b>472.00</b>
															<b>Vendor Total:</b>	<b>472.00</b>	<b>472.00</b>
<b>2017</b>	<b>WISCONSIN, STATE OF</b>																
02	C 02/11/22			STATE OF WISCONSIN	DEPT OF TRANSPORTATIONFINANCIAL OPERATIONS SECTIONPO BOX 7366 MADISON WI 537077366												
				395-0000247250								1 NA CTH AF STH 27 ROADWAY/BRIDGE	21002130	8 1	4,960.61	4,960.61	
															4,960.61	4,960.61	
				21-701-31-53313-370-000-000-000-000	Cash: 21-701-00-11110-000-000-000-000-000										4,960.61	4,960.61	
				CTHS ROAD CONST/ ROADWAY SUPPLIES	TREASURER'S CASH/ HIGHWAY												
															<b>Invoice Total:</b>	<b>4,960.61</b>	<b>4,960.61</b>
															<b>Check Total:</b>	<b>4,960.61</b>	<b>4,960.61</b>
															<b>Vendor Total:</b>	<b>4,960.61</b>	<b>4,960.61</b>
<b>5637</b>	<b>XCEL ENERGY</b>																
02	C 02/11/22			XCEL ENERGY	ATTN: ACCOUNTS PAYABLEPO BOX 9477 MINNEAPOLIS MN 554849477												
				763769016								1 NA GAS/ELECTRIC BILL	21002130	9 1	11,029.59	11,029.59	
															11,029.59	11,029.59	
				21-701-31-53270-220-000-000-000-000	Cash: 21-701-00-11110-000-000-000-000-000										11,029.59	11,029.59	
				BLDING & GRD OPS/ UTILITY SERVICE	TREASURER'S CASH/ HIGHWAY												
															<b>Invoice Total:</b>	<b>11,029.59</b>	<b>11,029.59</b>
															<b>Check Total:</b>	<b>11,029.59</b>	<b>11,029.59</b>
															<b>Vendor Total:</b>	<b>11,029.59</b>	<b>11,029.59</b>

Report Date 02/08/22 11:21 AM  
 For Batches 002130 -002130 , - , -  
 Payment Request Date 02/11/22

**County of Eau Claire**  
 Payment Request Edit

Page No 3  
 FPEDT01B

Vendor No	Vendor Name			Address			App. Status		
Check No	Date To Pay	Mailing Name						Amount	Liquidated
Claim No	PO No	Line	Invoice No	Acc Ctl 1099	Description	Batch-Trans-Line	Asset Tag		

					Total Manual Checks:		.00	<b>Total Liquidated:</b>	<b>50,124.03</b>
					Total Computer Checks:		50,124.03		
					Total ACH Checks:		.00		
					Total Electronic Checks:		.00		
					Total Other Checks:		.00		
					Total Unposted Payment Requests:		50,124.03		
					Total Posted Payment Requests:		.00		
					Grand Total:		50,124.03		
					Estimated No. of Checks:		7		

Fund:	Amount	Liquidated
701	50,124.03	50,124.03
<b>Total of all Funds:</b>	<u>50,124.03</u>	<u>50,124.03</u>

<u>Bank No</u>	<u>Bank Total</u>
02	50,124.03

**AGENDA  
ITEM #10**

**PAYMENT AUTHORIZATION SIGNATURE PAGE**

Batch No: 22-000290

Payment Total: \$86,950.62

Check Issuance Date: 02/18/2022

Highway Commissioner                      Jon Johnson                      \_\_\_\_\_

Assistant Commissioner                      Brian Spilde                      

Fiscal Supervisor                              Vacant                              \_\_\_\_\_

Accountant                                      Vacant                              \_\_\_\_\_

**HIGHWAY COMMITTEE**

Steve Chilson, Chair                              \_\_\_\_\_

Carl Anton, Vice-Chair                              \_\_\_\_\_

Nathan Anderson                                      \_\_\_\_\_

Judy Gatlin    \_\_\_\_\_

Nathan Otto    \_\_\_\_\_

Report Date 02/15/22 03:58 PM  
 For Batches 000290 -000290 , - , -  
 Payment Request Date 02/18/22

**County of Eau Claire**  
 Payment Request Edit

Page No 1  
 FPEDT01B

Vendor No	Vendor Name			Address			App. Status			
Check No	Date To Pay	Mailing Name						Amount	Liquidated	
Claim No	PO No	Line	Invoice No	Acc	Ctl 1099	Description	Batch-Trans-Line	Asset Tag		
<b>5485</b>	<b>ALL SEASON TIRE CO</b>									
02	C 02/18/22	ALL SEASON TIRE			1102 MENOMONIE ST EAU CLAIRE WI 54703					
		355643		1	NA	TIRE RETREAD	22000290	1 1	1,475.00 1,475.00	
22-701-00-16122-000-000-000-000						Cash: 22-701-00-11110-000-000-000-000			1,475.00 1,475.00	
TIRES						TREASURER'S CASH/ HIGHWAY				
								<b>Invoice Total:</b>	<b>1,475.00</b>	<b>1,475.00</b>
								<b>Check Total:</b>	<b>1,475.00</b>	<b>1,475.00</b>
								<b>Vendor Total:</b>	<b>1,475.00</b>	<b>1,475.00</b>
<b>2342</b>	<b>AUTO VALUE EAU CLAIRE/APH STORES INC</b>									
02	C 02/18/22	AUTO VALUE EAU CLAIRE			3235 E HAMILTON AVE EAU CLAIRE WI 54701					
		80115506		1	NA	STANDARD HALOGEN	22000290	2 1	26.18 26.18	
22-701-00-16151-000-000-000-000						Cash: 22-701-00-11110-000-000-000-000			26.18 26.18	
REPAIR PARTS-DIRECT CHARGE (CLRNG ACCT)						TREASURER'S CASH/ HIGHWAY				
								<b>Invoice Total:</b>	<b>26.18</b>	<b>26.18</b>
		80115548		1	NA	LOOM/CLIP ACCESSORY	22000290	3 1	19.00 19.00	
22-701-00-16151-000-000-000-000						Cash: 22-701-00-11110-000-000-000-000			19.00 19.00	
REPAIR PARTS-DIRECT CHARGE (CLRNG ACCT)						TREASURER'S CASH/ HIGHWAY				
								<b>Invoice Total:</b>	<b>19.00</b>	<b>19.00</b>
		80115665		1	NA	BULK BATTERY/WELDING	22000290	4 1	68.25 68.25	
22-701-00-16151-000-000-000-000						Cash: 22-701-00-11110-000-000-000-000			68.25 68.25	
REPAIR PARTS-DIRECT CHARGE (CLRNG ACCT)						TREASURER'S CASH/ HIGHWAY				
								<b>Invoice Total:</b>	<b>68.25</b>	<b>68.25</b>
		80115682		1	NA	WINSHIELD WASHER PU	22000290	5 1	16.09 16.09	
22-701-00-16151-000-000-000-000						Cash: 22-701-00-11110-000-000-000-000			16.09 16.09	
REPAIR PARTS-DIRECT CHARGE (CLRNG ACCT)						TREASURER'S CASH/ HIGHWAY				
								<b>Invoice Total:</b>	<b>16.09</b>	<b>16.09</b>
		80115684		1	NA	WINSHIELD HOSE	22000290	6 1	23.51 23.51	
22-701-00-16151-000-000-000-000						Cash: 22-701-00-11110-000-000-000-000			23.51 23.51	
REPAIR PARTS-DIRECT CHARGE (CLRNG ACCT)						TREASURER'S CASH/ HIGHWAY				
								<b>Invoice Total:</b>	<b>23.51</b>	<b>23.51</b>
		80115965		1	NA	BATTERY	22000290	7 1	179.79 179.79	
22-701-00-16151-000-000-000-000						Cash: 22-701-00-11110-000-000-000-000			179.79 179.79	
REPAIR PARTS-DIRECT CHARGE (CLRNG ACCT)						TREASURER'S CASH/ HIGHWAY				
								<b>Invoice Total:</b>	<b>179.79</b>	<b>179.79</b>
		80116016		1	NA	RELAY	22000290	8 1	19.38 19.38	



Report Date 02/15/22 03:58 PM  
 For Batches 000290 -000290 , - , -  
 Payment Request Date 02/18/22

**County of Eau Claire**  
 Payment Request Edit

Page No 3  
 FPEDT01B

Vendor No	Vendor Name	Address	App. Status	Amount	Liquidated
Check No	Date To Pay	Mailing Name			
Claim No	PO No	Line Invoice No	Acc Ctl 1099 Description	Batch-Trans-Line Asset Tag	
<b>54208</b>	<b>CINTAS CORPORATION NO 2</b>				
02	C 02/18/22	CINTAS LOC#16			
		4109580558	1 NA TOWELS/MATS	22000290 13 1	19.23 19.23
			Cash: 22-701-00-11110-000-000-000-000-000		19.23 19.23
			BLDING & GRD OPS/RDWAY SUPP	TREASURER'S CASH/ HIGHWAY	
				<b>Invoice Total:</b>	<b>19.23 19.23</b>
		4109580558	1 NA TOWELS/MATS	22000290 14 1	40.90 40.90
			Cash: 22-701-00-11110-000-000-000-000-000		40.90 40.90
			FIELD SMALL TOOLS/ ROADWAY SUPPLIES	TREASURER'S CASH/ HIGHWAY	
				<b>Invoice Total:</b>	<b>40.90 40.90</b>
		4109585378	1 NA SCRAPER/MAT	22000290 15 1	9.48 9.48
			Cash: 22-701-00-11110-000-000-000-000-000		9.48 9.48
			BLDING & GRD OPS/RDWAY SUPP	TREASURER'S CASH/ HIGHWAY	
				<b>Invoice Total:</b>	<b>9.48 9.48</b>
		4109585378	1 NA FIELD UNIFORMS	22000290 16 1	83.15 83.15
			Cash: 22-701-00-11110-000-000-000-000-000		83.15 83.15
			FIELD SMALL TOOLS/ ROADWAY SUPPLIES	TREASURER'S CASH/ HIGHWAY	
				<b>Invoice Total:</b>	<b>83.15 83.15</b>
		4109585727	1 NA SCRAPER/TOWEL/MAT	22000290 17 1	144.89 144.89
			Cash: 22-701-00-11110-000-000-000-000-000		144.89 144.89
			BLDING & GRD OPS/RDWAY SUPP	TREASURER'S CASH/ HIGHWAY	
				<b>Invoice Total:</b>	<b>144.89 144.89</b>
		4109585727	1 NA SHOP UNIFORMS	22000290 18 1	73.77 73.77
			Cash: 22-701-00-11110-000-000-000-000-000		73.77 73.77
			SHOP/ REPAIR & MAINT SUPPLIES	TREASURER'S CASH/ HIGHWAY	
				<b>Invoice Total:</b>	<b>73.77 73.77</b>
		4109585727	1 NA FIELD UNIFORMS	22000290 19 1	230.91 230.91
			Cash: 22-701-00-11110-000-000-000-000-000		230.91 230.91
			FIELD SMALL TOOLS/ ROADWAY SUPPLIES	TREASURER'S CASH/ HIGHWAY	
				<b>Invoice Total:</b>	<b>230.91 230.91</b>
				<b>Check Total:</b>	<b>602.33 602.33</b>
				<b>Vendor Total:</b>	<b>602.33 602.33</b>
<b>860</b>	<b>CULLIGAN STERLING WATER</b>				
02	C 02/18/22	CULLIGAN			
		307X08113306	1 NA WATER COOLER RENTAL FEB 2022	22000290 20 1	119.90 119.90

Report Date 02/15/22 03:58 PM  
 For Batches 000290 -000290 , - , -  
 Payment Request Date 02/18/22

County of Eau Claire  
 Payment Request Edit

Vendor No	Vendor Name	Check No	Date To Pay	Mailing Name	Address	App. Status	Claim No	PO No	Line	Invoice No	Acc	Ctl	1099	Description	Batch-Trans-Line	Asset Tag	Amount	Liquidated		
<b>860</b>	<b>CULLIGAN STERLING WATER</b>																			
02	C 02/18/22			CULLIGAN	1928 TRUAX BLVD EAU CLAIRE WI 547039613															
				307X08113306										1 NA WATER COOLER RENTAL FEB 2022	22000290	20	1	119.90	119.90	
				22-701-31-53270-220-000-000-000-000	Cash: 22-701-00-11110-000-000-000-000-000													119.90	119.90	
				BLDING & GRD OPS/ UTILITY SERVICE	TREASURER'S CASH/ HIGHWAY															
																		<b>Invoice Total:</b>	<b>119.90</b>	<b>119.90</b>
																		<b>Check Total:</b>	<b>119.90</b>	<b>119.90</b>
																		<b>Vendor Total:</b>	<b>119.90</b>	<b>119.90</b>
<b>33375</b>	<b>EAU CLAIRE FORD</b>																			
02	C 02/18/22			EAU CLAIRE FORD	2909 LORCH AVE EAU CLAIRE WI 54701															
				194875										1 NA SHOP UBOLT	22000290	21	1	64.14	64.14	
				22-701-00-16151-000-000-000-000-000	Cash: 22-701-00-11110-000-000-000-000-000													64.14	64.14	
				REPAIR PARTS-DIRECT CHARGE (CLRNG ACCT)	TREASURER'S CASH/ HIGHWAY															
																		<b>Invoice Total:</b>	<b>64.14</b>	<b>64.14</b>
				194929										1 NA WHOL PLATE	22000290	22	1	28.42	28.42	
				22-701-00-16151-000-000-000-000-000	Cash: 22-701-00-11110-000-000-000-000-000													28.42	28.42	
				REPAIR PARTS-DIRECT CHARGE (CLRNG ACCT)	TREASURER'S CASH/ HIGHWAY															
																		<b>Invoice Total:</b>	<b>28.42</b>	<b>28.42</b>
																		<b>Check Total:</b>	<b>92.56</b>	<b>92.56</b>
																		<b>Vendor Total:</b>	<b>92.56</b>	<b>92.56</b>
<b>491</b>	<b>FASTENAL COMPANY</b>																			
02	C 02/18/22			FASTENAL COMPANY	PO BOX 1286 WINONA MN 559871286															
				WIEAU308317										1 NA EYEWEAR	22000290	23	1	24.44	24.44	
				22-701-31-53230-350-000-000-000-000	Cash: 22-701-00-11110-000-000-000-000-000													24.44	24.44	
				SHOP/ REPAIR & MAINT SUPPLIES	TREASURER'S CASH/ HIGHWAY															
																		<b>Invoice Total:</b>	<b>24.44</b>	<b>24.44</b>
				WIEAU308317										1 NA EYEWEAR	22000290	24	1	443.34	443.34	
				22-701-00-16121-000-000-000-000-000	Cash: 22-701-00-11110-000-000-000-000-000													443.34	443.34	
				REPAIR PARTS	TREASURER'S CASH/ HIGHWAY															
																		<b>Invoice Total:</b>	<b>443.34</b>	<b>443.34</b>
				WIEAU308341										1 NA EYEWEAR/VEST	22000290	25	1	64.91	64.91	
				22-701-31-53220-370-000-000-000-000	Cash: 22-701-00-11110-000-000-000-000-000													64.91	64.91	
				FIELD SMALL TOOLS/ ROADWAY SUPPLIES	TREASURER'S CASH/ HIGHWAY															
																		<b>Invoice Total:</b>	<b>64.91</b>	<b>64.91</b>
				WIEAU308341										1 NA EYEWEAR/VEST	22000290	26	1	93.70	93.70	





Report Date 02/15/22 03:58 PM  
 For Batches 000290 -000290 , - , -  
 Payment Request Date 02/18/22

County of Eau Claire  
 Payment Request Edit

Vendor No	Vendor Name	Address	App. Status	Amount	Liquidated
Check No	Date To Pay	Mailing Name			
Claim No	PO No	Line Invoice No	Acc Ctl 1099 Description	Batch-Trans-Line Asset Tag	
<b>110868</b>	<b>JEWELL ASSOCIATES ENGINEERS INC</b>				
02	C 02/18/22	JEWELL ASSOCIATES ENGINEERS INC	560 SUNRISE DR SPRING GREEN WI 53588		
		12872	1 NA CTH T CORRIDOR 1/1/22-1/28/22	22000290 31 1	1,155.01 1,155.01
			Cash: 22-701-00-11110-000-000-000-000-000		1,155.01 1,155.01
			CTHS ROAD CONST/Roadway Supplies	TREASURER'S CASH/ HIGHWAY	
				<b>Invoice Total:</b>	<b>1,155.01 1,155.01</b>
		12939	1 NA CTH M 1/1/22-1/28/22	22000290 32 1	4,169.73 4,169.73
			Cash: 22-701-00-11110-000-000-000-000-000		4,169.73 4,169.73
			CTHS ROAD CONST/Roadway Supplies	TREASURER'S CASH/ HIGHWAY	
				<b>Invoice Total:</b>	<b>4,169.73 4,169.73</b>
		12941	1 NA CTH G 1/1/22-1/28/22	22000290 33 1	14,668.16 14,668.16
			Cash: 22-701-00-11110-000-000-000-000-000		14,668.16 14,668.16
			CTHS ROAD CONST/Roadway Supplies	TREASURER'S CASH/ HIGHWAY	
				<b>Invoice Total:</b>	<b>14,668.16 14,668.16</b>
				<b>Check Total:</b>	<b>19,992.90 19,992.90</b>
				<b>Vendor Total:</b>	<b>19,992.90 19,992.90</b>
<b>13196</b>	<b>LF GEORGE INC</b>				
02	C 02/18/22	L F GEORGE INC	PO BOX 22 OCONOMOWOC WI 530667209		
		I035713A	1 NA BOBCAT PARTS	22000290 34 1	76.38 76.38
			Cash: 22-701-00-11110-000-000-000-000-000		76.38 76.38
			REPAIR PARTS-DIRECT CHARGE (CLRNG ACCT)	TREASURER'S CASH/ HIGHWAY	
				<b>Invoice Total:</b>	<b>76.38 76.38</b>
		I035791	1 NA BOBCAT PARTS	22000290 35 1	53.54 53.54
			Cash: 22-701-00-11110-000-000-000-000-000		53.54 53.54
			REPAIR PARTS-DIRECT CHARGE (CLRNG ACCT)	TREASURER'S CASH/ HIGHWAY	
				<b>Invoice Total:</b>	<b>53.54 53.54</b>
		L005094	1 NA BOBCAT RENTAL 12/23/21-1/23/22	22000290 36 1	5,175.00 5,175.00
			Cash: 22-701-00-11110-000-000-000-000-000		5,175.00 5,175.00
			CTHS MAINT/ ROADWAY SUPPLIES	TREASURER'S CASH/ HIGHWAY	
				<b>Invoice Total:</b>	<b>5,175.00 5,175.00</b>
				<b>Check Total:</b>	<b>5,304.92 5,304.92</b>
				<b>Vendor Total:</b>	<b>5,304.92 5,304.92</b>
<b>147168</b>	<b>LINDSTROM EQUIPMENT INC</b>				
02	C 02/18/22	LINDSTROM EQUIPMENT INC	S927 COUNTY RD J MONDOVI WI 54755		
		IB63507	1 NA PARTS	22000290 37 1	391.58 391.58

Report Date 02/15/22 03:58 PM  
 For Batches 000290 -000290 , - , -  
 Payment Request Date 02/18/22

County of Eau Claire  
 Payment Request Edit

Vendor No	Vendor Name	Address	App. Status	Amount	Liquidated
Check No	Date To Pay	Mailing Name			
Claim No	PO No	Line Invoice No	Acc Ctl 1099 Description	Batch-Trans-Line Asset Tag	
<b>147168</b>	<b>LINDSTROM EQUIPMENT INC</b>				
02	C 02/18/22	LINDSTROM EQUIPMENT INC	S927 COUNTY RD J MONDOVI WI 54755		
		IB63507	1 NA PARTS	22000290 37 1	391.58 391.58
			Cash: 22-701-00-11110-000-000-000-000-000		391.58 391.58
			REPAIR PARTS-DIRECT CHARGE (CLRNG ACCT) TREASURER'S CASH/ HIGHWAY		
			<b>Invoice Total:</b>	<b>391.58</b>	<b>391.58</b>
			<b>Check Total:</b>	<b>391.58</b>	<b>391.58</b>
			<b>Vendor Total:</b>	<b>391.58</b>	<b>391.58</b>
<b>56979</b>	<b>MID STATE TRUCK SERVICE INC</b>				
02	C 02/18/22	MID STATE TRUCK SERVICE INC	PO BOX 1150 MARSHFIELD WI 54449		
		668589	1 NA REPAIR PARTS AND LABOR	22000290 38 1	1,269.00 1,269.00
			Cash: 22-701-00-11110-000-000-000-000-000		1,269.00 1,269.00
			REPAIR PARTS-EXTERNAL LABOR(CLRNG ACCT) TREASURER'S CASH/ HIGHWAY		
			<b>Invoice Total:</b>	<b>1,269.00</b>	<b>1,269.00</b>
			<b>Check Total:</b>	<b>4,588.81</b>	<b>4,588.81</b>
			<b>Vendor Total:</b>	<b>5,857.81</b>	<b>5,857.81</b>
		668589	1 NA REPAIR PARTS AND LABOR	22000290 39 1	4,588.81 4,588.81
			Cash: 22-701-00-11110-000-000-000-000-000		4,588.81 4,588.81
			REPAIR PARTS-EXTERNAL PARTS/OTHER(CLRNG) TREASURER'S CASH/ HIGHWAY		
			<b>Invoice Total:</b>	<b>4,588.81</b>	<b>4,588.81</b>
			<b>Check Total:</b>	<b>5,857.81</b>	<b>5,857.81</b>
			<b>Vendor Total:</b>	<b>5,857.81</b>	<b>5,857.81</b>
<b>56308</b>	<b>MISSISSIPPI WELDERS SUPPLY CO INC</b>				
02	C 02/18/22	MISSISSIPPI WELDERS SUPPLY CO INC	PO BOX 1036 WINONA MN 559877036		
		3688161	1 NA FLUSH COPPER NOZZLE	22000290 43 1	26.79 26.79
			Cash: 22-701-00-11110-000-000-000-000-000		26.79 26.79
			SHOP/ REPAIR & MAINT SUPPLIES TREASURER'S CASH/ HIGHWAY		
			<b>Invoice Total:</b>	<b>26.79</b>	<b>26.79</b>
			<b>Check Total:</b>	<b>52.00</b>	<b>52.00</b>
			<b>Vendor Total:</b>	<b>52.00</b>	<b>52.00</b>
		3688178	1 NA FLEX DISC	22000290 44 1	52.00 52.00
			Cash: 22-701-00-11110-000-000-000-000-000		52.00 52.00
			SHOP/ REPAIR & MAINT SUPPLIES TREASURER'S CASH/ HIGHWAY		
			<b>Invoice Total:</b>	<b>52.00</b>	<b>52.00</b>
			<b>Check Total:</b>	<b>169.83</b>	<b>169.83</b>
			<b>Vendor Total:</b>	<b>169.83</b>	<b>169.83</b>
		3692466	1 NA ENDURO FLEX DISC	22000290 45 1	169.83 169.83
			Cash: 22-701-00-11110-000-000-000-000-000		169.83 169.83
			SHOP/ REPAIR & MAINT SUPPLIES TREASURER'S CASH/ HIGHWAY		
			<b>Invoice Total:</b>	<b>169.83</b>	<b>169.83</b>
			<b>Check Total:</b>	<b>100.00</b>	<b>100.00</b>
			<b>Vendor Total:</b>	<b>100.00</b>	<b>100.00</b>
		3696658	1 NA MOLDED NEMA PLUGS	22000290 46 1	100.00 100.00

Report Date 02/15/22 03:58 PM  
 For Batches 000290 -000290 , - , -  
 Payment Request Date 02/18/22

County of Eau Claire  
 Payment Request Edit

Vendor No	Vendor Name				Address			App. Status		
Check No	Date To Pay	Mailing Name								
Claim No	PO No	Line	Invoice No	Acc	Ctl 1099	Description	Batch-Trans-Line	Asset Tag	Amount	Liquidated
<b>56308</b>	<b>MISSISSIPPI WELDERS SUPPLY CO INC</b>									
02	C 02/18/22	MISSISSIPPI WELDERS SUPPLY CO INC				PO BOX 1036 WINONA MN 559877036				
		3696658		1	NA	MOLDED NEMA PLUGS	22000290 46 1		100.00	100.00
						Cash: 22-701-00-11110-000-000-000-000-000			100.00	100.00
						SHOP/ REPAIR & MAINT SUPPLIES			TREASURER'S CASH/ HIGHWAY	
									<b>Invoice Total:</b>	<b>100.00</b>
		3703932		1	NA	COMPRESSED GAS	22000290 47 1		27.50	27.50
						Cash: 22-701-00-11110-000-000-000-000-000			27.50	27.50
						SHOP/ REPAIR & MAINT SUPPLIES			TREASURER'S CASH/ HIGHWAY	
									<b>Invoice Total:</b>	<b>27.50</b>
		449933		1	NA	OXYGEN AND ACETYLENE	22000290 40 1		92.67	92.67
						Cash: 22-701-00-11110-000-000-000-000-000			92.67	92.67
						SHOP/ REPAIR & MAINT SUPPLIES			TREASURER'S CASH/ HIGHWAY	
									<b>Invoice Total:</b>	<b>92.67</b>
		449934		1	NA	PROPANE	22000290 41 1		169.69	169.69
						Cash: 22-701-00-11110-000-000-000-000-000			169.69	169.69
						SHOP/ REPAIR & MAINT SUPPLIES			TREASURER'S CASH/ HIGHWAY	
									<b>Invoice Total:</b>	<b>169.69</b>
		449948		1	NA	ACETYLENE	22000290 42 1		141.13	141.13
						Cash: 22-701-00-11110-000-000-000-000-000			141.13	141.13
						SHOP/ REPAIR & MAINT SUPPLIES			TREASURER'S CASH/ HIGHWAY	
									<b>Invoice Total:</b>	<b>141.13</b>
									<b>Check Total:</b>	<b>779.61</b>
									<b>Vendor Total:</b>	<b>779.61</b>
<b>88145</b>	<b>NUSS TRUCK &amp; EQUIPMENT</b>									
02	C 02/18/22	NUSS TRUCK & EQUIPMENT				PO BOX 6699 ROCHESTER MN 55903				
		5290807P		1	NA	CART/FILTER/LUBE	22000290 48 1		61.04	61.04
						Cash: 22-701-00-11110-000-000-000-000-000			61.04	61.04
						REPAIR PARTS			TREASURER'S CASH/ HIGHWAY	
									<b>Invoice Total:</b>	<b>61.04</b>
		5290852P		1	NA	FILTER	22000290 49 1		130.86	130.86
						Cash: 22-701-00-11110-000-000-000-000-000			130.86	130.86
						REPAIR PARTS			TREASURER'S CASH/ HIGHWAY	
									<b>Invoice Total:</b>	<b>130.86</b>
		5290927P		1	NA	PUMP	22000290 50 1		32.71	32.71

Report Date 02/15/22 03:58 PM  
 For Batches 000290 -000290 , - , -  
 Payment Request Date 02/18/22

County of Eau Claire  
 Payment Request Edit

Vendor No	Vendor Name	Check No	Date To Pay	Mailing Name	Address	App. Status	Claim No	PO No	Line	Invoice No	Acc	Ctl	1099	Description	Batch-Trans-Line	Asset Tag	Amount	Liquidated	
<b>88145</b>	<b>NUSS TRUCK &amp; EQUIPMENT</b>																		
02	C 02/18/22			NUSS TRUCK & EQUIPMENT	PO BOX 6699 ROCHESTER MN 55903														
				5290927P					1	NA PUMP				22000290	50	1	32.71	32.71	
				22-701-00-16151-000-000-000-000-000	Cash: 22-701-00-11110-000-000-000-000-000												32.71	32.71	
				REPAIR PARTS-DIRECT CHARGE (CLRNG ACCT)	TREASURER'S CASH/ HIGHWAY														
																	<b>Invoice Total:</b>	<b>32.71</b>	<b>32.71</b>
				5290964P					1	NA BRAKE CHAMBER				22000290	51	1	152.62	152.62	
				22-701-00-16151-000-000-000-000-000	Cash: 22-701-00-11110-000-000-000-000-000												152.62	152.62	
				REPAIR PARTS-DIRECT CHARGE (CLRNG ACCT)	TREASURER'S CASH/ HIGHWAY														
																	<b>Invoice Total:</b>	<b>152.62</b>	<b>152.62</b>
				5291120P					1	NA WEATHERSTRIP				22000290	52	1	86.18	86.18	
				22-701-00-16151-000-000-000-000-000	Cash: 22-701-00-11110-000-000-000-000-000												86.18	86.18	
				REPAIR PARTS-DIRECT CHARGE (CLRNG ACCT)	TREASURER'S CASH/ HIGHWAY														
																	<b>Invoice Total:</b>	<b>86.18</b>	<b>86.18</b>
				5291141P					1	NA SENSOR				22000290	53	1	231.39	231.39	
				22-701-00-16151-000-000-000-000-000	Cash: 22-701-00-11110-000-000-000-000-000												231.39	231.39	
				REPAIR PARTS-DIRECT CHARGE (CLRNG ACCT)	TREASURER'S CASH/ HIGHWAY														
																	<b>Invoice Total:</b>	<b>231.39</b>	<b>231.39</b>
				5291147P					1	NA SENSOR				22000290	54	1	231.39	231.39	
				22-701-00-16151-000-000-000-000-000	Cash: 22-701-00-11110-000-000-000-000-000												231.39	231.39	
				REPAIR PARTS-DIRECT CHARGE (CLRNG ACCT)	TREASURER'S CASH/ HIGHWAY														
																	<b>Invoice Total:</b>	<b>231.39</b>	<b>231.39</b>
				CM5290852P					1	NA FILTER RETURN				22000290	55	1	-130.86	-130.86	
				22-701-00-16121-000-000-000-000-000	Cash: 22-701-00-11110-000-000-000-000-000												-130.86	-130.86	
				REPAIR PARTS	TREASURER'S CASH/ HIGHWAY														
																	<b>Invoice Total:</b>	<b>-130.86</b>	<b>-130.86</b>
				CM5290964P					1	NA BRAKE CHAMBER RETURN				22000290	56	1	-138.00	-138.00	
				22-701-00-16151-000-000-000-000-000	Cash: 22-701-00-11110-000-000-000-000-000												-138.00	-138.00	
				REPAIR PARTS-DIRECT CHARGE (CLRNG ACCT)	TREASURER'S CASH/ HIGHWAY														
																	<b>Invoice Total:</b>	<b>-138.00</b>	<b>-138.00</b>
																	<b>Check Total:</b>	<b>657.33</b>	<b>657.33</b>
																	<b>Vendor Total:</b>	<b>657.33</b>	<b>657.33</b>

1144 OVERHEAD DOOR CO OF THE CHIPPEWA VALLEY  
 02 C 02/18/22 OVERHEAD DOOR CO OF THE

CHIPPEWA VALLEY INC4901 LYLE LNPO BOX 1083 EAU  
 CLAIRE WI 547021083

Report Date 02/15/22 03:58 PM  
 For Batches 000290 -000290 , - , -  
 Payment Request Date 02/18/22

County of Eau Claire  
 Payment Request Edit

Page No 10  
 FPEDT01B

Vendor No	Vendor Name	Address	App. Status	Amount	Liquidated
Check No	Date To Pay	Mailing Name			
Claim No	PO No	Line Invoice No	Acc Ctl 1099 Description	Batch-Trans-Line Asset Tag	
<b>1144</b>	<b>OVERHEAD DOOR CO OF THE CHIPPEWA VALLEY</b>				
02	C 02/18/22	OVERHEAD DOOR CO OF THE	CHIPPEWA VALLEY INC4901 LYLE LNPO BOX 1083 EAU CLAIRE WI 547021083		
		67518	1 NA LABOR TO TIGHTEN CHAIN	22000290 57 1	95.00 95.00
			Cash: 22-701-00-11110-000-000-000-000-000		95.00 95.00
			BLDING & GRD OPS/RDWAY SUPP	TREASURER'S CASH/ HIGHWAY	
				<b>Invoice Total:</b>	<b>95.00 95.00</b>
		67560	1 NA REPLACED BOTTOM SEAL	22000290 58 1	248.50 248.50
			Cash: 22-701-00-11110-000-000-000-000-000		248.50 248.50
			BLDING & GRD OPS/RDWAY SUPP	TREASURER'S CASH/ HIGHWAY	
				<b>Invoice Total:</b>	<b>248.50 248.50</b>
				<b>Check Total:</b>	<b>343.50 343.50</b>
				<b>Vendor Total:</b>	<b>343.50 343.50</b>
<b>98558</b>	<b>PRECISE MRM LLC</b>				
02	C 02/18/22	PRECISE MRM LLC	501 E CLIFF RD STE 100 BURNSVILLE MN 553371674		
		200-1035140	1 NA FLAT DATA PLAN US WITH NAF	22000290 59 1	918.00 918.00
			Cash: 22-701-00-11110-000-000-000-000-000		918.00 918.00
			REPAIR ACCID DAMAGE/ROAD SUPPLIES	TREASURER'S CASH/ HIGHWAY	
				<b>Invoice Total:</b>	<b>918.00 918.00</b>
		200-1035214	1 NA UPGRADED UNIT	22000290 60 1	50.00 50.00
			Cash: 22-701-00-11110-000-000-000-000-000		50.00 50.00
			STHS WINT MAINT/ROAD SUP	TREASURER'S CASH/ HIGHWAY	
				<b>Invoice Total:</b>	<b>50.00 50.00</b>
				<b>Check Total:</b>	<b>968.00 968.00</b>
				<b>Vendor Total:</b>	<b>968.00 968.00</b>
<b>61581</b>	<b>QUALITY PROPANE &amp; FUELS</b>				
02	C 02/18/22	QUALITY PROPANE & FUELS	PO BOX 986511 BOSTON MA 022986511		
		1505930741	1 NA PROPANE - FOSTER SHOP	22000290 61 1	2,695.25 2,695.25
			Cash: 22-701-00-11110-000-000-000-000-000		2,695.25 2,695.25
			BLDING & GRD OPS/ UTILITY SERVICE	TREASURER'S CASH/ HIGHWAY	
				<b>Invoice Total:</b>	<b>2,695.25 2,695.25</b>
				<b>Check Total:</b>	<b>2,695.25 2,695.25</b>
				<b>Vendor Total:</b>	<b>2,695.25 2,695.25</b>
<b>4036</b>	<b>RIVER STATES TRUCK &amp; TRAILER INC</b>				
02	C 02/18/22	RIVER STATES TRUCK & TRAILER INC	ACCOUNTING DEPT3959 N KINNEY COULEE RD LACROSSE WI 54601		
		218521	1 NA SOCKET/TUBE/LABOR	22000290 62 1	934.85 934.85



Report Date 02/15/22 03:58 PM  
 For Batches 000290 -000290 , - , -  
 Payment Request Date 02/18/22

County of Eau Claire  
 Payment Request Edit

Page No 12  
 FPEDT01B

Vendor No	Vendor Name	Check No	Date To Pay	Mailing Name	Address	App. Status	Claim No	PO No	Line	Invoice No	Acc	Ctl	1099	Description	Batch-Trans-Line	Asset Tag	Amount	Liquidated	
<b>3042</b>	<b>RONCO ENGINEERING SALES CO INC</b>																		
02	C 02/18/22			RONCO ENGINEERING SALES INC	PO BOX 8891755 RONCO AVE WINONA MN 559870889														
				3272790					1	NA PARTS				22000290	69	1	137.24	137.24	
					Cash: 22-701-00-11110-000-000-000-000-000												137.24	137.24	
					TREASURER'S CASH/ HIGHWAY														
																	<b>Invoice Total:</b>	<b>137.24</b>	<b>137.24</b>
				3272856					1	NA PARTS				22000290	70	1	20.52	20.52	
					Cash: 22-701-00-11110-000-000-000-000-000												20.52	20.52	
					TREASURER'S CASH/ HIGHWAY														
																	<b>Invoice Total:</b>	<b>20.52</b>	<b>20.52</b>
																	<b>Check Total:</b>	<b>157.76</b>	<b>157.76</b>
																	<b>Vendor Total:</b>	<b>157.76</b>	<b>157.76</b>
<b>4227</b>	<b>SICALCO LTD</b>																		
02	C 02/18/22			SICALCO LTD	522 CHESTNUT STE GB HINSDALE IL 60521														
				72960					1	NA CALCIUM CHLORIDE				22000290	71	1	3,955.05	3,955.05	
					Cash: 22-701-00-11110-000-000-000-000-000												3,955.05	3,955.05	
					TREASURER'S CASH/ HIGHWAY														
																	<b>Invoice Total:</b>	<b>3,955.05</b>	<b>3,955.05</b>
																	<b>Check Total:</b>	<b>3,955.05</b>	<b>3,955.05</b>
																	<b>Vendor Total:</b>	<b>3,955.05</b>	<b>3,955.05</b>
<b>29904</b>	<b>STEEL TOWNE</b>																		
02	C 02/18/22			STEEL TOWNE	N7102 STATE RD 40 ELK MOUND WI 54739														
				1092093					1	NA FLASH				22000290	72	1	311.98	311.98	
					Cash: 22-701-00-11110-000-000-000-000-000												311.98	311.98	
					TREASURER'S CASH/ HIGHWAY														
																	<b>Invoice Total:</b>	<b>311.98</b>	<b>311.98</b>
				1092093					1	NA FLASH				22000290	73	1	201.77	201.77	
					Cash: 22-701-00-11110-000-000-000-000-000												201.77	201.77	
					TREASURER'S CASH/ HIGHWAY														
																	<b>Invoice Total:</b>	<b>201.77</b>	<b>201.77</b>
				1092093					1	NA FLASH				22000290	74	1	201.77	201.77	
					Cash: 22-701-00-11110-000-000-000-000-000												201.77	201.77	
					TREASURER'S CASH/ HIGHWAY														
																	<b>Invoice Total:</b>	<b>201.77</b>	<b>201.77</b>
				1092140					1	NA HR ANG				22000290	75	1	274.38	274.38	



Report Date 02/15/22 03:58 PM  
 For Batches 000290 - 000290 , - , -  
 Payment Request Date 02/18/22

**County of Eau Claire**  
 Payment Request Edit

Page No 13  
 FPEDT01B

Vendor No	Vendor Name					Address			App. Status		
Check No	Date To Pay	Mailing Name									
Claim No	PO No	Line	Invoice No	Acc	Ctl	1099	Description	Batch-Trans-Line	Asset Tag	Amount	Liquidated
<b>29904</b>	<b>STEEL TOWNE</b>										
02	C 02/18/22	STEEL TOWNE					N7102 STATE RD 40 ELK MOUND WI 54739				
		1092140		1	NA	HR ANG		22000290	75 1	274.38	274.38
							Cash: 22-701-00-11110-000-000-000-000-000			274.38	274.38
							REPAIR PARTS-DIRECT CHARGE (CLRNG ACCT) TREASURER'S CASH/ HIGHWAY				
										<b>Invoice Total:</b>	<b>274.38</b>
		1092141		1	NA	PLATE TYPE B		22000290	76 1	177.23	177.23
							Cash: 22-701-00-11110-000-000-000-000-000			177.23	177.23
							SHOP/ REPAIR & MAINT SUPPLIES TREASURER'S CASH/ HIGHWAY				
										<b>Invoice Total:</b>	<b>177.23</b>
										<b>Check Total:</b>	<b>1,167.13</b>
										<b>Vendor Total:</b>	<b>1,167.13</b>
<b>7495</b>	<b>UNIVERSAL TRUCK EQUIPMENT</b>										
02	C 02/18/22	UNIVERSAL TRUCK EQUIPMENT					N 15921 SCHUBERT ROAD GALESVILLE WI 54630				
		57027		1	NA	REAR PURSH BAR ASSEMBLY		22000290	77 1	597.18	597.18
							Cash: 22-701-00-11110-000-000-000-000-000			597.18	597.18
							REPAIR PARTS TREASURER'S CASH/ HIGHWAY				
										<b>Invoice Total:</b>	<b>597.18</b>
		57028		1	NA	SUPER LED		22000290	78 1	372.00	372.00
							Cash: 22-701-00-11110-000-000-000-000-000			372.00	372.00
							REPAIR PARTS-DIRECT CHARGE (CLRNG ACCT) TREASURER'S CASH/ HIGHWAY				
										<b>Invoice Total:</b>	<b>372.00</b>
		57054		1	NA	PREWET FLOW METER		22000290	79 1	803.95	803.95
							Cash: 22-701-00-11110-000-000-000-000-000			803.95	803.95
							REPAIR PARTS TREASURER'S CASH/ HIGHWAY				
										<b>Invoice Total:</b>	<b>803.95</b>
		57079		1	NA	MAIN WING BOLT ASSY		22000290	80 1	796.50	796.50
							Cash: 22-701-00-11110-000-000-000-000-000			796.50	796.50
							REPAIR PARTS TREASURER'S CASH/ HIGHWAY				
										<b>Invoice Total:</b>	<b>796.50</b>
		57080		1	NA	SPINNER MOTOR		22000290	81 1	824.55	824.55
							Cash: 22-701-00-11110-000-000-000-000-000			824.55	824.55
							REPAIR PARTS TREASURER'S CASH/ HIGHWAY				
										<b>Invoice Total:</b>	<b>824.55</b>
		57108		1	NA	LIFT CYLINDER		22000290	82 1	1,007.85	1,007.85

Report Date 02/15/22 03:58 PM  
 For Batches 000290 -000290 , - , -  
 Payment Request Date 02/18/22

County of Eau Claire  
 Payment Request Edit

Vendor No	Vendor Name	Address	App. Status	Amount	Liquidated
Check No	Date To Pay	Mailing Name			
Claim No	PO No	Line Invoice No	Acc Ctl 1099 Description	Batch-Trans-Line Asset Tag	
<b>7495</b>	<b>UNIVERSAL TRUCK EQUIPMENT</b>				
02	C 02/18/22	UNIVERSAL TRUCK EQUIPMENT	N 15921 SCHUBERT ROAD GALESVILLE WI 54630		
		57108	1 NA LIFT CYLINDER	22000290 82 1	1,007.85 1,007.85
22-701-00-16121-000-000-000-000			Cash: 22-701-00-11110-000-000-000-000		1,007.85 1,007.85
REPAIR PARTS			TREASURER'S CASH/ HIGHWAY		
			<b>Invoice Total:</b>	<b>1,007.85</b>	<b>1,007.85</b>
			<b>Check Total:</b>	<b>4,402.03</b>	<b>4,402.03</b>
			<b>Vendor Total:</b>	<b>4,402.03</b>	<b>4,402.03</b>
<b>484</b>	<b>WASTE MANAGEMENT OF WISCONSIN INC</b>				
02	C 02/18/22	WASTE MANAGEMENT CORP SERVICES INC	PO BOX 4648 CAROL STREAM IL 601974648		
		5864073-2443-5	1 NA TRASH SERVICE 2/1/22-2/28/22	22000290 83 1	1,274.19 1,274.19
22-701-31-53270-370-000-000-000-000			Cash: 22-701-00-11110-000-000-000-000		1,274.19 1,274.19
BLDING & GRD OPS/RDWAY SUPP			TREASURER'S CASH/ HIGHWAY		
			<b>Invoice Total:</b>	<b>1,274.19</b>	<b>1,274.19</b>
			<b>Check Total:</b>	<b>1,274.19</b>	<b>1,274.19</b>
			<b>Vendor Total:</b>	<b>1,274.19</b>	<b>1,274.19</b>
			<b>Total Manual Checks:</b>	<b>.00</b>	<b>Total Liquidated: 86,950.62</b>
			<b>Total Computer Checks:</b>	<b>86,950.62</b>	
			<b>Total ACH Checks:</b>	<b>.00</b>	
			<b>Total Electronic Checks:</b>	<b>.00</b>	
			<b>Total Other Checks:</b>	<b>.00</b>	
			<b>Total Unposted Payment Requests:</b>	<b>86,950.62</b>	
			<b>Total Posted Payment Requests:</b>	<b>.00</b>	
			<b>Grand Total:</b>	<b>86,950.62</b>	
			<b>Estimated No. of Checks:</b>	<b>26</b>	

Fund:	Amount	Liquidated
701	86,950.62	86,950.62
<b>Total of all Funds:</b>	<b>86,950.62</b>	<b>86,950.62</b>

Bank No	Bank Total
02	86,950.62

### PAYMENT AUTHORIZATION SIGNATURE PAGE

Batch No: 21-002166

Payment Total: \$ 1,298.00

Check Issuance Date: 02/18/2022

Highway Commissioner                      Jon Johnson                      \_\_\_\_\_

Assistant Commissioner                      Brian Spilde                      \_\_\_\_\_  
*Brian Spilde*

Fiscal Supervisor                              Vacant                              \_\_\_\_\_

Accountant                                      Vacant                              \_\_\_\_\_

### HIGHWAY COMMITTEE

Steve Chilson, Chair                              \_\_\_\_\_

Carl Anton, Vice-Chair                              \_\_\_\_\_

Nathan Anderson                              \_\_\_\_\_

Judy Gatlin                                      \_\_\_\_\_

Nathan Otto                                      \_\_\_\_\_

Report Date 02/16/22 01:41 PM  
 For Batches 002166 -002166 , - , -  
 Payment Request Date 02/18/22

County of Eau Claire  
 Payment Request Edit

Vendor No	Vendor Name	Check No	Date To Pay	Mailing Name	Address	App. Status	Amount	Liquidated
Claim No	PO No	Line	Invoice No	Acc Ctl 1099	Description	Batch-Trans-Line	Asset Tag	
105309	CORRE INC	02	C 02/18/22	CORRE INC	6510 GRAND TETON PLZ STE 314 MADISON WI 53719			
			9222		1 NA PROFESSIONAL SERVICES	21002166 1 1		
					Cash: 21-701-00-11110-000-000-000-000			
					CTHS ROAD CONST/Roadway Supplies	TREASURER'S CASH/ HIGHWAY		
							1,298.00	1,298.00
							1,298.00	1,298.00
							<b>Invoice Total:</b>	<b>1,298.00</b>
							<b>Check Total:</b>	<b>1,298.00</b>
							<b>Vendor Total:</b>	<b>1,298.00</b>

Total Manual Checks:	.00	<b>Total Liquidated:</b>	<b>1,298.00</b>
Total Computer Checks:	1,298.00		
Total ACH Checks:	.00		
Total Electronic Checks:	.00		
Total Other Checks:	.00		
Total Unposted Payment Requests:	1,298.00		
Total Posted Payment Requests:	.00		
Grand Total:	1,298.00		
Estimated No. of Checks:	1		

Fund:	Amount	Liquidated
701	1,298.00	1,298.00
<b>Total of all Funds:</b>	<b>1,298.00</b>	<b>1,298.00</b>

Bank No	Bank Total
02	1,298.00

PAYMENT AUTHORIZATION SIGNATURE PAGE

Batch No: 21-002179

Payment Total: \$4,887.80 ✓

Check Issuance Date: 02/25/2022

Highway Commissioner Jon Johnson \_\_\_\_\_

Assistant Commissioner Brian Spilde \_\_\_\_\_

Fiscal Supervisor Vacant \_\_\_\_\_

Accountant *Kelsey Weigel* Vacant *Kelsey Weigel*

HIGHWAY COMMITTEE

Steve Chilson, Chair \_\_\_\_\_

Carl Anton, Vice-Chair \_\_\_\_\_

Nathan Anderson \_\_\_\_\_

Judy Gatlin \_\_\_\_\_

Nathan Otto \_\_\_\_\_

Report Date 02/22/22 11:37 AM  
 For Batches 002179 -002179 , - , -  
 Payment Request Date 02/25/22

County of Eau Claire  
 Payment Request Edit

Page No 1  
 FPEDT01B

Vendor No	Vendor Name	Check No	Date To Pay	Mailing Name	Address	App. Status	Claim No	PO No	Line	Invoice No	Acc Ctl 1099	Description	Batch-Trans-Line	Asset Tag	Amount	Liquidated	
<b>5621</b>	<b>ALTOONA WATER &amp; SEWER UTILITY</b>																
02	C 02/25/22			ALTOONA WATER & SEWER UTILITY	1303 LYNN AVE ALTOONA WI 54720												
				1078-010122-PD					1	NA		WATER/SEWER UTILITIES PAST DUE	21002179	1 1	34.69	34.69	
				21-701-31-53270-220-000-000-000-000	Cash: 21-701-00-11110-000-000-000-000-000										34.69	34.69	
				BLDING & GRD OPS/ UTILITY SERVICE	TREASURER'S CASH/ HIGHWAY												
															<b>Invoice Total:</b>	<b>34.69</b>	<b>34.69</b>
				1081-010122-PD					1	NA		WATER/SEWER UTILITIES PAST DUE	21002179	2 1	15.97	15.97	
				21-701-31-53270-220-000-000-000-000	Cash: 21-701-00-11110-000-000-000-000-000										15.97	15.97	
				BLDING & GRD OPS/ UTILITY SERVICE	TREASURER'S CASH/ HIGHWAY												
															<b>Invoice Total:</b>	<b>15.97</b>	<b>15.97</b>
				1084-010122-PD					1	NA		WATER/SEWER UTILITIES PAST DUE	21002179	3 1	45.80	45.80	
				21-701-31-53270-220-000-000-000-000	Cash: 21-701-00-11110-000-000-000-000-000										45.80	45.80	
				BLDING & GRD OPS/ UTILITY SERVICE	TREASURER'S CASH/ HIGHWAY												
															<b>Invoice Total:</b>	<b>45.80</b>	<b>45.80</b>
															<b>Check Total:</b>	<b>96.46</b>	<b>96.46</b>
															<b>Vendor Total:</b>	<b>96.46</b>	<b>96.46</b>
<b>105309</b>	<b>CORRE INC</b>																
02	C 02/25/22			CORRE INC	6510 GRAND TETON PLZ STE 314 MADISON WI 53719												
				9223					1	NA		ENGINEERING SERVICES	21002179	4 1	672.00	672.00	
				21-701-31-53312-370-000-000-000-000	Cash: 21-701-00-11110-000-000-000-000-000										672.00	672.00	
				CTHS ROAD CONST/Roadway Supplies	TREASURER'S CASH/ HIGHWAY												
															<b>Invoice Total:</b>	<b>672.00</b>	<b>672.00</b>
				9223					1	NA		ENGINEERING SERVICES	21002179	5 1	1,014.00	1,014.00	
				21-701-31-53312-370-000-000-000-000	Cash: 21-701-00-11110-000-000-000-000-000										1,014.00	1,014.00	
				CTHS ROAD CONST/Roadway Supplies	TREASURER'S CASH/ HIGHWAY												
															<b>Invoice Total:</b>	<b>1,014.00</b>	<b>1,014.00</b>
				9223					1	NA		ENGINEERING SERVICES	21002179	6 1	828.00	828.00	
				21-701-31-53312-370-000-000-000-000	Cash: 21-701-00-11110-000-000-000-000-000										828.00	828.00	
				CTHS ROAD CONST/Roadway Supplies	TREASURER'S CASH/ HIGHWAY												
															<b>Invoice Total:</b>	<b>828.00</b>	<b>828.00</b>
				9223					1	NA		ENGINEERING SERVICES	21002179	7 1	102.00	102.00	
				21-701-31-53312-370-000-000-000-000	Cash: 21-701-00-11110-000-000-000-000-000										102.00	102.00	
				CTHS ROAD CONST/Roadway Supplies	TREASURER'S CASH/ HIGHWAY												
															<b>Invoice Total:</b>	<b>102.00</b>	<b>102.00</b>
				9223					1	NA		ENGINEERING SERVICES	21002179	8 1	112.00	112.00	
				21-701-31-53312-370-000-000-000-000	Cash: 21-701-00-11110-000-000-000-000-000										112.00	112.00	
				CTHS ROAD CONST/Roadway Supplies	TREASURER'S CASH/ HIGHWAY												
															<b>Invoice Total:</b>	<b>102.00</b>	<b>102.00</b>

Report Date 02/22/22 11:37 AM  
 For Batches 002179 -002179 , - , -  
 Payment Request Date 02/25/22

County of Eau Claire  
 Payment Request Edit

Page No 2  
 FPEDT01B

Vendor No	Vendor Name	Address	App. Status						
Check No	Date To Pay	Mailing Name							
Claim No	PO No	Line Invoice No	Acc Ctl 1099	Description	Batch-Trans-Line	Asset Tag	Amount	Liquidated	
<b>105309</b>	<b>CORRE INC</b>								
02	C 02/25/22	CORRE INC		6510 GRAND TETON PLZ STE 314 MADISON WI 53719					
		9223	1 NA	ENGINEERING SERVICES	21002179	8 1	112.00	112.00	
				Cash: 21-701-00-11110-000-000-000-000-000			112.00	112.00	
				CTHS ROAD CONST/Roadway Supplies					
				TREASURER'S CASH/ HIGHWAY					
				<b>Invoice Total:</b>			<b>112.00</b>	<b>112.00</b>	
		9223	1 NA	ENGINEERING SERVICES	21002179	9 1	115.00	115.00	
				Cash: 21-701-00-11110-000-000-000-000-000			115.00	115.00	
				CTHS ROAD CONST/Roadway Supplies					
				TREASURER'S CASH/ HIGHWAY					
				<b>Invoice Total:</b>			<b>115.00</b>	<b>115.00</b>	
		9223	1 NA	ENGINEERING SERVICES	21002179	10 1	105.00	105.00	
				Cash: 21-701-00-11110-000-000-000-000-000			105.00	105.00	
				CTHS ROAD CONST/Roadway Supplies					
				TREASURER'S CASH/ HIGHWAY					
				<b>Invoice Total:</b>			<b>105.00</b>	<b>105.00</b>	
				<b>Check Total:</b>			<b>2,948.00</b>	<b>2,948.00</b>	
				<b>Vendor Total:</b>			<b>2,948.00</b>	<b>2,948.00</b>	
<b>471</b>	<b>FABICK CAT / FABCO</b>								
02	C 02/25/22	JFTCO INC		PO BOX 952121 ST LOUIS MO 631952121					
		PIEC0078082	1 NA	LAMP HEAD	21002179	11 1	64.64	64.64	
				Cash: 21-701-00-11110-000-000-000-000-000			64.64	64.64	
				REPAIR PARTS-DIRECT CHARGE (CLRNG ACCT)					
				TREASURER'S CASH/ HIGHWAY					
				<b>Invoice Total:</b>			<b>64.64</b>	<b>64.64</b>	
				<b>Check Total:</b>			<b>64.64</b>	<b>64.64</b>	
				<b>Vendor Total:</b>			<b>64.64</b>	<b>64.64</b>	
<b>117765</b>	<b>HARTLAND LUBRICANTS &amp; CHEMICALS</b>								
02	C 02/25/22	HARTLAND LUBRICANTS & CHEMICALS		PO BOX 809 ONALASKA WI 546500809					
		SI227536	1 NA	TERSUS DEF	21002179	15 1	883.70	883.70	
				Cash: 21-701-00-11110-000-000-000-000-000			883.70	883.70	
				DIESEL ENGINE FLUID					
				TREASURER'S CASH/ HIGHWAY					
				<b>Invoice Total:</b>			<b>883.70</b>	<b>883.70</b>	
				<b>Check Total:</b>			<b>883.70</b>	<b>883.70</b>	
				<b>Vendor Total:</b>			<b>883.70</b>	<b>883.70</b>	
<b>7036</b>	<b>WISCONSIN EMERGENCY MANAGEMENT</b>								
02	C 02/25/22	WISCONSIN EMERGENCY MANAGEMENT		FEE PROCESSING SERVICEDRAWER 988 MILWAUKEE WI 532930988					
		227172	1 NA	2021 CHEMICAL TIER 2 FEE	21002179	14 1	485.00	485.00	

Report Date 02/22/22 11:37 AM  
 For Batches 002179 -002179 , - , -  
 Payment Request Date 02/25/22

County of Eau Claire  
 Payment Request Edit

Vendor No	Vendor Name	Check No	Date To Pay	Mailing Name	Address	App. Status	Claim No	PO No	Line	Invoice No	Acc Ctl 1099	Description	Batch-Trans-Line	Asset Tag	Amount	Liquidated		
<b>7036</b>	<b>WISCONSIN EMERGENCY MANAGEMENT</b>																	
02	C 02/25/22			WISCONSIN EMERGENCY MANAGEMENT	FEE PROCESSING SERVICEDRAWER 988 MILWAUKEE WI 532930988													
				227172					1	NA	2021	CHEMICAL TIER 2 FEE	21002179	14	1	485.00	485.00	
					Cash: 21-701-00-11110-000-000-000-000-000											485.00	485.00	
					BLDING & GRD OPS/RDWAY SUPP							TREASURER'S CASH/ HIGHWAY						
																<b>Invoice Total:</b>	<b>485.00</b>	<b>485.00</b>
																<b>Check Total:</b>	<b>485.00</b>	<b>485.00</b>
02	C 02/25/22			WISCONSIN EMERGENCY MANAGEMENT	FEE PROCESSING SERVICEDRAWER 988 MILWAUKEE WI 532930988													
				227167					1	NA	2021	CHEMICAL TIER 2 FEE	21002179	12	1	205.00	205.00	
					Cash: 21-701-00-11110-000-000-000-000-000											205.00	205.00	
					BLDING & GRD OPS/RDWAY SUPP							TREASURER'S CASH/ HIGHWAY						
																<b>Invoice Total:</b>	<b>205.00</b>	<b>205.00</b>
																<b>Check Total:</b>	<b>410.00</b>	<b>410.00</b>
																<b>Vendor Total:</b>	<b>895.00</b>	<b>895.00</b>
																<b>Total Liquidated:</b>	<b>4,887.80</b>	<b>4,887.80</b>
					Total Manual Checks:										.00			
					Total Computer Checks:										4,887.80			
					Total ACH Checks:										.00			
					Total Electronic Checks:										.00			
					Total Other Checks:										.00			
					Total Unposted Payment Requests:										4,887.80			
					Total Posted Payment Requests:										.00			
					Grand Total:										4,887.80			
					Estimated No. of Checks:										5			
					<b>Fund:</b>													
					701										4,887.80		4,887.80	
					<b>Total of all Funds:</b>										4,887.80		4,887.80	

Bank No	Bank Total
02	4,887.80



## PAYMENT AUTHORIZATION SIGNATURE PAGE

Batch No: 22-000316

Payment Total: \$447,742.45

Check Issuance Date: 02/25/2022

Highway Commissioner                      Jon Johnson                      \_\_\_\_\_

Assistant Commissioner                      Brian Spilde                      \_\_\_\_\_

Fiscal Supervisor                              Vacant                              \_\_\_\_\_

Accountant                                      Kelsey Weigel                      Kelsey Weigel

### HIGHWAY COMMITTEE

Steve Chilson, Chair                              \_\_\_\_\_

Carl Anton, Vice-Chair                              \_\_\_\_\_

Nathan Anderson                                      \_\_\_\_\_

Judy Gatlin    \_\_\_\_\_

Nathan Otto    \_\_\_\_\_

Report Date 02/22/22 01:12 PM  
 For Batches 000316 -000316 , - , -  
 Payment Request Date 02/25/22

County of Eau Claire  
 Payment Request Edit

Page No 1  
 FPEDT01B

Vendor No	Vendor Name	Address	App. Status	Amount	Liquidated
Check No	Date To Pay	Mailing Name			
Claim No	PO No	Line Invoice No	Acc Ctl 1099 Description	Batch-Trans-Line Asset Tag	
<b>5485</b>	<b>ALL SEASON TIRE CO</b>				
02	C 02/25/22	ALL SEASON TIRE	1102 MENOMONIE ST EAU CLAIRE WI 54703		
		355805	1 NA POWDERCOAT WHEELS	22000316 1 1	144.00 144.00
22-701-00-16122-000-000-000-000			Cash: 22-701-00-11110-000-000-000-000-000		144.00 144.00
TIRES			TREASURER'S CASH/ HIGHWAY		
			<b>Invoice Total:</b>		<b>144.00 144.00</b>
		355969	1 NA FOAM FILL	22000316 2 1	220.90 220.90
22-701-00-16152-000-000-000-000-000			Cash: 22-701-00-11110-000-000-000-000-000		220.90 220.90
TIRES-DIRECT CHARGE (CLRNG ACCT)			TREASURER'S CASH/ HIGHWAY		
			<b>Invoice Total:</b>		<b>220.90 220.90</b>
		355989	1 NA RETREAD	22000316 3 1	1,475.00 1,475.00
22-701-00-16122-000-000-000-000-000			Cash: 22-701-00-11110-000-000-000-000-000		1,475.00 1,475.00
TIRES			TREASURER'S CASH/ HIGHWAY		
			<b>Invoice Total:</b>		<b>1,475.00 1,475.00</b>
		355989	1 NA RETREAD	22000316 4 1	75.00 75.00
22-701-00-16152-000-000-000-000-000			Cash: 22-701-00-11110-000-000-000-000-000		75.00 75.00
TIRES-DIRECT CHARGE (CLRNG ACCT)			TREASURER'S CASH/ HIGHWAY		
			<b>Invoice Total:</b>		<b>75.00 75.00</b>
			<b>Check Total:</b>		<b>1,914.90 1,914.90</b>
			<b>Vendor Total:</b>		<b>1,914.90 1,914.90</b>
<b>7033</b>	<b>AT&amp;T</b>				
02	C 02/25/22	AT&T	PO BOX 5080 CAROL STREAM IL 601975080		
		715Z36002902	1 NA 2/7-3/6 PHONE BILL	22000316 5 1	25.03 25.03
22-701-31-53270-225-000-000-000-000			Cash: 22-701-00-11110-000-000-000-000-000		25.03 25.03
BLDNG & GRD OPS/ TELEPHONE			TREASURER'S CASH/ HIGHWAY		
			<b>Invoice Total:</b>		<b>25.03 25.03</b>
			<b>Check Total:</b>		<b>25.03 25.03</b>
			<b>Vendor Total:</b>		<b>25.03 25.03</b>
<b>39608</b>	<b>CHIPPEWA VALLEY ENERGY</b>				
02	C 02/25/22	CHIPPEWA VALLEY ENERGY	PO BOX 837 EAU CLAIRE WI 547020837		
		U206G175	1 NA DIESEL	22000316 6 1	179.89 179.89
22-701-00-16151-000-000-000-000-000			Cash: 22-701-00-11110-000-000-000-000-000		179.89 179.89
REPAIR PARTS-DIRECT CHARGE (CLRNG ACCT)			TREASURER'S CASH/ HIGHWAY		
			<b>Invoice Total:</b>		<b>179.89 179.89</b>
		U206G175	1 NA DIESEL	22000316 7 1	179.89 179.89

Vendor No	Vendor Name	Check No	Date To Pay	Mailing Name	Address	App. Status						
Claim No	PO No	Line	Invoice No	Acc	Ctl 1099	Description	Batch-Trans-Line	Asset Tag	Amount	Liquidated		
<b>39608</b>	<b>CHIPPEWA VALLEY ENERGY</b>											
02	C 02/25/22		CHIPPEWA VALLEY ENERGY			PO BOX 837 EAU CLAIRE WI 547020837						
			U206G175	1	NA	DIESEL	22000316 7 1		179.89	179.89		
						Cash: 22-701-00-11110-000-000-000-000-000			179.89	179.89		
						REPAIR PARTS-DIRECT CHARGE (CLRNG ACCT)						
						TREASURER'S CASH/ HIGHWAY						
						<b>Invoice Total:</b>			<b>179.89</b>	<b>179.89</b>		
			U206G175	1	NA	DIESEL	22000316 8 1		179.89	179.89		
						Cash: 22-701-00-11110-000-000-000-000-000			179.89	179.89		
						REPAIR PARTS-DIRECT CHARGE (CLRNG ACCT)						
						TREASURER'S CASH/ HIGHWAY						
						<b>Invoice Total:</b>			<b>179.89</b>	<b>179.89</b>		
			U206G175	1	NA	DIESEL	22000316 9 1		179.90	179.90		
						Cash: 22-701-00-11110-000-000-000-000-000			179.90	179.90		
						REPAIR PARTS-DIRECT CHARGE (CLRNG ACCT)						
						TREASURER'S CASH/ HIGHWAY						
						<b>Invoice Total:</b>			<b>179.90</b>	<b>179.90</b>		
						<b>Check Total:</b>			<b>719.57</b>	<b>719.57</b>		
						<b>Vendor Total:</b>			<b>719.57</b>	<b>719.57</b>		
<b>54208</b>	<b>CINTAS CORPORATION NO 2</b>											
02	C 02/25/22		CINTAS LOC#16			PO BOX 650838 DALLAS TX 752650838						
			4110260714	1	NA	SHOP SUPPLIES	22000316 10 1		19.23	19.23		
						Cash: 22-701-00-11110-000-000-000-000-000			19.23	19.23		
						BLDING & GRD OPS/RDWAY SUPP						
						TREASURER'S CASH/ HIGHWAY						
						<b>Invoice Total:</b>			<b>19.23</b>	<b>19.23</b>		
			4110260714	1	NA	FIELD UNIFORMS	22000316 11 1		40.90	40.90		
						Cash: 22-701-00-11110-000-000-000-000-000			40.90	40.90		
						FIELD SMALL TOOLS/ ROADWAY SUPPLIES						
						TREASURER'S CASH/ HIGHWAY						
						<b>Invoice Total:</b>			<b>40.90</b>	<b>40.90</b>		
			4110265655	1	NA	SHOP SUPPLIES	22000316 12 1		9.48	9.48		
						Cash: 22-701-00-11110-000-000-000-000-000			9.48	9.48		
						BLDING & GRD OPS/RDWAY SUPP						
						TREASURER'S CASH/ HIGHWAY						
						<b>Invoice Total:</b>			<b>9.48</b>	<b>9.48</b>		
			4110265655	1	NA	FIELD UNIFORMS	22000316 13 1		83.15	83.15		
						Cash: 22-701-00-11110-000-000-000-000-000			83.15	83.15		
						FIELD SMALL TOOLS/ ROADWAY SUPPLIES						
						TREASURER'S CASH/ HIGHWAY						
						<b>Invoice Total:</b>			<b>83.15</b>	<b>83.15</b>		
			4110266012	1	NA	SHOP SUPPLIES	22000316 14 1		144.89	144.89		





Report Date 02/22/22 01:12 PM  
 For Batches 000316 -000316 , - , -  
 Payment Request Date 02/25/22

County of Eau Claire  
 Payment Request Edit

Vendor No	Vendor Name	Check No	Date To Pay	Mailing Name	Address	App. Status	Claim No	PO No	Line	Invoice No	Acc	Ctl	1099	Description	Batch-Trans-Line	Asset Tag	Amount	Liquidated	
<b>5049</b>	<b>FORCE AMERICA INC</b>																		
02	C 02/25/22	FORCE AMERICA INC			501 E CLIFF RD STE 100 BURNSVILLE MN 55337														
		001-1609465					1	NA	AIR AND ROAD TEMP SENSOR	22000316	28	1					1,069.54	1,069.54	
		22-701-00-16121-000-000-000-000-000			Cash: 22-701-00-11110-000-000-000-000-000												1,069.54	1,069.54	
		REPAIR PARTS			TREASURER'S CASH/ HIGHWAY														
		001-1609637					1	NA	AIR AND ROAD TEMP SENSOR	22000316	29	1					1,075.88	1,075.88	
		22-701-00-16121-000-000-000-000-000			Cash: 22-701-00-11110-000-000-000-000-000												1,075.88	1,075.88	
		REPAIR PARTS			TREASURER'S CASH/ HIGHWAY														
																	<b>Invoice Total:</b>	<b>1,069.54</b>	<b>1,069.54</b>
																	<b>Check Total:</b>	<b>2,145.42</b>	<b>2,145.42</b>
																	<b>Vendor Total:</b>	<b>2,145.42</b>	<b>2,145.42</b>
<b>5889</b>	<b>GRAINGER INC, WW</b>																		
02	C 02/25/22	WW GRAINGER INC			DEPT 848650669 PALATINE IL 600380001														
		9196468418					1	NA	WHEEL CHOCK	22000316	30	1					96.44	96.44	
		22-701-00-16151-000-000-000-000-000			Cash: 22-701-00-11110-000-000-000-000-000												96.44	96.44	
		REPAIR PARTS-DIRECT CHARGE (CLRNG ACCT)			TREASURER'S CASH/ HIGHWAY														
		9198326796					1	NA	WATER NOZZLE	22000316	31	1					31.56	31.56	
		22-701-31-53220-370-000-000-000-000			Cash: 22-701-00-11110-000-000-000-000-000												31.56	31.56	
		FIELD SMALL TOOLS/ ROADWAY SUPPLIES			TREASURER'S CASH/ HIGHWAY														
																	<b>Invoice Total:</b>	<b>96.44</b>	<b>96.44</b>
																	<b>Check Total:</b>	<b>128.00</b>	<b>128.00</b>
																	<b>Vendor Total:</b>	<b>128.00</b>	<b>128.00</b>
<b>95125</b>	<b>HIGHWAY CONSTRUCTION PRODUCTS LLC</b>																		
02	C 02/25/22	HIGHWAY CONSTRUCTION PRODUCTS LLC			PO BOX 117 SPRING VALLEY WI 54767														
		9391					1	NA	THRIE BEAM PANEL	22000316	32	1					458.00	458.00	
		22-701-31-53328-370-000-000-000-000			Cash: 22-701-00-11110-000-000-000-000-000												458.00	458.00	
		REPAIR ACCID DAMAGE/ROAD SUPPLIES			TREASURER'S CASH/ HIGHWAY														
																	<b>Invoice Total:</b>	<b>458.00</b>	<b>458.00</b>
																	<b>Check Total:</b>	<b>458.00</b>	<b>458.00</b>
																	<b>Vendor Total:</b>	<b>458.00</b>	<b>458.00</b>
<b>13196</b>	<b>LF GEORGE INC</b>																		
02	C 02/25/22	L F GEORGE INC			PO BOX 22 OCONOMOWOC WI 530667209														
		E004318					1	NA	SKELETON GRAPPLE	22000316	33	1					6,000.00	6,000.00	
		22-701-00-16151-000-000-000-000-000			Cash: 22-701-00-11110-000-000-000-000-000												6,000.00	6,000.00	

Report Date 02/22/22 01:12 PM  
 For Batches 000316 -000316 , - , -  
 Payment Request Date 02/25/22

County of Eau Claire  
 Payment Request Edit

Vendor No	Vendor Name	Check No	Date To Pay	Mailing Name	Address	App. Status	Claim No	PO No	Line	Invoice No	Acc	Ctl	1099	Description	Batch-Trans-Line	Asset Tag	Amount	Liquidated	
<b>13196</b>	<b>LF GEORGE INC</b>	02	C 02/25/22	L F GEORGE INC	PO BOX 22 OCONOMOWOC WI 530667209														
				EO04318			1	NA	SKELETON GRAPPLE	22000316	33	1					6,000.00	6,000.00	
																	6,000.00	6,000.00	
				REPAIR PARTS-DIRECT CHARGE (CLRNG ACCT)	TREASURER'S CASH/ HIGHWAY														
				IS19061			1	NA	COILED ELECTRICAL CABLE	22000316	34	1					261.60	261.60	
																	261.60	261.60	
				22-701-00-16151-000-000-000-000-000	Cash: 22-701-00-11110-000-000-000-000-000												261.60	261.60	
				REPAIR PARTS-DIRECT CHARGE (CLRNG ACCT)	TREASURER'S CASH/ HIGHWAY														
				LC15516			1	NA	CHIPPER RENTAL 1/25/22-2/21/22	22000316	35	1					4,800.00	4,800.00	
																	4,800.00	4,800.00	
				22-701-31-53310-370-000-000-000-000	Cash: 22-701-00-11110-000-000-000-000-000												4,800.00	4,800.00	
				CTHS MAINT/ ROADWAY SUPPLIES	TREASURER'S CASH/ HIGHWAY														
																	4,800.00	4,800.00	
																	11,061.60	11,061.60	
																	11,061.60	11,061.60	
																	11,061.60	11,061.60	
<b>5770</b>	<b>MACHINE INDUSTRIES INC</b>	02	C 02/25/22	MACHINE INDUSTRIES INC	39 W CLIFF ST CHIPPEWA FALLS WI 54729														
				127314			1	NA	SHARPEN BLADES	22000316	36	1					280.00	280.00	
																	280.00	280.00	
				22-701-00-16151-000-000-000-000-000	Cash: 22-701-00-11110-000-000-000-000-000												280.00	280.00	
				REPAIR PARTS-DIRECT CHARGE (CLRNG ACCT)	TREASURER'S CASH/ HIGHWAY														
																	280.00	280.00	
																	280.00	280.00	
																	280.00	280.00	
																	280.00	280.00	
<b>5742</b>	<b>MARKET &amp; JOHNSON INC</b>	02	C 02/25/22	MARKET & JOHNSON INC	PO BOX 6302350 GALLOWAY ST EAU CLAIRE WI 547020630														
				012219			1	NA	HWY FACIL CONST 1/1/22-1/31/22	22000316	37	1					420,790.02	420,790.02	
																	420,790.02	420,790.02	
				22-701-31-59999-370-000-000-000-000	Cash: 22-701-00-11110-000-000-000-000-000												420,790.02	420,790.02	
				NEW HWY FACILITY/ROADWAY SUPPLIES	TREASURER'S CASH/ HIGHWAY														
																	420,790.02	420,790.02	
																	420,790.02	420,790.02	
																	420,790.02	420,790.02	
<b>5264</b>	<b>MASON SHOE</b>	02	C 02/25/22	MASON COMPANIES INC	301 N BRIDGE ST CHIPPEWA FALLS WI 54729														
				134842213			1	NA	SAFETY TOE BOOTS	22000316	38	1					100.00	100.00	
																	100.00	100.00	
				22-701-31-53220-370-000-000-000-000	Cash: 22-701-00-11110-000-000-000-000-000												100.00	100.00	







Vendor No	Vendor Name	Check No	Date To Pay	Mailing Name	Address	App. Status	Claim No	PO No	Line	Invoice No	Acc	Ctl	1099	Description	Batch-Trans-Line	Asset Tag	Amount	Liquidated
<b>4036</b>	<b>RIVER STATES TRUCK &amp; TRAILER INC</b>																	
02	C 02/25/22			RIVER STATES TRUCK & TRAILER INC	ACCOUNTING DEPT3959 N KINNEY COULEE RD LACROSSE WI 54601													
				2561994					1	NA	CAP-W			22000316	49	1	6.25	6.25
					Cash: 22-701-00-11110-000-000-000-000-000												6.25	6.25
					REPAIR PARTS-DIRECT CHARGE (CLRNG ACCT)	TREASURER'S CASH/ HIGHWAY												
						<b>Invoice Total:</b>											<b>6.25</b>	<b>6.25</b>
				2562204					1	NA	PIN/PARTS			22000316	50	1	99.52	99.52
					Cash: 22-701-00-11110-000-000-000-000-000												99.52	99.52
					REPAIR PARTS-DIRECT CHARGE (CLRNG ACCT)	TREASURER'S CASH/ HIGHWAY												
						<b>Invoice Total:</b>											<b>99.52</b>	<b>99.52</b>
				2562344					1	NA	COVER			22000316	51	1	107.86	107.86
					Cash: 22-701-00-11110-000-000-000-000-000												107.86	107.86
					REPAIR PARTS-DIRECT CHARGE (CLRNG ACCT)	TREASURER'S CASH/ HIGHWAY												
						<b>Invoice Total:</b>											<b>107.86</b>	<b>107.86</b>
						<b>Check Total:</b>											<b>213.63</b>	<b>213.63</b>
						<b>Vendor Total:</b>											<b>213.63</b>	<b>213.63</b>
<b>3042</b>	<b>RONCO ENGINEERING SALES CO INC</b>																	
02	C 02/25/22			RONCO ENGINEERING SALES INC	PO BOX 8891755 RONCO AVE WINONA MN 559870889													
				3273667					1	NA	PARTS			22000316	52	1	280.34	280.34
					Cash: 22-701-00-11110-000-000-000-000-000												280.34	280.34
					REPAIR PARTS	TREASURER'S CASH/ HIGHWAY												
						<b>Invoice Total:</b>											<b>280.34</b>	<b>280.34</b>
				3273777					1	NA	PARTS			22000316	53	1	48.89	48.89
					Cash: 22-701-00-11110-000-000-000-000-000												48.89	48.89
					REPAIR PARTS	TREASURER'S CASH/ HIGHWAY												
						<b>Invoice Total:</b>											<b>48.89</b>	<b>48.89</b>
				3273803					1	NA	PARTS			22000316	54	1	93.91	93.91
					Cash: 22-701-00-11110-000-000-000-000-000												93.91	93.91
					REPAIR PARTS	TREASURER'S CASH/ HIGHWAY												
						<b>Invoice Total:</b>											<b>93.91</b>	<b>93.91</b>
				3273807					1	NA	PARTS			22000316	55	1	84.70	84.70
					Cash: 22-701-00-11110-000-000-000-000-000												84.70	84.70
					REPAIR PARTS	TREASURER'S CASH/ HIGHWAY												
						<b>Invoice Total:</b>											<b>84.70</b>	<b>84.70</b>

Report Date 02/22/22 01:12 PM  
 For Batches 000316 -000316 , - , -  
 Payment Request Date 02/25/22

County of Eau Claire  
 Payment Request Edit

Vendor No	Vendor Name	Address	App. Status	Amount	Liquidated
Check No	Date To Pay	Mailing Name			
Claim No	PO No	Line Invoice No	Acc Ctl 1099 Description	Batch-Trans-Line Asset Tag	
<b>3042</b>	<b>RONCO ENGINEERING SALES CO INC</b>				
02	C 02/25/22	RONCO ENGINEERING SALES INC	PO BOX 8891755 RONCO AVE WINONA MN 559870889		
		3273921	1 NA PARTS	22000316 56 1	2,159.39 2,159.39
			Cash: 22-701-00-11110-000-000-000-000-000		2,159.39 2,159.39
			TREASURER'S CASH/ HIGHWAY		
				<b>Invoice Total:</b>	<b>2,159.39 2,159.39</b>
		3273935	1 NA COUPLER	22000316 57 1	411.52 411.52
			Cash: 22-701-00-11110-000-000-000-000-000		411.52 411.52
			TREASURER'S CASH/ HIGHWAY		
				<b>Invoice Total:</b>	<b>411.52 411.52</b>
		3274090	1 NA PARTS	22000316 58 1	25.41 25.41
			Cash: 22-701-00-11110-000-000-000-000-000		25.41 25.41
			TREASURER'S CASH/ HIGHWAY		
				<b>Invoice Total:</b>	<b>25.41 25.41</b>
				<b>Check Total:</b>	<b>3,104.16 3,104.16</b>
				<b>Vendor Total:</b>	<b>3,104.16 3,104.16</b>
<b>131091</b>	<b>SHOE DOCTOR LLC</b>				
02	C 02/25/22	THE SHOE DOCTOR LLC	2321 E CLAIREMONT AVE EAU CLAIRE WI 54701		
		5905	1 NA WORK BOOTS EMERSON/HATZINGER	22000316 59 1	292.79 292.79
			Cash: 22-701-00-11110-000-000-000-000-000		292.79 292.79
			TREASURER'S CASH/ HIGHWAY		
				<b>Invoice Total:</b>	<b>292.79 292.79</b>
				<b>Check Total:</b>	<b>292.79 292.79</b>
				<b>Vendor Total:</b>	<b>292.79 292.79</b>
<b>1209</b>	<b>TRUCKALINE SUSPENSION CENTER</b>				
02	C 02/25/22	TRUCKALINE SUSPENSION CENTER	1420 HILLCREST PKWY ALTOONA WI 54720		
		70566	1 NA UBOLT ASSY	22000316 60 1	57.42 57.42
			Cash: 22-701-00-11110-000-000-000-000-000		57.42 57.42
			TREASURER'S CASH/ HIGHWAY		
				<b>Invoice Total:</b>	<b>57.42 57.42</b>
				<b>Check Total:</b>	<b>57.42 57.42</b>
				<b>Vendor Total:</b>	<b>57.42 57.42</b>
<b>7495</b>	<b>UNIVERSAL TRUCK EQUIPMENT</b>				
02	C 02/25/22	UNIVERSAL TRUCK EQUIPMENT	N 15921 SCHUBERT ROAD GALESVILLE WI 54630		
		56977	1 NA HYDRAULIC PUSH CYLINDER ASSY	22000316 61 1	1,614.91 1,614.91
			Cash: 22-701-00-11110-000-000-000-000-000		1,614.91 1,614.91



Report Date 02/22/22 01:12 PM  
 For Batches 000316 -000316 , - , -  
 Payment Request Date 02/25/22

**County of Eau Claire**  
 Payment Request Edit

Page No 12  
 FPEDT01B

Vendor No	Vendor Name			Address			App. Status		
Check No	Date To Pay	Mailing Name						Amount	Liquidated
Claim No	PO No	Line	Invoice No	Acc Ctl 1099	Description	Batch-Trans-Line	Asset Tag		
					Total Manual Checks:			.00	
					Total Computer Checks:			447,742.45	
					Total ACH Checks:			.00	
					Total Electronic Checks:			.00	
					Total Other Checks:			.00	
					Total Unposted Payment Requests:			447,742.45	
					Total Posted Payment Requests:			.00	
					Grand Total:			447,742.45	
					Estimated No. of Checks:			26	
								<b>Total Liquidated:</b>	<b>447,742.45</b>

Fund:	Amount	Liquidated
701	447,742.45	447,742.45
<b>Total of all Funds:</b>	<u>447,742.45</u>	<u>447,742.45</u>

<u>Bank No</u>	<u>Bank Total</u>
02	447,742.45

PAYMENT AUTHORIZATION SIGNATURE PAGE

Batch No: 22-000345

Payment Total: \$ 51,615.36

Check Issuance Date: 03/04/2022

Highway Commissioner Jon Johnson \_\_\_\_\_

Assistant Commissioner Brian Spilde \_\_\_\_\_

Fiscal Supervisor Vacant \_\_\_\_\_

Accountant Kelsey Weigel *Kelsey Weigel* \_\_\_\_\_

HIGHWAY COMMITTEE

Steve Chilson, Chair \_\_\_\_\_

Carl Anton, Vice-Chair \_\_\_\_\_

Nathan Anderson \_\_\_\_\_

Judy Gatlin \_\_\_\_\_

Nathan Otto \_\_\_\_\_

Report Date 03/01/22 09:15 AM  
 For Batches 000345 -000345 , - , -  
 Payment Request Date 03/04/22

County of Eau Claire  
 Payment Request Edit

Vendor No	Vendor Name	Address	App. Status						
Check No	Date To Pay	Mailing Name		Amount	Liquidated				
Claim No	PO No	Line Invoice No	Acc Ctl 1099 Description	Batch-Trans-Line	Asset Tag				
<b>131873</b>	<b>ALTEC INDUSTRIES INC</b>								
02	A 03/04/22	ALTEC INDUSTRIES	PO BOX 11407 BIRMINGHAM AL 352460414						
		11842048	1 NA SCUFF PAD	22000345	2 1		180.34		180.34
			Cash: 22-701-00-11110-000-000-000-000-000				180.34		180.34
			REPAIR PARTS-DIRECT CHARGE (CLRNG ACCT)						
			TREASURER'S CASH/ HIGHWAY						
			<b>Invoice Total:</b>				<b>180.34</b>		<b>180.34</b>
		11842626	1 NA HYDRAULIC COMPONENT	22000345	3 1		85.10		85.10
			Cash: 22-701-00-11110-000-000-000-000-000				85.10		85.10
			REPAIR PARTS-DIRECT CHARGE (CLRNG ACCT)						
			TREASURER'S CASH/ HIGHWAY						
			<b>Invoice Total:</b>				<b>85.10</b>		<b>85.10</b>
		9233964	1 NA SCUFF PAD	22000345	1 1		-180.34		-180.34
			Cash: 22-701-00-11110-000-000-000-000-000				-180.34		-180.34
			REPAIR PARTS-DIRECT CHARGE (CLRNG ACCT)						
			TREASURER'S CASH/ HIGHWAY						
			<b>Invoice Total:</b>				<b>-180.34</b>		<b>-180.34</b>
			<b>Check Total:</b>				<b>85.10</b>		<b>85.10</b>
			<b>Vendor Total:</b>				<b>85.10</b>		<b>85.10</b>
<b>5254</b>	<b>APPLIED INDUSTRIAL TECHNOLOGIES INC</b>								
02	C 03/04/22	APPLIED INDUSTRIAL TECHNOLOGIES	22510 NETWORK PL CHICAGO IL 606731225						
		7023502177	1 NA PARTS	22000345	4 1		313.19		313.19
			Cash: 22-701-00-11110-000-000-000-000-000				313.19		313.19
			SHOP/ROADWAY SUPPLIES						
			TREASURER'S CASH/ HIGHWAY						
			<b>Invoice Total:</b>				<b>313.19</b>		<b>313.19</b>
			<b>Check Total:</b>				<b>313.19</b>		<b>313.19</b>
			<b>Vendor Total:</b>				<b>313.19</b>		<b>313.19</b>
<b>2342</b>	<b>AUTO VALUE EAU CLAIRE/APH STORES INC</b>								
02	C 03/04/22	AUTO VALUE EAU CLAIRE	3235 E HAMILTON AVE EAU CLAIRE WI 54701						
		80116319	1 NA BLUE CEMENT	22000345	5 1		15.97		15.97
			Cash: 22-701-00-11110-000-000-000-000-000				15.97		15.97
			SHOP/ REPAIR & MAINT SUPPLIES						
			TREASURER'S CASH/ HIGHWAY						
			<b>Invoice Total:</b>				<b>15.97</b>		<b>15.97</b>
		80116953	1 NA FILTERS	22000345	6 1		46.97		46.97
			Cash: 22-701-00-11110-000-000-000-000-000				46.97		46.97
			REPAIR PARTS						
			TREASURER'S CASH/ HIGHWAY						
			<b>Invoice Total:</b>				<b>46.97</b>		<b>46.97</b>
		80117038	1 NA UNDERHOIST	22000345	7 1		339.96		339.96















Report Date 03/01/22 09:15 AM  
 For Batches 000345 -000345 , - , -  
 Payment Request Date 03/04/22

County of Eau Claire  
 Payment Request Edit

Vendor No	Vendor Name	Check No	Date To Pay	Mailing Name	Address	App. Status	Claim No	PO No	Line	Invoice No	Acc	Ctl	1099	Description	Batch-Trans-Line	Asset Tag	Amount	Liquidated	
<b>1549</b>	<b>JOHN DEERE FINANCIAL</b>																		
02	C 03/04/22	FARM PLAN			PO BOX 4450 CAROL STREAM IL 601974450														
		2372473												1 NA 20 IN BAR	22000345 47 1		91.90	91.90	
		22-701-00-16121-000-000-000-000-000			Cash: 22-701-00-11110-000-000-000-000-000												91.90	91.90	
		REPAIR PARTS			TREASURER'S CASH/ HIGHWAY														
																	<b>91.90</b>	<b>91.90</b>	
																	<b>689.78</b>	<b>689.78</b>	
																	<b>689.78</b>	<b>689.78</b>	
<b>35998</b>	<b>LARSON COMPANIES</b>																		
02	C 03/04/22	LARSON COMPANIES			PO BOX 270710 MINNEAPOLIS MN 55427														
		5304250499												1 NA FILTER	22000345 48 1		8.28	8.28	
		22-701-00-16121-000-000-000-000-000			Cash: 22-701-00-11110-000-000-000-000-000												8.28	8.28	
		REPAIR PARTS			TREASURER'S CASH/ HIGHWAY														
																	<b>8.28</b>	<b>8.28</b>	
		5304256049												1 NA ELEMENT INTAKE	22000345 49 1		49.98	49.98	
		22-701-00-16121-000-000-000-000-000			Cash: 22-701-00-11110-000-000-000-000-000												49.98	49.98	
		REPAIR PARTS			TREASURER'S CASH/ HIGHWAY														
																	<b>49.98</b>	<b>49.98</b>	
		5304256088												1 NA COALESCING CARTRIDGE	22000345 50 1		60.38	60.38	
		22-701-00-16121-000-000-000-000-000			Cash: 22-701-00-11110-000-000-000-000-000												60.38	60.38	
		REPAIR PARTS			TREASURER'S CASH/ HIGHWAY														
																	<b>60.38</b>	<b>60.38</b>	
		5304256329												1 NA BRAKE CHAMBER	22000345 51 1		98.52	98.52	
		22-701-00-16121-000-000-000-000-000			Cash: 22-701-00-11110-000-000-000-000-000												98.52	98.52	
		REPAIR PARTS			TREASURER'S CASH/ HIGHWAY														
																	<b>98.52</b>	<b>98.52</b>	
		5304256715												1 NA ELEMENT CABIN AIR	22000345 52 1		9.88	9.88	
		22-701-00-16121-000-000-000-000-000			Cash: 22-701-00-11110-000-000-000-000-000												9.88	9.88	
		REPAIR PARTS			TREASURER'S CASH/ HIGHWAY														
																	<b>9.88</b>	<b>9.88</b>	
		5304256731												1 NA SPIN ON LUBE	22000345 53 1		3.96	3.96	
		22-701-00-16121-000-000-000-000-000			Cash: 22-701-00-11110-000-000-000-000-000												3.96	3.96	
		REPAIR PARTS			TREASURER'S CASH/ HIGHWAY														
																	<b>3.96</b>	<b>3.96</b>	
		5304256844												1 NA FILTERS	22000345 54 1		68.01	68.01	
		22-701-00-16121-000-000-000-000-000			Cash: 22-701-00-11110-000-000-000-000-000												68.01	68.01	
		REPAIR PARTS			TREASURER'S CASH/ HIGHWAY														
																	<b>3.96</b>	<b>3.96</b>	

Report Date 03/01/22 09:15 AM  
 For Batches 000345 -000345 , - , -  
 Payment Request Date 03/04/22

County of Eau Claire  
 Payment Request Edit

Vendor No	Vendor Name	Check No	Date To Pay	Mailing Name	Address	App. Status	Claim No	PO No	Line	Invoice No	Acc	Ctl	1099	Description	Batch-Trans-Line	Asset Tag	Amount	Liquidated	
<b>35998</b>	<b>LARSON COMPANIES</b>																		
02	C 03/04/22			LARSON COMPANIES	PO BOX 270710 MINNEAPOLIS MN 55427														
				5304256844					1	NA FILTERS				22000345	54	1	68.01	68.01	
					Cash: 22-701-00-11110-000-000-000-000-000												68.01	68.01	
					TREASURER'S CASH/ HIGHWAY														
																	<b>68.01</b>	<b>68.01</b>	
				5304256941					1	NA SNOW BLADE				22000345	55	1	71.60	71.60	
					Cash: 22-701-00-11110-000-000-000-000-000												71.60	71.60	
					TREASURER'S CASH/ HIGHWAY														
																	<b>71.60</b>	<b>71.60</b>	
				5304257030					1	NA FILTER				22000345	56	1	242.81	242.81	
					Cash: 22-701-00-11110-000-000-000-000-000												242.81	242.81	
					TREASURER'S CASH/ HIGHWAY														
																	<b>242.81</b>	<b>242.81</b>	
				5304257432					1	NA FILTER				22000345	57	1	11.30	11.30	
					Cash: 22-701-00-11110-000-000-000-000-000												11.30	11.30	
					TREASURER'S CASH/ HIGHWAY														
																	<b>11.30</b>	<b>11.30</b>	
				5304257496					1	NA FILTER				22000345	58	1	9.79	9.79	
					Cash: 22-701-00-11110-000-000-000-000-000												9.79	9.79	
					TREASURER'S CASH/ HIGHWAY														
																	<b>9.79</b>	<b>9.79</b>	
				5304257675					1	NA FILTER				22000345	59	1	70.83	70.83	
					Cash: 22-701-00-11110-000-000-000-000-000												70.83	70.83	
					TREASURER'S CASH/ HIGHWAY														
																	<b>70.83</b>	<b>70.83</b>	
				5304257688					1	NA LUBE/ELEMENT CABIN AIR				22000345	60	1	21.76	21.76	
					Cash: 22-701-00-11110-000-000-000-000-000												21.76	21.76	
					TREASURER'S CASH/ HIGHWAY														
																	<b>21.76</b>	<b>21.76</b>	
				5304257747					1	NA SPIN ON LUBE				22000345	61	1	3.96	3.96	
					Cash: 22-701-00-11110-000-000-000-000-000												3.96	3.96	
					TREASURER'S CASH/ HIGHWAY														
																	<b>3.96</b>	<b>3.96</b>	





Report Date 03/01/22 09:15 AM  
 For Batches 000345 -000345 , - , -  
 Payment Request Date 03/04/22

County of Eau Claire  
 Payment Request Edit

Vendor No	Vendor Name	Address	App. Status	Amount	Liquidated		
Check No	Date To Pay	Mailing Name					
Claim No	PO No	Line Invoice No	Acc Ctl 1099 Description	Batch-Trans-Line	Asset Tag	Amount	Liquidated
<b>35998</b>	<b>LARSON COMPANIES</b>						
02	C 03/04/22	LARSON COMPANIES		PO BOX 270710 MINNEAPOLIS MN 55427			
				<b>Check Total:</b>		<b>1,037.21</b>	1,037.21
				<b>Vendor Total:</b>		<b>1,037.21</b>	<b>1,037.21</b>
<b>13196</b>	<b>LF GEORGE INC</b>						
02	C 03/04/22	L F GEORGE INC		PO BOX 22 OCONOMOWOC WI 530667209			
		RO16311	1 NA BOBCAT REPAIR AND PARTS	22000345 70 1		315.00	315.00
			Cash: 22-701-00-11110-000-000-000-000-000			315.00	315.00
			REPAIR PARTS-EXTERNAL LABOR(CLRNG ACCT)				
			TREASURER'S CASH/ HIGHWAY				
				<b>Invoice Total:</b>		<b>315.00</b>	<b>315.00</b>
		RO16311	1 NA BOBCAT REPAIR AND PARTS	22000345 71 1		152.33	152.33
			Cash: 22-701-00-11110-000-000-000-000-000			152.33	152.33
			REPAIR PARTS-EXTERNAL PARTS/OTHER(CLRNG)				
			TREASURER'S CASH/ HIGHWAY				
				<b>Invoice Total:</b>		<b>152.33</b>	<b>152.33</b>
				<b>Check Total:</b>		<b>467.33</b>	467.33
				<b>Vendor Total:</b>		<b>467.33</b>	<b>467.33</b>
<b>161794</b>	<b>MINNESOTA HOIST INSPECTION INC</b>						
02	C 03/04/22	MINNESOTA HOIST INSPECTION INC		PO BOX 3340 DULUTH MN 55803			
		1688	1 NA LIFT INSPECTIONS	22000345 72 1		2,090.00	2,090.00
			Cash: 22-701-00-11110-000-000-000-000-000			2,090.00	2,090.00
			SHOP/ REPAIR & MAINT SUPPLIES				
			TREASURER'S CASH/ HIGHWAY				
				<b>Invoice Total:</b>		<b>2,090.00</b>	<b>2,090.00</b>
				<b>Check Total:</b>		<b>2,090.00</b>	2,090.00
				<b>Vendor Total:</b>		<b>2,090.00</b>	<b>2,090.00</b>
<b>56308</b>	<b>MISSISSIPPI WELDERS SUPPLY CO INC</b>						
02	C 03/04/22	MISSISSIPPI WELDERS SUPPLY CO INC		PO BOX 1036 WINONA MN 559877036			
		3699609	1 NA NORZON PLUS	22000345 73 1		20.52	20.52
			Cash: 22-701-00-11110-000-000-000-000-000			20.52	20.52
			SHOP/ REPAIR & MAINT SUPPLIES				
			TREASURER'S CASH/ HIGHWAY				
				<b>Invoice Total:</b>		<b>20.52</b>	<b>20.52</b>
		3709748	1 NA PEARL GOAD PLM SPNDX	22000345 74 1		643.84	643.84
			Cash: 22-701-00-11110-000-000-000-000-000			643.84	643.84
			FIELD SMALL TOOLS/ ROADWAY SUPPLIES				
			TREASURER'S CASH/ HIGHWAY				
				<b>Invoice Total:</b>		<b>643.84</b>	<b>643.84</b>
				<b>Check Total:</b>		<b>664.36</b>	664.36
				<b>Vendor Total:</b>		<b>664.36</b>	<b>664.36</b>
<b>5973</b>	<b>NAPA AUTO PARTS</b>						



Report Date 03/01/22 09:15 AM  
 For Batches 000345 -000345 , - , -  
 Payment Request Date 03/04/22

County of Eau Claire  
 Payment Request Edit

Vendor No	Vendor Name	Check No	Date To Pay	Mailing Name	Address	App. Status	Claim No	PO No	Line	Invoice No	Acc	Ctl	1099	Description	Batch-Trans-Line	Asset Tag	Amount	Liquidated	
<b>88145</b>	<b>NUSS TRUCK &amp; EQUIPMENT</b>																		
02	C 03/04/22			NUSS TRUCK & EQUIPMENT	PO BOX 6699 ROCHESTER MN 55903														
				5292234P					1	NA	WIPER ARM			22000345	82	1	37.39	37.39	
					Cash: 22-701-00-11110-000-000-000-000-000												37.39	37.39	
					TREASURER'S CASH/ HIGHWAY														
																	<b>Invoice Total:</b>	<b>37.39</b>	<b>37.39</b>
				5292244P					1	NA	LUBE SPIN/APR PRMY PC			22000345	83	1	9.43	9.43	
					Cash: 22-701-00-11110-000-000-000-000-000												9.43	9.43	
					TREASURER'S CASH/ HIGHWAY														
																	<b>Invoice Total:</b>	<b>9.43</b>	<b>9.43</b>
																	<b>Check Total:</b>	<b>541.53</b>	<b>541.53</b>
																	<b>Vendor Total:</b>	<b>541.53</b>	<b>541.53</b>
<b>1144</b>	<b>OVERHEAD DOOR CO OF THE CHIPPEWA VALLEY</b>																		
02	C 03/04/22			OVERHEAD DOOR CO OF THE	CHIPPEWA VALLEY INC4901 LYLE LNPO BOX 1083 EAU CLAIRE WI 547021083														
				67752					1	NA	ADJUST PHOTO EYES OF DOOR			22000345	84	1	95.00	95.00	
					Cash: 22-701-00-11110-000-000-000-000-000												95.00	95.00	
					TREASURER'S CASH/ HIGHWAY														
																	<b>Invoice Total:</b>	<b>95.00</b>	<b>95.00</b>
																	<b>Check Total:</b>	<b>95.00</b>	<b>95.00</b>
																	<b>Vendor Total:</b>	<b>95.00</b>	<b>95.00</b>
<b>133</b>	<b>PITNEY BOWES/PURCHASE POWER</b>																		
02	C 03/04/22			PURCHASE POWER	PO BOX 371874 PITTSBURGH PA 152507874														
				021122-BILL					1	NA	POSTAGE MACHINE EXPENSE			22000345	85	1	59.97	59.97	
					Cash: 22-701-00-11110-000-000-000-000-000												59.97	59.97	
					TREASURER'S CASH/ HIGHWAY														
																	<b>Invoice Total:</b>	<b>59.97</b>	<b>59.97</b>
																	<b>Check Total:</b>	<b>59.97</b>	<b>59.97</b>
																	<b>Vendor Total:</b>	<b>59.97</b>	<b>59.97</b>
<b>1491</b>	<b>POMP'S TIRE SERVICE INC</b>																		
02	C 03/04/22			POMP'S TIRE SERVICE INC	PO BOX 88697 MILWAUKEE WI 532888697														
				560060278					1	NA	TIRES			22000345	86	1	325.00	325.00	
					Cash: 22-701-00-11110-000-000-000-000-000												325.00	325.00	
					TREASURER'S CASH/ HIGHWAY														
																	<b>Invoice Total:</b>	<b>325.00</b>	<b>325.00</b>
				560060278					1	NA	TIRES			22000345	87	1	1,369.26	1,369.26	

Report Date 03/01/22 09:15 AM  
 For Batches 000345 -000345 , - , -  
 Payment Request Date 03/04/22

County of Eau Claire  
 Payment Request Edit

Vendor No	Vendor Name	Address	App. Status	Amount	Liquidated
Check No	Date To Pay	Mailing Name			
Claim No	PO No	Line Invoice No	Acc Ctl 1099 Description	Batch-Trans-Line Asset Tag	
<b>1491</b>	<b>POMP'S TIRE SERVICE INC</b>				
02	C 03/04/22	POMP'S TIRE SERVICE INC			
		560060278	1 NA TIRES	22000345 87 1	1,369.26 1,369.26
			Cash: 22-701-00-11110-000-000-000-000-000		1,369.26 1,369.26
			REPAIR PARTS-EXTERNAL PARTS/OTHER(CLRNG) TREASURER'S CASH/ HIGHWAY		
				<b>Invoice Total:</b>	<b>1,369.26 1,369.26</b>
				<b>Check Total:</b>	<b>1,694.26 1,694.26</b>
				<b>Vendor Total:</b>	<b>1,694.26 1,694.26</b>
<b>4036</b>	<b>RIVER STATES TRUCK &amp; TRAILER INC</b>				
02	C 03/04/22	RIVER STATES TRUCK & TRAILER INC			
		2562548	1 NA SLASH P02D	22000345 88 1	21.10 21.10
			Cash: 22-701-00-11110-000-000-000-000-000		21.10 21.10
			REPAIR PARTS-DIRECT CHARGE (CLRNG ACCT) TREASURER'S CASH/ HIGHWAY		
				<b>Invoice Total:</b>	<b>21.10 21.10</b>
				<b>Check Total:</b>	<b>7.38 7.38</b>
				<b>Vendor Total:</b>	<b>28.48 28.48</b>
<b>3042</b>	<b>RONCO ENGINEERING SALES CO INC</b>				
02	C 03/04/22	RONCO ENGINEERING SALES INC			
		3274212	1 NA PARTS	22000345 90 1	133.46 133.46
			Cash: 22-701-00-11110-000-000-000-000-000		133.46 133.46
			FIELD SMALL TOOLS/ ROADWAY SUPPLIES TREASURER'S CASH/ HIGHWAY		
				<b>Invoice Total:</b>	<b>133.46 133.46</b>
				<b>Check Total:</b>	<b>50.42 50.42</b>
				<b>Vendor Total:</b>	<b>183.88 183.88</b>
<b>3537</b>	<b>SHORT ELLIOTT HENDRICKSON INC</b>				
02	C 03/04/22	SHORT ELLIOTT HENDRICKSON INC			
		420059	1 NA EC COUNTY PLATS CTH V/O/V	22000345 92 1	2,598.23 2,598.23

Report Date 03/01/22 09:15 AM  
 For Batches 000345 -000345 , - , -  
 Payment Request Date 03/04/22

County of Eau Claire  
 Payment Request Edit

Page No 15  
 FPEDT01B

Vendor No	Vendor Name	Check No	Date To Pay	Mailing Name	Address	App. Status	Claim No	PO No	Line	Invoice No	Acc Ctl 1099	Description	Batch-Trans-Line	Asset Tag	Amount	Liquidated	
<b>3537</b>	<b>SHORT ELLIOTT HENDRICKSON INC</b>																
02	C 03/04/22	SHORT ELLIOTT HENDRICKSON INC		PO BOX 64780 ST PAUL MN 551640780													
		420059		1 NA EC COUNTY PLATS CTH V/O/V					22000345	92	1				2,598.23	2,598.23	
		22-701-31-53312-370-000-000-000-000		Cash: 22-701-00-11110-000-000-000-000-000											2,598.23	2,598.23	
		CTHS ROAD CONST/Roadway Supplies		TREASURER'S CASH/ HIGHWAY													
															<b>Invoice Total:</b>	<b>2,598.23</b>	<b>2,598.23</b>
		420621		1 NA ENGINEERING SERVICES - CTH F					22000345	93	1				5,008.50	5,008.50	
		22-701-31-53312-370-000-000-000-000		Cash: 22-701-00-11110-000-000-000-000-000											5,008.50	5,008.50	
		CTHS ROAD CONST/Roadway Supplies		TREASURER'S CASH/ HIGHWAY													
															<b>Invoice Total:</b>	<b>5,008.50</b>	<b>5,008.50</b>
															<b>Check Total:</b>	<b>7,606.73</b>	<b>7,606.73</b>
															<b>Vendor Total:</b>	<b>7,606.73</b>	<b>7,606.73</b>
<b>161239</b>	<b>SNAP ON CREDIT LLC</b>																
02	C 03/04/22	SNAP ON CREDIT LLC		950 TECHNOLOGY WAY STE 301 LIBERTYVILLE IL 60048													
		122935425-021022		1 NA ETHOS EDGE SUBSCRPTION					22000345	94	1				38.92	38.92	
		22-701-31-53230-350-000-000-000-000		Cash: 22-701-00-11110-000-000-000-000-000											38.92	38.92	
		SHOP/ REPAIR & MAINT SUPPLIES		TREASURER'S CASH/ HIGHWAY													
															<b>Invoice Total:</b>	<b>38.92</b>	<b>38.92</b>
															<b>Check Total:</b>	<b>38.92</b>	<b>38.92</b>
															<b>Vendor Total:</b>	<b>38.92</b>	<b>38.92</b>
<b>4142</b>	<b>TOWN OF OTTER CREEK TREASURER</b>																
02	C 03/04/22	TOWN OF OTTER CREEK TREASURER		DEANNA KLINDWORTHS12020 CTY RD HH AUGUSTA WI 54722													
		HANSON-2022		1 NA COUNTY BRIDGE AID - HANSON RD					22000345	95	1				3,692.50	3,692.50	
		22-701-31-53182-370-000-000-000-000		Cash: 22-701-00-11110-000-000-000-000-000											3,692.50	3,692.50	
		CO AID BRDG/ROADWAY SUPPLIES		TREASURER'S CASH/ HIGHWAY													
															<b>Invoice Total:</b>	<b>3,692.50</b>	<b>3,692.50</b>
		SCHULTZ-2022		1 NA COUNTY BRIDGE AID - SCHULTZ RD					22000345	96	1				4,267.50	4,267.50	
		22-701-31-53182-370-000-000-000-000		Cash: 22-701-00-11110-000-000-000-000-000											4,267.50	4,267.50	
		CO AID BRDG/ROADWAY SUPPLIES		TREASURER'S CASH/ HIGHWAY													
															<b>Invoice Total:</b>	<b>4,267.50</b>	<b>4,267.50</b>
		WREN-2022		1 NA COUNTY BRIDGE AID - WREN RD					22000345	97	1				2,280.00	2,280.00	
		22-701-31-53182-370-000-000-000-000		Cash: 22-701-00-11110-000-000-000-000-000											2,280.00	2,280.00	
		CO AID BRDG/ROADWAY SUPPLIES		TREASURER'S CASH/ HIGHWAY													
															<b>Invoice Total:</b>	<b>2,280.00</b>	<b>2,280.00</b>
															<b>Check Total:</b>	<b>10,240.00</b>	<b>10,240.00</b>
															<b>Vendor Total:</b>	<b>10,240.00</b>	<b>10,240.00</b>



Report Date 03/01/22 09:15 AM  
For Batches 000345 - 000345 , - , -  
Payment Request Date 03/04/22

**County of Eau Claire**  
Payment Request Edit

Page No 17  
FPEDT01B

Vendor No	Vendor Name									
Check No	Date To Pay	Mailing Name		Address				App. Status		
Claim No	PO No	Line	Invoice No	Acc	Ctl 1099	Description	Batch-Trans-Line	Asset Tag	Amount	Liquidated
			701			51,615.36			51,615.36	
<b>Total of all Funds:</b>						51,615.36			51,615.36	
<b>Bank No</b>				<b>Bank Total</b>						
02				51,615.36						

PAYMENT AUTHORIZATION SIGNATURE PAGE

Batch No: 21-002201

Payment Total: \$395.57

Check Issuance Date: 03/04/2022

Highway Commissioner Jon Johnson \_\_\_\_\_

Assistant Commissioner Brian Spilde \_\_\_\_\_

Fiscal Supervisor Vacant \_\_\_\_\_

Accountant Kelsey Weigel Kelsey Weigel

HIGHWAY COMMITTEE

Steve Chilson, Chair \_\_\_\_\_

Carl Anton, Vice-Chair \_\_\_\_\_

Nathan Anderson \_\_\_\_\_

Judy Gatlin \_\_\_\_\_

Nathan Otto \_\_\_\_\_



Report Date 03/01/22 08:09 AM  
 For Batches 002201 -002201 , - , -  
 Payment Request Date 03/04/22

**County of Eau Claire**  
 Payment Request Edit

Vendor No	Vendor Name	Check No	Date To Pay	Mailing Name	Address	App. Status	Claim No	PO No	Line	Invoice No	Acc Ctl 1099	Description	Batch-Trans-Line	Asset Tag	Amount	Liquidated	
<b>3042</b>	<b>RONCO ENGINEERING SALES CO INC</b>																
02	C 03/04/22			RONCO ENGINEERING SALES INC	PO BOX 8891755 RONCO AVE WINONA MN 559870889												
				3266023					1	NA PARTS			21002201	1 1	98.22	98.22	
				21-701-00-16121-000-000-000-000	Cash: 21-701-00-11110-000-000-000-000-000										98.22	98.22	
				REPAIR PARTS	TREASURER'S CASH/ HIGHWAY												
															<b>Invoice Total:</b>	<b>98.22</b>	<b>98.22</b>
				3266125					1	NA PARTS			21002201	2 1	297.35	297.35	
				21-701-00-16121-000-000-000-000	Cash: 21-701-00-11110-000-000-000-000-000										297.35	297.35	
				REPAIR PARTS	TREASURER'S CASH/ HIGHWAY												
															<b>Invoice Total:</b>	<b>297.35</b>	<b>297.35</b>
															<b>Check Total:</b>	<b>395.57</b>	<b>395.57</b>
															<b>Vendor Total:</b>	<b>395.57</b>	<b>395.57</b>

Total Manual Checks:	.00	<b>Total Liquidated:</b>	<b>395.57</b>
Total Computer Checks:	395.57		
Total ACH Checks:	.00		
Total Electronic Checks:	.00		
Total Other Checks:	.00		
Total Unposted Payment Requests:	395.57		
Total Posted Payment Requests:	.00		
Grand Total:	395.57		
Estimated No. of Checks:	1		

Fund:	Amount	Liquidated
701	395.57	395.57
<b>Total of all Funds:</b>	<b>395.57</b>	<b>395.57</b>

Bank No	Bank Total
02	395.57