

MINUTES

Eau Claire County

• Committee on Parks & Forest •

Monday, January 11, 2021

5:00 p.m.

Virtual Meeting

Present: Kevin Stelljes, Joe, Knight, Missy Christopherson, Gary Gibson, Tami Schraufnagel

Others Present: Josh Pedersen – Director, Jody Gindt – Supervisor, Winnie Parker – Administrative Specialist III (Committee Clerk), Kyle Johnson – DNR County Forest Liaison, Erika Gullarud – Fiscal Associate, Samantha Kraegenbrink – Assistant to the County Administrator, Bob Schwartz – (Kickin Kids)

Chair Selljes called the meeting to order at 5:12 p.m. and confirmed public posting of the meeting.

Verbal roll call was taken by the committee clerk and is noted above under present.

No members of the public were present.

The committee reviewed the minutes from the December 14, 2020 meeting. Supervisor Christopherson moved to approve the minutes as presented. The minutes passed unanimously.

The committee discussed the 2021 public use of Tower Ridge during the winter season. There was deliberation on the merits of renting port-a-potty units, limiting the use of the chalet to only the vestibule to be able to access the bathroom facilities, limiting the number of individuals in the bathrooms at any given time, adding hand sanitizer to the vestibule, posting additional signs, and closing the drinking fountain. Supervisor Christopherson motioned to close the chalet, except for the vestibule to allow for restroom use, only allowing one person to use the restroom at a time except permitting an immediate family to assisting those in need of help, add signage requiring mask in all county buildings and following all recommended guidelines current with the CDC and county standards. A roll call vote was taken (5 in favor, and 0 opposed).

Bob Schwartz presented a request for two free days of skiing. Kickin Kids would provide volunteers to give lessons for adults on January 31, and February 7, 2021, between the hours of 1-4 p.m. The committee discussed how it was a good idea to encourage adults and older children to participate in skiing, how historically, when there was the regular entrance fee of \$6, individuals would park on the road, and equipment rentals are difficult to come by during this time of year. Supervisor Schraufnagel moved to have two free ski days January 31, and February 7, 2021, weather and conditions permitting, whereby Kickin Kids would provide volunteers to give lessons from 1-4 p.m., using all Covid restriction recommended by the CDC and the county, requiring the instructors to wear a buff and participants required to wear face mask recommended for proper protection (knit wear which does not allow sufficient protection) and for Josh and Winnie to work with Bob to facilitate the event. All in favor, non-opposed.

In the County Forest Comprehensive Land Use Plan (15-year plan) it was suggested that some structural and grammatical corrections were needed, and the committee could drop off their

comments in the lobby of the Parks and Forest office. Josh Pedersen posted the completed chapters to the Augusta Times, Leader Telegram, Face Book, and on the county's website to allow for public comments. Public participation has been minimal. Furthermore, six more chapters have been posted to the county website. Josh Pedersen plans to complete the final two chapters by the end of January to be available for the next committee meeting. The committee requested paper copies of the latest chapters to be mailed to each member. Finally, because the 15-year plan calls on the advisory committee to take a significant roll in reviewing the plan, the advisory committee will be contacted to reconvene. Josh Pedersen gave an update on the 15-year plan.

The committee reviewed the 2020 Timber Revenue Report. Timber sale revenue, after all the accounts have been reconciled for 2020, to be just a little under budget from the original budgeted target amount of 1.060,000 million. The 2021 year has started out with lots of timber cuttings taking place.

Further discussion was made regarding the 2021 Work Plan which was approved during the last committee meeting. Chair Stelljes commented on Lake Eau Claire Handicapped boat landing project and how to utilize the Huber Program for future projects. Josh Pedersen and Jody Gindt are planning to refresh the plantings in the garden area around the sign and bench named after Judge Peplau. It was mentioned that Josh should take more credit for improving the horse trails, and for mowing and making the Expo Center ready for the fair. Additional discussion was made regarding priorities going forward and it was decided to add these priorities as a topic of discussion for another meeting (things like upgrading the restroom partitions, a temporary fix, vs building a new restroom and upgrade the septic system).

Josh Pedersen read, in his Director's Report, a heartfelt letter from Roger King of the Chippewa Valley Grouse Dog Association (CUGDA) thanking the Parks and Forest Department and the committee for the continued support of their organization. DUGDA has donated \$1,000 for road improvements around the Channey and Canoe Landing. Over the last few years, the Chippewa Valley Grouse Dog Association has donated over \$4,500.

Committee Updates: Josh has been directed to follow up on the draft for the long-term agreement with the fair which is currently being reviewed by our legal counsel. Chair Stelljes will forward a guide on climate change for Wisconsin forest to all members for their information. Chair Stelljes will send a card to the family of former member Bruce Willett on behalf of the committee extending their condolences.

The next meeting date was set for February 8, 2001, at 5:00 PM virtually.

The meeting was adjourned at 6:43 p.m.

Respectfully Submitted by,

Winnie Parker
Committee Clerk
Administrative Specialist III – Parks & Forest

MINUTES

Eau Claire County

• Committee on Parks & Forest •

Monday, February 8, 2021

5:00 p.m.

Virtual Meeting

Present: Kevin Stelljes, Joe, Knight, Missy Christopherson, Gary Gibson, Tami Schraufnagel

Others Present: Josh Pedersen – Director, Jody Gindt – Supervisor, Winnie Parker – Administrative Specialist III (Committee Clerk), Kyle Johnson – DNR County Forest Liaison, Don Edberg – Wisconsin Highschool Cycling League

Chair Selljes called the meeting to order at 5pm and confirmed public posting of the meeting.

Verbal roll call was taken by the committee clerk and is noted above under present.

No members of the public were present.

The minutes of January 11, 2021 were not included in the Agenda Packet and therefore will be reviewed at the next regularly scheduled Committee Meeting.

The next meeting date was set for **March 8, 2021, at 5pm** virtually.

A special meeting to discuss the 15 Year Plan was set for **March 1, 2021, at 5pm** virtually.

Don Edberg presented a proposal from the Wisconsin Highschool Cycling League (WHCL) to hold an annual cycling race on the grounds of the Expo Center and Lowes Creek Park to be held September 25 and 26, 2021. This event would close both venues to the public. Edberg explained that WHCL adheres to strict Covid recommendations guided by the CDC and local officials as well as general safety guidelines for events such as this. They are hoping to have a regular season this year with five (5) total events much the same as the one he is proposing at the Expo Center in Eau Claire County.

Last event they had in 2019 through Eau Claire County Parks and Forest included approximately 660 participants and their league has grown 20% since then. Therefore, Edberg expects around 1,000+ participants (especially when you include parents and coaches) at this year's event which will bring in significant revenue for the community at large.

Edberg expects around 200 tents and RV's. In the past they have had events whereby camping was not permitted. They find that parking then becomes an issue especially when you consider all the RV's present. It is WHCL's intent to take care of ALL their own waste including portable restrooms.

Kevin Stelljes emphasized the need for the Parks and Forest Department to strive to "normalize" and unify the handling of all contracts, being consistent with all events reserved, especially with regards to expenses and safety. Therefore, in keeping with other reservations and the fee schedule, Edberg agrees to pay the non-profit fee of \$400 per day and waive the normal \$5 daily admission

but charge \$2 per participating cyclist. Furthermore, the WHCL would also pay the going rate for the 20 campsites on the premises. Camping would therefore be staffed and run by volunteers of the WHCL. Josh Pedersen suggested that WHCL would need to empty refuse once per day and clean the bathroom facilities two times per day.

Tami Schraufnagel moves to approve the WHCL's proposal to rent the Expo Center grounds and the Lowes Creek Park on September 25 and 26, 2021, for the non-profit rental fee to use the grounds including the cost of the 20 campsites and a \$2 per participant fee, pending Covid regulations working with the city counsel and the local health department to ensure the safety of all participants as well as working with Josh Pedersen on all the details of the event. Motion passed unanimously.

The Committee discussed the proposal to name a wilderness area to honor Bruce Willet, former Parks and Forest committee member and county board chairman of Eau Claire County. This proposal seems fitting because of all the work Willet did to secure more wilderness area in Eau Claire County. Kevin Stelljes suggests a strip near Beaver Creek, some 250 acres which is hemmed in on all sides by private property and the Eau Claire River with only one access point on County Road K. This area has many characteristics of a natural looking forest which has been untouched for some time because of the Red-shouldered Hawk, a threatened species in the past.

The biggest "glitch" is the snowmobile trail that runs through this area. There was discussion about making the existing snowmobile trail an exception to the County Code. Parking may be a problem as County Road K is a busy corridor and the County Code prohibits parking on wilderness land. The land was thought to not be able to log but Kyle Johnson confirmed that the land was logged once in the 90's and three times in the 80's. Logging may be possible given permission for access from one of the local private property owners. In addition, County Code also prohibits hunting on wilderness designated land which could pose a problem as the Parks and Forest Department does not necessarily want to limit the already established hunting in the County.

These issues may be more "headaches" than it is worth and perhaps we need to keep searching for another area to honor Bruce Willet. Joe Knight suggested another spot near Dell's Pond. Kevin Stelljes suggest the Committee keep searching and to bring their ideas to the next meeting. Josh Pedersen mentioned that this would be a great issue the Advisory Committee could research and bring forth their finding to the Committee.

Refund and Reservation Policy was reviewed for the 2021 season. Stated in County Code 16.30.40 Section C an assertion was made to issue a full refund if there was a health declaration handed down by the federal, state, or local government. It is expected that the declaration be extended through April 15. There is a six (6) step process involved in processing these refunds which accounts for additional man hours. Kevin Stelljes stated that we revert to the pre-Covid policies for handling refunds once the existing declaration expires.

Concerns were brought up regarding our normal opening date of May 15 for reservations, opening concessions, sanitizing bathrooms, the sale of ice and firewood, and renting equipment. The Committee suggested to Josh to use his discretion when it comes to operations and to go ahead and open May 15, as scheduled unless there are further mandates handed down from the authorities.

There was brief discussion of Chippewa Valley Trailriders (CVTR) report. Joe Knight asked if the horse riders would object to the bird hunters sharing the trails, but Kevin Stelljes said that the trails for bird hunters, dog and horse trails are changed often enough that it does not seem to be a problem. ACTION: Josh will follow up with the National Rifle Club about their being delinquent on their annual report.

Approval of the Emergency Fire Wardens (EFW) – To allow for more locations for in-person permit acquisitions from the public, the Committee needs to approve the list to authorize Emergency Fire Wardens for the prevention and suppression of forest fires in the county for 2021 in the Town of Seymour and the Town of Bridge Creek, Ludington, Wilson. Joe Knight moves to approve the sites and Emergency Fire Wardens listed for in-person permits. All in favor, none opposed.

The drafts of the final chapters of the 15 Year Plan were sent to the Parks and Forest Committee as well as the Advisory Committee. Please send comments directly to Josh Pedersen via email by the February 28 and highlight topics for further discussion. Josh will respond to some comments that he can address directly and compile a master list of discussion topics for further debate at the special meeting of March 1, 2021, at 5pm.

Joe Knight asked about the Advisory Committee status. Josh Pedersen informed the Committee that there are 11 spots on the Advisory Committee with seven (7) spots currently filled which leaves four (4) vacancies. The members of the Advisory Committee have a variety of experiences and expertise that they bring to the “table” and given more direction from the Committee could better utilize all that they have to offer. For instance, the research on a location the Willett Wilderness Proposal. They have reconvened and are reviewing the 15 Year Plan and will be included in the March 1 special meeting. The Committee should take a different approach than they have in the past for recruitment and perhaps rely more on word of mouth and personal invitations to consider the possibility for individuals to be on the Advisory Committee.

Josh Pedersen in his Director’s Report reported on the Fourth Quarter Financials. These figures will still change as more revenue is coming in due to timber sales and grants. There is a \$412,000 surplus mostly due to expenditure cuts across the board. Many improvement projects such as sidewalk repair, tree trimming, parking lot repairs, and playground improvements have been put on hold because of the uncertainty of Covid. Jody Gindt stated that we are mainly in maintenance mode when it comes to projects like these. Limited summer staff restrictions what we can accomplish during the summer, but we are doing our best to create the best and safest atmosphere at each facility. Even though the 2021 budget does not account for many projects like these they should not be put off indefinitely because by doing so we develop bigger issues the longer we wait. Therefore, the Committee should consider future improvements as finances become available.

In addition to the 15 Year Plan, Josh suggested considering a 20–25-year plan that serves to guide the capital improvement projects as a whole. When considering short-term or long-term projects they will be consistent with and in conjunction with all the other parks plans, looking at the system as a whole.

Joe Knight asked about providing Coon Fork with a credit card reader because it has been cumbersome to use a credit card when making reservations at the park. Josh Pedersen said adding a credit card reader was as simple as adding this feature to our account and getting a reader out there. To add a kiosk system to each park for the public to use to process daily and annual park fees

would cost the county somewhere between \$9,000 and \$15,000 for each location. These units would be like the ones used at places like public parking lots and would be a capital investment.

The third party who had an interest in managing the Expo Center has withdrawn their intent.

Kicking Kids had their event this evening and it seemed to be going well. The first scheduled event was canceled due to Covid and lack of good snow conditions.

The meeting was adjourned at 6:50pm

Respectfully Submitted by,

Winnie Parker
Committee Clerk
Administrative Specialist III – Parks & Forest

MINUTES

Eau Claire County

• Committee on Parks & Forest •

Monday, March 1, 2021

5:00 p.m.

Virtual Meeting

Members: Kevin Stelljes, Joe, Knight, Missy Christopherson, Gary Gibson, Tami Schraufnagel

Others: Josh Pedersen – Director, Jody Gindt – Supervisor, Jake Tumm – Forester, Winnie Parker – Administrative Specialist III (Committee Clerk), Kyle Johnson - WDNR Liaison Forester, Laura Hurd – Parks & Forest Advisory Board, Mike Lea – Parks & Forest Advisory Board

Kevin Stelljes called the meeting to order at 5pm and confirmed public posting of the meeting.

No members of the public were present.

Director Pedersen gave the sequence of events for completion of the 15-Year Plan.

- County Forest Specialist, liaison who oversees state and county public land, review
- Required wording revision
- Approval from the Committee
- Public comment period
- Forward completed document to the County Forest Specialist

Chapter 100

115 There is a member from WCFA who represents Eau Claire County's interest on the Silvicultural Guidance Team.

120 Consult with Corporation Counsel for the correct interpretation of "enforce" vs "review." It was clarified that the Counsel as a whole has authority, but individuals do not.

125.1 Eau Claire County, historically, provides more revenue (15%) than is required by state statutes (10%). It was resolved to have the document reflect what we are currently paying and review these rates every five (5) years. The next review will be in 2026, and a reminder will be added to staff calendars.

125.1 The statement about 1963 is redundant, mentioned in two places. One of the two will be removed. Also, an explanation regarding the change from the 10-Year plan in 2005 to the 15-Year Plan will be added to the text.

125.3 Text will be added to the document here regarding how climate change affects the forest and the use and maintenance of roads and culverts for environmental events such as flash flooding.

Wording in this section should reflect a more balanced educational approach. Educate the public on the pro's and con's on various forestry practices.

The question was then raised as to the educational efforts of the department. The educational efforts are on-going by the staff who take opportunities when they come up, most frequently by the local schools.

Also, in this section, change of the word "conflict" to "concern." When the public witnesses clear-cutting, for example, they are concerned, and it is in our best interest to educate the public about best forest management practices.

Finally, Kevin Stelljes votes to take the word "trend" out of the language and to add "species that include..., have all gained foothold..." Josh reminded the Committee that this document came from a "canned" program and although we have some discretion as to the wording, much of the verbiage must remain the same.

Chapter 200

205.1 The Parks and Forest Department should work with the sustainability director regarding policies related to the counties goal of being as carbon neutral as possible. Also, the question was raised as to whether we could sell our carbon credits as a means of revenue. Joe Knight will work with Josh on the verbiage in this section.

220.1 ACCOUNTS – Wording should reflect that "under the guidance of best practices dictated by our central finance department." Also, we will then remove the account number listing as it is too vast and restrictive to include in this document. A more general statement will be made.

225.1 It was noted that any staff person is capable of writing Violation Notices. Joe Knight mentioned that we have, at this time, a limited staff. In 2019 we had more staff to handle both the park maintenance, clean-up, and enforcement. In 2020 those numbers were reduced. While we do have a few more staff in 2021 than in 2020, it was suggested that we should consider adding a position to the payroll to oversee enforcement. This person could also do ATV patrol, etc. By doing so, 25% of their salary could come through the grant program.

230 Although the Expo Center and Lowes Creek Park are not a part of the Forestry 15-Year Plan per say, they will be mentioned in this section as property the department manages.

Chapter 300

300.2.6 With regards to inventory of the forest, no survey has been conducted and the county would probably have to hire this to be done. Kyle Johnson stated that this is not something the DNR has the capacity to do. Joe Knight suggested that possible we could ask a grad student to conduct a study. Kevin Stelljes suggested that we should add a statement that expresses our intent and desire to conduct a survey.

300.3.2 Add language in this section that expresses the Parks and Forest intent to be proactive in not only taking opportunities to educate the public when they arise, but to also log when doing so. Missy Christopherson suggested that we could add something like a podcast to our efforts. Kyle Johnson shared that the DNR already has wonderful podcast that address a variety of topics that could be added, periodically, to the face book page.

Chapter 400

415 The Forestry Committee has used a stewardship committee as a vetting tool within county forest land acquisitions.

460.1 The DNR likes to see a two to one (2:1) ratio as a starting point when the county entertains the options to sell or trade property. In addition, the transaction should always benefit the public when considering such dealings. The DNR has a three-level review process for these types of contacts. Most counties seem to be using this 2:1 ratio as a starting point.

460.6 The text in this section should reflect that sale proceeds would be used to by additional forest land.

Chapter 500

Land Management Use – Advertising is done via Newspaper, website, and direct mailing of bid packets to our active logger list. These advertising options adequately satisfy the DNR’s expectation.

505.8.3 Currently there are two (2) year contract that give loggers options for extensions. Often there are sales that do go beyond four (4) years; therefore, we have added language for a built-in increase.

505.8.5 “Other cost” vs “Unforeseen cost”

505.8.7 Payment Schedule – The Committee discussed the merits and logistics of billing more frequently. It was determined that billing once per month was the most ideal considering best practices to maximize cash flow. Contractors in “good standing” means those who are current on payments, following the contract as stated, carry current insurance and have on file up to date w-9’s, etc. Currently, Eau Claire County Parks and Forest Department’s contractors are all in “good standing.” A report of aged invoices could be maintained on “Report Central” for the committee’s review.

505.8.15 After discussion regarding “wetlands and 15-foot filter strips of land” and hearing from Kyle Johnson from the DNR, it was decided to leave the language here as is.

520.4 Military Maneuvers – When ROTC groups and the like want to use Lowes Creek or Tower Ridge Parks we suggest that LL Phillips be used instead as it is the better option for the public while they are in use. Also, a written agreement is necessary prior to any events such as these which enables the Parks and Forest Department to inform the appropriate individuals and allows for any preparation necessary.

Page 25 A fee of \$200 is the common standard, but the Parks and Forest Department may elect to waive or increase these fees as deemed necessary.

Chapter 600

610.3.11 Spraying for gypsy moths is not actually spraying, but rather a release technique of pheromones which suppress the outbreak of insects according to Kyle Johnson from the DNR. If an actual outbreak of insects happens, then insecticides would be used at the descension of DATCP who's responsibility it is to notify the public when such an event is taking place. It was decided that the committee will make every effort to notify the public when spraying should occur.

Page 600-7 DATCP is the organization responsible for surveys. The last survey was taken in 2004.

610.5.3 When it comes to invasive species, Jacob Tumm indicated that the Parks and Forest approach to fighting these sorts of "battles" should be focused primarily on the ones we can "win." The department continues to look for areas where the problems with invasive species can either be mitigate or eradicated so as to preserve optimal forest health within a reasonable cost benefit and not let the invasive species get a foot hold.

Page 600-9 Assessing infection sites are ongoing as foresters are in the field.

It was decided that next week's meeting (March 8, 2021) would reconvene at 4:00pm rather than 5:00pm to further discuss the rest of the 15-Year Plan as well as items on the regular agenda.

The meeting was adjourned at 7:15pm.

The next meeting date was set for March 8, 2001, at 4:00pm, virtually.

Respectfully Submitted by,

Winnie Parker
Committee Clerk
Administrative Specialist III – Parks & Forest

FACT SHEET

TO FILE NO. # 20-21/120

Eau Claire Energy Cooperative is requesting two easements to place utility lines underground. One easement in the Town of Bridge Creek along ND Court and one easement in the town of Ludington along ND Lane. In order to replace the overhead utility lines with underground utility lines Eau Claire Energy Cooperative requires and easement.

This would be highly beneficial to the Cooperative and its Members. Additionally, the removal of overhead utility lines allows natural vegetation to return to the property.

FISCAL IMPACT: Eau Claire Energy has offered to pay twenty-five dollars (\$25.00) per easement. This has a fifty dollar (\$50.00) positive fiscal impact.

Respectfully submitted,

Josh Pedersen
Parks and Forest Director

2
3 GRANTING UTILITY EASEMENTS TO EAU CLAIRE ENERGY COOPERATIVE IN
4 SECTION 5, T26N, R6W, IN THE TOWN OF BRIDGE CREEK AND IN THE TOWN OF
5 LUDINGTON

6
7 WHEREAS, Eau Claire County owns county forest land known as Lake Eau Claire County Park; and

8
9 WHEREAS, Eau Claire County lands are administered by the Parks and Forest Department; and

10
11 WHEREAS, Eau Claire Energy Cooperative is requesting easements to the Lake Eau Claire County
12 Park area to remove overhead utility lines and to install new utility lines underground; and

13
14 WHEREAS, Eau Claire Energy Cooperative would replace existing overhead lines with underground
15 lines northeasterly from the easterly side of ND Court to ND Loop in the town of Bridge Creek; and

16
17 WHEREAS, the areas affected by the Bridge Creek easement are described and set forth in the
18 proposed easement and attached as Exhibit "A" and "B;" and

19
20 WHEREAS, Eau Claire Energy Cooperative would replace existing overhead lines with underground
21 lines north northeasterly from ND lane along the west right-of-way in the Town of Ludington; and

22
23 WHEREAS, the areas affected by the Ludington easement are described and set forth in the proposed
24 easement and attached as Exhibit "C" and "D;" and

25
26 WHEREAS, Eau Claire Energy Cooperative offers to purchase the utility easement described for the
27 sum of twenty-five dollars (\$25.00) per easement; and

28
29 WHEREAS, the utility easement allows right of use and access for service.

30
31 NOW, THEREFORE, BE IT RESOLVED that the Eau Claire County Board of Supervisors grant
32 easements to Eau Claire Energy Cooperative for the purpose of removing overhead lines and
33 installing underground utility lines in the Towns of Bridge Creek and Ludington for the sum of
34 twenty-five dollars (\$25.00) per easement; and

35
36 BE IT FURTHER RESOLVED that the County Clerk is authorized to sign all documents necessary
37 to transfer the aforementioned easement to the Eau Claire Energy Cooperative.

38
39 I hereby certify that the foregoing
40 correctly represents the action of the
41 Committee on Parks and Forest on
42 March ____, 2021 by a vote
43 of ____ for, and ____ against.

44
45 _____
46 Kevin Stelljes, Chair
47 Committee on Parks and Forest



UTILITY EASEMENT AGREEMENT

EAU CLAIRE COUNTY

(hereinafter called the "Grantor"), and any lienholder executing this easement, for a valuable consideration, does hereby grant, warrant and convey unto EAU CLAIRE ENERGY COOPERATIVE, 8214 US Highway 12, FALL CREEK, WISCONSIN, 54742, a cooperative organized under Chapter 185 Wisconsin Statutes, hereinafter called the "Cooperative",

its successors and assigns, with full right to lease, sublet, and license its rights hereunder, the perpetual right, privilege and easement to enter upon the rights of way described hereinafter, and to construct, operate, repair, maintain, relocate, reconstruct, and replace over and under the surface thereof, lines for the transmission and distribution of electric energy, petroleum products, and communications signals.

Said easement shall consist of two distinct rights-of-way, the service easement and the distribution easement. The service easement may cross any of Grantor's lands, described below, for the purpose of bringing electrical service from distribution lines to the service entrance of any electrical service on the premises. The distribution easement shall be for lines which are now, or in the future become, part of the system for serving Cooperative members in addition to Grantor. Both easements are further described herein.

SUBDIVISIONS: If Grantor's land is subdivided and utility easements are shown on the subdivision map, this easement includes all such "Utility Easements." If not included in said "Utility Easements," this easement includes a strip of land fifteen feet wide wherever a boundary of such lot abuts a public right-of-way and a strip six feet wide along each other boundary of each such lot.

COOPERATIVE'S FACILITIES: "Lines" includes cable, poles, anchors and guy wires, conduits, transformers and all accessories and appurtenances which the Cooperative determines to be necessary and appropriate therefor, whether above or below the ground and shall remain the property of the Cooperative which shall have the right to inspect, rebuild, remove, repair, improve and make changes, alterations, substitutions and additions in and to its facilities as it may from time to time deem advisable. The Cooperative may place signs on the easement for the purpose of monumenting the easement area.

ACCESS: This easement also grants the Cooperative the right of access to any described easement area through, over, and across other adjacent lands of Grantor, provided that said access shall be by a route which, in Grantee's judgement, will cause the least practical damage and further provided that the Cooperative will repair, restore, or reasonably compensate Grantor for any damage resulting from such use of adjacent lands.

SERVICE EASEMENT: Wherever the service easement contains overhead lines, it shall be 30 feet¹ wide. Wherever the service easement contains underground lines, it shall be 15 feet¹ wide. The center line of the service easement, which may be relocated from time to time, shall be the electrical service line running from the distribution easement to the service entrance on the premises served.

DISTRIBUTION EASEMENT: Wherever the distribution easement lies adjacent to a public highway, it shall be a strip of land 15 feet¹ wide if the line is single-phase and 20 feet¹ wide if the line is now or is later upgraded to three-phase, even if the highway is changed or relocated. In other areas, whenever the distribution easement contains overhead lines, it shall be 30 feet¹ wide if the line is single-phase and 40 feet¹ wide if the line is now or is later upgraded to three-phase. Wherever the distribution easement contains underground lines, it shall be 20 feet¹ wide. The center line of the distribution easement shall be the center most conductor of the line unless the easement is described otherwise on the reverse hereof or an attachment hereto.

This easement also includes any location used by the Cooperative at any time to place one or more anchors on Grantor's land outside the easement strip to support the Cooperative's facilities constructed within the defined easement strip, and the area necessary for service of said anchor which is defined as a circle with a radius of 10 feet centered on any such anchor facilities and a strip twenty feet wide between that anchor and the foregoing easement, the center line of which shall be a line on the ground directly beneath the guy line attached to said anchor.

OVERHEAD LINE SAFETY: If any of said facilities are constructed above the ground, the Cooperative may, by chemical, mechanical or other means, cut, trim and control the growth of vegetation within the easement and may cut down or trim from time to time all dead, weak, leaning or dangerous trees or limbs on lands adjacent to the right-of-way, which could strike the wires in falling, as it deems necessary or appropriate.

UNDERGROUND SAFETY: If any of said facilities are constructed in or under the ground, the Cooperative may excavate the soil within the easement described herein, and remove trees, rocks and other obstructions, as necessary,

Return to:

Eau Claire Energy Cooperative
8214 US Highway 12
P.O. Box 368
Fall Creek, WI 54742

Parcel No: 002108408000

W.O. Number: 21004

¹Unless changed in this footnote:

Service Easement _____ Overhead _____ Underground _____ Easement Width _____
Distribution Easement _____ Overhead _____ Underground _____ Easement Width _____

for the construction, maintenance, repair, replacement, safety or operation of said line or lines. No owner or occupant of the land may dig or excavate within the easement, or permit others to do so, except as permitted by the Cooperative.

GRANTOR'S USE: The land within the easement may be used for any purpose not inconsistent with the rights granted, provided such use does not interfere with or endanger the construction, operation and maintenance of the Cooperative's facilities. However, the easement shall at all times be kept clear of buildings, structures, obstructions or any condition which violates the National Electrical Safety Code, the Wisconsin Electrical Code, or the safety regulations of the Cooperative. Once lines have been constructed or installed, the surface elevation over or under said lines may not be altered by more than six inches unless permitted in writing by the Cooperative.

BINDING AGREEMENT: This conveyance is binding on and inures to the benefit of the heirs, representatives, assigns, successors, and grantees of the Grantor. The Cooperative reserves the right to license, permit, or otherwise agree to the use of the easement by any person or entity for the transmission of energy or of communication signals of any kind. The Cooperative reserves the right to charge for such a license, permit, or agreement.

Additional space for legal description or special provisions:

Section 05, Township 26 North, Range 06 West

[Inapplicable unless filled in] Easement located on the N S E W (circle one) _____ feet of:

SW-NW EX LAKE EAU CLAIRE & EX 1ST ASR PLAT OF LAKE EAU CLAIRE NORTH, EX COM AT SW COR OF SD 40 TN NLY 165' TO POB TN NLY 426' TN ELY 59' M/L TO WLY R/W LN OF CTH OO TN SLY 221' M/L TO INTER OF WLY R/W LN OF CTH ND TN SWLY 224' M/L TN N45*W M/L 20' M/L TO POB & CONT 0.53 AC M/L, EX COM AT SW COR OF SD 40 TN NLY 90' M/L TO WLY R/W LN OF CTH ND & POB TN NLY 75' M/L TO PT 165' NLY OF SD SW COR OF SD 40 TN S45*E M/L 20' M/L TO WLY R/W OF CTH ND TN SWLY ALG R/W 63' TO POB ENTERED IN CFL BEG 1986 PER 637/706, WITHDREW .54 AC BEG 2008 PER DOC 974608, 26.96 AC IN CFL, LYING IN THE SW-NW, SECTION 4, TOWNSHIP 26 NORTH, RANGE 6 WEST, TOWN OF BRIDGE CREEK, EAU CLAIRE COUNTY, WISCONSIN

If checked here, additional sheet is attached for legal description or other information.

Dated this _____ day of _____, 20_____.

Grantor:

Signature _____

Printed name EAU CLAIRE COUNTY

Signature _____

Printed name _____

Grantor:

Signature _____

Printed name _____

Signature _____

Printed name _____

ACKNOWLEDGMENT

State of Wisconsin)
) ss
 _____ County)

Personally came before me this _____ day of _____, 20_____, the above named EAU CLAIRE COUNTY and _____, to me known to be the person[s] who executed the foregoing instrument and acknowledged the same.

Notary Public, State of Wisconsin _____

My Commission Expires: _____

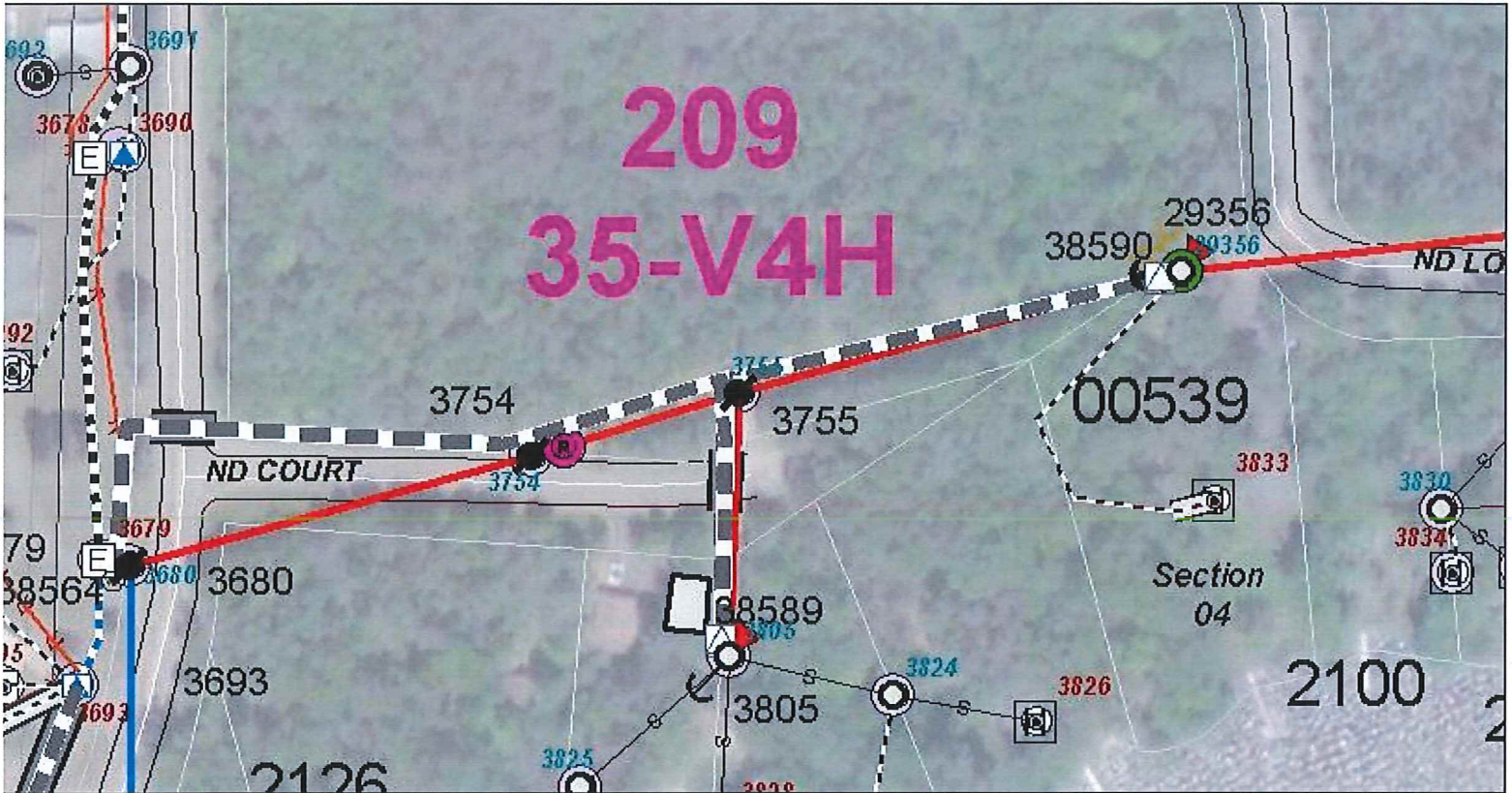
ACKNOWLEDGMENT

State of Wisconsin)
) ss
 _____ County)

Personally came before me this _____ day of _____, 20_____, the above named _____ and _____, to me known to be the person[s] who executed the foregoing instrument and acknowledged the same.

Notary Public, State of Wisconsin _____

My Commission Expires: _____





UTILITY EASEMENT AGREEMENT

EAU CLAIRE COUNTY

(hereinafter called the "Grantor"), and any lienholder executing this easement, for a valuable consideration, does hereby grant, warrant and convey unto EAU CLAIRE ENERGY COOPERATIVE, 8214 US Highway 12, FALL CREEK, WISCONSIN, 54742, a cooperative organized under Chapter 185 Wisconsin Statutes, hereinafter called the "Cooperative",

its successors and assigns, with full right to lease, sublet, and license its rights hereunder, the perpetual right, privilege and easement to enter upon the rights of way described hereinafter, and to construct, operate, repair, maintain, relocate, reconstruct, and replace over and under the surface thereof, lines for the transmission and distribution of electric energy, petroleum products, and communications signals.

Said easement shall consist of two distinct rights-of-way, the service easement and the distribution easement. The service easement may cross any of Grantor's lands, described below, for the purpose of bringing electrical service from distribution lines to the service entrance of any electrical service on the premises. The distribution easement shall be for lines which are now, or in the future become, part of the system for serving Cooperative members in addition to Grantor. Both easements are further described herein.

SUBDIVISIONS: If Grantor's land is subdivided and utility easements are shown on the subdivision map, this easement includes all such "Utility Easements." If not included in said "Utility Easements," this easement includes a strip of land fifteen feet wide wherever a boundary of such lot abuts a public right-of-way and a strip six feet wide along each other boundary of each such lot.

COOPERATIVE'S FACILITIES: "Lines" includes cable, poles, anchors and guy wires, conduits, transformers and all accessories and appurtenances which the Cooperative determines to be necessary and appropriate therefor, whether above or below the ground and shall remain the property of the Cooperative which shall have the right to inspect, rebuild, remove, repair, improve and make changes, alterations, substitutions and additions in and to its facilities as it may from time to time deem advisable. The Cooperative may place signs on the easement for the purpose of monumenting the easement area.

ACCESS: This easement also grants the Cooperative the right of access to any described easement area through, over, and across other adjacent lands of Grantor, provided that said access shall be by a route which, in Grantee's judgement, will cause the least practical damage and further provided that the Cooperative will repair, restore, or reasonably compensate Grantor for any damage resulting from such use of adjacent lands.

SERVICE EASEMENT: Wherever the service easement contains overhead lines, it shall be 30 feet¹ wide. Wherever the service easement contains underground lines, it shall be 15 feet¹ wide. The center line of the service easement, which may be relocated from time to time, shall be the electrical service line running from the distribution easement to the service entrance on the premises served.

DISTRIBUTION EASEMENT: Wherever the distribution easement lies adjacent to a public highway, it shall be a strip of land 15 feet¹ wide if the line is single-phase and 20 feet¹ wide if the line is now or is later upgraded to three-phase, even if the highway is changed or relocated. In other areas, whenever the distribution easement contains overhead lines, it shall be 30 feet¹ wide if the line is single-phase and 40 feet¹ wide if the line is now or is later upgraded to three-phase. Wherever the distribution easement contains underground lines, it shall be 20 feet¹ wide. The center line of the distribution easement shall be the center most conductor of the line unless the easement is described otherwise on the reverse hereof or an attachment hereto.

This easement also includes any location used by the Cooperative at any time to place one or more anchors on Grantors' land outside the easement strip to support the Cooperative's facilities constructed within the defined easement strip, and the area necessary for service of said anchor which is defined as a circle with a radius of 10 feet centered on any such anchor facilities and a strip twenty feet wide between that anchor and the foregoing easement, the center line of which shall be a line on the ground directly beneath the guy line attached to said anchor.

OVERHEAD LINE SAFETY: If any of said facilities are constructed above the ground, the Cooperative may, by chemical, mechanical or other means, cut, trim and control the growth of vegetation within the easement and may cut down or trim from time to time all dead, weak, leaning or dangerous trees or limbs on lands adjacent to the right-of-way, which could strike the wires in falling, as it deems necessary or appropriate.

UNDERGROUND SAFETY: If any of said facilities are constructed in or under the ground, the Cooperative may excavate the soil within the easement described herein, and remove trees, rocks and other obstructions, as necessary,

Return to:

Eau Claire Energy Cooperative
8214 US Highway 12
P.O. Box 368
Fall Creek, WI 54742

Parcel No: 014111204000 &
014111401000

W.O. Number: 21004

¹Unless changed in this footnote:

Service Easement _____ Overhead _____ Underground _____ Easement Width _____
Distribution Easement _____ Overhead _____ Underground _____ Easement Width _____

for the construction, maintenance, repair, replacement, safety or operation of said line or lines. No owner or occupant of the land may dig or excavate within the easement, or permit others to do so, except as permitted by the Cooperative.

GRANTOR'S USE: The land within the easement may be used for any purpose not inconsistent with the rights granted, provided such use does not interfere with or endanger the construction, operation and maintenance of the Cooperative's facilities. However, the easement shall at all times be kept clear of buildings, structures, obstructions or any condition which violates the National Electrical Safety Code, the Wisconsin Electrical Code, or the safety regulations of the Cooperative. Once lines have been constructed or installed, the surface elevation over or under said lines may not be altered by more than six inches unless permitted in writing by the Cooperative.

BINDING AGREEMENT: This conveyance is binding on and inures to the benefit of the heirs, representatives, assigns, successors, and grantees of the Grantor. The Cooperative reserves the right to license, permit, or otherwise agree to the use of the easement by any person or entity for the transmission of energy or of communication signals of any kind. The Cooperative reserves the right to charge for such a license, permit, or agreement.

Additional space for legal description or special provisions:

Section 05, Township 26 North, Range 06 West

[Inapplicable unless filled in] Easement located on the N S E W (circle one) _____ feet of:

SW-NE CFL SINCE 1934, LYING IN THE SW-NE, SECTION 5, TOWNSHIP 26 NORTH, RANGE 6 WEST, TOWN OF LUDINGTON, EAU CLAIRE COUNTY

AND

NW-SE EX LAKE EAU CLAIRE & EX 1ST ASSESSOR'S PLAT OF LAKE EAU CLAIRE NORTH (SD DESC PCL LIES N & W OF CTH OO) ENTERED IN CFL BEG 1986 PER 637/706, AMENDED BEG 1988 PER 695/233 TO 12 AC, LYING IN THE NW-SE, SECTION 5, TOWNSHIP 26 NORTH, RANGE 6 WEST, TOWN OF LUDINGTON, EAU CLAIRE COUNTY, WISCONSIN

If checked here, additional sheet is attached for legal description or other information.

Dated this _____ day of _____, 20_____.

Grantor:

Signature _____

Printed name EAU CLAIRE COUNTY

Signature _____

Printed name _____

Grantor:

Signature _____

Printed name _____

Signature _____

Printed name _____

ACKNOWLEDGMENT

State of Wisconsin)
) ss
 _____ County)

Personally came before me this _____ day of _____, 20_____, the above named EAU CLAIRE COUNTY and _____, to me known to be the person[s] who executed the foregoing instrument and acknowledged the same.

Notary Public, State of Wisconsin

My Commission Expires: _____

ACKNOWLEDGMENT

State of Wisconsin)
) ss
 _____ County)

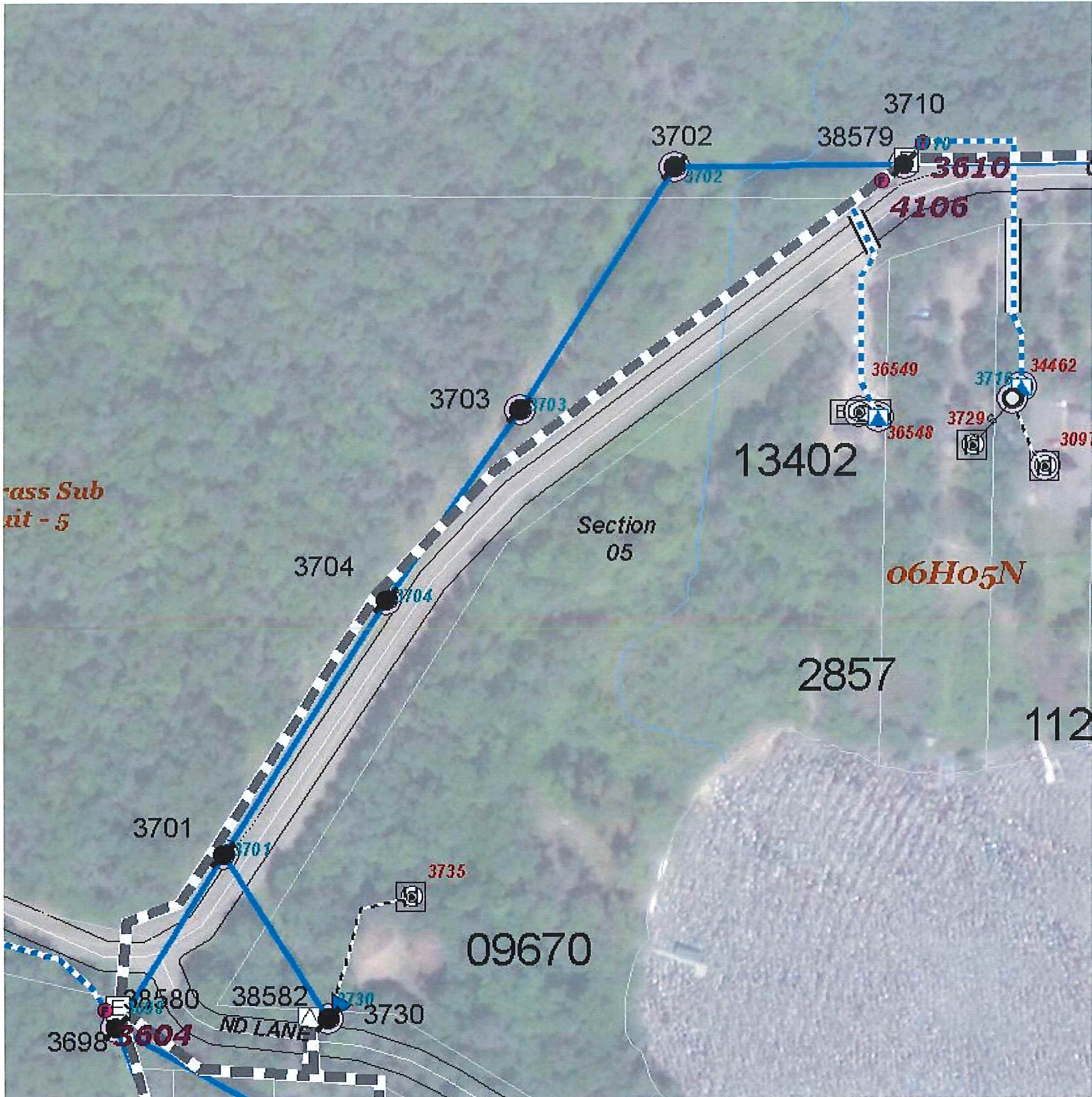
Personally came before me this _____ day of _____, 20_____, the above named _____ and _____, to me known to be the person[s] who executed the foregoing instrument and acknowledged the same.

Notary Public, State of Wisconsin

My Commission Expires: _____

Drafted by: Nathan Karnes, an employee of Eau Claire Energy Cooperative

Rev. 03/2016



FACT SHEET

TO FILE NO. # 20-21/120

Eau Claire Energy Cooperative is requesting two easements to place utility lines underground. One easement in the Town of Bridge Creek along ND Court and one easement in the town of Ludington along ND Lane. In order to replace the overhead utility lines with underground utility lines Eau Claire Energy Cooperative requires an easement.

This would be highly beneficial to the Cooperative and its Members. Additionally, the removal of overhead utility lines allows natural vegetation to return to the property.

FISCAL IMPACT: Eau Claire Energy has offered to pay twenty-five dollars (\$25.00) per easement. This has a fifty dollar (\$50.00) positive fiscal impact.

Respectfully submitted,

Josh Pedersen
Parks and Forest Director

EAU CLAIRE NATIONAL RIFLE CLUB			
12/31/20			
BOARD MEMBERS			
President-LARRY CHRISTENSON		715-210-6112	
Vice President-JAMES MELVILLE		715-723-5839	
Treasurer-LYNN THOMPSON		715-210-4963	
Secretary - TOM ZEMAITIS		715-720-0461	
Executive Officer-MIKE ZWONIARKIEWICZ		715-579-8236	
At Large-VERDUN DVORAK		715-797-6884	
At Large-LAURIE GAPKO		715-834-3897	
<u>FINANCIAL SUMMARY</u>			
<u>INCOME</u>	<u>2020</u>	<u>2019</u>	<u>2018</u>
Membership Dues	\$ 4,990	\$ 3,016	\$ 3,120
High Power Matches	\$ 7,121	\$ 7,978	\$ 5,895
Schuetzenfest Matches	\$ 1,669	\$ 2,664	\$ 2,540
Sight-In Clinic	\$ 1,410	\$ 1,860	\$ 1,860
Nonmember Users	\$ 325	\$ 70	\$ 125
Ammo Proceeds	\$ 10,359	\$ -	\$ -
Youth Program	\$ 1,155	\$ -	\$ -
Donations	\$ -	\$ 302	\$ 560
<u>TOTAL INCOME</u>	\$ 27,029	\$ 15,890	\$ 14,100
<u>EXPENSES</u>			
Insurance	\$ 1,216	\$ 1,200	\$ 1,153
Range Expenses	\$ 5,111	\$ 4,698	\$ 3,442
Electronic Targets (ammo sales)	\$ 9,886	\$ -	\$ -
High Power Matches	\$ 2,064	\$ 3,453	\$ 2,372
Schuetzenfest Matches	\$ 536	\$ 1,794	\$ 1,993
Donations	\$ 270	\$ 800	\$ 800
Real Estate Taxes	\$ 576	\$ 554	\$ 512
Junior Program	\$ -	\$ 1,363	\$ 2,381
Other	\$ 105	\$ 801	\$ 620
<u>TOTAL EXPENSES</u>	\$ 19,764	\$ 14,663	\$ 13,273
EXCESS REVENUE	\$ 7,265	\$ 1,227	\$ 827
CASH ON HAND	\$ 32,988	\$ 25,774	\$ 23,763
Number of Members	74	87	88
Number of Participants in matches	343	416	289
Number at Sight-in Clinic	282	370	382
Numbr of Nonmembers	65	14	25
Member Volunteer Hours	1535	968	800
Days used by Law Enforcement	5	2	0
Days used by National Guard	1	0	12
Number of Safety Incidents	0	0	0

Beaver Creek Earth Week Challenge

April 19-25, 2021



Objective

To encourage sustainable and environmental practices among citizens of the Chippewa Valley. Challenge items are designed to be either free or affordable, and will help you save money in the long run all while working to conserve vital resources. The tasks can also be easily integrated into most lifestyles even after the challenge is over. Participants will create teams and earn points for their “green” activities and be entered to win prizes!

In our first year, we had more than 50 teams comprising 170 people register to participate in the first-ever Earth Week Challenge! For our second year, we had 133 teams registered (which is about a 38% increase!) totaling 462 people, over 1,300 submissions, and almost 3,000 total points throughout the entire week! As we move into our third year with this challenge, we are adding new and improved tasks which can be completed by people of all ages, with fun new prizes as well! Being that we are still in the COVID-19 pandemic, most of our tasks can be completed virtually or while social distancing.

Overview

The Earth Week Challenge will encourage local citizens to team up and engage in sustainable and environmentally focused activities to not only improve our immediate local environment, but to save money and have the chance to win some cool prizes.

How it works: Choose a team. A team can either be a family (Parent(s) + kids) or another group of up to 5 adults. Pick a team name and captain and register by following the link on the Earth Week Web Page. There is no registration fee or direct cost to participate.

There participants will find a list of more than 60 challenge tasks to choose from divided among seven categories: Getting from Here to There, Reduce the Amount You Leave Behind, Don't be an Energy Vampire, Stay Local, Can you Re-Use or Re-purpose it, Turn it Off and Opt Outside, and Be Part of the Solution (Or Join the Cause).

In each category there are various challenge tasks, each task is weighted by points. Tasks are given 1, 3, or 5 points depending on the difficulty of the task. Examples of tasks include: Use public transportation (1 pt), turn off the lights when you leave the room (1 pt), create something from a used material (shopping bag from a t-shirt or bird feeder from a milk carton - 3 pts), take a picture in front of an Eau Claire Chamber Green Business (5 pts).

Thanks to an ECO Grant from 3M, we have a more streamlined system for team registrations and for submitting picture proof by teams. Teams will be able to upload their files directly through Beaver Creek's website on the Earth Week Challenge Page. (beavercreekreserve.org/events). The webpage is in the process of being updated to reflect 2021 information and sponsors.

Questions can be directed to earthweek@beavercreekreserve.org. Teams should keep track of their own points and activities. A .pdf, Word Document, and an Excel document with the full list of tasks will be available for teams to download on Friday, April 16.

How to Win?

After completing 5 points worth of tasks, you will be entered into a drawing for a Beaver Creek prize package that will include a BCR membership, seeds, and other fun eco-friendly items!

Teams that reach 35 points or more will be entered in to a drawing for one of several prize packages that will include items like Triple Play Memberships, gift cards, and much more.

A Special Bonus Drawing will be held for all teams that earn 100 pts or more. This will be a special grand prize that will consist of gift certificates and other items.

Prize packages are still being finalized and will be released closer to the date when registration opens on April 14.

Rules

- 1) Teams can consist of Families (i.e. Parent(s) + Kids residing in same household), Groups (defined as any other group of 5 or fewer adults. Could be roommates, friends, colleagues etc.), and Large Groups (business, school, daycare etc.)
- 2) Teams must register online. A link will be available on the Earth Week Challenge webpage. Registration will open Wednesday, April 14th and close on Sunday, April 25th. There is no cost to register.
- 3) In order to receive the points for an activity, a picture must be taken with team members engaging in the task (not all members are required to be in the photo due to social distancing).
- 4) Photos can be submitted online via the Earth Week Challenge page on Beaver Creek Reserve's webpage. Please be prepared to choose your team name, and challenge task when uploading photos. All photos must be received no later than 4:00 p.m. on Monday, April 26th.
- 5) All prizes must be picked up at Beaver Creek Reserve, and winners will be notified prior to our official announcement.
- 6) By participating in this challenge, all team members agree that Beaver Creek Reserve has the right to share photos via social meeting and for other marketing efforts related to the Earth Week Challenge.

Website

Webpage with sub navigation on Beaver Creek Website

(www.beavercreekreserve.org/events/earth_week_challenge) (webpage will be live by April 1)

Email questions: earthweek@beavercreekreserve.org



NAME
TITLE
COMPANY
ADDRESS

Dear NAME,

In 2019, Beaver Creek Reserve debuted our first ever Earth Week Challenge! We were thrilled with the community's response to this program, with 50 teams and 170 people participating its first year. Then in 2020, we wanted to make the challenge even bigger with community-wide participation from individuals and their families, businesses, and other organizations. With 2020 marking the 50th anniversary of Earth Day, we planned on making the Earth Week Challenge even more impactful for year two! Last year, we had a 38% increase of participation with 133 teams and almost 500 people that registered for the challenge. After the week was over, all the submissions were in, and over 2,800 points were achieved. Being that we were in the start of the COVID-19 pandemic, we used that time to encourage virtual and socially distanced sustainable living while working from home, and we had a great response.

This year, we've added new and improved tasks to the challenge for groups to complete and are working on getting fun new prizes to incentivize community members to "go green." This challenge is meant to encourage sustainable and environmental practices among citizens of the Chippewa Valley, and the best part, it is completely free to sign up! Tasks are designed to be either free or affordable, will help you save money in the long run all while working to conserve vital resources, and eventually be easy to integrate into most lifestyles. Once tasks are completed, groups will be entered into drawings for fun and unique prizes!

Please consider sponsoring this event in some way, whether that's meeting one of our sponsorship levels, helping us promote this event, or giving other donations for prizes! We appreciate all your support in helping us make a difference in the Chippewa Valley community and overall our environment!

Sincerely,

Kristen Giefer
Outreach & Development Coordinator

S1 County Road K | Fall Creek, WI 54742 | Phone/Fax: (715) 877-2212 | Website:
beavercreekreserve.org

Friends of Beaver Creek Reserve is a 501(c)(3) non-profit organization.

VenTek International Budgetary Quotation

Project	Eau Claire County Parks and Forest Dept., WI	Date	3-Dec-2020
Client	Josh Pedersen, CPRP	Client Phone	715-839-4783
Address		Account Mgr.	Sally Donatiello
Contact	Sally Donatiello	Validity	90 days
Email	sallyd@ventek-intl.com	Phone	707-773-3373

Thank You for Choosing VenTek

Part I - Capital Costs - Hardware, Installation, Setup & Services

AUTOMATED FEE MACHINE (AFM)				
Item	Description	Quantity	Unit Price	Extended Price
E1	M600 Pay and Display Includes 1 year Warranty Power Configuration: AC Connectivity: Cellular Payment Mode: Credit Card Acceptance Axiohm Printer-Windshield Sticker Dispensing	1	\$5,900	\$5,900
	Heater	1	\$2,510	\$2,510
	Custom Wrap - Door Only	1	\$350	\$350
	Shipping ¹	1	\$275	\$275
		1	\$300	\$300
AFM		1		\$9,335

Part II - Operating Costs -SaaS Subscription Fee

ANNUAL SOFTWARE SUBSCRIPTION FEES				
Item	Description	Quantity	Unit Price	Extended Price
SaaS	VenTek Software as a Service (SaaS) - User credential for venVUE®, VenTek's web based management system, Secure PCI Level 1 Certified Server on Amazon Cloud for Data Storage & Payment Gateway, and Cellular Connectivity.	1	\$1,140	\$1,140
SaaS Subscription Fee				\$1,140

Automated Fee Machine - Revenue Collection Equipment	\$9,335
SaaS Subscription Fee	\$1,140
Total	\$10,475

WARRANTY				
Item	Description	Quantity	Unit Price	Extended Price
STDW	Standard Warranty: Free Unlimited Tech Support for 3 Months / Warranty Issues for 12 months	Incl.	incl.	incl.
EXTW	Extended 1 Year Factory Warranty (Recommended for years 2+)	1	\$533	\$533
OL1	Onsite Service Calls billed at \$150/hr. Including Time and Material	per hour	\$150	
AH1	After Hours Telephone Support Hourly Labor Rate \$150.00/hr. (Billed in 15 min increments)	per hour	\$150	

Notes:

- Shipping is an Estimate Only - Actual Costs will be billed upon shipment
- Payment Gateway - As a Level 1 PCI Service Provider VenTek offers a Secure Electronic Gateway. This allow VenTek's customers to establish a direct connection between the VenTek System and their Payment Card Processor. VenTek warrants that our Payment Gateway will remain PCI-compliant for the duration of service delivery and that our pricing will be lower than comparable products. Includes Cyber Insurance.
- venVUE System Management, venSTATION Data Hosting and CDMA Cellular Connectivity are billed Annually
- (1) year factory warranty included
- Installation Includes securing the unit to a surface prepared per installation drawing, connecting existing electrical inside the unit, installing software, network programming and configuration, and installation of all parts and peripherals necessary for unit operation.
- Installation Quote does not include Site Prep: Concrete or Conduit Work, Pulling Electrical or Communication Cables or Removal of Existing
- Installation Quote is an estimate based on standard installation. Additional fees billed at time and Material +10%
- Onsite Training is conducted during and/or after installation. If VenTek must come back onsite, time will be billed at \$150/hr. Including travel and
- venVUE System Management training conducted remotely via WebEx
- ADA Compliant for height, control and reach
- All funds due are in U.S. dollars. Terms Net 30 from date of delivery. 1.25% finance charge (15% per annum) applied to balances over 30 days past

VenTek International Budgetary Quotation

Item	Description	Quantity	Unit Price	Extended Price
SP1	Spare 40A Battery	per unit	\$179	
SP2	Spare Credit Card Reader	1	\$450	\$450.00
SP3	Spare Bill Acceptor	1	\$956	\$956
SP4	Spare Coin Acceptor	per unit	\$615	\$615
SP5	Spare venSTATION Controller	1	\$1,775	\$1,775
SP6	Spare venSTATION Display	1	\$755	\$755
SP7	Spare Printers, Including Cable	1	\$1,495	\$1,495
SP10	Spare keypads 1x4	1	\$134	\$134
SP11	Spare keypads 3x4	1	\$180	\$180
SP12	Spare Modem GSM/GPRS	1	\$522	\$522
SP17	Recommended Spares - Configuration dependent	1 per 10	Quote	\$6,882

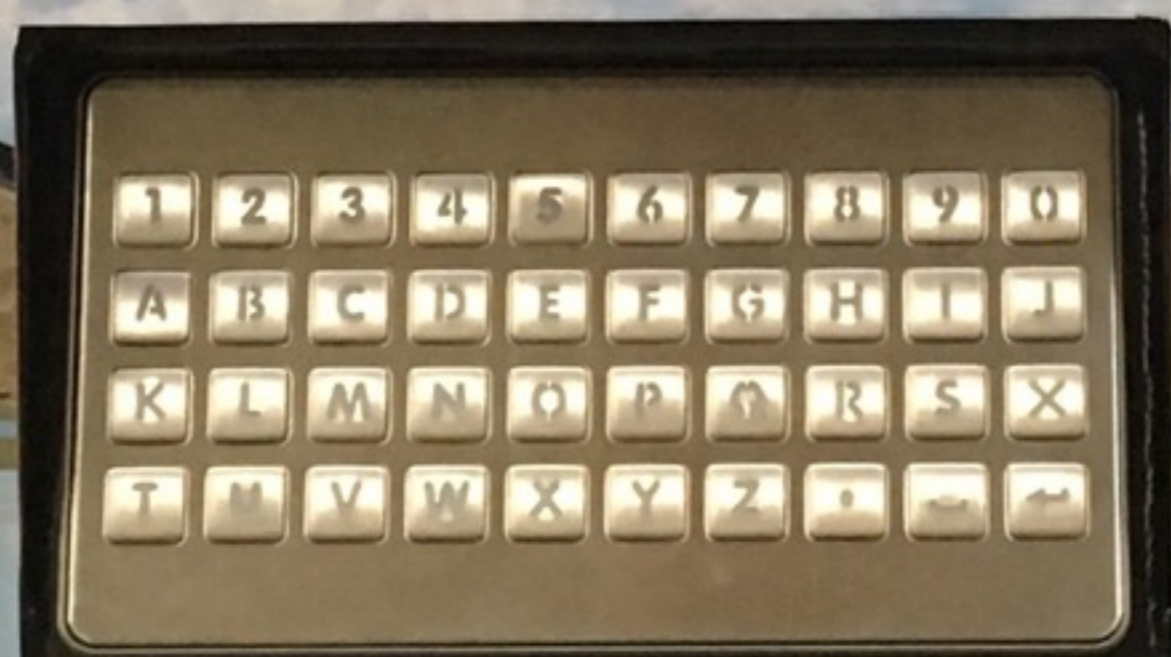
CONSUMABLES				
Item	Description	Quantity	Unit Price	Extended Price
C1	Custom VenTek Annual Pass/Value Cards - Lot of 1000	per card	\$1.50	
C2	Standard Ticket Paper Rolls (Order quantity 10+ rolls) 1" core	per roll	\$55	
C3	Custom Ticket Paper Rolls (Order quantity 55+ rolls) - Estimate only	per roll	Quote	
C4	Custom Sticker Ticket Stock -1500 per roll	1,500	\$1.62	\$2,431.00
C4a	Custom Sticker Ticket Stock - 1500 per roll	3,000	\$0.83	\$2,476.00
C4b	Custom Sticker Ticket Stock -1500 per roll	4,500	\$0.57	\$2,565.00
C4c	Custom Sticker Ticket Stock -1500 per roll	9,000	\$0.30	\$2,700.00
C4d	Custom Sticker Ticket Stock -1500 per roll	21,000	\$0.15	\$3,150.00

PAY HERE

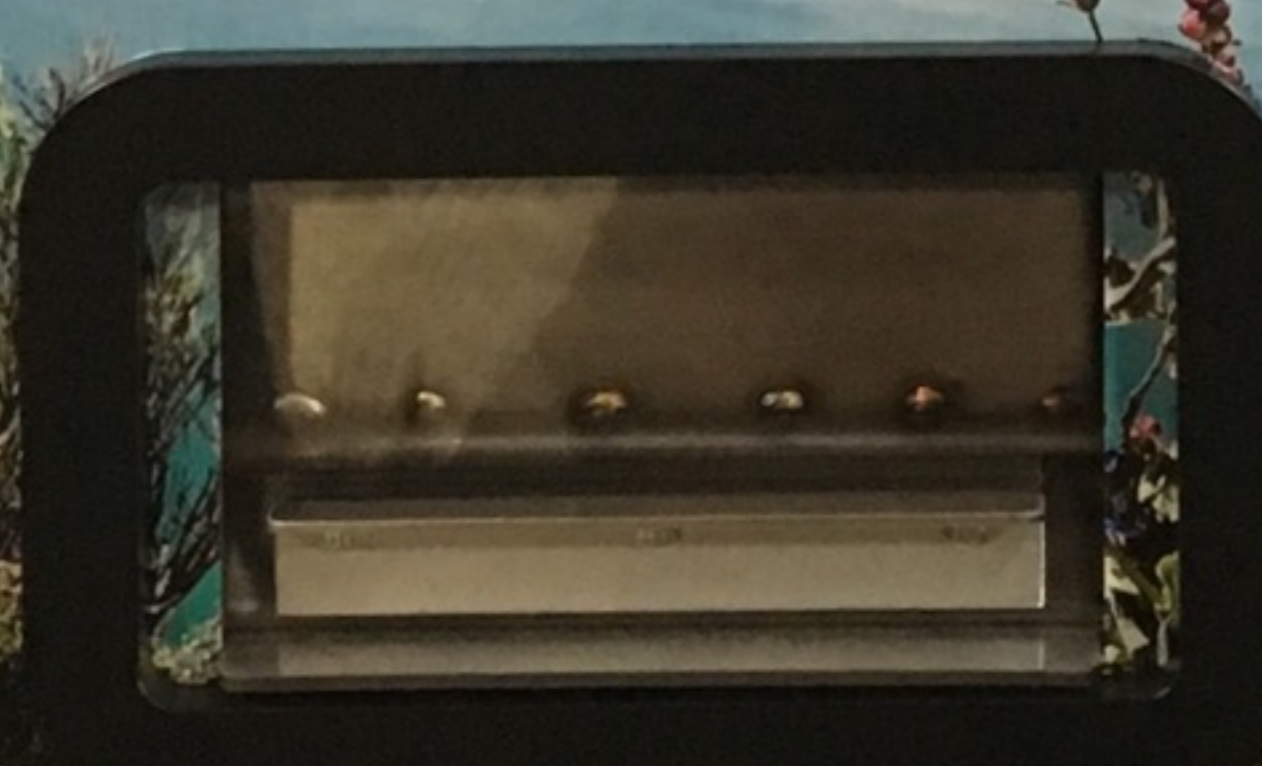
**FOLLOW
DIRECTIONS
ON SCREEN**



**Welcome to
Douglas County
Topaz Lake Park
Campground**



PLEASE TAKE RECEIPT



**Proof of payment
required during your
stay and upon exit**

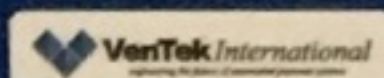
**Facility under HD
surveillance**

**Please complete
separate transactions
for each vehicle**

**This machine
contains no cash**



MACHINE DOES NOT ACCEPT CASH OR COINS



©2018 VenTek International, Petaluma, California • Patent Pending • All Rights Reserved
www.ventek-intl.com



Made in the USA

Model 600

secure and reliable

ENTRY/ANNUAL PASSES

CAMPSITE RESERVATION

BOAT/INSPECTION FEES

REAL-TIME PAYMENT PROCESSING & CENTRALIZED SYSTEM MANAGEMENT

- PCI-DSS Level 1 & PA-DSS Data Security Certifications
- Real Time Payment Authorization & Automated Settlement
- Relational System Database
- Central Communications Facility

PARKS AND RECREATION FEES

- Entry & Annual Pass
- Campsite Fees
- RV Storage & Dump Fees
- Boat Launch Fees
- Inspection Fees
- Electrical Metering

MULTIPLE PAYMENT METHODS

- Coins & Bills
- SmartCards & Value Cards
- Validations: Cards & Remote
- Credit Cards
- Debit Cards
- Electronic Coupons

MULTIPLE VENDING MODES

- Permit Only
- Campsite Reservation with website integration
- Permit & Receipt
- Payment/Credential Gate Access
- Turnstile Access

NETWORK SUPPORT FOR 2 TO 200+

- DSL, Cable, Frame Relay
- Wi-Fi 802.11 (WPA/WPA2)
- Satellite and Dial-up for Remote Locations
- Digital Cellular Wireless (GPRS/CDMA)

REMOTE RATE MANAGEMENT PROGRAMMABLE BY...

- Price & Time Availability
- Informational Screens
- Multiple Choices
- Variable Time Durations
- Times of Day
- Days of Week
- Specific Dates (Special Events)

REAL-TIME LOCAL/ REMOTE REPORTING & NOTIFICATION

- Audit Reports
- Sales Reports
- Cash Collection Reports
- Service Alerts
- Intrusion Detection
- Sales by Product Based Reports



Interface

Large, easy to read LCD display
ATM-style menu driven interface
Custom graphics & colors available

Payment Processing

US & Canadian & International Currency
Customer-controlled electronic pay cards
PCI Compliant Credit Card Processing
VISA, Mastercard, AMEX and Discover
Tokens: Programmable value

Change Giving (Optional)

All Coin Denominations
Programmable Coin Acceptor
600 Coin Capacity Coin Hopper

Ticket Printer

Low maintenance thermal printer
In excess of 5,000 tickets per paper roll

Security

10 Gauge steel with 1/4" steel reinforcement
Maximum security Medeco lock
Audible & remote alarm capability
Sealed cash system
High-strength, Double-locking Coin bag
1,000 Note Double-locking Bill Cassette
Audit reports & Complete Transaction Log History

Dimensions

Approximately 24.5" W x 35" H x 17" D
Full ADA with max keypad height of 54"

Power Sources

110v A/C (w/optional Battery Backup)
Solar - Battery



www.ventek-intl.com

For more information please contact us today
(707) 773-3373 info@ventek-intl.com

Proudly built in the USA

1260 -A Holm Rd, Petaluma, CA 94954