

AGENDA

Eau Claire County

- Land Stewardship Subcommittee of the Land Conservation Commission •

Date: Wednesday, December 2, 2020 **Time:** 12:00 P.M.

via remote access **ONLY.*

**Event link below can be used to connect to meeting and interact (by the chair) from computer or through the WebEx Meeting smartphone app.*

Join WebEx Meeting: <https://eauclairecounty.webex.com>, Meeting ID: 145 017 3249,

Password: hnUwke6Mv37

**Meeting audio can be listened to using this Audio conference dial in information.*

Audio conference: 1-415-655-0001, Access Code: 145 017 3249

For those wishing to make public comment, you must e-mail Greg Leonard at Greg.Leonard@co.eau-claire.wi.us at least 30 minutes prior to the start of the meeting. You will be called on during the public comment period to make your comments.

AGENDA

The Subcommittee will discuss and may act on any of the following items:

1. Call to Order by Chair
2. Roll Call
3. Confirmation of Compliance with Open Meetings Law
4. Public Comment Period
5. Approve Minutes of October 15, 2020 meeting **Pages 2-3**
6. Cascades Easement/ Alternative Access Considerations **Page 4-5**
7. Eau Claire River corridor event **Page 6-10**
8. Eau Claire River Watershed Coalition update
 - a. <https://www.eauclaireriverwatershed.org/>
9. Stewardship Fund balances **Page 11**
10. Member and Staff updates
11. Future agenda items
12. Set Next Meeting Date
13. Adjourn

Prepared by: Jenna Hazelton

Please note: Upon reasonable notice, efforts will be made to accommodate the needs of disabled individuals through sign language, interpreters or other auxiliary aids. For additional information or to request the service, contact the County ADA Coordinator at 839-4710 (FAX) 839-1669 or (TDD) 839-4735 or by writing to the ADA Coordinator, Human Resources Department, Eau Claire County Courthouse, 721 Oxford Ave., Eau Claire, Wisconsin 54703

EAU CLAIRE COUNTY
LAND STEWARDSHIP SUBCOMMITTEE

MEETING MINUTES – THURSDAY, OCTOBER 15, 2020

REMOTE MEETING – EAU CLAIRE, WI

MEMBERS PRESENT: Rick Koziel, Dave Dresel, Kevin Stelljes, Dave Carlson, Larry Jolivette, Glory Adams
MEMBERS EXCUSED: Sean Bohan
STAFF PRESENT: Greg Leonard (Land Conservation Division – P&D)
OTHERS PRESENT: (none)

1) Call to Order by Chair

Chair Koziel called the meeting to order at 12:00 p.m.

2) Roll Call

A roll call was taken; Koziel, Dresel, Stelljes, Jolivette, and Adams were present. Carlson and Bohan were absent during Roll. A quorum was present.

3) Confirmation of Compliance with Open Meetings Law

Koziel confirmed that the open meeting requirements had been complied with.

4) Public Comment Period

None.

(Carlson joined the meeting and was now present.)

5) Approve Minutes of July 8, 2020 meeting

ACTION: Motion by Stelljes to approve minutes as presented. Motion carried on a roll call vote, 6-0-0.

6) Cascades Easement/ Alternative Access Considerations

Alternatives to the Cascades property to gain access the County forest lands including the Brown's property were discussed. Koziel, Carlson, and Stelljes will collaborate on options.

7) Eau Claire River Watershed Coalition update

Koziel and Stelljes provided an update of the Eau Claire River event to be hosted with Landmark Conservancy. Landmark is planning on mimicking their efforts with their St Croix outreach efforts, and specifics will be available after that events preparation is completed.

Leonard provided an update of the Eau Claire River Watershed Coalition's activities by providing a tour of the newly released <https://www.eauclaireriverwatershed.org/> website. This will be a good resource to work in partnership with the River event being planned with Landmark.

9) Stewardship Fund balances

There has been no changes in the Stewardship Fund balances.

10) Member and Staff updates

Inviting Arvid Jereczek, owner of American Express Transport & Excavation, to a future in-person meeting will be the plan for discussions on the first right of refusal.

11) Future agenda items

Cascades alternatives, Eau Claire River event, and the former Huntsinger property will be items for the next agenda.

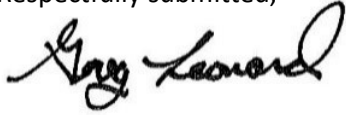
12) Set Next Meeting Date

The next meeting is tentatively scheduled for Wednesday, December 2, 2020 at 12:00 pm.

13) Adjourn

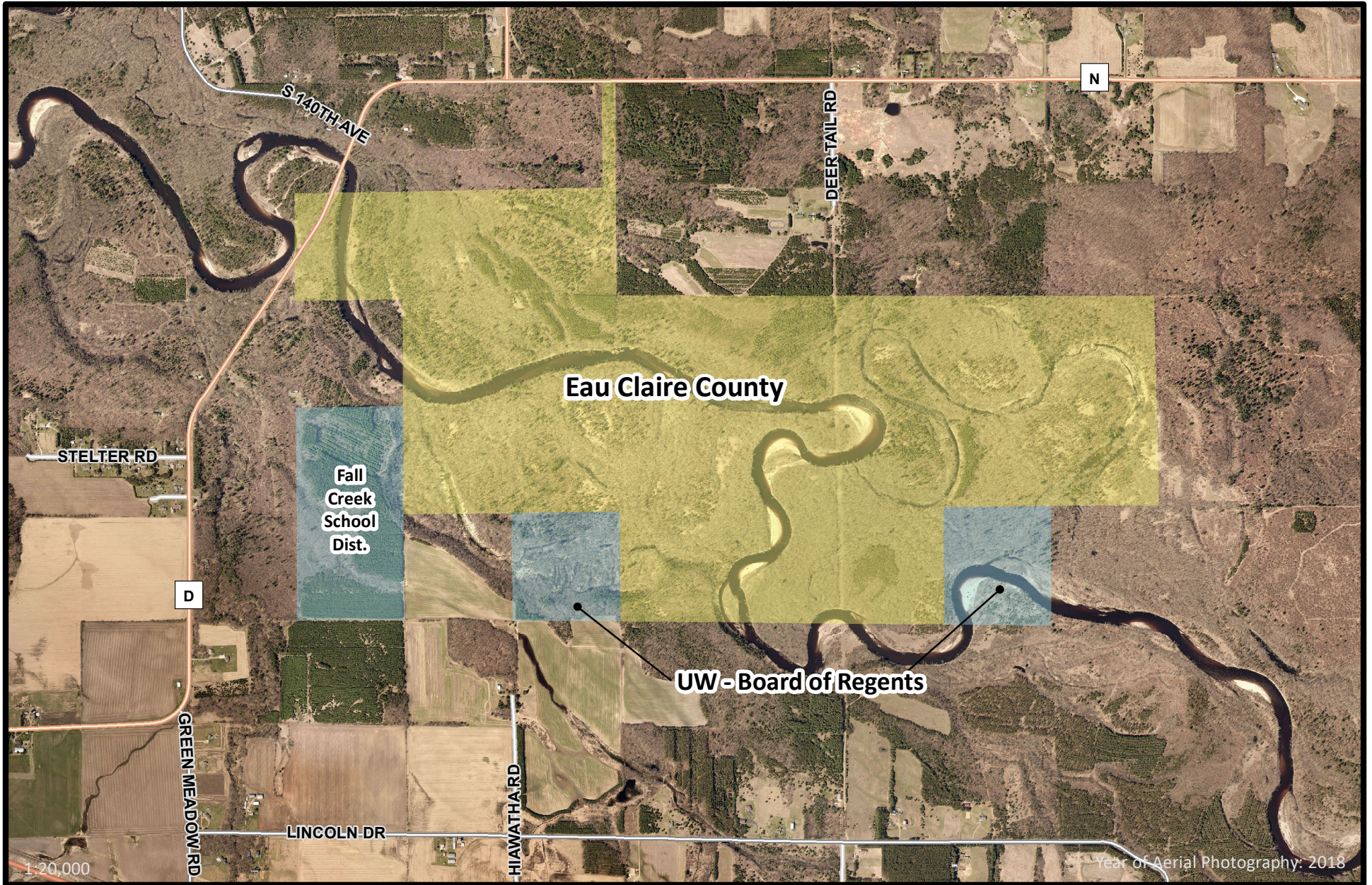
Koziel adjourned the meeting at 1:03 p.m.

Respectfully submitted,



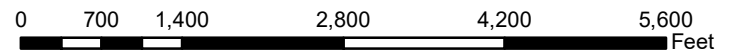
Greg Leonard, Subcommittee Clerk

Draft



Eau Claire County
 Land Conservation Division
 Planning and Development
 721 Oxford Ave
 Eau Claire, WI 54703
 Phone: (715) 839-6226
 Fax: (715) 831-5802
www.co.eau-claire.wi.us

S



N





This map is a collection of public record information and was prepared as an ongoing commitment to provide quality and up-to-date information to the public. This map is intended for information use only. Although significant care has been exercised to produce maps that satisfy mapping accuracy standards, these maps are only as accurate as the source data from which they were compiled. These maps are intended to be advisory and are NOT designed or intended to be used as a substitute for an accurate field survey, as performed by a Wisconsin Credentialed Land Surveyor, to determine precise property location.

Eau Claire County does not warrant, guarantee or make

1:4,443.75

Year of Aerial Photography: 2018



Eau Claire County
 Land Conservation Division
 Planning and Development
 721 Oxford Ave
 Eau Claire, WI 54703
 Phone: (715) 839-6226
 Fax: (715) 831-5802
 www.co.eau-claire.wi.us

Cascades Tissue/Eau Claire County Easement Proposal Concept

Presented by the Eau Claire County Land Stewardship Subcommittee

DRAFT

NOT FOR PUBLIC RELEASE

1,280 Feet



THANK YOU
FOR YOUR
STAMP



LANDMARK
CONSERVANCY

500 East Main Street
Suite 307
Menomonie, WI 54751



WHAT DOES A CLIMATE RESILIENT LANDSCAPE LOOK LIKE?

UPPER NAMEKAGON RIVER:

Open bogs, sedge meadows, and boulders deposited by glaciers.

NAMEKAGON AND TOTOGATIC RIVERS:

Hummocky glacial topography, seeps flowing out of river terraces, jack pine sand barrens and cut banks of abandoned river channels formed after the last ice sheet melted.

ST. CROIX RIVER:

Low flat bogs, bedrock outcrops, and layers of glacial spillway sediments of sand, gravel and boulders.

YELLOW RIVER:

Cold water springs, river meander scars, and wild rice beds.

STRAIGHT LAKE:

Hummocky outwash plains, ice-walled plains that look like flat-topped hills, and upland forests of white and red oak, red and sugar maple, and basswood. Tunnel channels formed by glacial meltwater can also be found here.

Landmark Conservancy is committed to preserving land in perpetuity by protecting significant ecological features and natural habitats. We believe that conserving large, intact areas of land will help terrestrial and aquatic species better adapt to a changing climate.

Landmark is working with the St. Croix River Association to provide options for landowners who want to do more to steward their lands in the watershed. There are numerous actions landowners can consider, ranging from land management practices to improve water quality, controlling invasive species, practicing sustainable forest management, or permanently keeping land in its natural condition through a conservation easement with Landmark Conservancy.

DRAFT

CONTACT US

Landmark Conservancy
500 East Main Street, Suite 307
Menomonie, Wisconsin 54751

Satellite Office in Bayfield

www.landmarkwi.org
info@landmarkwi.org
715.235.8850

Landmark Conservancy is a 501(c)(3) tax exempt organization. All donations are tax deductible to the extent allowed by law.



SPECIAL LAND Deserves Special Consideration



Certain areas of the St. Croix Watershed will be especially important for biodiversity as the climate changes.



LANDMARK
CONSERVANCY

Conserving Wisconsin's natural legacy for everyone...forever

WHY PROTECT THE ST. CROIX WATERSHED?

People have lived in the St. Croix River Watershed for generations, in part because of river access and scenery. The area's natural beauty makes it a desirable refuge for people seeking sanctuary in a busy world, and the special characteristics of this landscape also provide unique habitats for plants and animals.

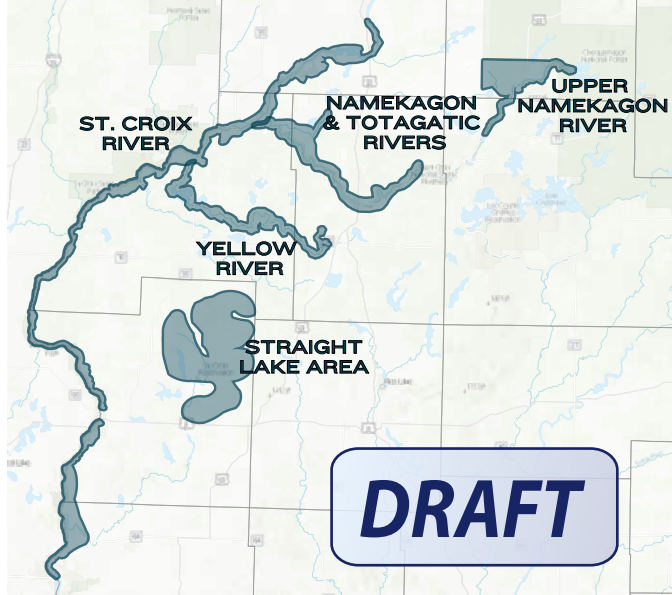
Landmark Conservancy and numerous conservation partners have identified that the St. Croix will continue to be important for biodiversity as the climate changes. Keeping land in its natural state boosts the ability to withstand the impacts of rising temperature and uncertain precipitation, while providing corridors for plant and animal movement as changes in species' range and composition occur.



CONSERVATION PRIORITIES

Many areas within the St. Croix River Watershed have been identified as having climate resilient characteristics including topographic diversity, springs and wetlands, geologic diversity, and soil diversity. Resiliency means it will be better able to tolerate changes in climate, and will be able to continue to support important ecological functions.

FOCUS AREAS FOR ECOLOGICAL RESILIENCY WITHIN WISCONSIN'S ST. CROIX WATERSHED



The St. Croix River Watershed covers 585,735 acres in northwest Wisconsin and east-central Minnesota, and drains into the Mississippi River.

It has diverse high-quality natural ecosystems that remain relatively intact, ranging from northern hardwoods with patchy wetlands, pine barrens, marshes, and various mixed forests and swamps.

Cold water streams support native brook trout and other species.



I am interested in information on:

- Removal and control of common invasive plants
- Planting native trees/shrubs along the stream to protect water quality
- Forest management plan
- Other _____
- Free Site Visit to learn more about my land and ways to steward it
- Conservation Easement Information
- Phone Call from Landmark staff to discuss stewardship opportunities

Name _____

Address _____

City _____

State _____ Zip _____

Phone _____

Email _____



Conserving Wisconsin's natural legacy for everyone...forever.





November 30, 2020

Hello <<First Name>>,

DRAFT

Like you, we believe the Upper Namekagon River watershed is a very special place. Stretching over 100 miles, its abundant streams, lakes and wetlands, and rich forests make it a popular area to live and recreate. This river meanders through a very rich area containing some of the most biodiverse areas in the state. Given its unique features, we hope you will consider playing an important role to protect this area.



We recently mailed you our brochure about the St. Croix River Watershed, and we hope the information was helpful. **If you have not returned your Reply Card, please do so!** Features - such as diverse topography, springs and wetlands, and geologic variety - not only add to its special nature but make the area more climate resilient. Resiliency means the Upper Namekagon River area will be able to continue to support the plants, animals, and natural communities that we all cherish. But only with a little help.

How can you help?

We know that keeping land in its natural condition helps build resiliency. According to the Land Trust Alliance, “Conserved, well-managed land also provides protection from natural disasters, such as floods and drought, while absorbing carbon and keeping it from the earth’s atmosphere.”

We invite you to work with us to protect your land’s natural resources for today and the future. Conservation easements are one way that private landowners can continue to own and manage their land, while determining what uses will be allowed into the future that will help protect your land’s conservation features. Being a good steward - practicing sustainable forest management, controlling invasive plants, or creating a land management plan for your property - can also help protect the Upper Namekagon.

Landmark Conservancy is a non-profit conservation organization serving 20 counties in western and northwestern Wisconsin. To date, we have worked to protect over 37,000 acres in Wisconsin. If you are interested in learning more, please contact us at erika@landmarkwi.org. We’d be happy to speak with you about your interests, meet you on your property, or provide additional information.

In the words of Aldo Leopold, “**Conservation can accomplish its objectives only when it springs from an impelling conviction on the part of private landowners.**” We hope you join us.

Sincerely,

Erika Lang
Conservation Manager

DRAFT



SPECIAL LAND

Deserves Special Consideration

Landmark Conservancy has worked with partners and landowners in northwest Wisconsin to protect 38,000 acres of land.

We invite you to work with us to protect the special natural resources on your property.

DRAFT

Check your mailbox in the coming weeks to learn more!

LANDMARKWI.ORG



LANDMARK
CONSERVANCY

Conserving Wisconsin's
natural legacy for everyone...forever.

LAND STEWARDSHIP FUNDS				
1/1/2012	Balance Forward (Stelljes, Leary, Willett Donations)	\$150.00		\$150.00
11/16/2012	CV Group Sierra Club	\$100.00		\$250.00
12/26/2012	Kevin Stelljes	\$150.00		\$400.00
2/5/13	B. Willett Donation (Finance)	\$100.00		\$500.00
5/21/13	T. Schraufnagel, L. Johnson Donations	\$240.00		\$740.00
5/21/13	Journal Entry/K. Jacobs Registration	\$50.00		\$790.00
5/24/13	Banquet Registration/Donations	\$10,060.00		\$10,850.00
5/29/13	D. Dukersheim/H. Grange Donations	\$220.00		\$11,070.00
6/2/13	Registrations/Donations/Silent Auction	\$1,420.00		\$12,490.00
6/10/13	Rod & Gun Club - Banquet Expenses		\$8,447.59	\$4,042.41
6/10/13	Donations/Silent Auction	\$335.00		\$4,377.41
6/12/13	Donation	\$20.00		\$4,397.41
6/27/13	Donation	\$20.00		\$4,417.41
6/24/13	River Edge Design (Brochures)		\$750.00	\$3,667.41
6/27/13	Badgerland Printing (Brochures)		\$688.00	\$2,979.41
7/22/13	Dunning/Kirkeeng Donations	\$120.00		\$3,099.41
8/7/13	Wells Fargo Advisors (Anon. Stock Donation)	\$10,349.26		\$13,448.67
8/13/13	Stelljes/Tews Brochure Donations	\$750.00		\$14,198.67
8/15/13	Wells Fargo Advisors	\$500.00		\$14,698.67
9/18/13	Valhalla Management Services		\$750.00	\$13,948.67
12/23/13	Hudson/Willett Donations	\$550.00		\$14,498.67
12/31/13	Journal Entry/Stelljes/Johnson/Marjala Donations	\$350.00		\$14,848.67
2/25/14	Schraufnagel, T. Donation	\$50.00		\$14,898.67
3/6/14	Michaels - Supplies		\$13.90	\$14,884.77
March	Earnest money - Coon Gut		\$2,500.00	\$12,384.77
	Earnest money - Pinter Pines		\$2,500.00	\$9,884.77
4/10/14	D. Carlson Donation (Stelljes Memorial)	\$50.00		\$9,934.77
5/26/14	H. & Marshall Grange (Carlson Memorial)	\$200.00		\$10,134.77
5/27/14	E. Wolf	\$100.00		\$10,234.77
5/27/14	J. Murray	\$100.00		\$10,334.77
5/28/14	G. Moore	\$1,000.00		\$11,334.77
5/31/14	Generous Juror	\$5,364.09		\$16,698.86
6/23/14	G. Adams	\$25.00		\$16,723.86
6/23/14	C. Bates	\$25.00		\$16,748.86
6/23/14	Eau Claire Rod & Gun Club	\$1,000.00		\$17,748.86
6/23/14	R. Leary	\$40.00		\$17,788.86
6/23/14	T. Wagener	\$25.00		\$17,813.86
6/26/14	Pat & Patricia Stoffers	\$14,845.56		\$32,659.42
7/1/14	J. Dunning	\$20.00		\$32,679.42
7/2/14	R. Hudson	\$50.00		\$32,729.42
7/17/14	Trouts Unlimited WI Clear Waters Chapter 255	\$300.00		\$33,029.42
7/21/14	Ziemann, Richard	\$100.00		\$33,129.42
7/16/14	K. Stelljes	\$1,049.25		\$34,178.67
7/30/14	Ziemann, Richard	\$100.00		\$34,278.67
8/11/14	Ziemann, Richard	\$200.00		\$34,478.67
8/26/14	Ziemann, Richard	\$200.00		\$34,678.67
9/5/14	Chippewa Valley Outdoor Resource Alliance	\$2,000.00		\$36,678.67
11/11/14	Supreme Graphics - Dedication Invitation		\$70.00	\$36,608.67
11/14/14	Dollar Tree - Dedication Supplies		\$6.00	\$36,602.67
11/14/14	Festival Foods - Dedication Supplies		\$133.16	\$36,469.51
11/24/14	Donations	\$11.00		\$36,480.51
	(2014 JE) Coon Gut/Pinter Pines Purchase		\$26,741.00	\$9,739.51
12/9/14	White, Steven	\$100.00		\$9,839.51
12/9/14	White, Steven	\$100.00		\$9,939.51
3/24/15	Viking Gas Transmission Co.	\$15,000.00		\$24,939.51
4/7/15	Schwengel, William	\$100.00		\$25,039.51
				\$25,039.51
7/30/15	Edson, Jane	\$150.00		\$25,189.51
12/7/15	J.C. Norby Assoc. (Stenske Property Appraisal Estimate)		\$1,250.00	\$23,939.51
1/21/16	Journal Entry/Stelljes, Kevin 2015 deposit	\$100.00		\$24,039.51
2/15/17	Kevin Stelljes-Donation	\$100.00		\$24,139.51
6/26/17	Laura Englesby-Donation	\$160.00		\$24,299.51
6/22/18	Western WI Title Services_Kiwani Land Purchase		\$3,750.00	\$20,549.51
9/12/18	Edson, Jane Donation	\$100.00		\$20,649.51
11/2/20	Marlene Jannusch-Donation	\$1,000.00		\$21,649.51
				\$21,649.51
				\$21,649.51
TOTAL:		\$69,249.16	\$47,599.65	\$21,649.51

Last Updated: Monday, November 30, 2020