

## AGENDA

Eau Claire County Board of Supervisors  
**Tuesday, May 19, 2020 at 7 pm**  
Virtual Meeting via Webex Events  
721 Oxford Ave. Eau Claire, WI

For those wishing to make public comment, you must fill out your information on the following link and click “done” **at least 30 minutes prior** to the start of the meeting. You will be called on during the public comment section to make your comment. Comments are limited to 3 minutes/person. Link: <https://www.surveymonkey.com/r/DZZZ9CP>. Written comments will also be accepted and should be submitted **at least 30 minutes prior** to the start of the meeting to [samantha.kraegenbrink@co.eau-claire.wi.us](mailto:samantha.kraegenbrink@co.eau-claire.wi.us).

### **Public Access:**

Dial In Number: 1-415-655-0001

Access Code: 926 295 952

*\*Please mute personal devices upon entry*

- (1) Indicates 1<sup>st</sup> Reading
- (2) Indicates 2<sup>nd</sup> Reading

1. Call to Order
2. Honoring of the Flag and Moment of Reflection by: Supervisor Steve Chilson
3. Call of the Roll
4. Approval of the Journal of Proceedings from May 5, 2020 **Pages 1-2**

### **APPOINTMENTS**

Confirming Chris Hambuch-Boyle to fill vacant County Board Supervisor District 16 seat. County Clerk, Janet Loomis, to administer Oath of Office; afterwards, Chris Hambuch-Boyle will be seated to begin duties as a County Board member

5. **PUBLIC COMMENT**

6. **REPORTS TO THE COUNTY BOARD UNDER 2.04.320**

### **Oral Reports**

- 1st Quarter Financial Report from Norb Kirk, Finance Director **Pages 3-11**
- General Updates from Kathryn Schauf, County Administrator
  - Task Force Update

## **Written Reports**

- Scholarship Awards from the Scholarship Committee **Pages 12-19**
- April 2020 Payments over \$10,000 from the Finance Department **Pages 20-22**
- 2020 Contingency Fund from the Finance Department **Page 22**
- Trended Personnel Costs from the Finance Department **Pages 23-26**

### **7. PRESENTATION OF PETITIONS, CLAIMS AND COMMUNICATIONS**

### **8. FIRST READING OF ORDINANCES BY COMMITTEES**

### **9. FIRST READING OF ORDINANCES AND RESOLUTIONS BY MEMBERS**

### **10. REPORTS OF STANDING COMMITTEES, COMMITTEES, COMMISSIONS AND BOARDS UNDER 2.04.160 AND SECOND READING OF ORDINANCES**

#### **Committee on Administration**

##### **File No.**

20-21/025 (1) Resolution – Recognizing, commending, and thanking Eau Claire County Board Supervisors upon their dedicated years of service **Pages 27-28**

#### **Committee on Planning & Development**

##### **File No.**

20-21/015 (2) Ordinance – Amending the 1982 official zoning district boundary map for the Town of Washington **Pages 29-40**

20-21/014 (2) Ordinance – Amending the 1982 official zoning district boundary map for the Town of Pleasant Valley **Pages 41-53**

#### **Committee on Finance and Budget**

##### **File No.**

20-21/009 (1) Resolution – Authorizing carryforward of funds from 2019 budget into 2020 budget **Pages 54-56**

### **11. APPOINTMENTS**

RE: Appointment of Members to Various Boards, Commissions and Councils **Page 57**

**Land Conservation Committee**

Ricky Strauch

Glory Adams

**Housing Authority**

Philip Swanhorst

**After County Board legislative session, County Board supervisors will begin a work session for the Strategic Plan.**

Prepared by: Samantha Kraegenbrink

Please note: Upon reasonable notice, efforts will be made to accommodate the needs of disabled individuals through sign language, interpreters or other auxiliary aids. For additional information or to request the service, contact the County ADA Coordinator at 839-4710 (FAX) 839-1669 or (TDD) 839-4735 or by writing to the ADA Coordinator, Human Resources Department, Eau Claire County Courthouse, 721 Oxford Ave., Eau Claire, Wisconsin 54703

**OFFICIAL PROCEEDINGS OF THE COUNTY BOARD  
OF SUPERVISORS**

**Tuesday, May 5, 2020**

The County Board of Supervisors of the County of Eau Claire convened remotely via Webex Events on Tuesday, May 5, 2020, and was called to order by Chair Nick Smiar at 7:00 p.m.

The Board honored the flag with the pledge of allegiance.  
Moment of reflection was presented by Supervisor Tami Schraufnagel.

Roll Call: 27 present: Supervisors Gary G. Gibson, Sandra McKinney, Joe Knight, Stella Pagonis, Dane Zook, Steve Chilson, Kevin Stelljes, Donald Mowry, Nancy Coffey, Ray L. Henning, Colleen Bates, Connie Russell, Judy Gatlin, Nick Smiar, Martha Nieman, James A. Dunning, Gerald Wilkie, Nathan Anderson, Mark Beckfield, Katherine Schneider, Robin Leary, Heather DeLuka, Melissa Janssen, Tami Schraufnagel, Zoe Roberts, Kimberly A. Cronk, Missy Christopherson  
1 absent: Supervisor Carl Anton  
1 vacancy: District 16

**JOURNAL OF PROCEEDINGS (April 21, 2020)**

On a motion by Supervisor Mowry, seconded by Supervisor Janssen, the Journal of Proceedings was approved via voice vote.

**ADJUSTMENTS TO AGENDA**

Chair Smiar removed from the addendum File No. 20-21/020 titled "RESOLUTION AWARDING THE SALE OF \$18,945,000 GENERAL OBLIGATION PROMISSORY NOTE, SERIES 2020A" to be acted on at a future meeting.

**PUBLIC COMMENT**

No one wished to speak.

**PRESENTATION OF PETITIONS, CLAIMS AND COMMUNICATIONS**

- A report regarding a rezoning request in the Town of Pleasant Valley was received from Ian and Rachael Mattson, owner; and Real Land Surveying/Peter Gartmann, applicant.
- A report regarding a rezoning request in the Town of Otter Creek was received from Wayne and Carla Kostka, owner.
- A report regarding a rezoning request in the Town of Washington was received from Daniel and Regina Mauer, owner; and Sean Bohan, applicant.
- A written proclamation "Proclaiming July 26<sup>th</sup> as Americans with Disabilities Act Awareness Day in Eau Claire County" was presented to the board. On a motion by Supervisor Schneider, seconded by Supervisor DeLuka, the proclamation was unanimously approved via roll call vote.

**REPORTS OF STANDING COMMITTEES, COMMITTEES, COMMISSIONS AND BOARDS UNDER  
2.04.160 AND SECOND READING OF ORDINANCES**

**Committee on Administration**

**Resolution 20-21/016 REQUESTING RESOLUTIONS TO BE CONSIDERED AT THE 2020 WCA ANNUAL BUSINESS MEETING**

On a motion by Supervisor Bates, seconded by Supervisor Wilkie, the resolution was unanimously adopted via roll call vote.

Committee on Administration and Committee on Human Resources

**Resolution 20-21/017** AUTHORIZING THE BRIDGE PLAN RELATED TO THE COVID-19 PANDEMIC; AND TO CREATE A TASK FORCE TO ADDRESS ISSUES RELATED TO THE COVID-19 CRISIS

On a motion by Supervisor Nieman, seconded by Supervisor Gatlin, the resolution was unanimously adopted via roll call vote.

Committee on Planning & Development

**Resolution 19-20/111** was listed in the agenda but the file number should be **Resolution 20-21/007** SUPPORTING A PROPOSED EAU CLAIRE-BLACK RIVER FALLS-TOMAH AMTRAK SHUTTLE CONNECTION

On a motion by Supervisor Gatlin, seconded by Supervisor Janssen, the resolution was unanimously adopted via roll call vote.

**Ordinance 19-20/114** AMENDING THE 1982 OFFICIAL ZONING DISTRICT BOUNDARY MAP FOR THE TOWN OF WASHINGTON

On a motion by Supervisor Janssen, seconded by Supervisor Coffey, the ordinance was unanimously enacted via roll call vote.

Committee on Parks & Forest

**Ordinance 20-21/012** TO AMEND SECTION 16.30.040 C. OF THE CODE: FEES AND CHARGES; TO AMEND SECTION 16.33.030 A. OF THE CODE: PAYMENT OF RENT AND DEPOSITS

Motion by Supervisor Gatlin, seconded by Supervisor Cronk, for enactment.

On a motion by Supervisor Schneider, seconded by Supervisor Nieman, Amendment No. 1 was presented as follows:

1. On Page 1, line 17, insert "County," before "State".
2. On line 31 insert "County," before "State".

The amendment was approved via voice vote.

Thereafter, the ordinance as amended once, was enacted via voice vote.

APPOINTMENTS

CONFIRMING CITIZEN APPOINTMENTS TO VARIOUS BOARDS, COMMISSIONS AND COUNCILS BY CHAIR NICK SMIR

On a motion by Supervisor Dunning, seconded by Supervisor Leary, the appointments were approved via voice vote.

The County Board had a moment of reflection honoring the passing of Ellery Jordahl, past County Board Supervisor.

The Board adjourned at 8:06 p.m.

Respectfully submitted,



Janet K. Loomis  
County Clerk

## Q1'2020 Finance Summary

- The county financials for the first quarter were not impacted by COVID-19 – I expect to see the impact starting in Q2
- Overall Q1 financial results for the general fund were slightly better than the first quarter of 2019
  - Q1'20 revenue was 15.6% of the budget compared to 12.8% in 2019 – timing of the Sales Tax payment between the two quarters accounts for the majority of the variance
  - Q1'20 expenditures were 21.0% of the budget compared to 22.3% of the budget in Q1'19
- Revenues historically and structurally are lower than expenditures, particularly in Q1
  - Sales Tax payments lag two months, but the January payment was the highest January amount recorded – I expect to see lower payments starting in June – latest high-side estimate is \$1.7M lower for 2020
  - Vehicle Registration fees collected amount to \$367K versus \$388K for 2019

## Q1'2020 Finance Summary

- Personnel expenditures compared to budget were comparable to 2019 activity for the first quarter
  - Total personnel expenditures amounted to \$10.2M, ~19% of the total county budget amount
  - Overall overtime expenditures compared to budget were down significantly from the 2019 winter impact, amounting to ~27% of the 2020 budget versus ~46% seen in Q1'19
- Supplies & Service expenditures were down significantly year-to-year - 6.6% versus 13.7% - primarily driven by lower Highway winter maintenance supplies
- All of the Economic Indicators in the first quarter were better than one year ago – with increases in interest/penalty collections, permits, and refinancing fees
- Driven by stronger collections and lower expenditures, the cash position at the end of Q1'20 was ~\$3M better than Q1'19



## Finance Department

Norb Kirk, CPA, CMA  
 Finance Director  
 721 Oxford Avenue, Eau Claire, WI 54703

Phone: 715.839.2827  
 E-Mail: [norb.kirk@co.eau-claire.wi.us](mailto:norb.kirk@co.eau-claire.wi.us)

To: Eau Claire County Board of Supervisors  
 Date: May 11, 2020  
 Re: March 2020 – 1st Quarter 2020 Financial Report

Overall, the fiscal performance for the first quarter of 2020 is consistent with expectations and historical averages. While reviewing the financial results, please remember that it is not unusual for expenditures to exceed revenue throughout the fiscal year, and in particular in the first quarter. This is attributed to the fact that some annual expenditures are recognized fully in the first quarter (such as community agency payments), and because most grants are reimbursement type grants, where the revenue is received after the expense is incurred.

There are a variety of ways to review and analyze the financial results for the first quarter. Presented below is additional information on components of both revenue and expenditure results from the first quarter with some context in which to review.

### Revenues

Revenues tend to be more cyclical in nature than expenses, and results for the first quarter are usually not always a good predictor for the fiscal year, particularly this year with the unknown impact of the COVID-19 pandemic. Intergovernmental grants and aids are likely to catch up at the end of the year when all reimbursements have been received. In addition, payments received from sales tax collections, given current month receipts lag the month of collection by two months, can skew the revenue results when reviewing any particular quarter.

From a county-wide overall perspective, 14.4% of the 2020 annual revenue budget has been recognized through March 31, 2020, as shown in the attached Q1 Department Budget to Actual report. Excluding bond proceeds, this ratio increases to 16.8%, as outlined in the table below. This is slightly lower on a comparable basis to the 18.2% recognized through March 31, 2019. Discounting the difference in timing of sales tax payments received in the first quarters of 2019 and 2020, the 2020 decrease is primarily related to reduced intergovernmental charges for highway services as a result of a milder winter season.

	2020 Budget	2020 Actual Q1	Percent of Budget
Tax Levy	\$ 35,765,561	\$ 8,941,389	25.00%
Sales Tax	10,850,960	919,229	8.47%
Other Taxes	6,002,098	622,024	10.36%
Intergovernmental Grants & Aids	28,583,270	2,801,538	9.80%
Intergovernmental Charges for Services	30,100,090	5,061,583	16.82%
Public Charges for Services	7,896,407	1,451,183	18.38%
Licenses & Permits	421,290	115,400	27.39%
Fines & Forfeitures	500,000	92,671	18.53%
Other Revenue	1,730,554	419,340	24.23%
<b>Total Revenues</b>	<b>\$121,850,230</b>	<b>\$20,424,357</b>	<b>16.76%</b>



**Property Taxes**

Property taxes are due on January 31 and are collected through that date. After January 31, all collections become the responsibility of Eau Claire County. By August 20, Eau Claire County must make full payment to all the other taxing jurisdictions without regard to what has been collected. Outstanding taxes as of March 31, 2020 are presented below. As noted in the table, the amount of uncollected taxes as of March 30, 2020 is approximately 12% lower than that from one year ago.

Levy Year	Collection Year	County Tax Rate	County Levy	County-Wide Levy	Uncollected Taxes as of 31-Mar-20	Percent of County-Wide Levy Collected
2018	2019	\$ 4.06	\$ 34,228,107	173,460,506	549,010	99.68%
2017	2018	\$ 4.09	\$ 32,444,886	172,992,808	300,042	99.83%
2016	2017	\$ 4.09	\$ 30,595,302	169,167,068	88,160	99.95%
2015	2016	\$ 4.02	\$ 29,015,350	159,300,022	11,138	99.99%
2014	2015	\$ 3.92	\$ 27,690,123	155,168,476	1,938	100.00%
2013	2014	\$ 3.88	\$ 26,178,192	151,529,795	409	100.00%
2012	2013	\$ 3.87	\$ 25,397,935	149,660,627	301	100.00%
2011	2012	\$ 3.71	\$ 24,493,206	148,648,642	268	100.00%
2010	2011	\$ 3.69	\$ 24,284,714	145,603,806	257	100.00%
2009	2010	\$ 3.63	\$ 23,500,160	140,446,458	246	100.00%
2008	2009	\$ 3.55	\$ 23,102,839	133,600,584	236	100.00%
<i>Uncollected Taxes as of March 31, 2020</i>					952,004	
<i>Uncollected Taxes as of March 31, 2019</i>					1,077,879	

**Sales Tax**

Sales tax collections for the first two months of 2020, as presented below, are slightly ahead of the 2019 collections for the same period and above the historical monthly averages, representing the highest amount collected historically for the first two months. That being said, Forward Analytics, a division of the Wisconsin Counties Association (WCA) projects that as a result of the COVID-19 pandemic and the Safer at Home order, counties could experience a decrease in sales tax collections for 2020 by 8%-12%. The projection was based on the original Safer at Home order issued March 25, 2020 set to expire on April 24, 2020. For Eau Claire County, the projected sales tax loss is estimated to be \$1.0M-\$1.4M. Eau Claire County expects to see the impact of this beginning with April collections, payable to the county in June 2020.

Month	2011	2012	2013	2014	2015	2016	2017	2018	2019	2020
January	\$ 649,869	\$ 613,413	\$ 637,758	\$ 633,370	\$ 655,343	\$ 696,710	\$ 755,910	\$ 746,338	\$ 704,798	\$ 919,229
February	602,909	563,535	532,904	689,925	843,563	882,113	628,528	601,096	669,281	801,924
March	561,038	783,032	834,428	852,142	864,937	659,845	914,348	957,986	959,733	
April	797,429	741,448	606,312	641,812	719,623	933,154	883,529	900,497	854,152	
May	567,787	549,895	783,189	856,800	854,993	880,459	803,003	946,279	1,020,614	
June	707,990	872,811	924,281	935,972	835,827	819,172	893,219	1,249,533	1,134,311	
July	751,169	783,644	655,631	764,686	1,031,180	946,348	1,108,995	748,195	763,404	
August	616,376	785,490	823,653	1,004,488	957,996	817,003	829,756	987,184	1,128,758	
September	804,241	788,958	805,689	725,272	753,988	906,726	984,452	1,086,193	1,059,516	
October	705,976	669,856	655,379	830,917	968,167	901,132	933,541	789,472	775,608	
November	630,916	799,401	872,360	934,158	868,976	662,535	652,721	950,828	1,071,365	
December	844,605	817,298	774,289	707,471	708,777	996,080	1,137,837	1,069,954	968,152	
Total	\$ 8,240,305	\$ 8,768,781	\$ 8,905,873	\$ 9,577,013	\$ 10,063,370	\$ 10,101,277	\$ 10,525,839	\$ 11,033,555	\$ 11,109,693	\$ 1,721,153
Budgeted	\$ 7,675,000	\$ 7,800,000	\$ 8,060,000	\$ 8,586,000	\$ 8,950,000	\$ 9,280,000	\$ 9,600,000	\$ 10,100,000	\$ 10,849,216	\$ 10,850,960
Excess (Short)	\$ 565,305	\$ 968,781	\$ 845,873	\$ 991,013	\$ 1,113,370	\$ 821,277	\$ 925,839	\$ 933,555	\$ 260,477	\$ (9,129,807)
	2011 Surplus	2012 Surplus	2013 Surplus	2014 Surplus	2015 Surplus	2016 Surplus	2017 Surplus	2018 Surplus	2019 Surplus	

**Vehicle Registration Fee (VRF)**

Beginning with 2019, the County started collecting a vehicle registration fee to be used to fund county highway and bridge construction. This fee is collected by the State as part of the annual vehicle registration renewal process. The chart below outlines the activity for the first quarter of 2020 and all of 2019. Eau Claire County is slightly behind collections from a year ago, however, this could be the result of inconsistent deposit timing with the startup of the program in 2019. At this point I would not anticipate any shortfall in collections for 2020.

Month	2019		2020	
January	\$	217,841	\$	179,440
February		170,323		187,426
March		225,742		229,001
April		238,091		
May		221,855		
June		219,188		
July		246,307		
August		214,965		
September		199,255		
October		190,967		
November		145,564		
December		161,945		
Total	\$	2,452,040	\$	595,867
<b>Budget</b>	\$	2,300,000	\$	2,300,000
YTD Excess (Short)	\$	152,040	\$	(1,704,133)

**Economic Indicators**

The state of the economy is an important leading indicator of potential impact to Eau Claire County, which is monitored through key metrics which include: property tax collections, key planning and zoning permits, register of deeds collections, and interest earned on invested funds. The key metrics being monitored are summarized in the table below. Based solely on the first quarter 2020 activity, all of the economic indicators are above that from the comparable period in 2019. During the first quarter the county has seen an increase in interest and penalty collections, permit activity and fees related to an increase in mortgage refinancing. It is likely that the county will see variable activity in these metrics due to the impacts of the COVID-19 pandemic as we continue through 2020.

Economic Indicator Line Items	2017 Total	2018 Total	2019 Total	2020 Annual	Actual through	2020
				Budget	03/31/20	% of Budget
Interest Collected on Delinquent Taxes	379,713	328,150	338,310	300,000	74,433	24.81%
Penalties Collected on Delinquent Taxes	186,973	168,129	170,271	150,000	37,750	25.17%
Zoning and Permits	301,573	366,915	383,408	320,000	81,135	25.35%
Real Estate Transfer Tax	312,030	303,241	325,795	300,000	81,859	27.29%
Register of Deeds Filing Fees	395,908	306,455	408,162	320,000	76,603	23.94%
Interest Earned on Investments	203,451	435,089	618,948	275,000	101,828	37.03%

**Expenditures**

**Expenditures by Program**

A summary of the expenditures by program, excluding debt service, capital outlay, and internal service fund activity, is shown below and provides a functional perspective of the expenditures in relationship to the adjusted budget. All county departments fall into one or more of the program areas listed below. Analysis of the program expenditures may provide some insight into the demands of the community and the resulting expenditures incurred.

Expenditures through the first quarter of 2020 amounted to \$18.9 million (17.4%) of the budget which is approximately 4.4% lower than the relative percentage through the first quarter of 2019. This is due, in large part, to decreased costs in the transportation program area resulting from reduced winter maintenance needs. All other program areas were relatively consistent with the first quarter of 2019.

	<b>2020 Budget</b>	<b>2020 Actual Q1</b>	<b>Percent of Budget</b>
General Government	\$ 13,294,088	\$ 2,314,091	17.41%
Public Safety	17,967,131	3,839,021	21.37%
Health & Social Services	46,565,187	8,223,794	17.66%
Transportation & Public Works	26,079,489	3,319,569	12.73%
Culture & Education	2,462,058	646,614	26.26%
Conservation & Economic Development	2,311,997	521,442	22.55%
<b>Total Expenditures</b>	<b>\$ 108,679,950</b>	<b>\$ 18,864,531</b>	<b>17.36%</b>

**Expenditures by Category**

Expenditures by category are represented below and provide a greater understanding of the source of the expenditure. The largest expenditure category for the county is and will continue to be personnel costs. For the first quarter, personnel expenditures were lower than 25% of the budget primarily driven by the amount of vacant FTE positions. At the end of March 2020, vacant positions amounted to 28 FTE compared to 34 FTE at the end of March 2019. Personnel costs impact all programs across the county and are a main factor in overall program expenditure variances to budget. For additional information on personnel costs please see the attached Trended Personnel Report.

<b>Expenditures</b>	<b>Budget</b>	<b>Actual</b>	<b>Variance u/(o)</b>	<b>% of Budget</b>
Personnel	\$ 52,261,782	\$ 10,170,128	\$ 42,091,654	19.46%
Contracted Services	25,388,550	5,848,327	19,540,223	23.04%
Supplies & Services	19,449,487	1,276,752	18,172,735	6.56%
Fixed Charges	5,567,590	1,577,050	3,990,540	28.33%
Internal Service Funds, Other	12,136,433	3,023,716	9,112,717	24.91%
Debt Service	11,857,677	1,013,663	10,844,014	8.55%
Capital Outlay & Equipment	6,928,696	134,674	6,794,022	1.94%
Other (Contingency and IM Consortia)	7,933,152	(0)	7,933,152	0.00%
<b>Total</b>	<b>\$ 141,523,367</b>	<b>\$ 23,044,310</b>	<b>\$ 118,479,057</b>	<b>44.20%</b>

Supplies & Services expenditures are typically more linear and through March 31, 2020 are running slightly lower than expected, primarily as a result of the mild winter and reduced material needs for winter maintenance requirements. Other general administrative supplies, such as office supplies and postage, are running under the budgeted amounts across most departments in the county.

Fixed charges include property, liability, and worker's compensation insurance charges and Highway machinery rental. This category is running as expected for the first quarter.

Internal Service funds provide services to other departments. The County has three internal service funds: Risk Management, Health Insurance, and Shared Services. Departments budget for their share of these expenditures as part of their annual budget. The internal service fund subsequently pays the expenditures and will report either a deficit or a surplus, depending on the actual charges incurred versus the allocations to the departments, which are based on budget.

Annual debt service is paid in two installments. The first installment of interest on issued debt is due March 1, and the second installment of interest and all principle is due September 1.

Capital outlay does not follow a linear pattern and there can be significant variability by quarter and from year to year. The first quarter of 2020 is off to a slow start for capital projects compared to 2019. At this point in the year, Eau Claire County has no reason not to expect the full budgeted capital outlay to occur. Given that most capital is funded by borrowing, the timing of financing relative to any cash flow impacts resulting from the COVID-19 pandemic may impact the capital outlay for 2020 and will be monitored closely. The county will be aggressively pursuing financing on a timeline earlier than has been done historically to mitigate market fluctuations and cash flow pressures.

### **In Conclusion**

The overall results for the first quarter of 2020 are in-line with expectations and in some areas ahead of the comparable quarter in 2019. The impact of the COVID-19 pandemic did not impact the financial results for the first quarter, so it is important to view the first quarter results with that in mind.

As a result of the COVID-19 pandemic and the Safer at Home order, the county is anticipating a decrease in revenue, primarily in the areas of sales tax, fines/fees, and charges for services starting in the second quarter and likely through the remainder of 2020. In addition, Eau Claire County expects some corresponding reductions in expenditures that are directly correlated with revenue activity that has been reduced, mitigating some of the net impact to the county. It remains to be seen, however, how the COVID-19 pandemic will impact the community overall, and how those changes in needs will impact program areas within the county. The Finance department will continue to monitor the fiscal situation and work with departments on projecting financial results for 2020 based on existing activity and trends in an effort to provide as up to date fiscal assessments as possible to the board.

Department financial reports for the quarter ended March 31, 2020 are available on the County website under "Report Central" via the URL: <https://www.co.eau-claire.wi.us/government/financial-information>.

I encourage you to contact me with any questions you may have.

Norbert Kirk, CPA, CMA  
Finance Director

EAU CLAIRE COUNTY FINANCIAL REPORT (Unaudited)  
 March 31, 2020 - at 04/21/20  
 Percent of Year Complete: 25%

Department	2020 YTD Actual Surplus/(Deficit)	2019 YTD Actual Surplus/(Deficit)	2020 Budget Expenses	2020 Actual Expenses	% of Budget	2019 % of Budget	2020 Budget Revenues	2020 Actual Revenues	% of Budget	2019 % of Budget
<b>GENERAL FUND</b>										
Administration	9,217	(18,834)	273,705	59,259	21.65%	30.19%	273,705	68,476	25.02%	24.98%
Child Support (includes Corp Counsel for 2019)	(250,361)	(218,896)	1,299,189	251,930	19.39%	20.65%	1,299,189	1,569	0.12%	9.51%
CJCC	55,053	33,633	1,086,756	184,164	16.95%	20.00%	1,086,756	239,217	22.01%	23.38%
Corporation Counsel	43,646	-	690,888	126,043	18.24%	N/A	690,888	169,689	24.56%	N/A
County Board	13,152	14,678	218,032	41,356	18.97%	14.63%	218,032	54,508	25.00%	25.00%
County Clerk	13,162	22,182	335,304	61,531	18.35%	19.74%	335,304	74,693	22.28%	27.39%
Circuit Court (includes Clerk of Courts for 2019)	89,494	125,410	1,090,490	191,972	17.60%	21.30%	1,090,490	281,466	25.81%	26.49%
Clerk of Courts	28,881	-	1,496,470	280,689	18.76%	N/A	1,496,470	309,571	20.69%	N/A
District Attorney	(7,771)	(55,798)	1,238,580	205,655	16.60%	21.62%	1,238,580	197,883	15.98%	16.75%
Extension	41,175	45,469	309,775	30,807	9.94%	10.14%	309,775	71,982	23.24%	25.13%
Facilities	174,863	141,197	2,317,083	405,959	17.52%	19.35%	2,317,083	580,822	25.07%	25.34%
Finance	22,513	54,163	832,234	179,974	21.63%	19.19%	832,234	202,487	24.33%	25.75%
Human Resources	54,466	26,564	600,747	95,721	15.93%	21.26%	600,747	150,187	25.00%	25.00%
Information Services	182,497	163,898	2,071,328	325,819	15.73%	16.48%	2,071,328	508,316	24.54%	23.78%
Nondepartmental*	(2,991,819)	(3,973,372)	5,406,145	1,770,772	32.75%	33.93%	5,406,145	(1,221,047)	-22.59%	-41.84%
Parks and Forest	50,127	(11,662)	1,560,648	195,926	12.55%	15.68%	1,560,648	246,054	15.77%	14.92%
Planning and Development	(26,782)	(88,769)	1,726,318	367,780	21.30%	23.14%	1,726,318	340,997	19.75%	17.69%
Register in Probate	10,547	9,730	277,827	55,100	19.83%	20.24%	277,827	65,647	23.63%	23.84%
Register of Deeds	30,107	(36,876)	352,594	64,233	18.22%	17.96%	352,594	94,340	26.76%	6.86%
Sheriff (includes Fund 212 for 2018)	394,329	335,005	13,434,925	2,811,473	20.93%	21.23%	13,434,925	3,205,802	23.86%	23.81%
Treasurer	30,229	(24,850)	321,295	64,011	19.92%	18.38%	321,295	94,240	29.33%	10.65%
Veterans Office	28,836	29,484	266,346	52,574	19.74%	16.53%	266,346	81,410	30.57%	27.30%
<b>TOTAL GENERAL FUND</b>	<b>(2,004,440)</b>	<b>(3,427,644)</b>	<b>37,206,679</b>	<b>7,822,750</b>	<b>21.03%</b>	<b>22.26%</b>	<b>37,206,679</b>	<b>5,818,309</b>	<b>15.64%</b>	<b>12.83%</b>

\*Nondepartmental expenditures include, but are not limited to, the following: Community Agencies, Medical Examiner, Communciation Center, Health Department, Library, Beaver Creek, general fund transfers  
 \*Nondepartmental revenues include county sales tax, forest crop taxes, other shared taxes, allocated property taxes, Medical Examiner fees, and other general government grants

EAU CLAIRE COUNTY FINANCIAL REPORT (Unaudited)  
 March 31, 2020 - at 04/21/20  
 Percent of Year Complete: 25%

Department	2020 YTD Actual Surplus/(Deficit)	2019 YTD Actual Surplus/(Deficit)	2020 Budget Expenses	2020 Actual Expenses	% of Budget	2019 % of Budget	2020 Budget Revenues	2020 Actual Revenues	% of Budget	2019 % of Budget
<b>HEALTH AND HUMAN SERVICES FUNDS</b>										
Human Services Fund	(3,293,236)	(2,762,479)	32,870,800	7,114,018	21.64%	22.41%	32,870,800	3,820,782	11.62%	13.89%
DHS Pass Thru Grant Fund*	-	-	8,770,520	-	0.00%	N/A	8,770,520	-	0.00%	N/A
<b>TOTAL HEALTH AND HUMAN SERVICES FUNDS</b>	<b>(3,293,236)</b>	<b>(2,762,479)</b>	<b>41,641,320</b>	<b>7,114,018</b>	<b>17.08%</b>	<b>N/A</b>	<b>41,641,320</b>	<b>3,820,782</b>	<b>9.18%</b>	<b>N/A</b>
<b>DEBT SERVICE FUND</b>	<b>1,195,419</b>	<b>3,125,108</b>	<b>11,710,779</b>	<b>999,154</b>	<b>8.53%</b>	<b>-5.44%</b>	<b>11,710,779</b>	<b>2,194,573</b>	<b>18.74%</b>	<b>24.57%</b>
<b>CAPITAL PROJECTS FUND</b>	<b>413,270</b>	<b>(402,490)</b>	<b>9,480,208</b>	<b>298,635</b>	<b>3.15%</b>	<b>8.66%</b>	<b>9,480,208</b>	<b>711,905</b>	<b>7.51%</b>	<b>1.18%</b>
<b>ENTERPRISE FUNDS</b>										
Airport	469,139	75,006	2,007,626	(12,126)	-0.60%	23.51%	2,007,626	457,013	22.76%	28.65%
Highway	1,192,592	832,677	22,820,502	3,125,872	13.70%	20.90%	22,820,502	4,318,464	18.92%	24.88%
<b>TOTAL ENTERPRISE FUNDS</b>	<b>1,661,732</b>	<b>907,683</b>	<b>24,828,128</b>	<b>3,113,746</b>	<b>12.54%</b>	<b>21.07%</b>	<b>24,828,128</b>	<b>4,775,478</b>	<b>19.23%</b>	<b>25.13%</b>
<b>SPECIAL REVENUE FUNDS</b>										
Land Records Retained Fees	28,120	20,760	100,000	-	0.00%	0.00%	100,000	28,120	28.12%	20.76%
Watershed	14,327	10,790	330,291	4,293	1.30%	0.01%	330,291	18,620	5.64%	3.35%
Recycling	62,605	81,954	1,398,259	220,332	15.76%	15.98%	1,398,259	282,937	20.23%	22.01%
West Central Drug Task Force (Forfeiture Funds)	(35,320)	123,650	93,130	35,320	37.93%	14.69%	93,130	-	0.00%	147.46%
Aging and Disability Resource Center	(162,339)	(199,669)	3,229,041	568,581	17.61%	17.84%	3,229,041	406,242	12.58%	11.60%
<b>TOTAL SPECIAL REVENUE FUNDS</b>	<b>(92,608)</b>	<b>37,485</b>	<b>5,150,721</b>	<b>828,526</b>	<b>16.09%</b>	<b>15.80%</b>	<b>5,150,721</b>	<b>735,918</b>	<b>14.29%</b>	<b>16.54%</b>
<b>SUBTOTAL BEFORE INTERNAL SERVICE FUNDS</b>	<b>(2,119,863)</b>	<b>(2,522,337)</b>	<b>130,017,835</b>	<b>20,176,829</b>	<b>15.52%</b>	<b>N/A</b>	<b>130,017,835</b>	<b>18,056,966</b>	<b>13.89%</b>	<b>N/A</b>
<b>INTERNAL SERVICE FUNDS</b>										
Risk Management	(123,227)	(105,156)	1,689,780	427,635	25.31%	22.92%	1,689,780	304,408	18.01%	17.20%
Health Insurance	(325,165)	244,505	9,383,984	2,334,863	24.88%	N/A	9,383,984	2,009,698	21.42%	N/A
Shared Services	(51,697)	-	431,768	104,983	24.31%	N/A	431,768	53,286	12.34%	N/A
<b>TOTAL INTERNAL SERVICE FUNDS</b>	<b>(500,089)</b>	<b>139,349</b>	<b>11,505,532</b>	<b>2,867,481</b>	<b>24.92%</b>	<b>N/A</b>	<b>11,505,532</b>	<b>2,367,392</b>	<b>20.58%</b>	<b>N/A</b>
<b>TOTAL COUNTY</b>	<b>(2,619,952)</b>	<b>(2,382,988)</b>	<b>141,523,367</b>	<b>23,044,310</b>	<b>16.28%</b>	<b>20.29%</b>	<b>141,523,367</b>	<b>20,424,357</b>	<b>14.43%</b>	<b>18.19%</b>

Original Adopted Budget

141,523,367

\*The DHS Pass Thru Grant Fund holds activity related to Great Rivers IM Consortia pass thru grants and for the WI Basic County Allocation (BCA Payback) grant. These grants are not part of DHS's operations budget because the department is the intermediary between the state and the ultimate recipient.

## 2020-2021 Employee Scholarship Fund Recipients

We are pleased to award \$600 scholarships to ten (10) recipients for the 2020-2021 academic year. Including this year's recipients, the Eau Claire County Employee Scholarship Fund has awarded \$167,100 to 275 recipients over the past 29 years!



### **Brooklynn Arbs, daughter of Rebecca Arbs- DHS**

In 2022, I plan on graduating from the University of Wisconsin – La Crosse's College of Science and Health with a major in Biology: Biomedical Sciences with a Pre-Medicine Concentration and a double minor in chemistry and mathematics. During my time at UWL, I have been volunteering with the La Crosse County Special Olympics and this past January I went on a medical mission trip to Guatemala. I have also been a part of the Eta Phi Alpha Honors Society, the Biology Club and the Pre-med Club, where I will be the treasurer next school year. After getting my bachelor's degree, I plan on going to medical school, concentrating in orthopedics or pediatrics.



### **Elizabethe Bowe, daughter of Tim Bowe- Highway Department**

My name is Elizabethe Bowe. I attended the Chippewa Falls School District for 12 years and am currently a freshman at UW River Falls and LOVE it! I am majoring in Communication and Speech Disorders. I hope to continue on to get my Masters Degree and become a Speech Therapist at an Elementary school in the Chippewa Valley. I am hoping to study abroad my Junior year in Scotland. In my free time I love to kayak, hammock, go boating and four-wheeling and travel. I am involved in the Optimist Program on the River Falls campus and am on an intra-mural badminton team for fun. Thank you so much for awarding me this scholarship!





### **Harper Dilley, daughter of Julie Dilley- Community Services**

I am about to graduate from North High School as one of the class Valedictorians. I have participated in Basketball and was awarded the MVP defensive player this past year, I have ran track every year and went to State my sophomore year. I also ran cross country and was awarded the Top Dog award my freshman year. I've also been on an Odyssey of the Mind team since middle school and we've gone to World Finals twice. An ACL injury my junior year during our first basketball game of the season side-lined my junior year for basketball, though I still attended many practices and games, and of course ended my track career, which is now side-lined due to these times we are living in. Currently, I am finishing out the school year on-line and working almost full-time at Festival Foods. I am attending UW Madison this fall, with plans to major in Political Science and then go on to law school. I thank you for the scholarship and hope all of you stay well during this unprecedented time in our lives.



### **Emma Eslinger, daughter of Rod Eslinger- Planning and Development**

My name is Emma Eslinger and in the fall I plan on attending the University of Wisconsin- La Crosse. I am currently undecided, but plan on pursuing something that I am passionate about. I have always loved helping others and strive to leave a positive impact on the world.

Throughout my education, I have always been a leader and very driven academically. I attended Chippewa Falls Senior High School and was very involved with athletics and academic activities. I was a member of National Honors Society, National English Honors Society, Athena, and the Senior Leadership Team. I was also on the Honor Roll all 4 years, an Attendee of American Legion Badger Girls State, in the top 10% of my class, and I've been a member of the Chippewa County Youth Court for the past 4 years. I have also been awarded the Optimist Club Student of the Month and the Kiwanis Golden Rule Student of the Month this school year.

As an athlete, I participated in the women's swim team, track and field, and cross country. I have earned 6 varsity letters (3 in track, 2 in swim team, and 1 in cross country). I was also a recipient of the Cardinal Award for my distinguishable leadership and character.

Thank you again for this generous scholarship. I am very appreciative that I was selected as a recipient!



**Mitchell Lyons, son of Glenda Lyons- County Treasurer**

I am attending the University of Wisconsin La Crosse for Mathematics Education. My goal with this degree is not only to teach math but also to teach a in depth way of learning. Some achievements that I received in High school are High Honors all four years, fifth place in a math competition, and a sectional track runner. Thank you for supporting the furthering of my education.



**Samantha Lyons, daughter of Glenda Lyons- County Treasurer**

Throughout my High School career I was a very active member, being involved in National Honors Society, Student Council, FFA, Track and Field, Cross Country and Band. I always achieved High Honor Roll resulting in my 3.98 GPA. In fall of 2020 I will be attending University of Wisconsin LaCrosse where I will pursue an education in becoming a Radiation Therapist.



### **Grace Mayer, daughter of Thomas Mayer- Parks and Forrest**

My name is Grace Mayer. I am currently a second semester freshman at the University of Wisconsin Eau Claire. I recently declared a major in elementary education. I was fortunate to earn a 3.5 GPA my first semester.

I graduated from Augusta High School in the spring of 2019 with a GPA of 3.72. While attending high school, I was an honors student, freshman through senior year, and as a member of the National Honors Society participated in tutoring a middle school student, Salvation Army bell ringer, and promoted and assisted at American Red Cross blood drives. I enjoyed participating in pep band, jazz band, and solo ensemble. I received various music awards including the John Phillip Sousa Band Award. I also was a member of FCCLA (Family, Career, and Community Leaders of America), SADD (Students Against Destructive Decisions), and the Augusta High School Archery club.

While attending UWEC I enjoy attending weekday Mass at the Ecumenical center and continue to be an active member at St. Raymond's Catholic church.

I want to thank Eau Claire County, the Employee Scholarship Fund Committee, all Eau Claire County Employees and elected officials for awarding me one of the 2020-2021 scholarships. This generous award will help me further my education and obtain my degree.



**Anna Nyman, daughter of Michelle Nyman- DHS**

I just finished my sophomore year at the University of Minnesota Duluth. I am a Political Science major with an Environment and Sustainability minor. I hope to one day attend law school after I finish my undergraduate degree. Thank you for the Eau Claire County Employee Scholarship!



**Laura Sokup, daughter of Mike Sokup- DHS**

My name is Laura Sokup. I am currently a Freshman at the University of Wisconsin- Eau Claire, majoring in Social Work. One big achievement I had this school year was going on my first international mission trip. I got to spend a week at an orphanage in Peru, which was a very rewarding and eye-opening experience for me. It reaffirmed my desire for wanting to help those in need. Although I had a great time helping the children in Peru, I look forward to the ways in which I can help people within my own community as well.



### **Sophia Ziehr, daughter of Lissa Ziehr- DHS**

Thank you very much for the scholarship! This extra funding is very helpful. A bit about me, since applying for the scholarship I have officially declared my major. I will be double majoring in Environmental Studies and International Studies with a focus on policy and politics. I will have completed my German minor by the end of first semester next year. I plan to work toward a minor in sustainability as well. I am a Power's Knapp Scholar at UW Madison. PK is a merit-based organization that focuses on giving back to the community. I have been able to participate in many volunteer opportunities through this group. I also love attending Badger football games.

**TO:** Honorable Eau Claire County Board of Supervisors  
**FROM:** Finance Department  
**DATE:** May 8, 2020  
**SUBJECT:** April 2020 Payments over \$10,000

Pursuant to Section 4.06.060 of the County Code of General Ordinances, the following are the details for expenditures and payments of \$10,000 or more issued during April 2020.

Vendor	DESCRIPTION	Amount
DEPARTMENT OF EMPLOYEE TRUST FUNDS	March 2020 WRS Contributions	\$ 344,644.68
CITY OF EAU CLAIRE TREASURER	April Comm Center; Q1 Purchasing Manager	164,781.74
CITY OF ALTOONA CLERK TREASURER	Lottery Settlement	153,695.24
SCHOOL DISTRICT OF ALTOONA	Lottery Settlement - City of Altoona	141,351.17
FALL CREEK SCHOOL DISTRICT	Lottery Settlement - T. of Ludington	126,714.03
AUGUSTA SCHOOL DISTRICT	Lottery Settlement - T. of Lincoln	117,330.27
EAU CLAIRE CITY COUNTY HEALTH DEPARTMENT	Apr-2020 monthly payment	103,600.00
CORRECT CARE SOLUTIONS LLC	Contracted Services	60,186.61
LUTHERAN SOCIAL SERVICES INC	March CTC Contract	52,000.00
OSSEO FAIRCHILD SCHOOL DISTRICT	Lottery Settlement - V. of Fairchild	45,919.56
FRIENDS OF BEAVER CREEK RESERVE	2020 Comm Agency Funding - Q2 payment	45,000.00
ARAMARK SERVICES INC	Inmate Meals 2/20-3/25-20	40,049.86
XCEL ENERGY	Courthouse & Jail Electric	38,732.92
TOWN OF WASHINGTON TREASURER	Lottery Settlement	37,654.63
SCHOOL DISTRICT OF MONDOVI	Lottery Settlement - T. of Brunswick	36,953.92
TRY INC	2020 Comm Agency Funding - Q2 payment	33,404.75
DELTA DENTAL PLAN OF WISCONSIN INC	Delta Vision Apr-2020	29,516.90
CITY OF AUGUSTA CLERK TREASURER	Lottery Settlement	27,765.61
NATIONWIDE RETIREMENT SOLUTIONS INC	457(b) EE contributions - 04/24/20 PR	25,493.65
NATIONWIDE RETIREMENT SOLUTIONS INC	457(b) EE contributions - 04/10/20 PR	25,318.65
VILLAGE OF FALL CREEK TREASURER	Lottery Settlement	24,930.97
SCHOOL DISTRICT OF ELEVA STRUM	Lottery Settlement - T. of Clear Creek	24,294.84
TOWN OF PLEASANT VALLEY TREASURER	Lottery Settlement	20,998.17
TOWN OF SEYMOUR TREASURER	Lottery Settlement	18,383.31
JP GRAPHICS INC	Ballots for April Spring 2020 Election	15,276.11
SECURIAN FINANCIAL GROUP INC	EE Life Ins Premiums - May-2020	11,808.87
J & F FACILITY SERVICES INC	Monthly Janitorial Service	11,318.00
BARTINGALE MECHANICAL INC	Service Call	11,143.26
TOWN OF LINCOLN TREASURER	Lottery Settlement	11,079.41
OPENGOV INC	Operational Performance 2020	10,318.06
	<b>TOTAL FUND: General</b>	<b>\$ 1,809,665.19</b>
TREMPEALEAU COUNTY	Contracted Services	\$ 69,014.59
LUTHERAN SOCIAL SERVICES INC	Contracted Services	56,326.91
CHILED A INSTITUTE INC	Contracted Services	53,468.49
NORTHWEST COUNSEL & GUIDANCE CLINIC INC	Contracted Services	53,331.20
LUTHERAN SOCIAL SERVICES	Contracted Services	43,863.00
CAILLIER CLINIC INC	Contracted Services	38,005.53
BROTOLOC INC	Contracted Services	37,332.75
POSITIVE ALTERNATIVES INC	Contracted Services	33,980.95
LUTHERAN SOCIAL SERVICES	Contracted Services	32,886.42
MAYO CLINIC	Contracted Services	28,372.00
NORTHWEST PASSAGE LTD	Contracted Services	26,361.50
LUTHERAN SOCIAL SERVICES	Contracted Services	25,476.57
MAYO CLINIC	Contracted Services	24,756.30
BROTOLOC INC	Contracted Services	21,909.44
LUTHERAN SOCIAL SERVICES	Contracted Services	19,627.52
TRINITY EQUESTRIAN CENTER	Contracted Services	18,896.46
GERARD ACADEMY	Contracted Services	15,712.70
COOPERATIVE EDUCATIONAL SERVICE AGENCY	Contracted Services	15,186.96

Vendor	DESCRIPTION	Amount
HABILITATION CENTER	Contracted Services	14,725.00
CAILLIER CLINIC INC	Contracted Services	14,660.00
CAILLIER CLINIC INC	Contracted Services	13,114.55
WESTERN DAIRYLAND ECONOMIC OPPORT. INC	Energy Assistance - March	12,467.99
KIMBERLY SCHMIDT, PMHNP-BC, LTD	Contracted Services	11,887.50
LAD LAKE INC	Contracted Services	11,853.78
CORRECT CARE SOLUTIONS LLC	Contracted Services	10,984.05
LUTHERAN SOCIAL SERVICES	Contracted Services	10,613.83
PREVEA WESTERN	Contracted Services	10,188.92
	<b>TOTAL FUND: Human Services</b>	<b>\$ 725,004.91</b>
COUNTY OF POLK DEPT OF HUMAN SERVICES	IM Consortia Payment	\$ 108,584.00
COUNTY OF BARRON	IM Consortia Payment	103,682.00
COUNTY OF PIERCE	IM Consortia Payment	62,009.00
COUNTY OF ST CROIX	IM Consortia Payment	56,758.00
WASHBURN COUNTY	IM Consortia Payment	20,183.00
	<b>TOTAL FUND: DHS Passthrough Grants</b>	<b>\$ 351,216.00</b>
SYNERGY COOPERATIVE	No Till Drill	35,975.00
	<b>TOTAL FUND: Watershed</b>	<b>\$ 35,975.00</b>
BOXX SANITATION LLC	Curbside Service March	42,462.54
	<b>TOTAL FUND: Recycling</b>	<b>\$ 42,462.54</b>
CITY OF EAU CLAIRE TREASURER	Jan/Feb 2020 Paratransit Services	28,002.97
	<b>TOTAL FUND: ADRC</b>	<b>\$ 28,002.97</b>
MENOMONIE FLOORING CENTRE	Courthouse Flooring	16,364.30
	<b>TOTAL FUND: Capital Projects</b>	<b>\$ 16,364.30</b>
COUNTY OF OUTAGAMIE	1999 Oshkosh Multi-Function Equipment	\$ 25,000.00
CITY OF EAU CLAIRE TREASURER	Q1 water/sewer - terminal	13,206.82
XCEL ENERGY	March Airport Electric	11,612.29
	<b>TOTAL FUND: Airport</b>	<b>\$ 49,819.11</b>
US BANCORP GOVERNMENT LEASING & FINANCE	Equipment Lease	\$ 53,278.42
AYRES ASSOCIATES	CTH V	23,818.50
RIGHT OF WAY SPECIALISTS INC	right of way	14,020.00
HIGHWAY CONSTRUCTION PRODUCTS LLC	post	11,205.43
COUNTRYSIDE COOPERATIVE	Diesel	10,325.55
	<b>TOTAL FUND: Highway</b>	<b>\$ 112,647.90</b>
WISCONSIN MUNICIPAL MUTUAL INS COMPANY	Claim WCLTEC2017086716	\$ 117,500.00
WISCONSIN MUNICIPAL MUTUAL INS COMPANY	Worker's Comp	13,905.92
	<b>TOTAL FUND: Risk Management</b>	<b>\$ 131,405.92</b>
DIFFERENCE CARD	Apr-2020 Diff Card Fees	21,562.20
	<b>TOTAL FUND: Health Insurance</b>	<b>\$ 21,562.20</b>
<b>Payments Affecting Multiple Funds</b>		
WEA INSURANCE CORPORATION	EE Health Ins Prem May-2020	\$ 535,582.98
AVIDIA BANK	HSA EE contributions - 04/10/20 PR	184,011.57
U.S. Bank Corporate Payment Systems	Pcard Charges: April 2020	58,989.10
AVIDIA BANK	HSA EE contributions - 04/24/20 PR	23,696.57
	<b>TOTAL MULTIPLE FUNDS</b>	<b>\$ 802,280.22</b>
	<b>GRAND TOTAL OF ALL FUNDS</b>	<b>\$ 4,126,406.26</b>



**TO:** Honorable Eau Claire County Board of Supervisors  
**FROM:** Finance Department  
**DATE:** May 11, 2020  
**SUBJECT:** 2020 Contingency Fund

Pursuant to Section 4.04 of the County Code of General Ordinances, the following is the status of the 2020 Contingency Fund as of May 11, 2020:

January 1, 2020	2020 Contingency Fund / Budget Allocation	\$300,000
February 19, 2020	Resolution 19-20/096: Authorizing a transfer from the 2020 contingency fund in the amount of \$15,000 to replace actuators at the Lake Eau Claire Dam	\$15,000
Balance Available		<u><u>\$285,000</u></u>

Eau Claire County  
 Trended Personnel Costs  
 Total Personnel  
 March 31, 2020

Fund	DEPT Description	2017 Actual	2018 Actual	2019 Actual	2020 Adjusted		% Actual to Budget
					Budget	2020 YTD Q1	
100 - GENERAL FUND	Child Support	1,068,056	1,133,360	1,154,021	1,214,804	237,846	19.58%
	CJCC	-	-	297,977	403,839	71,964	17.82%
	Corporation Counsel	662,305	675,712	716,460	676,348	123,670	18.28%
	County Admin	556,685	534,950	321,436	239,760	50,264	20.96%
	County Board	88,854	96,725	85,883	182,339	29,577	16.22%
	County Clerk	232,861	237,797	245,269	256,464	52,226	20.36%
	County Treasurer	268,234	268,651	264,350	282,564	59,372	21.01%
	Circuit Court	1,679,149	1,736,089	1,811,755	415,020	101,307	24.41%
	Clerk of Courts	-	-	-	1,446,400	269,596	18.64%
	District Attorney	893,884	882,988	912,539	1,060,150	195,209	18.41%
	Extension	106,649	112,238	120,699	125,757	24,088	19.15%
	Facilities	942,212	938,033	826,063	865,385	176,561	20.40%
	Finance Department	704,329	504,974	663,778	687,867	165,568	24.07%
	Human Resources	489,627	565,048	540,887	478,307	77,523	16.21%
	Information Systems	938,042	1,016,975	1,030,448	1,109,868	222,794	20.07%
	Parks & Forest	864,259	921,035	894,370	946,337	136,365	14.41%
	Planning & Development	1,419,666	1,386,476	1,409,913	1,490,673	315,378	21.16%
	Purchasing	320,691	314,770	-	-	-	NA
	Register of Deeds	197,717	243,668	238,169	301,169	55,525	18.44%
	Register of Probate	273,202	256,872	256,677	266,172	53,780	20.21%
	Sheriff	9,647,897	10,210,791	10,208,624	10,705,783	2,123,576	19.84%
	Veterans Office	219,512	173,132	216,534	224,216	47,054	20.99%
	Nondepartmental	30,283	126,315	-	-	-	NA
<b>100 - GENERAL FUND Total</b>		<b>21,604,113</b>	<b>22,336,599</b>	<b>22,215,849</b>	<b>23,379,222</b>	<b>4,589,242</b>	<b>19.63%</b>
202 - COUNTY LAND RECORDS		100,000	115,000	100,000	100,000	-	0.00%
205 - HUMAN SERVICES FUND		12,564,724	14,108,901	15,851,378	18,431,708	3,408,966	18.50%
211 - RECYCLING PROGRAM FUND		81,926	87,920	91,286	97,859	18,599	19.01%
215 - ADRC FUND		1,748,386	2,013,505	2,046,102	2,307,548	420,513	18.22%
602 - AIRPORT FUND		470,558	485,403	520,960	510,016	112,316	22.02%
701 - HIGHWAY		5,966,790	6,380,617	6,383,763	7,232,987	1,585,389	21.92%
703 - SELF INSURANCE FUND		119,985	120,525	207,441	202,442	35,093	17.33%
704 - HEALTH INSURANCE FUND		-	-	-	-	10	NA
<b>Grand Total</b>		<b>42,656,483</b>	<b>45,648,470</b>	<b>47,416,779</b>	<b>52,261,782</b>	<b>10,170,128</b>	<b>19.46%</b>

CJCC historically was included with County Admin for years prior to 2019.  
 Clerk of Courts historically was included with Circuit Court for years prior to 2020.  
 Human Services Fund includes Fund 100, Department: Juvenile and Fund 209  
 Sheriff's Department includes Fund 212 for years prior to 2019.  
 Nondepartmental expenditures were allocated to departments beginning with the 2019 budget year.

Eau Claire County  
Trended Personnel Costs  
Regular Wages  
March 31, 2020

Fund	DEPT Description	2017 Actual	2018 Actual	2019 Actual	2020 Adjusted	2020 YTD Q1	% Actual to Budget
					Budget		
100 - GENERAL FUND	Child Support	750,316	788,492	789,363	815,419	159,953	19.62%
	CJCC	-	-	210,641	282,531	53,126	18.80%
	Corporation Counsel	485,527	492,468	501,664	491,068	91,240	18.58%
	County Admin	416,222	407,401	252,466	189,988	38,958	20.51%
	County Board	48,738	49,032	42,700	118,566	20,163	17.01%
	County Clerk	158,512	164,891	169,575	174,191	35,156	20.18%
	County Treasurer	189,609	192,254	196,179	208,336	43,229	20.75%
	Circuit Court	1,100,922	1,171,442	1,216,360	284,880	66,753	23.43%
	Clerk of Courts	-	-	-	957,140	177,290	18.52%
	District Attorney	646,991	640,386	662,329	716,328	143,704	20.06%
	Extension	76,347	68,541	74,402	77,501	14,458	18.65%
	Facilities	627,790	626,864	555,285	585,261	102,996	17.60%
	Finance Department	395,156	368,238	498,775	514,178	96,564	18.78%
	Human Resources	354,806	410,518	371,385	327,951	57,031	17.39%
	Information Systems	676,869	753,830	753,674	796,894	161,059	20.21%
	Parks & Forest	638,035	684,407	650,455	696,649	97,326	13.97%
	Planning & Development	958,709	1,013,099	1,134,424	1,167,052	231,713	19.85%
	Purchasing	249,296	237,160	-	-	-	NA
	Register of Deeds	143,130	178,630	174,076	196,089	39,494	20.14%
	Register of Probate	191,599	192,275	200,614	206,687	41,457	20.06%
	Sheriff	5,694,208	6,036,997	6,419,150	6,967,155	1,351,801	19.40%
	Veterans Services	190,480	145,630	172,861	176,703	37,251	21.08%
100 - GENERAL FUND Total		13,993,260	14,622,554	15,046,378	15,950,568	3,060,721	19.19%
202 - COUNTY LAND RECORDS		100,000	115,000	-	-	-	NA
205 - HUMAN SERVICES FUND		8,761,039	9,753,998	11,138,116	12,687,927	2,344,713	18.48%
211 - RECYCLING PROGRAM FUND		62,677	70,517	72,576	78,008	14,475	18.56%
215 - ADRC FUND		1,252,093	1,463,955	1,477,798	1,635,599	298,849	18.27%
602 - AIRPORT FUND		329,996	342,966	360,870	358,520	77,369	21.58%
701 - HIGHWAY		3,741,651	3,848,719	2,322,689	2,718,550	596,057	21.93%
703 - SELF INSURANCE FUND		98,812	95,697	122,927	149,825	23,806	15.89%
704 - HEALTH INSURANCE FUND		-	-	-	-	-	NA
Grand Total		28,339,528	30,313,407	30,541,354	33,578,997	6,415,989	19.11%

CJCC historically was included with County Admin for years prior to 2019.

Clerk of Courts historically was included with Circuit Court for years prior to 2020.

Human Services Fund includes Fund 100, Department: Juvenile and Fund 209

Sheriff's Department includes Fund 212 for years prior to 2019.

Nondepartmental expenditures were allocated to departments beginning with the 2019 budget year.

Eau Claire County  
 Trended Personnel Costs  
 Overtime Wages  
 March 31, 2020

Fund	DEPT Description	2017 Actual	2018 Actual	2019 Actual	2020 Adjusted Budget	2020 YTD Q1	% Actual to Budget
100 - GENERAL FUND	Child Support	169	191	229	-	-	NA
	CJCC	-	-	3	-	-	NA
	Corporation Counsel	177	828	2,544	-	3	NA
	County Admin	-	586	91	-	-	NA
	County Board	-	-	-	-	-	NA
	County Clerk	-	18	2	-	-	NA
	County Treasurer	781	911	1,561	1,000	206	20.60%
	Circuit Court	40	394	880	-	19	NA
	Clerk of Courts	-	-	-	100	334	334.31%
	District Attorney	259	573	137	-	3	NA
	Extension	-	625	141	-	-	NA
	Facilities	7,698	11,098	13,245	17,000	3,809	22.40%
	Finance Department	4,448	1,839	2,022	4,000	581	14.52%
	Human Resources	12	107	15	-	-	NA
	Information Systems	354	856	176	-	4	NA
	Parks & Forest	6,091	5,944	10,430	5,719	880	15.38%
	Planning & Development	3,922	322	727	4,050	80	1.98%
	Purchasing	7	7	-	-	-	NA
	Register of Deeds	11	-	-	-	-	NA
	Register of Probate	-	-	-	-	-	NA
	Sheriff	864,751	928,509	750,607	609,723	128,659	21.10%
	Veterans Services	-	70	202	400	27	6.83%
<b>100 - GENERAL FUND Total</b>		<b>888,719</b>	<b>952,879</b>	<b>783,013</b>	<b>641,992</b>	<b>134,606</b>	<b>20.97%</b>
202 - COUNTY LAND RECORDS		-	-	-	-	-	NA
205 - HUMAN SERVICES FUND		36,783	98,016	68,154	-	14,291	NA
211 - RECYCLING PROGRAM FUND		-	-	149	-	-	NA
215 - ADRC FUND		1,315	5,088	557	-	238	NA
602 - AIRPORT FUND		7,477	9,507	20,889	12,000	4,182	34.85%
701 - HIGHWAY		147,902	216,444	347,803	197,000	79,322	40.26%
703 - SELF INSURANCE FUND		-	-	-	-	-	NA
704 - HEALTH INSURANCE FUND		-	-	-	-	-	NA
<b>Grand Total</b>		<b>1,082,197</b>	<b>1,281,933</b>	<b>1,220,564</b>	<b>850,992</b>	<b>232,639</b>	<b>27.34%</b>

CJCC historically was included with County Admin for years prior to 2019.  
 Clerk of Courts historically was included with Circuit Court for years prior to 2020.  
 Human Services Fund includes Fund 100, Department: Juvenile and Fund 209  
 Sheriff's Department includes Fund 212 for years prior to 2019.  
 Nondepartmental expenditures were allocated to departments beginning with the 2019 budget year.

Eau Claire County  
Trended Personnel Costs  
Payroll Benefits  
March 31, 2020

Fund	DEPT Description	2017 Actual	2018 Actual	2019 Actual	2020 Adjusted Budget	2020 YTD Q1	% Actual to Budget
100 - GENERAL FUND	Child Support	317,571	344,678	364,429	399,385	77,893	19.50%
	CJCC	-	-	87,333	121,307	18,839	15.53%
	Corporation Counsel	176,601	182,416	212,252	185,280	32,426	17.50%
	County Admin	140,464	126,962	68,878	49,772	11,306	22.72%
	County Board	40,116	47,693	43,182	63,773	9,414	14.76%
	County Clerk	74,349	72,888	75,691	82,273	17,070	20.75%
	County Treasurer	77,843	75,486	66,610	73,228	15,937	21.76%
	Circuit Court	578,187	564,253	594,515	130,140	34,535	26.54%
	Clerk of Courts	-	-	-	489,160	91,972	18.80%
	District Attorney	246,634	242,030	250,072	343,822	51,502	14.98%
	Extension	30,302	43,072	46,156	48,256	9,631	19.96%
	Facilities	306,724	300,070	257,534	263,124	69,756	26.51%
	Finance Department	304,725	134,897	162,981	169,689	68,423	40.32%
	Human Resources	134,810	154,423	169,487	150,356	20,492	13.63%
	Information Systems	260,819	262,288	276,599	312,974	61,731	19.72%
	Parks & Forest	220,133	230,684	233,484	243,969	38,160	15.64%
	Planning & Development	457,035	373,055	274,762	319,571	83,585	26.16%
	Purchasing	71,388	77,603	-	-	-	NA
	Register of Deeds	54,576	65,039	64,093	105,080	16,030	15.26%
	Register of Probate	81,603	64,597	56,063	59,485	12,323	20.72%
	Sheriff	3,088,938	3,245,285	3,038,867	3,128,905	643,115	20.55%
	Veterans Services	29,032	27,431	43,471	47,113	9,776	20.75%
	Nondepartmental	30,283	126,315	-	-	-	NA
<b>100 - GENERAL FUND Total</b>		<b>6,722,133</b>	<b>6,761,165</b>	<b>6,386,458</b>	<b>6,786,662</b>	<b>1,393,916</b>	<b>20.54%</b>
202 - COUNTY LAND RECORDS FUND		-	-	100,000	100,000	-	0.00%
205 - HUMAN SERVICES FUND		3,766,903	4,256,886	4,645,108	5,743,781	1,049,962	18.28%
211 - RECYCLING PROGRAM FUND		19,249	17,403	18,562	19,851	4,124	20.77%
215 - ADRC FUND		494,978	544,463	567,747	671,949	121,427	18.07%
602 - AIRPORT FUND		133,085	132,931	139,201	139,496	30,765	22.05%
701 - HIGHWAY		2,077,236	2,315,454	3,713,270	4,317,437	910,011	21.08%
703 - SELF INSURANCE FUND		21,174	24,827	84,514	52,617	11,287	21.45%
704 - HEALTH INSURANCE FUND		-	-	-	-	10	NA
<b>Grand Total</b>		<b>13,234,758</b>	<b>14,053,130</b>	<b>15,654,861</b>	<b>17,831,794</b>	<b>3,521,501</b>	<b>19.75%</b>

Payroll Benefits includes, but is not limited to, health insurance premiums, health insurance incentive, HSA contributions, and employee benefit administrative fees.

CJCC historically was included with County Admin for years prior to 2019.  
Clerk of Courts historically was included with Circuit Court for years prior to 2020.  
Human Services Fund includes Fund 100, Department: Juvenile and Fund 209  
Sheriff's Department includes Fund 212 for years prior to 2019.  
Nondepartmental expenditures were allocated to departments beginning with the 2019 budget year.

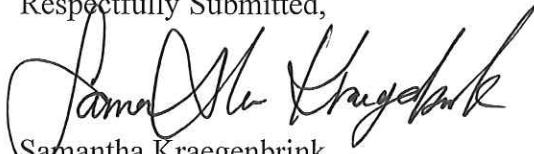
**FACT SHEET**

**TO FILE NO. 20-21/025**

This resolution recognizes and thanks Eau Claire County Board Supervisors for their dedication to Eau Claire County and its citizens.

Fiscal Impact: None.

Respectfully Submitted,

A handwritten signature in black ink, appearing to read "Samantha Kraegenbrink". The signature is fluid and cursive, with a large initial "S" and "K".

Samantha Kraegenbrink  
Administrative Specialist III

1 Enrolled No.

2 RESOLUTION

3 File No. 20-21/025

4 - RECOGNIZING, COMMENDING, AND THANKING EAU CLAIRE COUNTY BOARD  
5 SUPERVISORS UPON THEIR DEDICATED YEARS OF SERVICE -

6 WHEREAS, Patrick LaVelle has exhibited extraordinary devotion to public service while  
7 serving on the Eau Claire County Board of Supervisors since April 1986; and

8  
9 WHEREAS, Bert Moritz has exhibited extraordinary devotion to public service while serving  
10 on the Eau Claire County Board of Supervisors since April 2018; and

11  
12 WHEREAS, Patrick LaVelle and Bert Mortiz have been loyal and dedicated legislators who  
13 worked diligently on standing committees as well as represented the county board on adjunct boards,  
14 commissions, and councils.

15  
16 NOW, THEREFORE BE IT RESOLVED by the Eau Claire County Board of Supervisors  
17 that Patrick LaVelle and Bert Mortiz are hereby recognized, commended, and thanked for their  
18 dedicated service as Eau Claire County Board Supervisors.

19  
20  
21 ADOPTED:

22  
23  
24  
25 \_\_\_\_\_  
26 Nick Smiar, Chair of the Eau Claire County Board of  
27 Supervisors

28  
29  
30 Resolution 20-21/025

**APPROVED BY  
CORPORATION COUNSEL  
AS TO FORM**

**Reviewed by Finance Dept.  
for Fiscal Impact**

**FACT SHEET**  
**File No. 20-21/015**

**RE:** Rezone 1.48 acres +/- of land owned by the applicant's from the A-2/R-H (Agricultural-Residential, Rural Homes) Districts to C-1 (Neighborhood Business) District to allow for a three-unit multi-family residential development (permitted with a Conditional Use Permit)

**Legal Description:** Part of the Northeast ¼ of the Northeast ¼ Section 15, Township 26 North Range 9 West, Town of Washington, Eau Claire County, WI (complete legal description attached)

**Location:** 6420 Hart Road, Eau Claire, WI 54702

**Size of area to be rezoned:** 1.48 acres +/-

**ADJACENT ZONING & LAND USES:**

LOCATION	ZONING	LAND USE
<b>Subject</b>	A-2 / R-H	Accessory structure (Garage)
<b>North</b>	R-H	Single-family residences
<b>East</b>	R-H / C-3	Commercial service station; Agricultural fields; Single-family residences
<b>South</b>	R-H	Single-family residences
<b>West</b>	R-H	Woodland

**LAND USE PLANS:** The Eau Claire County and Town of Washington Future Land Use Maps include the property in the Rural Commercial (RC) planning area.

**Eau Claire County Rural Commercial Comprehensive Plan Intent and Description:**

*The primary intent of this classification is to "identify areas suitable for planned commercial development. There are some existing scattered commercial developments throughout the County and these areas are expected to stay in commercial use."* Note that the proposed triplex multi-family residential development is permitted with a Conditional Use Permit (CUP) in the C-1 District.

**Staff Conclusions and Recommendation:** The proposed C-1 zoning district is consistent with the intent and description and the applicable policies of the Eau Claire County Comprehensive Plan and the proposed triplex multiple family residential development is compatible with surrounding land uses. Therefore, staff recommends approval of the proposed rezone.

**Town Board Action:** The Washington Town Board considered this rezoning petition on Thursday, April 23, 2020 and recommended approval (5-0 vote).

**Committee Action:** The Eau Claire County Committee on Planning and Development conducted the required public hearing on Tuesday, May 12, 2020 regarding the proposed rezoning. On a vote of 5 in favor and 0 against, the Committee recommends approval of the rezoning petition to the County Board. The committee considered the applicant's testimony, as well as the Town Board's and staff's recommendations in their deliberations.

Respectfully submitted on behalf of the Committee on Planning and Development,



Matt Michels, AICP  
Senior Planner



2  
3 **-AMENDING THE 1982 OFFICIAL ZONING DISTRICT BOUNDARY MAP FOR THE**  
4 **TOWN OF WASHINGTON -**

5  
6 The County Board of Supervisors of the County of Eau Claire does ordain as follows:

7  
8 **SECTION 1.** That the 1982 Official Zoning District Boundary Map for the Town of  
9 Washington , described as follows:

10  
11 A parcel of land being part of the Northeast ¼ of the Northeast ¼ of  
12 Section 15, Township 26 North, Range 9 West, commencing at the  
13 Northeast corner of said Section 15, thence N86°46'58"W along the north  
14 line of said Northeast ¼ 358.26 feet;  
15 Thence S17°08'50"E 365.30 feet to the point of beginning;  
16 Thence S83°04'42W 291.14 feet;  
17 Thence S14°39'29"E 226.06 feet;  
18 Thence N83°04'42"E 10.89 feet;  
19 Thence 4.84 feet along the arc of a curve concave west, radius of 3492.71,  
20 cord bearing and distance of N16°26'16"W 4.84 feet;  
21 Thence N82°29'01"E 290.22 feet;  
22 Thence 161.83 feet along the arc of a curve concave west, radius of  
23 3779.84, chord bearing and distance of N16°57'15W' 161.82 feet;  
24 Thence N18°14'42"W 57.99 feet to the point of beginning.

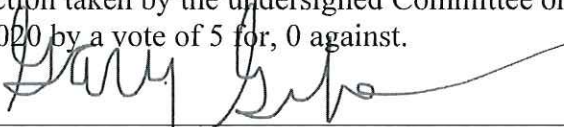
25  
26 Said described parcel of land containing 1.48 acres +/-, of land and is  
27 subject to the easements and restrictions of record to be reclassified from  
28 the RH & A-2 District to the C-1 District.

29  
30 **SECTION 2.** Where a certified survey map is required and may alter the above  
31 described property description, the official zoning district map for the  
32 town shall be automatically amended to reflect the property description of  
33 the certified survey map.

34  
35  
36 **ENACTED:**

I hereby certify that the foregoing correctly represents the  
action taken by the undersigned Committee on May 12,  
2020 by a vote of 5 for, 0 against.

37  
38 **Reviewed by Finance Dept.**  
39 **for Fiscal Impact**  
40  
41 -----

  
42  
43 \_\_\_\_\_  
44 **Planning & Development Committee, Chairperson**

45  
46 **CC**

47 Dated this 12<sup>th</sup> day of May 2020

48 **ORDINANCE 20-21/015**  
49

**APPROVED BY**  
**CORPORATION COUNSEL**  
**AS TO FORM**

Eau Claire County  
 Department of Planning and Development  
 Eau Claire County Courthouse  
 721 Oxford Avenue, Room 3344  
 Eau Claire, Wisconsin 54703  
 (715) 839-4741

*Sup. Dist. 10 - Nancy Coffey*

Application Accepted:	4/1/2020
Accepted By:	Matt Michels
Receipt Number:	12345
Town Hearing Date:	04/16/2020
Scheduled Hearing Date:	5/12/2020
Application No:	RZN-0005-20
Appl Status:	Pending

**Rezoning - County**

Pursuant to the procedure described in Wisconsin Statutes Section 59.69(5), I hereby petition the Eau Claire County Board of Supervisors to amend the Zoning District from:

Existing Zoning District: **RH**      Proposed Zoning District(s): **C1**      Acres to be Rezoned: **1.48**

Portion Of The Ne1/4 Ne1/4 Of Section 15, T26N, R9W, Town Of Washington, Eau Claire County, Wi

---

<b>Owner/Applicant Name(s):</b>	<b>Address:</b>	<b>Telephone:</b>
Sean Bohan	(appl) 635 635 FAIRFAX ST ALTOONA	715-552-0330(W)
Daniel F Mauer	(ow) PO BOX 1987 EAU CLAIRE	715-828-0845(C)
Regina B Mauer	(ow) PO BOX 1987 EAU CLAIRE	

---

**Site Address(es):**  
6420 HART RD EAU CLAIRE

**Property Description:** Sec 15 Twn 26 Rge 09      **Town of Washington**      **Lot Area:** 1.480      **ACRES**

**Zoning District(s):** A2      RH

---

**Overlay District:**     Shoreland     Flood Plain     Airport     Wellhead Protection     Non-Metallic Mining

Check Applicable

---

<b>PIN</b>	<b>Alternate No</b>	<b>Parcel No</b>	<b>Legal (partial)</b>
1802422609151100005	024117607000	26.9.15.1-1-E,X	PRT NE-NE COM NE COR SD 40 TN N85*52'25"W ALG N LN SD

I certify by my signature that all the information presented herein is true and correct to the best of my knowledge. I give permission for the staff of the Eau Claire County Department of Planning and Development to enter my property for the purpose of collecting information to be used as part of the public hearing process. I further agree to withdraw this application if substantive false or incorrect information has been included.

Owner/Agent Signature \_\_\_\_\_ Date \_\_\_\_\_

Check if DATCAP must be notified \_\_\_\_\_

Check if DNR to Receive Copy \_\_\_\_\_

At the public hearing, the applicant may appear in person or through an agent or an attorney of his/her choice. The applicant/agent/attorney may present testimony, evidence and arguments in support of the application. All site plans, pictures, etc. become the property of the Department, and will remain in the file.



Eau Claire County  
 Department of Planning and Development  
 Eau Claire County Courthouse  
 721 Oxford Avenue, Room 3344  
 Eau Claire, Wisconsin 54703.  
 (715) 839-4741

Application Accepted:	4/1/20
Accepted By:	MM
Receipt Number:	
Town Hearing Date:	4/16/20
Scheduled Hearing Date:	5/12/20

## REZONING APPLICATION

Pursuant to the procedure described in Wisconsin Statutes Section 59.69(5), I hereby petition the Eau Claire County Board of Supervisors to amend the Zoning District from:

Existing Zoning District: A2 / RH	Proposed Zoning District(s): C1
Acres to be rezoned: 1.48	

Property Owner Name: Danial Mauer	Phone# (715) 828-0845
Mailing Address: PO Box 1987 Eau Claire WI 54702	
Email Address: dmauer@btrac.com	

Agent Name: Sean P. Bohan, P.E. Advanced Engineering Concepts	Phone# (715) 552-0330
Mailing Address: 1360 International Drive Eau CLaire WI 54701	
Email Address: sbohan@rls-aec.com	

### SITE INFORMATION

Site Address: 6420 Hart Road Eau Claire WI	
Property Description: NE ¼ NE ¼ Sec. 15, T26 N, R 9 W, Town of Washington	
Zoning District:	Code Section(s):
Overlay District: Check Applicable	<input type="checkbox"/> Shoreland <input type="checkbox"/> Floodplain <input type="checkbox"/> Airport <input type="checkbox"/> Wellhead Protection <input type="checkbox"/> Non-Metallic Mining
Computer #(s):	024 - 1176 - 07 - 000

### GENERAL APPLICATION REQUIREMENTS

Applications will not be accepted until the applicant has met with department staff to review the application and determine if all necessary information has been provided. All information from the checklist must be included.

<input checked="" type="checkbox"/> Complete attached information sheet	<input checked="" type="checkbox"/> Contact the Town to coordinate a recommendation on the application
<input checked="" type="checkbox"/> Provide legal description of property to be rezoned	<input checked="" type="checkbox"/> Provide \$565.00 application fee (non-refundable), payable to the Eau Claire County Treasurer (\$500.00 application processing fee and \$65.00 mapping surcharge fee)

I certify by my signature that all information presented herein is true and correct to the best of my knowledge. I give permission for the staff of the Eau Claire County Department of Planning and Development to enter my property for the purpose of collecting information to be used as part of the public hearing process. I further agree to withdraw this application if substantive false or incorrect information has been included.

Owner/Agent Signature

Date 3-31-20

At the public hearing, the applicant may appear in person or through an agent or an attorney of his/her choice. The applicant/agent/attorney may present testimony, evidence and arguments in support of the application. All site plans, pictures, etc. become the property of the Department, and will remain in the file.

## REZONING APPLICATION CHECKLIST

Applications are due by Tuesday at 12:00 PM three weeks prior to the Committee on Planning and Development meeting. The application must include the items listed below. After a preliminary review, additional information may be needed. A hearing will not be scheduled until the application is deemed complete. Applications are considered complete when all materials and associated fees are received and approved by staff.

### Required Application Items:

- Application must be signed by the property owner(s)
- A legal description of land and address of land to be rezoned
- Complete the attached supplemental rezoning information sheet
  - Describe the reason for the request
  - Describe how the proposed zoning district and the uses allowed in that district are appropriate for the selected location, and how the proposed change in zoning will uphold the purpose of the zoning ordinance
  - Explain and justify why this particular property is under consideration for rezoning
    - For rezoning requests from A-P to any zoning district other than the AR district must consider the factors in Section 18.32.055 A. – D.
    - For rezoning requests from the A-P to the AR zoning district must consider the factors in Section 18.06.050 A. – D.
    - For rezoning requests out of the Shoreland-wetland district must consider Section 18.19.100 B

The rezoning procedures and details have been outlined in the rezoning brochure, which is available at the Department of Planning and Development.

SUPPLEMENTAL INFORMATION FOR A REZONING PETITION

In order to process your application as quickly as possible, please fill in all of the sections below that are applicable to your request, and attach all appropriate maps or plans described below that are relevant to your request.

■ Describe the reason(s) for your rezoning request:

This project will be requesting a rezone from A2/RH to C1. In addition, this project will be submitting a Conditional Use Permit (CUP) in order to construct a 3-plex on the site. We feel that this is a good compromise and use of the property, especially seeing as the Town has the property as rural commercial on their Comprehensive Plan. The owners have taken into consideration that the surrounding properties are currently residential and therefore feel that this will be a good fit.

■ When evaluating a rezoning petition, staff from the Eau Claire County Department of Planning and Development consider whether the purpose of the proposed zoning district and the uses allowed in the district are appropriate for the selected location. Staff also considers whether the change in zoning will uphold the purpose of the zoning ordinance, which is to separate incompatible land uses from one another, to maintain public health and safety, to protect and conserve natural resources, to prevent overcrowding, to preserve property values, and to maintain the general welfare of the citizens. Please describe how the proposed zoning district and the uses allowed in that district are appropriate for the selected location, and how the proposed change in zoning will uphold the purpose of the zoning ordinance.

Town and County future land use plan has this parcel as Rural Commercial. The surrounding properties are currently residential. By rezoning from A2/RH to C1 and then submitting a CUP for a 3-plex building is a great compromise and leaves the area as residential.

Rezoning petitions to change the zoning of a parcel from the A-P Agricultural Preservation District to any other District must be based upon findings that consider the following factors:

- 1) The land is better suited for a use not allowed in the A-P Agricultural Preservation zoning district based on a review of soil types, historical productivity, location, and adjacent land uses;
- 2) The rezoning is consistent with any applicable comprehensive plans;
- 3) The rezoning is substantially consistent with the certified Eau Claire County Farmland Preservation Plan; and
- 4) The rezoning will not substantially impair or limit current or future agricultural use of surrounding parcels of land that are zoned for or legally restricted to agricultural use.

If you are petitioning to rezone land from an A-P District to another district, please describe how the proposed change in zoning will be consistent with the four findings listed here.

Being part of the Northeast  $\frac{1}{4}$  of the Northeast  $\frac{1}{4}$  Section 15, Township 26 North Range 9 West, Town of Washington, Eau Claire County Wisconsin described as follows:

Commencing at the Northeast corner of said Section 15, thence  $N86^{\circ}46'58''W$  along the north line of said Northeast  $\frac{1}{4}$  358.26 feet;

Thence  $S17^{\circ}08'50''E$  365.30 feet to the point of beginning;

Thence  $S83^{\circ}04'42''W$  291.14 feet;

Thence  $S14^{\circ}39'29''E$  226.06 feet;

Thence  $N83^{\circ}04'42''E$  10.89 feet;

Thence 4.84 feet along the arc of a curve concave west, radius of 3492.71, chord bearing and distance of  $N16^{\circ}26'16''W$  4.84 feet;

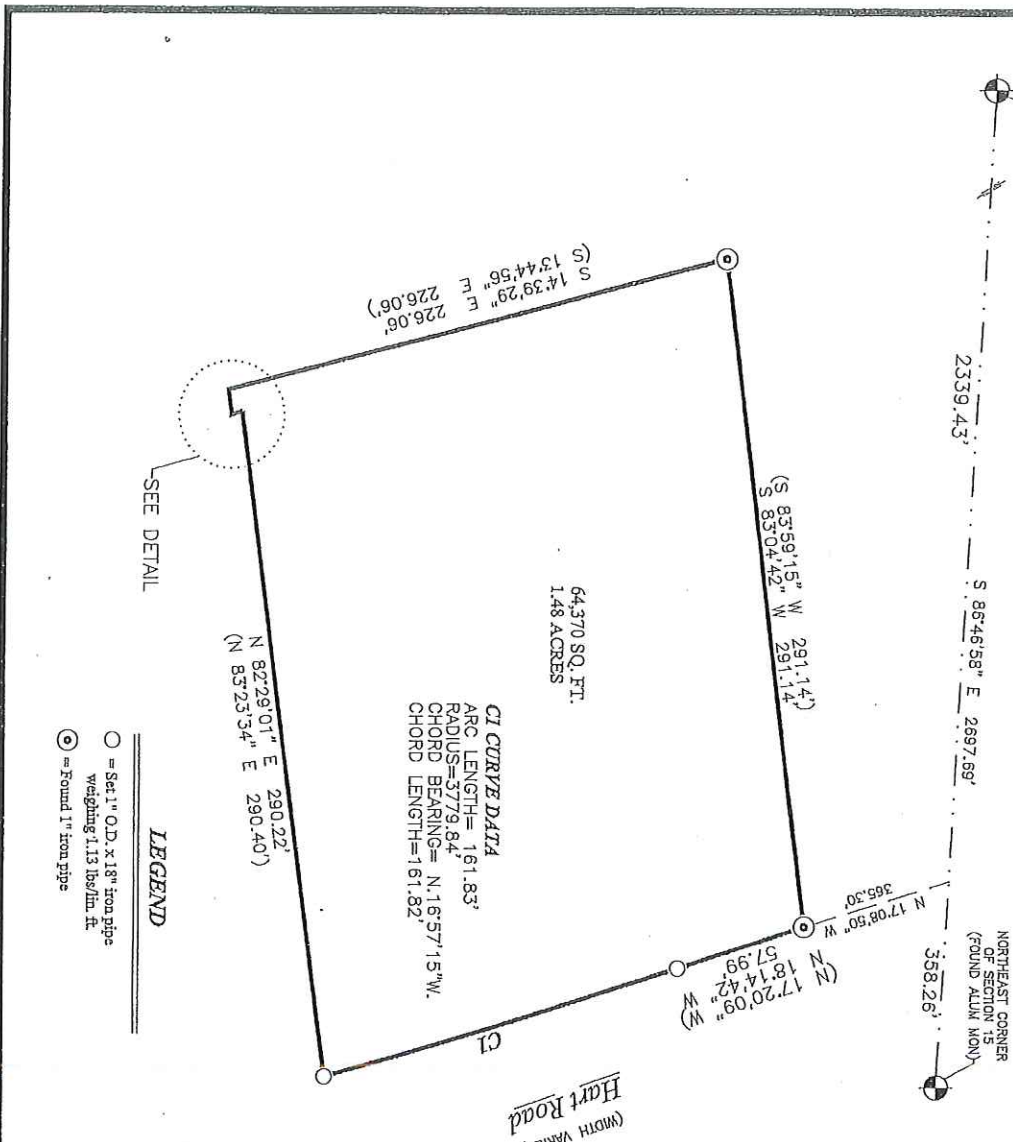
Thence  $N82^{\circ}29'01''E$  290.22 feet;

Thence 161.83 feet along the arc of a curve concave west, radius of 3779.84, chord bearing and distance of  $N16^{\circ}57'15''W$  161.82 feet;

Thence  $N18^{\circ}14'42''W$  57.99 feet to the point of beginning.

# PLAT OF SURVEY

Part of the of the Northeast 1/4 of the Northeast 1/4, Section 15, Town 26 North, Range 9 West, Town of Washington, Eau Claire County, Wisconsin



Hart Road  
(WIDTH VARIES)

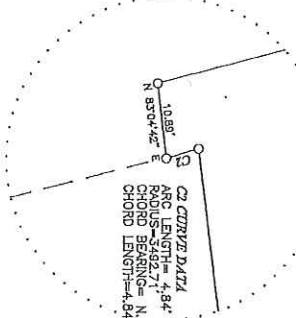
64,370 SQ. FT.  
1.48 ACRES

CI CURVE DATA  
ARC LENGTH= 161.83'  
RADIUS=5779.84'  
CHORD BEARING= N.16°57'15"W.  
CHORD LENGTH=161.82'

SEE DETAIL

- LEGEND**
- = Sect 1" O.D. x 1 1/8" iron pipe
  - ⊙ = Found 1" iron pipe

DETAIL



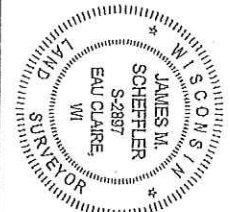
SCALE 1"=50'  
BEARINGS ARE REFERENCED TO THE NORTH LINE OF THE NORTHEAST 1/4 OF SECTION 15 ASSUMED TO BEAR S86°45'33"E

**SURVEYOR'S CERTIFICATE.**

I, James M. Scheffler, Professional Land Surveyor in the State of Wisconsin, do hereby certify that by the order of Dan & Regina Kauer, I have surveyed and mapped and made this survey according to the official records and that to the best of my knowledge and belief the accompanying map is a true and correct representation thereof.

Dated this 31<sup>ST</sup> day of August, 2015.

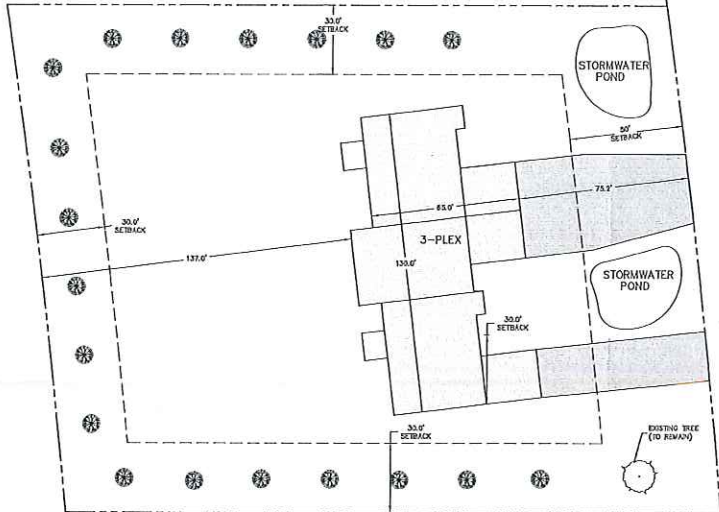
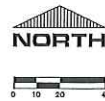
*James M. Scheffler*  
James M. Scheffler, Professional Land Surveyor, S-2897



SCHEFFLER LAND SURVEYING LLC  
ph: (715) 308-3010



LANDSCAPE LEGEND:	
	EXISTING DECIDUOUS TREE
	PROPOSED EVERGREEN TREE



HART ROAD

NO.	DATE	REVISIONS	DRAWN BY	DESIGN BY	CHECKED

PROJ. NO.  
1800X

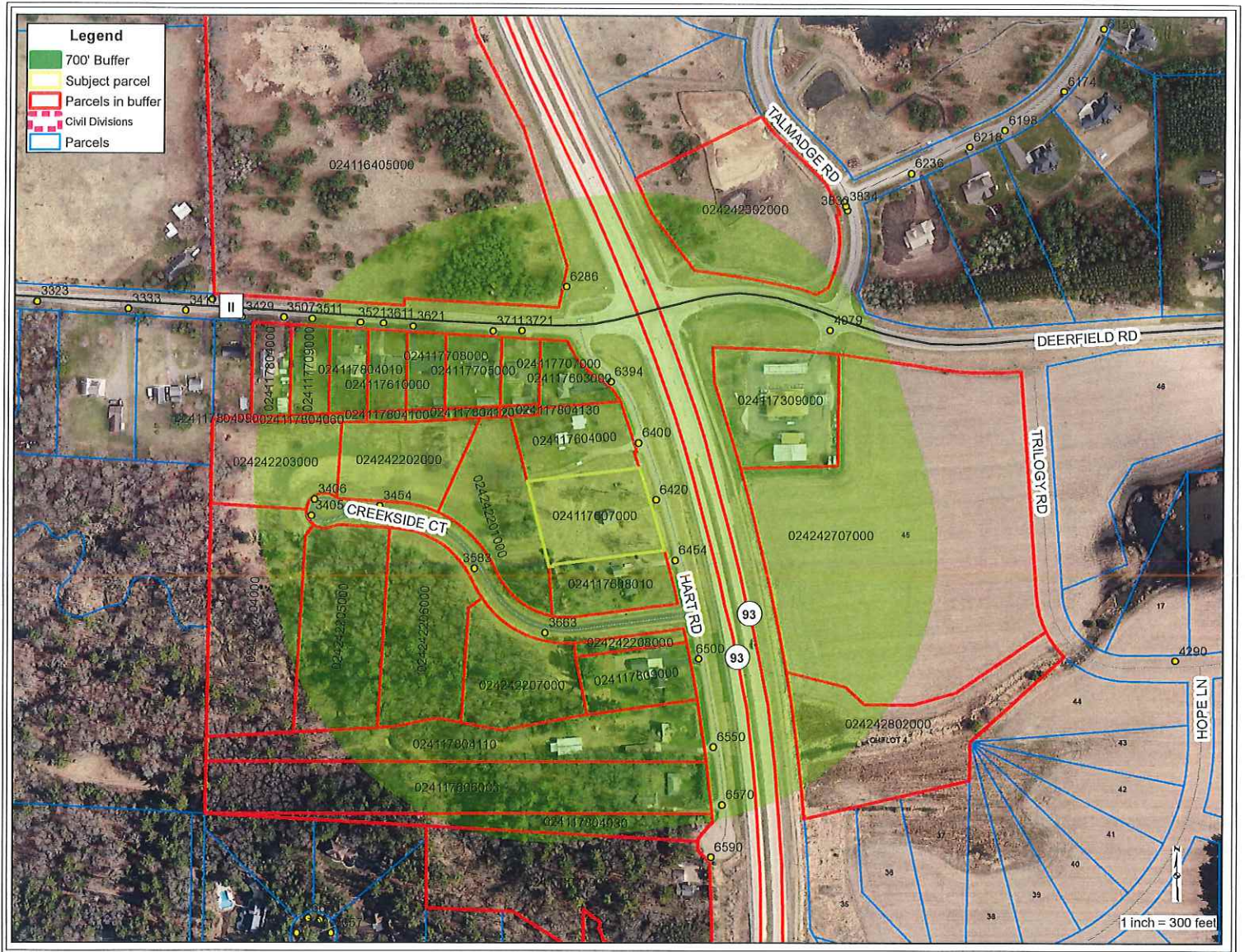


ADVANCED ENGINEERING CONCEPTS  
1210 INTERNATIONAL DR, SUITE #1  
EAU CLAIRE, WI 54601  
PH: 715-832-6330  
WWW.AEC-CONCEPTS.COM  
COPYRIGHT 2019 AEC LLC.

XXXXXXXX  
XXXXXX  
XXXXXXXXXX

PROJECT  
DEVELOPER  
ADDRESS  
EAU CLAIRE, WI

DWG NAME	X
1800X.PDX	X
1800X	
DATE	
X/2019	X



FirstName	LastName	Address	City	State	Zip
JUNE	ANDERSON	3511 DEERFIELD RD	EAU CLAIRE	WI	54701-8577
D	BRAATZ	3406 CREEKSIDE CT	EAU CLAIRE	WI	54701
DAVID	CRAMER	205 S CROSSCREEK DR	CHANDLER	AZ	85225-5424
COLIN	DAVISON	3721 DEERFIELD RD	EAU CLAIRE	WI	54701-8579
LOREN	DEBORD	6394 HART RD	EAU CLAIRE	WI	54701-5095
RANDY	FENNER	6500 HART RD	EAU CLAIRE	WI	54701-5097
JUSTIN	GREENAWALD	6454 HART RD	EAU CLAIRE	WI	54701-5096
KIRK	KARG	3711 DEERFIELD RD	EAU CLAIRE	WI	54701-8579
MARK	KISSINGER	2619 MERCURY AVE	EAU CLAIRE	WI	54703-1037
DANIEL	MAUER	PO BOX 1987	EAU CLAIRE	WI	54702-1987
	RAETHER PROPERTIES LLC	N 1234 COUNTY HIGHWAY MD	SARONA	WI	54870-9261
JOHN F & JAMIE A	RIGGS	6590 HART RD	EAU CLAIRE	WI	54701-5097
GERMAINE M	SCHEUERMANN	3507 DEERFIELD RD	EAU CLAIRE	WI	54701-8577
MARY	SLUGA	3611 DEERFIELD RD	EAU CLAIRE	WI	54701-8578
	SOUTHSIDE EC PROPERTIES LLC	6176 SANDSTONE RD	EAU CLAIRE	WI	54701
KYLE	STELTER	14686 46TH AVE N	CHIPPEWA FALLS	WI	54729-4864
STEVEN	STRAND	6550 HART RD	EAU CLAIRE	WI	54701-5097
DAVID E & PATRICIA J	STRAUCH	3521 DEERFIELD RD	EAU CLAIRE	WI	54701-8577
SHARON	THOBABEN	S 158 SEGERSTROM RD	MONDOVI	WI	54755-7856
	TRILLIUM BUSINESS PARK LLC	4206 HEARTLAND DR W	EAU CLAIRE	WI	54701-5138
DUSTIN	VON RUDEN	6400 HART RD	EAU CLAIRE	WI	54701-7996
JASON	WEAVER	4650 S OAKWOOD HILLS PKWY	EAU CLAIRE	WI	54701-5096
GRANT	WEWERKA	4319 JEFFERS RD STE 150	EAU CLAIRE	WI	54701-7797
JAYNEE	WEWERKA	3621 DEERFIELD RD	EAU CLAIRE	WI	54701-7797
	WURZER BUILDERS INC		EAU CLAIRE	WI	54703-3926
THOMAS	ZIMPEL		EAU CLAIRE	WI	54701-8578

**FACT SHEET**  
**File No. 20-21/014**

**RE:** Rezone 2.3 acres +/- of land from A-P (Agricultural Preservation) District to A-2 (Agricultural-Residential) District to allow the applicant to divide the existing residence from the agricultural property.

**Legal Description and Location:** Part of the SW<sup>1</sup>/<sub>4</sub> NE<sup>1</sup>/<sub>4</sub>, Section 5, Township 25 North, Range 9 West, Town of Pleasant Valley, Eau Claire County, Wisconsin (complete legal description attached).

**Size of area to be rezoned:** 2.3 acres +/-

**ADJACENT ZONING & LAND USES:**

LOCATION	ZONING	LAND USE
Subject	A-P	Vacant; Woodlands
North	A-P	Farmstead; Single-Family Residence; Woodland
East	A-P	Farmstead; Single-Family Residence; Agricultural Fields
South	A-P	Vacant; Woodlands
West	A-P	Single-Family Residences, Woodland, Agricultural Fields; Farmstead

**LAND USE PLANS:** The Eau Claire County and the Town of Pleasant Valley Future Land Use Maps include the property in the Rural Lands (RL) planning area. Following are descriptions of the intent of the applicable County and Town comprehensive plan future land use categories and applicable policies.

**Eau Claire County Rural Lands (RL) Intent and Description:** *The primary intent of these areas is to preserve productive agricultural lands, protect existing farm & forestry operations from encroachment by incompatible uses, promote further investments in farming, maintain farmer eligibility for incentive programs, and preserve wildlife habitat and open spaces. In other words, to preserve the rural character of these areas.*

**Staff Conclusions and Recommendation:** Staff finds that the proposed rezoning request substantially conforms with the Eau Claire County Comprehensive Plan. The Eau Claire County Comprehensive Plan recognizes that the proposed A-2 zoning district is consistent and therefore allowed within the mapped future land use designation.

**Town Board Action:** The Pleasant Town Board considered this rezoning petition on Monday, May 11, 2020 and recommended approval (3-0 vote).

**Committee Action:** The Eau Claire County Committee on Planning and Development conducted the required public hearing on Tuesday, May 12, 2020 regarding the proposed rezoning. On a vote of 4 in favor and 1 against, the Committee recommends approval of the rezoning petition to the County Board. The committee considered the applicant's testimony as well as the Town Board's and staff's recommendations in their deliberations. In addition, two members of the public were in attendance to speak against the rezoning petition.

Respectfully submitted on behalf of the Committee on Planning and Development,



Matt Michels, AICP  
Senior Planner

2  
3 -AMENDING THE 1982 OFFICIAL ZONING DISTRICT BOUNDARY MAP FOR THE  
4 TOWN OF PLEASANT VALLEY -  
5

6 The County Board of Supervisors of the County of Eau Claire does ordain as follows:  
7

8 **SECTION 1.** That the 1982 Official Zoning District Boundary Map for the Town of Pleasant  
9 Valley, described as follows:

10  
11 A parcel of land being in the Southwest ¼ of the Northeast ¼ of Section 5,  
12 Township 25 North, Range 9 West, commencing at the North ¼ corner, thence  
13 S.01°30'37"W along the West line of said Northeast ¼ a distance of 1315.38  
14 feet;  
15 Thence S.89°52'17"E. 1316.54 feet to the East line of said Northwest ¼ of the  
16 Northeast ¼;  
17 Thence S.01°42'17"W along said East line 198.01 feet;  
18 Thence N89°52'17"W along the North line of said Southwest ¼ of the Northeast  
19 ¼ 553.29 feet to the point of beginning;  
20 Thence S.25°35'45"E. 189.18 feet;  
21 Thence S.66°26'41"W. 86.36 feet;  
22 Thence S.80°21'00"W. 172.71 feet;  
23 Thence N.11°38'56"W. 113.25 feet;  
24 Thence N.83°34'09"W. 470.36 feet;  
25 Thence N.89°52'45"W. 106.50 feet; to the West line of said Northeast ¼;  
26 Thence N.01°30'37"E along said West line a distance of 71.98 feet to the  
27 Northwest corner of said Southwest ¼ of the Northeast ¼;  
28 Thence S.89°52'17"E. along the North line of said Southwest ¼ of the Northeast  
29 ¼ a distance of 762.58 feet to the point of beginning and being subject to existing  
30 easements.

31  
32 Said described parcel of land containing 2 acres +/-, of land and is subject to the  
33 easements and restrictions of record to be reclassified from the AP District to the  
34 A-2 District.  
35

36 **SECTION 2.** Where a certified survey map is required and may alter the above described  
37 property description, the official zoning district map for the town shall be  
38 automatically amended to reflect the property description of the certified survey  
39 map.  
40

41  
42 ENACTED:

I hereby certify that the foregoing correctly represents the action  
taken by the undersigned Committee on May 12, 2020 by a vote  
of 4 for, 1 against.

43  
44 **Reviewed by Finance Dept.**  
45 **for Fiscal Impact**

  
\_\_\_\_\_  
47 Planning & Development Committee, Chairperson

48  
49 CC

50  
51 Dated this 12<sup>th</sup> day of May 2020

52  
53 ORDINANCE 20-21/014

**APPROVED BY**  
**CORPORATION COUNSEL**  
**AS TO FORM**

20-21/014

Chilson

Eau Claire County  
Department of Planning and Development  
Eau Claire County Courthouse  
721 Oxford Avenue, Room 3344  
Eau Claire, Wisconsin 54703  
(715) 839-4741

RECEIVED

APR 16 2020

COUNTY CLERK

Rezoning - County

Application Accepted: 4/16/2020
Accepted By: Matt Michels
Receipt Number: 63467
Town Hearing Date: 05/11/2020
Scheduled Hearing Date: 5/12/2020
Application No: RZN-0008-20
Appl Status: Pending

Pursuant to the procedure described in Wisconsin Statutes Section 59.69(5), I hereby petition the Eau Claire County Board of Supervisors to amend the Zoning District from:

Existing Zoning District: **AP**      Proposed Zoning District(s): **A2**      Acres to be Rezoned: 2

Owner/Applicant Name(s):	Address:	Telephone:
Ian G Mattson	(ow) S 10495 COUNTY ROAD F ELEVA	
Rachael K Mattson	(ow) S 10495 COUNTY ROAD F ELEVA	
Real Land Surveying	(appl) 1360 INTERNATIONAL DR EAU CLAIRE	715-514-4116(W)

Site Address(es):  
S 10540 COUNTY ROAD F ELEVA

Property Description: Sec 05 Twn 25 Rge 09      Town of Pleasant Valley      Lot Area: 40.000      ACRES

Zoning District(s): AP

Overlay District:  Shoreland     Flood Plain     Airport     Wellhead Protection     Non-Metallic Mining  
Check Applicable

PIN	Alternate No	Parcel No	Legal (partial)
1801822509051300001	018101204000	25.9.5.1-3	SW-NE

I certify by my signature that all the information presented herein is true and correct to the best of my knowledge. I give permission for the staff of the Eau Claire County Department of Planning and Development to enter my property for the purpose of collecting information to be used as part of the public hearing process. I further agree to withdraw this application if substantive false or incorrect information has been included.

Owner/Agent Signature \_\_\_\_\_ Date \_\_\_\_\_

Check if DATCAP must be notified \_\_\_\_\_

Check if DNR to Receive Copy \_\_\_\_\_

At the public hearing, the applicant may appear in person or through an agent or an attorney of his/her choice. The applicant/agent/attorney may present testimony, evidence and arguments in support of the application. All site plans, pictures, etc. become the property of the Department, and will remain in the file.



Eau Claire County  
 Department of Planning and Development  
 Eau Claire County Courthouse  
 721 Oxford Avenue, Room 3344  
 Eau Claire, Wisconsin 54703  
 (715) 839-4741

Application Accepted:	4/16/20
Accepted By:	mm
Receipt Number:	63467
Town Hearing Date:	5/11/20
Scheduled Hearing Date:	5/12/20

### REZONING APPLICATION

Pursuant to the procedure described in Wisconsin Statutes Section 59.69(5), I hereby petition the Eau Claire County Board of Supervisors to amend the Zoning District from:

Existing Zoning District: AP	Proposed Zoning District(s): A-2
Acres to be rezoned: 2	

Property Owner Name: Ian and Rachael Mattson	Phone# 7158296602
Mailing Address: S10495 County Road F Eleva WI 54738	
Email Address: mattson3@gmail.com	

RECEIVED

APR 16 2020

COUNTY CLERK

Agent Name: Peter J. Gartmann Real Land Surveying	Phone# 715-514-4116
Mailing Address: 1360 International Drive Eau Claire WI 54701	
Email Address: pgartmann@rls-aec.com	

#### SITE INFORMATION

Site Address: S10540 County Road F Eleva WI 54738	
Property Description: SW ¼ NE ¼ Sec. 5, T 25 N, R 9 W, Town of Pleasant Valley	
Zoning District:	Code Section(s):
Overlay District: Check Applicable	<input type="checkbox"/> Shoreland <input type="checkbox"/> Floodplain <input type="checkbox"/> Airport <input type="checkbox"/> Wellhead Protection <input type="checkbox"/> Non-Metallic Mining
Computer #(s):	018 - 101 - 204 - 000

#### GENERAL APPLICATION REQUIREMENTS

Applications will not be accepted until the applicant has met with department staff to review the application and determine if all necessary information has been provided. All information from the checklist must be included.

<input checked="" type="checkbox"/> Complete attached information sheet	<input checked="" type="checkbox"/> Contact the Town to coordinate a recommendation on the application
<input checked="" type="checkbox"/> Provide legal description of property to be rezoned	<input checked="" type="checkbox"/> Provide \$595.00 application fee (non-refundable), payable to the Eau Claire County Treasurer (\$525.00 application processing fee and \$70.00 mapping surcharge fee)

I certify by my signature that all information presented herein is true and correct to the best of my knowledge. I give permission for the staff of the Eau Claire County Department of Planning and Development to enter my property for the purpose of collecting information to be used as part of the public hearing process. I further agree to withdraw this application if substantive false or incorrect information has been included.

Owner/Agent Signature: *Ian & Rachael Mattson*

Date: 4/14/20  
4/14/2020

At the public hearing, the applicant may appear in person or through an agent or an attorney of his/her choice. The applicant/agent/attorney may present testimony, evidence and arguments in support of the application. All site plans, pictures, etc. become the property of the Department, and will remain in the file.



Eau Claire County  
 Department of Planning and Development  
 Eau Claire County Courthouse  
 721 Oxford Avenue, Room 3344  
 Eau Claire, Wisconsin 54703  
 (715) 839-4741

Application Accepted:	
Accepted By:	
Receipt Number:	
Town Hearing Date:	
Scheduled Hearing Date:	

## REZONING APPLICATION

Pursuant to the procedure described in Wisconsin Statutes Section 59.69(5), I hereby petition the Eau Claire County Board of Supervisors to amend the Zoning District from:

Existing Zoning District: AP	Proposed Zoning District(s): A-2
Acres to be rezoned: 2.3	

Property Owner Name: Ian and Rachael Mattson	Phone# 7158296602
Mailing Address: S10495 County Road F Eleva WI 54738	
Email Address: mattson3@gmail.com	

Agent Name: Peter J. Gartmann Real Land Surveying	Phone# 715-514-4116
Mailing Address: 1360 International Drive Eau Claire WI 54701	
Email Address: pgartmann@rls-aec.com	

### SITE INFORMATION

Site Address: S10540 County Road F Eleva WI 54738	
Property Description: SW ¼ NE ¼ Sec. 5, T 25 N, R 9 W, Town of Pleasant Valley	
Zoning District:	Code Section(s):
Overlay District: Check Applicable	<input type="checkbox"/> Shoreland <input type="checkbox"/> Floodplain <input type="checkbox"/> Airport <input type="checkbox"/> Wellhead Protection <input type="checkbox"/> Non-Metallic Mining
Computer #(s):	018 - 101 - 204 - 000

### GENERAL APPLICATION REQUIREMENTS

Applications will not be accepted until the applicant has met with department staff to review the application and determine if all necessary information has been provided. All information from the checklist must be included.

<input checked="" type="checkbox"/> Complete attached information sheet <input checked="" type="checkbox"/> Provide legal description of property to be rezoned	<input checked="" type="checkbox"/> Contact the Town to coordinate a recommendation on the application <input checked="" type="checkbox"/> Provide \$595.00 application fee (non-refundable), payable to the Eau Claire County Treasurer (\$525.00 application processing fee and \$70.00 mapping surcharge fee)
--	---

I certify by my signature that all information presented herein is true and correct to the best of my knowledge. I give permission for the staff of the Eau Claire County Department of Planning and Development to enter my property for the purpose of collecting information to be used as part of the public hearing process. I further agree to withdraw this application if substantive false or incorrect information has been included.

Owner/Agent Signature 

Date 4/14/2020

At the public hearing, the applicant may appear in person or through an agent or an attorney of his/her choice. The applicant/agent/attorney may present testimony, evidence and arguments in support of the application. All site plans, pictures, etc. become the property of the Department, and will remain in the file.



## REZONING APPLICATION CHECKLIST

Applications are due by Tuesday at 12:00 PM three weeks prior to the Committee on Planning and Development meeting. The application must include the items listed below. After a preliminary review, additional information may be needed. A hearing will not be scheduled until the application is deemed complete. Applications are considered complete when all materials and associated fees are received and approved by staff.

### Required Application Items:

- Application must be signed by the property owner(s)
- A legal description of land and address of land to be rezoned
- Complete the attached supplemental rezoning information sheet
  - Describe the reason for the request
  - Describe how the proposed zoning district and the uses allowed in that district are appropriate for the selected location, and how the proposed change in zoning will uphold the purpose of the zoning ordinance
  - Explain and justify why this particular property is under consideration for rezoning
    - For rezoning requests from A-P to any zoning district other than the AR district must consider the factors in Section 18.32.055 A. – D.
    - For rezoning requests from the A-P to the AR zoning district must consider the factors in Section 18.06.050 A. – D.
    - For rezoning requests out of the Shoreland-wetland district must consider Section 18.19.100 B

The rezoning procedures and details have been outlined in the rezoning brochure, which is available at the Department of Planning and Development.

SUPPLEMENTAL INFORMATION FOR A REZONING PETITION

In order to process your application as quickly as possible, please fill in all of the sections below that are applicable to your request, and attach all appropriate maps or plans described below that are relevant to your request.

Describe the reason(s) for your rezoning request:

The rezone application is to make the existing improvements (House and Septic system) to be located on the proper zoning district and reconfigure the parcel in a recorded Certified Survey Map lot.

The applicant wants the ability to sell the house and improvements without including the AP zoned properties (40 acres).

When evaluating a rezoning petition, staff from the Eau Claire County Department of Planning and Development consider whether the purpose of the proposed zoning district and the uses allowed in the district are appropriate for the selected location. Staff also considers whether the change in zoning will uphold the purpose of the zoning ordinance, which is to separate incompatible land uses from one another, to maintain public health and safety, to protect and conserve natural resources, to prevent overcrowding, to preserve property values, and to maintain the general welfare of the citizens. Please describe how the proposed zoning district and the uses allowed in that district are appropriate for the selected location, and how the proposed change in zoning will uphold the purpose of the zoning ordinance.

The rezone will continue to uphold the purpose of the ordinance as the original AP parcel will still be in compliance to the minimum 35 acre parcel size. No new buildable lots or parcels will be created as a result of this re-zone. Area being re-zoned is mostly non-buildable area or ESA as depicted by Eau Claire County.

Rezoning petitions to change the zoning of a parcel from the A-P Agricultural Preservation District to any other District must be based upon findings that consider the following factors:

- 1) The land is better suited for a use not allowed in the A-P Agricultural Preservation zoning district based on a review of soil types, historical productivity, location, and adjacent land uses;
- 2) The rezoning is consistent with any applicable comprehensive plans;
- 3) The rezoning is substantially consistent with the certified Eau Claire County Farmland Preservation Plan; and
- 4) The rezoning will not substantially impair or limit current or future agricultural use of surrounding parcels of land that are zoned for or legally restricted to agricultural use.

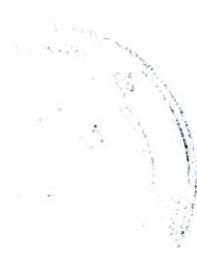
If you are petitioning to rezone land from an A-P District to another district, please describe how the proposed change in zoning will be consistent with the four findings listed here.

1. The land being re-zoned is not farmable. The land has slopes of 20% or greater.
2. The comprehensive plan does not change as only a small portion is being re-zoned.
3. Yes
4. The tillable lands will still be under the AP restriction.

RE-ZONE DESCRIPTION.

THAT THE EXTERIOR BOUNDARY OF THE LAND PARCEL SURVEYED AND MAPPED IS AS FOLLOWS: A PARCEL OF LAND LOCATED IN THE SOUTHWEST ¼ OF THE NORTHEAST ¼ SECTION 5, TOWNSHIP 25 NORTH, RANGE 9 WEST, TOWN OF PLEASANT VALLEY, EAU CLAIRE COUNTY, WISCONSIN AND BEING MORE PARTICULARLY DESCRIBED AS FOLLOWS:

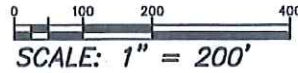
COMMENCING AT THE NORTH ¼ CORNER, THENCE S.01°30'37"W. ALONG THE WEST LINE OF SAID NORTHEAST ¼ A DISTANCE OF 1315.38 FEET ;  
THENCE S.89° 52'17"E. 1316.54 FEET TO THE EAST LINE OF SAID NORTHWEST ¼ OF THE NORTHEAST ¼;  
THENCE S.01° 42'17"W. ALONG SAID EAST LINE 198.01 FEET;  
THENCE N89°52'17"W ALONG THE NORTH LINE OF SAID SOUTHWEST ¼ OF THE NORTHEAST ¼, 553.29 FEET TO THE POINT OF BEGINNING; ;  
THENCE S.25°35'45" E. 189.18 FEET;  
THENCE S.66°26'41"W. 86.36 FEET ;  
THENCE S.80°21'00"W. 172.71 FEET;  
THENCE N.11°38'56"W. 113.25 FEET;  
THENCE N,83°34'09"W 470.36 FEET;  
THENCE N.89°52'45"W. 106.50 FEET TO THE WEST LINE OF SAID NORTHEAST ¼;  
THENCE N.01°30'37"E ALONG SAID WEST LINE A DISTANCE OF 71.98 FEET TO THE NORTHWEST CORNER OF SAID SOUTHWEST ¼ OF THE NORTHEAST ¼,  
THENCE S.89°52'17"E. ALONG THE NORTH LINE OF SAID SOUTHWEST ¼ OF THE NORTHEAST ¼ A DISTANCE OF 762.58 FEET TO THE POINT OF BEGINNING AND BEING SUBJECT TO EXISTING EASEMENTS.



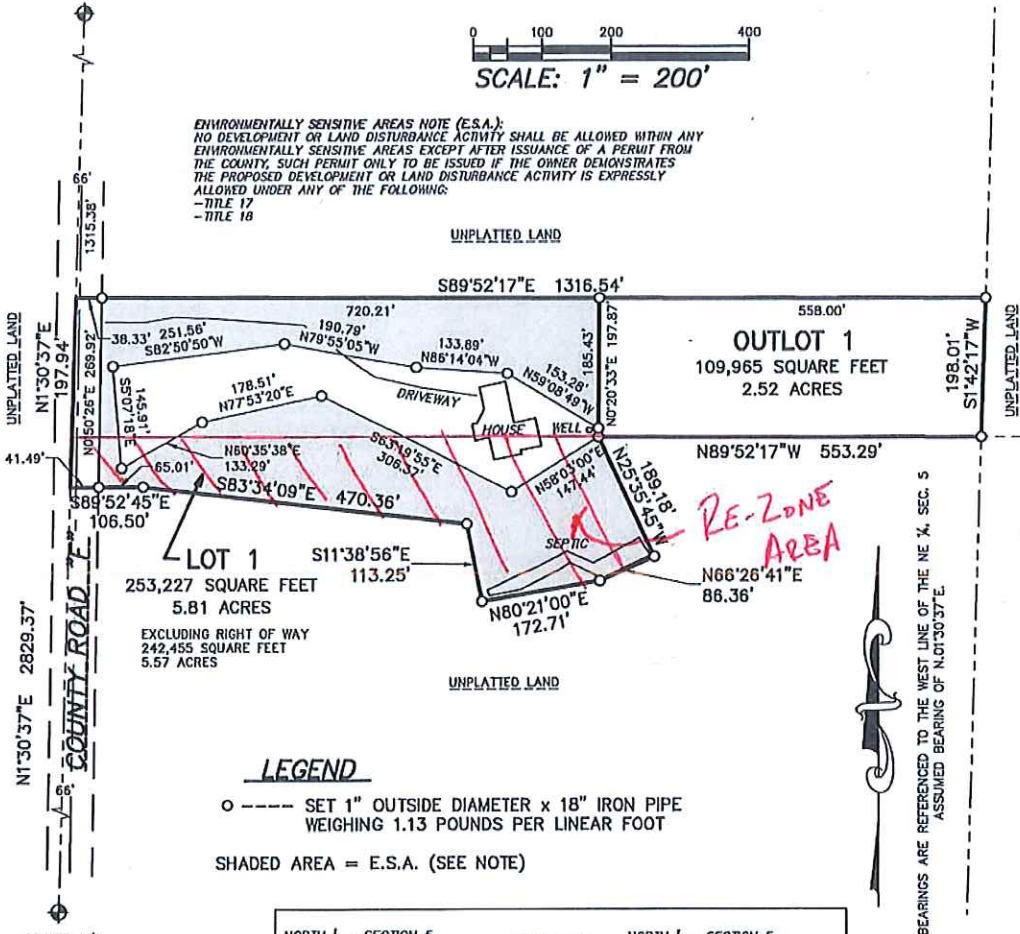
CERTIFIED SURVEY MAP, NUMBER \_\_\_\_\_

IN THE NORTHWEST  $\frac{1}{4}$  OF THE NORTHEAST  $\frac{1}{4}$  AND  
 SOUTHWEST  $\frac{1}{4}$  OF THE NORTHEAST  $\frac{1}{4}$   
 SECTION 5, TOWNSHIP 25 NORTH, RANGE 9 WEST,  
 TOWN OF PLEASANT VALLEY, EAU CLAIRE COUNTY,  
 WISCONSIN

NORTH  $\frac{1}{4}$   
 SECTION 5  
 FOUND P.K. NAIL  
 (FOUND ALUMINUM MONUMENT)



**ENVIRONMENTALLY SENSITIVE AREAS NOTE (E.S.A.):**  
 NO DEVELOPMENT OR LAND DISTURBANCE ACTIVITY SHALL BE ALLOWED WITHIN ANY ENVIRONMENTALLY SENSITIVE AREA EXCEPT AFTER ISSUANCE OF A PERMIT FROM THE COUNTY. SUCH PERMIT ONLY TO BE ISSUED IF THE OWNER DEMONSTRATES THE PROPOSED DEVELOPMENT OR LAND DISTURBANCE ACTIVITY IS EXPRESSLY ALLOWED UNDER ANY OF THE FOLLOWING:  
 - TITLE 17  
 - TITLE 18

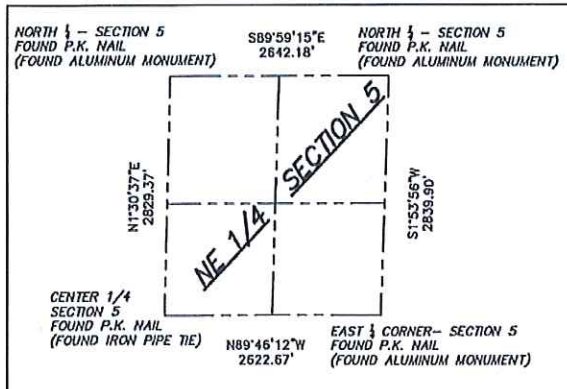


**LEGEND**

- --- SET 1" OUTSIDE DIAMETER x 18" IRON PIPE WEIGHING 1.13 POUNDS PER LINEAR FOOT
- SHADED AREA = E.S.A. (SEE NOTE)

BEARINGS ARE REFERENCED TO THE WEST LINE OF THE NE  $\frac{1}{4}$  SEC. 5 ASSUMED BEARING OF N.01°30'37"E.

CENTER  $\frac{1}{4}$   
 SECTION 5  
 FOUND P.K. NAIL  
 (FOUND IRON PIPE TIE)



REAL LAND SURVEYING, LLC  
 1360 INTERNATIONAL DRIVE  
 EAU CLAIRE, WI 54701  
 (715)514-4116  
 CADD NUMBER: 20086

VOLUME \_\_\_\_ OF CERTIFIED SURVEY MAPS, PAGE \_\_\_\_\_

**CERTIFIED SURVEY MAP, NUMBER \_\_\_\_\_**

LOCATED IN THE NORTHWEST ¼ OF THE NORTHEAST ¼ AND THE  
SOUTHWEST ¼ OF THE NORTHEAST ¼  
SECTION 5, TOWNSHIP 25 NORTH, RANGE 9 WEST,  
TOWN OF PLEASANT VALLY, EAU CLAIRE COUNTY, WISCONSIN

**SURVEYOR'S CERTIFICATE:**

I, PETER J. GARTMANN, PROFESSIONAL LAND SURVEYOR, HEREBY CERTIFY:  
THAT BY THE DIRECTION OF IAN MATTSON, I HAVE SURVEYED, DIVIDED AND MAPPED THE LAND PARCEL WHICH IS  
REPRESENTED BY THIS CERTIFIED SURVEY MAP.  
THAT THE EXTERIOR BOUNDARY OF THE LAND PARCEL SURVEYED AND MAPPED IS AS FOLLOWS: A PARCEL OF LAND  
LOCATED IN THE NORTHWEST ¼ OF THE NORTHEAST ¼ AND THE SOUTHWEST ¼ OF THE NORTHEAST ¼  
SECTION 5, TOWNSHIP 25 NORTH, RANGE 9 WEST, TOWN OF PLEASANT VALLEY, EAU CLAIRE COUNTY, WISCONSIN  
AND BEING MORE PARTICULARLY DESCRIBED AS FOLLOWS:

COMMENCING AT THE NORTH ¼ CORNER, THENCE S.01°30'37"W. ALONG THE WEST LINE OF SAID NORTHEAST ¼ A  
DISTANCE OF 1315.38 FEET TO THE POINT OF BEGINNING; THENCE S.89°52'17"E. 1316.54 FEET TO THE EAST LINE OF  
SAID NORTHWEST ¼ OF THE NORTHWEST ¼;  
THENCE S.01°42'17"W. ALONG SAID EAST LINE 198.01 FEET;  
THENCE N89°52'17"W ALONG THE SOUTH LINE OF SAID NORTHWEST ¼ OF THE NORTHWEST ¼, 553.29 FEET;  
THENCE S.25°35'45" E. 189.18 FEET;  
THENCE S.66°26'41"W. 86.36 FEET;  
THENCE S.80°21'00"W. 172.71 FEET;  
THENCE N.11°38'56"W. 113.25 FEET;  
THENCE N.83°34'09"W 470.36 FEET;  
THENCE N.89°52'45"W. 106.50 FEET TO THE WEST LINE OF SAID NORTHEAST ¼;  
THENCE N.01°30'37"E ALONG SAID WEST LINE A DISTANCE OF 269.92 FEET TO THE POINT OF BEGINNING.  
AND BEING SUBJECT TO EXISTING EASEMENTS.

THAT THIS CERTIFIED SURVEY MAP IS A CORRECT REPRESENTATION OF THE EXTERIOR BOUNDARY SURVEYED AND  
DESCRIBED, AND THE DIVISION OF IT. THAT I HAVE FULLY COMPLIED WITH THE PROVISIONS OF CHAPTER 236.34 OF THE  
WISCONSIN STATUTES, AE-7 OF THE WISCONSIN ADMINISTRATIVE CODE, AND THE SUBDIVISION REGULATIONS OF THE  
TOWN OF PLEASANT VALLEY, EAU CLAIRE COUNTY, WISCONSIN IN SURVEYING AND MAPPING THE SAME.

\_\_\_\_\_, DATED THIS \_\_\_\_\_ DAY OF \_\_\_\_\_, 2020  
PETER J. GARTMANN, P.L.S. NO. 2279

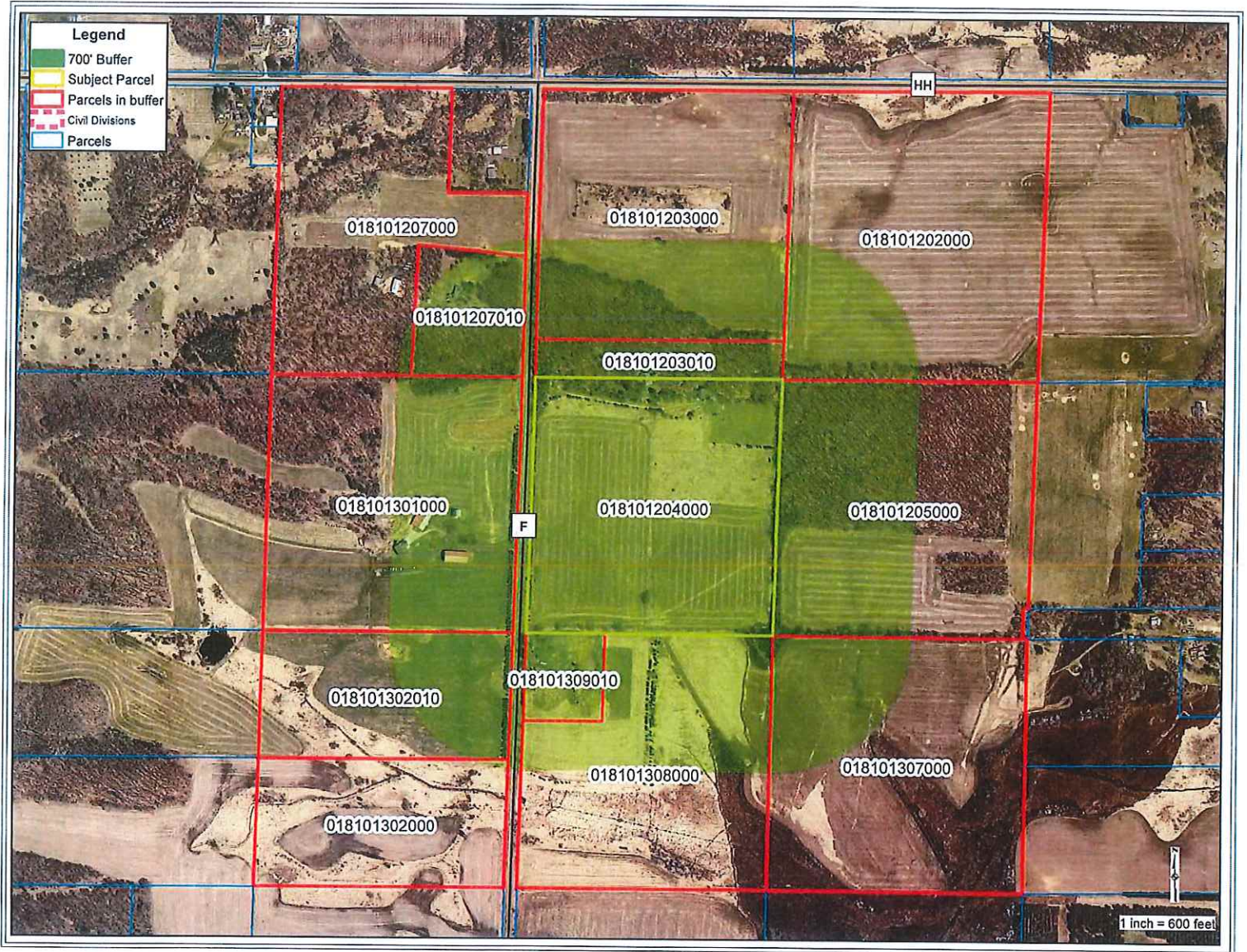
**CERTIFICATE OF COUNTY PLANNING AND DEVELOPMENT:**

I, RODNEY J. ESLINGER, DIRECTOR OF THE EAU CLAIRE COUNTY DEPARTMENT OF PLANNING AND DEVELOPMENT, HEREBY  
CERTIFY THAT THIS CERTIFIED SURVEY MAP IS APPROVED OF AS COMPLYING WITH SUBTITLE III, SUBDIVISION CONTROL, OF  
TITLE 18 OF THE COUNTY CODE OF GENERAL ORDINANCES.

\_\_\_\_\_, DATED THIS \_\_\_\_\_ DAY OF \_\_\_\_\_, 2020  
RODNEY J. ESLINGER

**Owner:**

IAN AND RACHAEL MATTSON  
S10495 COUNTY ROAD F  
ELEVA WI 54738



FirstName	LastName	Address	City	State	Zip
RONALD S & VICKI K	ANDERSON	S 10400 LOWES CREEK RD	ELEVA	WI	54738-9041
DAVID	BERGESON	S 10685 COUNTY ROAD F	ELEVA	WI	54738-2802
DANIEL J & KATHLEEN A	BUTZLER	W 440 BIRCH RD	ELEVA	WI	54738-9003
IAN	MATTSON	S 10495 COUNTY ROAD F	ELEVA	WI	54738-6001
PAUL	NELSON	S 10600 COUNTY ROAD F	ELEVA	WI	54738-6000
GREGORY	POZARSKI	S 10414 COUNTY ROAD F	ELEVA	WI	54738-9013
JOHNATHAN	SMITH	S 10400 COUNTY ROAD F	ELEVA	WI	54738-9013



**FACT SHEET**

**FILE NO. 20-21/009**

The Finance Department is granted authority to review and initially approve department requests to carryforward funds from the prior budget year into the current budget year. To be eligible for carryforward funding based on the policy, the following conditions must be satisfied:

1. Funds must be available in the requesting department's previous year's unspent balance;
2. Carryforward is needed for the completion of projects or the purchase of specific items approved in the previous year's budget but not accomplished;
3. Carryover is required to meet existing County Board policy or comply with accounting requirements.

The Finance Department has reviewed the following attached requests from departments and approved them based on the situational circumstances. Most of the fiscal impact is from capital projects that were not completed by the end of 2019.

The approved carryforwards will be moved forward from 2019 into the 2020 budget.

<b><i>Fiscal Impact:</i></b>	General Fund	\$ 264,366
	Capital Projects Fund	2,588,365
	Human Services Fund	29,272
	Airport Fund	<u>673,467</u>
	Total	<u>\$ 3,555,470</u>

Respectfully Submitted

Amy Weiss  
Senior Accounting Manager

Department Carryforward Request Form - Operating Expenditures  
2020 Carryforward Requests - from budget year 2019

Department	Account Description	Carryforward Requested Amount	Reason for the Request
<b>Fund: General</b>			
Extension	Pesticide Training Fees	990	unspent restricted fees
Finance	Independent Audit - Other	4,000	For 2019 Maximus indirect cost study completed in early 2020
IS	INFO SVCS/ COMPUTER HDWE MAINT	4,486	project began in 2019 but was interrupted by the weather
IS	INFO SVCS/ COMPUTER SOFTW MAINT	2,450	project began in 2019 but was not completed until 2020
IS	INFO SVCS/ OFFICE EQUIPMENT	2,735	project was delayed, equipment delivered in 2020
Parks	Land Purchase	15,267	Knowles Nelson Stewardship Grant funds
Parks	Expo Ctr Equip Fee Fund	13,681	equipment replacement fund
Parks	Ski Trail Lighting Donations	2,673	unspent donations
Parks	Ski Trail Groomer Donations	6,837	unspent donations
Parks	Guettinger Pty Conserv Prg Funds	3,653	generated from property in CRP program
Parks	Horse Trail Fund	752	unspent donations
Planning & Development	Land Stewardship Donations	20,650	Non-lapsing account
Sheriff	BIKE SAFETY DONATIONS	582	Non-lapsing account
Sheriff	DEC DONATIONS	34,803	Non-lapsing account
Sheriff	LAW ENFORCEMENT MEMORIAL DONATIONS	273	Non-lapsing account
Sheriff	EC LIONS CLUB DONATIONS	1,803	Non-lapsing account
Sheriff	KIDS & COPS PROGRAM DONATIONS	69,423	Non-lapsing account
Sheriff	AED DONATIONS	335	Non-lapsing account
Sheriff	Project Lifesaver Donations	11,245	Non-lapsing account
Sheriff	DRMSO Vehicle Sales Proceeds	59,194	Non-lapsing account
Sheriff	Field Services Law Enforcement Supplies	4,078	Product was budgeted in 2019 but not received until 2020
Sheriff	Field Services Other Equipment	4,455	Product was budgeted in 2019 but not received until 2020
	<b>TOTAL FUND: GENERAL</b>	<b>264,366</b>	
<b>Fund: Capital Projects</b>			
Facilities	LED Lighting	415,682	Complete LED retrofit of the Courthouse -approved in 2019
Facilities	Courthouse/DA Renovation	158,307	Project was not able to be finished in 2019
Facilities	Courthouse/Special Assessments	32,821	Lake Street Special Assessments for 2020
Facilities	Highway Shop	404,000	Highway facility repair approved late in 2019
IS	INFO SVCS/EQUIPMENT	120,103	complete grant project spanning multiple years
IS	INFO SVCS/TOWER	235,493	complete tower and grant projects spanning multiple years
IS	INFO SVCS/EQUIPMENT	185,214	complete grant project spanning multiple years
IS	INFO SVCS/SOFTWARE	286,500	complete projects in progress - Transcendent, Granicus, etc.
IS	INFO SVCS/NETWORK	29,270	complete CVRA fiber project
IS	INFO SVCS/SERVER	106,027	complete storage upgrade for Jail servers
IS	INFO SVCS/SURVEILLANCE	46,443	complete Jail camera replacement project
IS	INFO SVCS/WIRELESS	28,194	complete MPLS upgrade project
Nondepartmental	Veteran's Memorial Park	225,000	1st installment not paid in 2019
Parks	Parks Capital Equipment	69,000	Truck has not been delivered yet, it is done, but not here yet
Parks	Parks Capital Equipment Insurance	189,520	Truck has not been delivered yet, should be done soon though
Parks	Parks Capital Equipment Insurance	5,800	Sander for tri axle truck, will be on truck when delivered
Parks	Parks Capital Equipment partial insurance	34,216	Concrete needs to be poured and interior walls framed after that
Parks	Parks Capital Equipment	8,692	remaining bond proceeds
	PLANNING & DEV/ CAPITAL IMPROVEMENTS - LAKE DISTRICTS	8,084	The Lake Districts didn't complete all their planned projects in 2019. Total amount of capital budgeted for Dept 15, was \$267,350.
Planning & Development	<b>TOTAL FUND: CAPITAL PROJECTS</b>	<b>2,588,365</b>	
<b>Fund: DHS</b>			
DHS	Misc Donations	1,051	unspent donations
DHS	AIM Ct	5,235	unspent donations
DHS	CST	2,868	unspent donations
DHS	Drug Ct	3,664	unspent donations
DHS	Emplee Spirit	300	unspent donations
DHS	Foster Care	104	unspent donations
DHS	Healthy Initiatives	452	unspent donations
DHS	Vets Ct	13,974	unspent donations
DHS	Kinship	1,625	unspent donations
	<b>TOTAL FUND: DHS</b>	<b>29,272</b>	
<b>Fund: Airport</b>			
Airport	Other Capital Improvement	16,440	Original payment (\$300,000) refunded in full from State of WI so local share due.
Airport	Other Capital Improvement	39,330	Original payment (\$300,000) refunded in full from State of WI so local share due.
Airport	Other Capital Improvement	937	Project not closed out by State of WI.
Airport	Other Capital Improvement	6,033	Project not closed out by State of WI.
Airport	Other Capital Improvement	38,819	Project start was delayed due to contractor issues
			Project will not be completed under AIP 44 due to contractor issues and federal money returned. Will be rebid at a later date
Airport	Other Capital Improvement	104,907	but expenses still incurred for design.
Airport	Other Capital Improvement	242,000	Project was started late by the State of WI
Airport	Other Capital Improvement	125,000	Project was delayed due to lack of federal funding
			Originally budgeted under AIP 44 but rebid as AIP 45 due to contractor issues with AIP 44.
Airport	Other Capital Improvement	100,000	
	<b>TOTAL FUND: AIRPORT</b>	<b>673,467</b>	
	<b>GRAND TOTAL: ALL FUNDS</b>	<b>\$ 3,555,470</b>	

1 Enrolled No.

2 RESOLUTION

3 File No. 20-21/009

4 - AUTHORIZING CARRYFORWARD OF FUNDS FROM 2019 BUDGET INTO 2020  
5 BUDGET -

6 WHEREAS, various departments have requested specific funds be non-lapsed and  
7 transferred into the 2020 accounts from 2019 departmental budgets; and

8  
9 WHEREAS, such budget transfers require County Board approval.

10  
11 NOW THEREFORE BE IT RESOLVED that the Eau Claire County Board of  
12 Supervisors authorizes amending the 2020 budget by transferring the following amounts into the  
13 2020 budget from the 2019 budget.

<u>FUND</u>	<u>DEPARTMENT</u>	<u>AMOUNT</u>
100	Extension	\$ 990
100	Finance	4,000
100	Information Systems	9,672
100	Parks & Forest	42,864
100	Planning & Development	20,650
100	Sheriff	<u>186,190</u>
Total General Fund		\$ 264,366
405	Facilities	1,010,810
405	Information Systems	1,037,244
405	Nondepartmental	225,000
405	Parks & Forest	307,227
405	Planning & Development	<u>8,084</u>
Total Capital Projects Fund		\$2,588,365
205	Human Services	29,272
602	Airport	<u>673,467</u>
Grand Total, All Funds		<u>\$3,555,470</u>

34  
35  
36  
37  
38 Reviewed by Finance Dept.  
39 for Fiscal Impact  
40  
41 -----  
42  
43

I hereby certify that the foregoing correctly represents  
the action taken by the undersigned Committee on  
May 11, 2020 by a vote of 5 for, 0 against.

44  
45  
46  
**APPROVED BY  
CORPORATION COUNSEL  
AS TO FORM**

\_\_\_\_\_  
Chairperson Stella Pagonis  
Committee on Finance & Budget



*Eau Claire County Board of Supervisors*

721 Oxford Avenue, Room 3520

Eau Claire, WI 54703

Phone: 715-839-5106

Fax: 715-839-6243



TO: Eau Claire County Board of Supervisors  
FROM: Nick Smiar, Chair  
RE: Appointment of Members to Various Boards, Commissions and Councils  
DATE: May 19, 2020

I certify that the named citizen representatives below have been selected for appointment as follows:

**Land Conservation Committee**

**TERM EXPIRES**

Ricky Strauch (reappointment)

April 2022

Glory Adams (reappointment)

April 2022

**Housing Authority**

**TERM EXPIRES**

Philip Swanhorst (reappointment)

April 2025

***Our Mission***

*To provide quality, innovative, and cost effective services that safeguard and enhance the well-being of residents and resources.*