



## **AGENDA**

**Eau Claire County Highway Committee**  
Thursday, October 6<sup>th</sup>, 2016 / 6:15 am  
Eau Claire County Highway Department - Room 101  
2000 Spooner Avenue, Altoona, WI 54720

1. Call the meeting to order.
2. Confirmation of meeting notice – Review
3. Past committee meeting minutes (9/15/16) – Review/Action
4. Public comment
5. Utility Policy Amendment – Discussion/Action
6. Discuss Fall Road Tour – Discussion/Action
7. Staff and committee reports – Discussion/Action
8. Payment vouchers (9/16/16 & 9/30/16) - Review
9. Future meeting dates, times, and agenda items – Discussion/Action
10. Adjourn.

\* the Committee may hear comments from the public for up to 30 minutes; not more than 5 minutes/person is allowed; this period is not considered a public hearing.

cc: Members, Media, Kathryn Schauf, Keith Zehms, Jon Johnson, Rich Walthers, Rod Thorson

Please note: Upon reasonable notice, efforts will be made to accommodate the need of disabled individuals through sign language interpreters or other auxiliary aids. For additional information or to request the service, contact the County ADA Coordinator at 839-4710, 839-1669 (FAX) or 839-4735 (TDD) or by writing to the ADA Coordinator, Human Resources Department, Eau Claire County Courthouse, 721 Oxford Avenue, Eau Claire, WI 54703.



## MINUTES

Eau Claire County • Committee on Highway

Thursday, Sept 15th, 2016 / 6:15 am

Highway Department Meeting Room 101 • 2000 Spooner Avenue, Altoona, WI 54720

Members Present: Chairman Ray Henning, Vice Chairman Steve Chilson, Supervisor Kathy Clark, Supervisor Carl Anton, Supervisor Katy Forsythe

Staff Present: Jon Johnson, Highway Commissioner; Rich Walthers, Highway Superintendent; Michael Donaldson, Administrative Associate

Other Present: Brandon and Desi Adkins

1. **Call meeting to order**

Chairman Henning called the meeting to order at 6:15 a.m.

2. **Confirmation of meeting notice - Review**

Meeting notice confirmed.

3. **September 1st Committee Meeting Minutes - Review/Discussion/Action**

Motion: Supervisor Clark to approve meeting minutes. Motion carried 5-0

4. **Public comment**

Brandon and Desi Adkins attended and spoke of a water problem occurring on their property. They expressed that the work done, widening and increasing the height of the road on CTH II in front of their house that occurred in a prior year, has resulted in water issues possibly caused by excess runoff in the ditch area. The couple hired a public engineer to evaluate the problem and he recommended that the ditch in front of the residence be restructured with a French drainage system which may alleviate some of the water problems. The engineer also recommended a skirt drain around the house as well as a sump pump in the basement. The couple is requesting the French drainage system be considered to be completed by the Highway department prior to winter.

-Supervisor Forsythe left the meeting

5. **Winter maintenance fund – Discussion/Action**

Commissioner Johnson presented a resolution draft to amend ordinance 140-90, 1996.

Motion: Supervisor Clark motioned to move forward with resolution. Motion carried 4-0

6. **Fall Road Tour – Discussion/Action**

Committee finalized the Fall Road Tour for Tuesday, October 25th from 8am to Noon

7. **Staff and committee reports – Discussion/Action**

Commissioner Jon Johnson spoke on:

- Less consulting as more is being done internal causing some reduction in cost
- Budget process: presented cost reduction through innovation, different construction process, and paperless timecards.

Highway Superintendent Rich Walthers spoke on:

- Construction projects are on schedule for completion: CTH KK and CTH HH
- Contractor has been lined up for highway striping

**8. Payment of Vouchers (9/9/2016) – Review**

The vouchers were reviewed.

**9. Future meeting dates, times, and agenda items – Discussion/Action**

Future dates:

- Thursday, Oct 6<sup>th</sup>, 2016 – 6:15 a.m.
- Tuesday, Oct 25<sup>th</sup>, 2016 (Road Tour) – 8:00 a.m. to Noon

**10. Adjourn**

Motion by Supervisor Anton to adjourn the meeting at 7:58 a.m. Motion carried 4-0

Respectfully submitted,

Michael Donaldson  
Highway Department

# Structure Attachments



# Structure Attachment Policy

- Existing structures
  - First answer is “NO”
- New structures
  - First answer is “NO”
- Structure redecking/reconstruction
  - First answer is “NO”
  - (Even if the utility was on the structure before)

# Maintenance and inspection problems



















# Highway Maintenance Manual

Bureau of Highway Maintenance

Chapter 9 Right-of-Way Use & Permits

December 2010

Section 15 Utility Accommodation

Subject 30 Structure Attachments

## **1.0 General**

Attachments to structures should be avoided. However, attaching utility facilities to highway structures may be permitted when they do not materially affect the:

- 1) Structure design and appearance,
- 2) Safe operation of traffic, and
- 3) Efficiency of maintenance.

Utilities currently attached to structures are not automatically allowed to reattach when WisDOT re-decks, reconstructs or does any other type of improvement that may force a utility to move its facilities. Utilities must prove to WisDOT that their situation warrants reattachment to the structure.





# Bad Structure Attachment of 2012





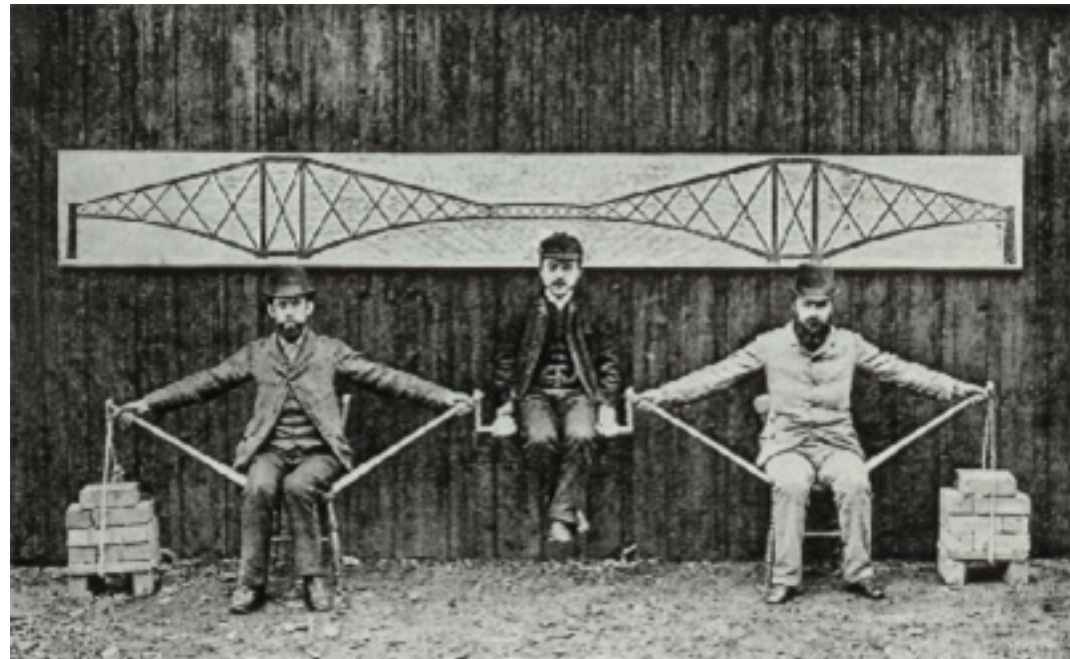


# Structure Attachments

- Develop a new policy to replace the 1995 (Cass) and 1997 (Haverberg) memos on structure attachments in conjunction with highway improvement projects.
  - Utility Accommodation Policy (UAP): Also provides link to UCG information
  - Utility Coordination Guide (UCG) [Section 4.5](#): The majority of the revisions for this item will be placed in this document

# Structure Attachment Policy Outline

- All attachment requests must be reviewed and approved by the regional bridge engineer (RBE) before WisDOT approves the permit
  - RBE approval must be documented in permit



# Structure Attachment Policy Outline

- Develop criteria on when they may be allowed
  - Make the process more objective than subjective
- Develop guidance on regular maintenance and inspection by the utility owner
- Develop guidance on the types of attachments allowed and not allowed
  - Clamping to diaphragms, bolt brackets to stiffeners, no drilling into deck, no welding, etc.
  - Include diagrams of preferred attachments

# HANGER ASSEMBLY DETAIL

## OPTION #2 – WHERE CROSSBAR IS PLACED ABOVE EXISTING DUCTS WHEN OPTION #1 IS NOT POSSIBLE

–FACING NORTH–

(FIRST FOUR HANGERS FROM SOUTH ABUTMENT AND LAST FOUR HANGERS BEFORE NORTH ABUTMENT)

5'-6" FROM SOUTH ABUTMENT TO STA. 176+33.05 DECREASES LINEARLY FROM 5'-6" AT STA. 176+33.05 TO 3'-0" AT STA. 179+72 NEAR NORTH ABUTMENT

5'-6"

L 5x3x $\frac{5}{16}$  LLV CROSSBAR SUPPORT FOR DUCT HOLDER  
 L = 11' (FROM SOUTH ABUTMENT TO STA. 176+33.05)  
 L = DECREASES LINEARLY FROM 11' AT STA. 176+33.05 TO 8.5' AT STA. 179+72 NEAR NORTH ABUTMENT

$\frac{3}{16}$  X 0'-8" P ANGLE (SEE DETAIL)

HANGER BOLT  
 $\frac{3}{4}$ " X 10 NC, 17" THREADED STEEL, NUTS, FLAT AND LOCK WASHERS

HANGER BOLTS  
 $\frac{3}{4}$ " X 10 NC, 17" THREADED STEEL, NUTS, FLAT AND LOCK WASHERS

$\frac{1}{2}$ " X 2" X 37 $\frac{1}{4}$ " L FGL. PLATE

$\frac{1}{2}$ " X 2" X 19 $\frac{5}{8}$ " L FGL. PLATE

$\frac{1}{2}$ " DIA. SAE GR5 BOLT w/ NUT, WASHER, AND LOCK WASHER(TYP.)

EXISTING GIRDER

$\frac{3}{4}$ " FGL SPACER TUBES

4" ABS DUCTS (TYP.)

4" ABS DUCTS (TYP.)

2"x2"x $\frac{1}{4}$ " SQUARE FGL TUBE

INTERMEDIATE BOLT  
 $\frac{3}{4}$ " X 10 NC, 10 $\frac{1}{2}$ " THREADED STEEL, NUTS, FLAT AND LOCK WASHERS

INTERMEDIATE BOLTS  
 $\frac{3}{4}$ " X 10 NC, 15" THREADED STEEL, NUTS, FLAT AND LOCK WASHERS

**DETAILS**  
**SECTION**




# HANGER ASSEMBLY DETAIL

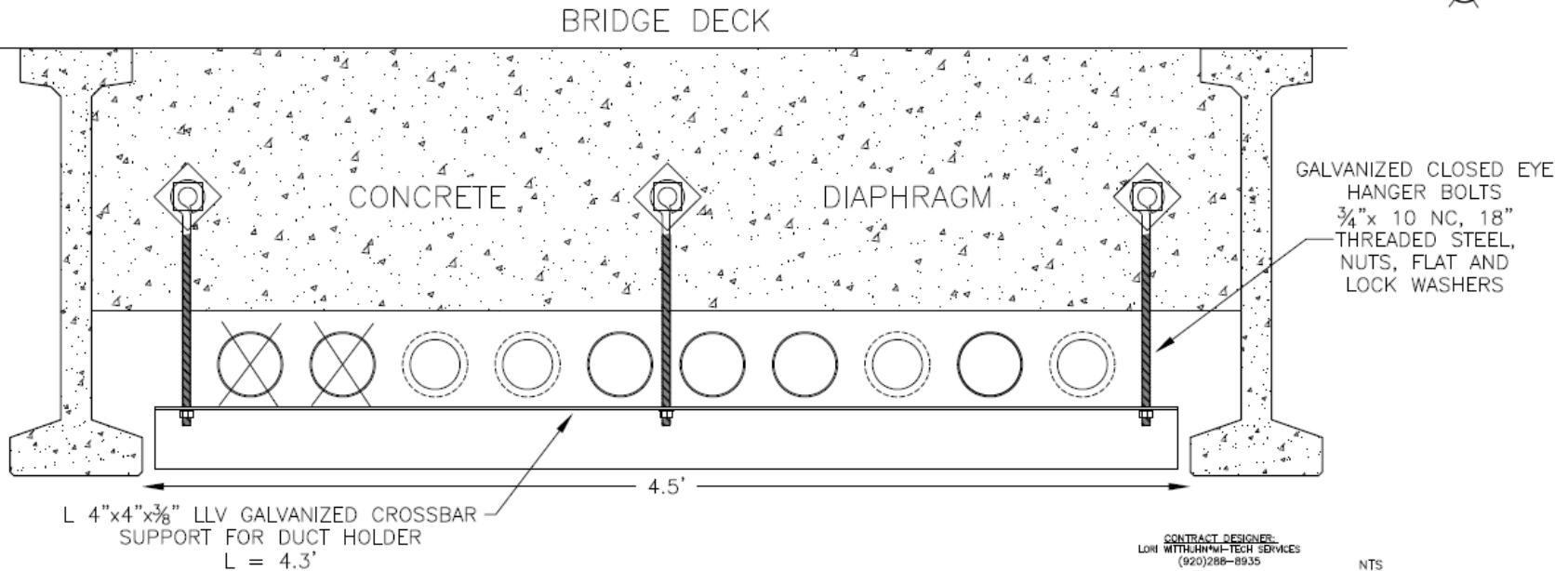
(FACING WEST)

**NOTES:**

1. FIELD VERIFY ALL DIMENSIONS AND CLEARANCES PRIOR TO FABRICATION.
2. ALL STEEL SHAPES SHALL CONFORM TO ASTM A36,  $F_y = 36$  KSI
3. HOT DIP GALVANIZE ALL STEEL MEMBERS AFTER FABRICATION AND BEFORE ASSEMBLY. ANY FIELD-DRILLED HOLES, TRIMMING, OR GRINDING, PAINT WITH ZINC-RICH PRIMER AFTER ERECTION.

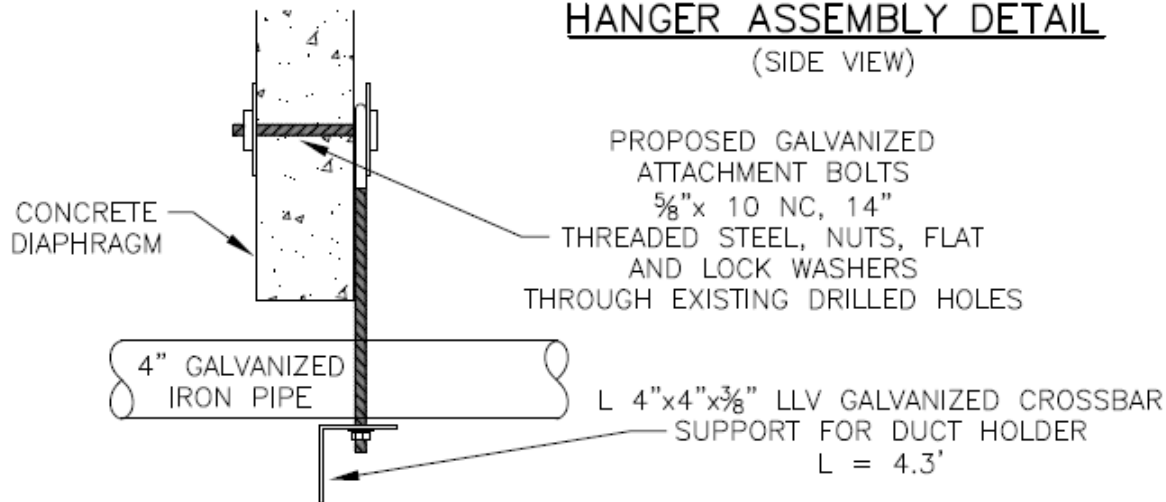
REUSE SAME BOLT HOLES  
REPLACE THREADED RODS  
AND CROSSBAR ANGLE IRON

-  REPLACE WITH GALVANIZED IRON SPLIT PIPE
-  REPLACE WITH GALVANIZED IRON PIPE
-  REMOVED & WILL NOT BE REPLACED



# HANGER ASSEMBLY DETAIL

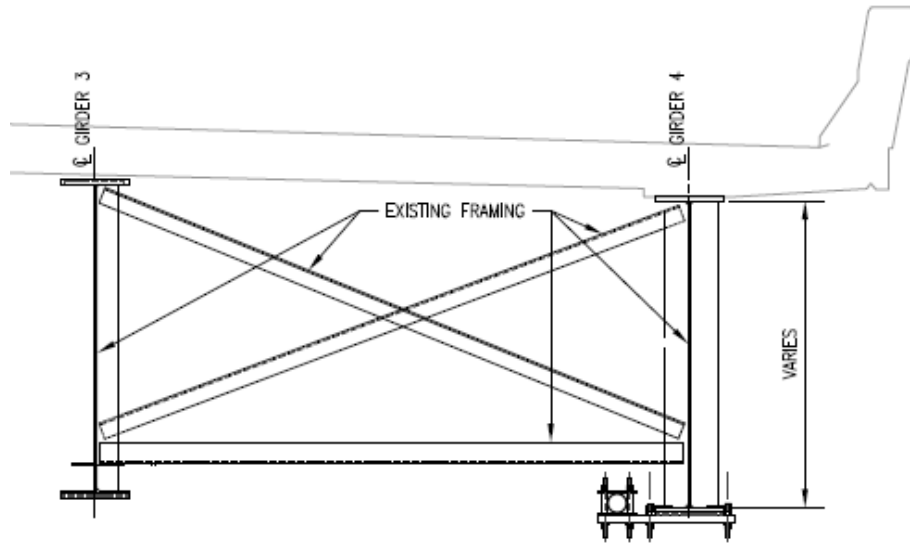
(SIDE VIEW)







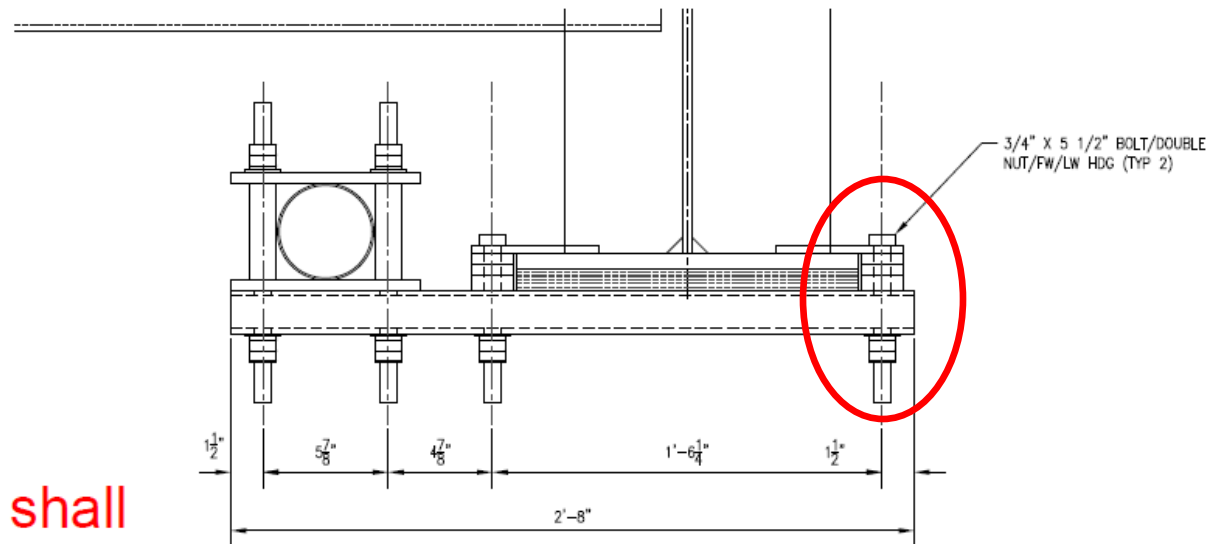




**PIPE SUPPORT - OPTION 1**

**DETAIL**

SCALE: 1/2" = 1'

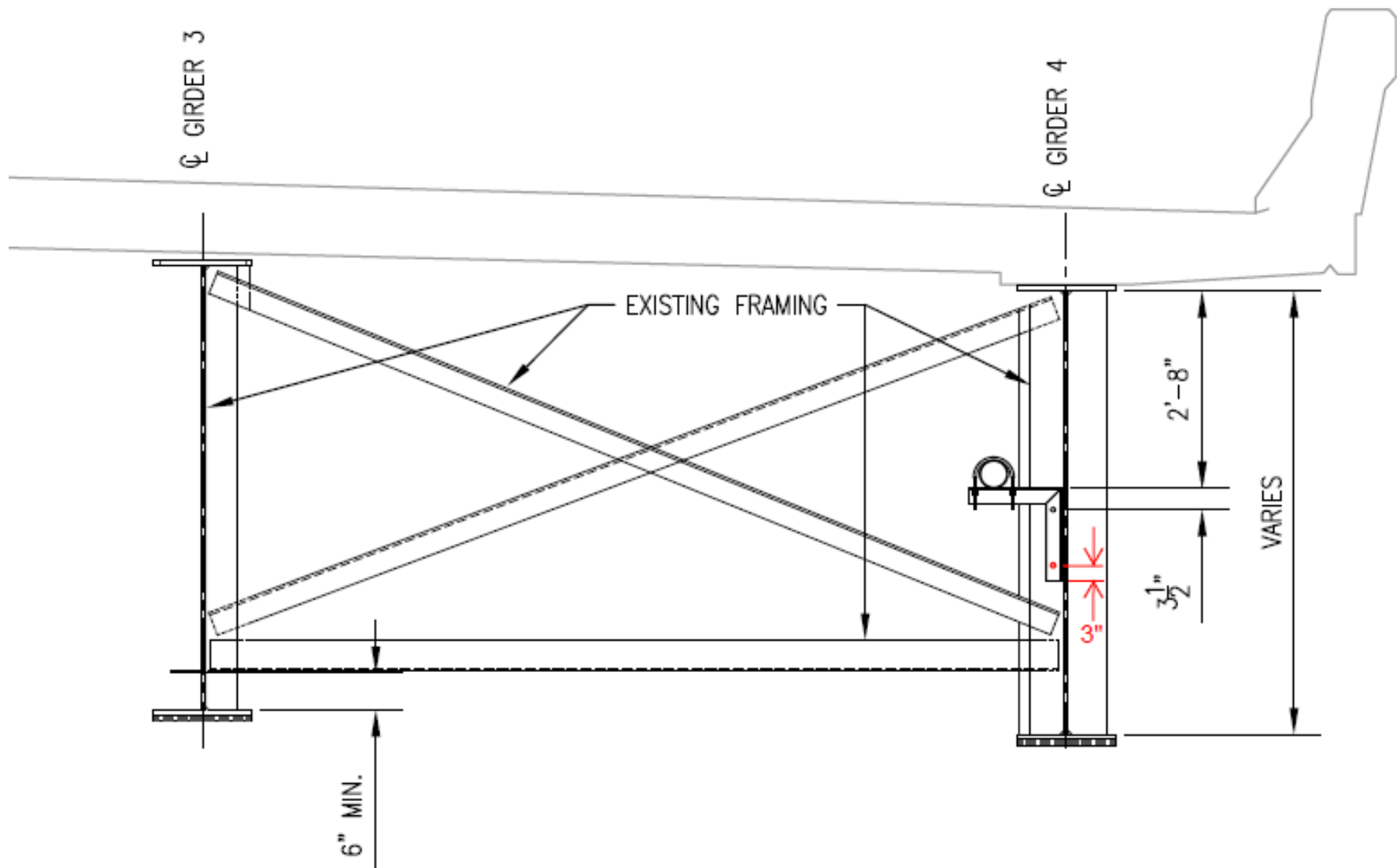


This option shall not be used

**PIPE SUPPORT - OPTION 1**

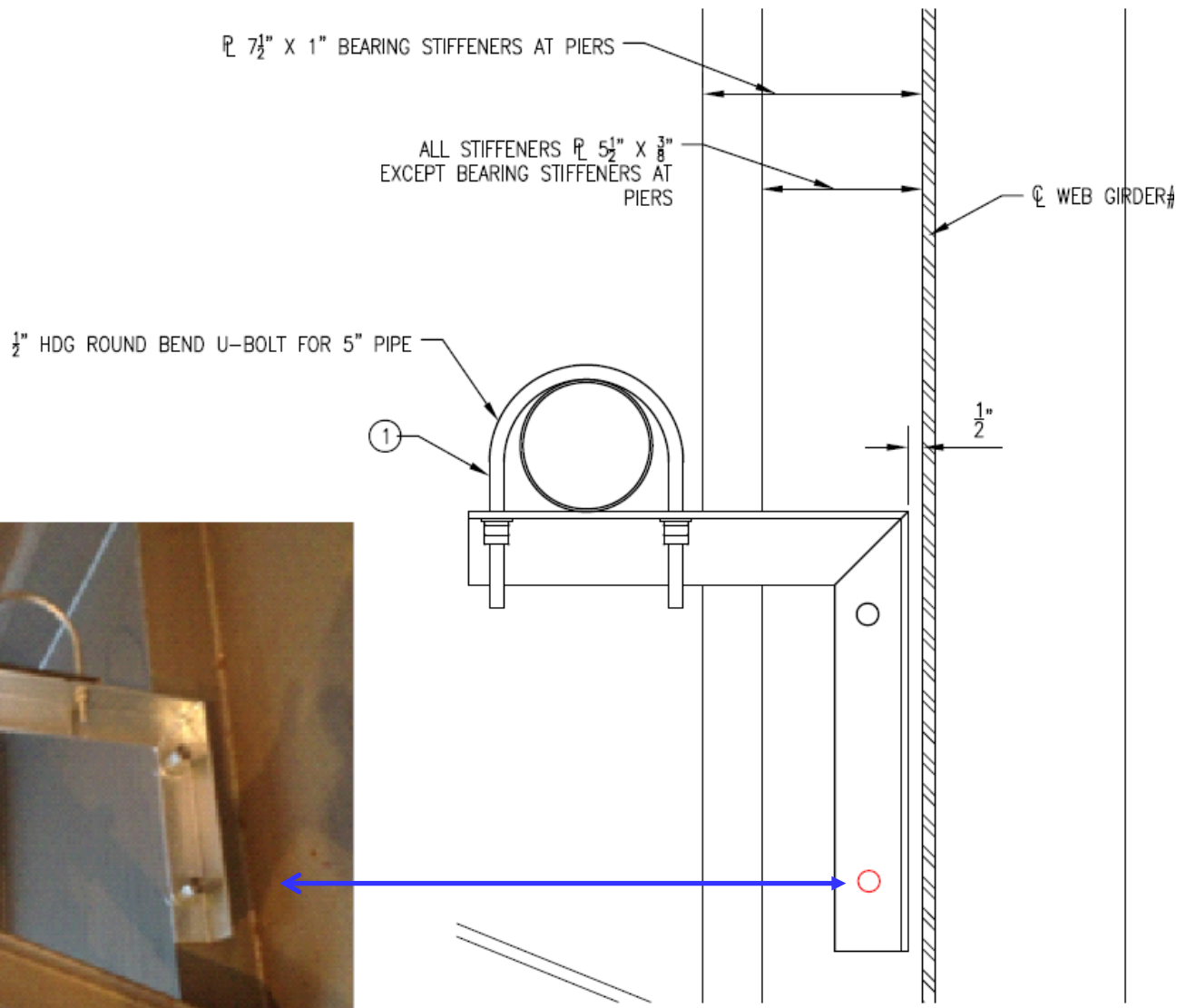
**DETAIL**

SCALE: 3" = 1'



## PIPE SUPPORT - OPTION 2 DETAIL

SCALE: 1/2" = 1'



**PIPE SUPPORT - OPTION 2**  
**DETAIL**  
 SCALE: 3" = 1'



# Structure Attachment Policy Outline

- Develop occupation cost table for high profile bridges (Frigo, Hoan, Blatnik) on Interstates and other controlled-access
  - Include a list of these bridges in HMM 09-15-40
- Delete obsolete guidance in HMM 09-15-30
- Clarify what type(s) of attachment requests need BHM and/or BOS approval
  - What items need to be in a hardship letter

# Structure Attachment Policy Outline

- Add pictures to UAP of both good and bad attachments to serve as examples



**Proposed Outline: Utility Structure Attachment Policy/Guidance Revision**

1. Develop a new policy to replace the 1995 (Cass) and 1997 (Haverberg) memos on structure attachments in conjunction with highway improvement projects.
  - a. Utility Accommodation Policy (UAP): Also provides link to UCG information
  - b. Utility Coordination Guide (UCG): The majority of the revisions for this item will be placed in this document
  
2. Revise and develop new UAP guidance on structure attachments:
  - a. Develop criteria on when they may be allowed
    - i. Makes the process more objective rather than subjective
  - b. Require that all attachment requests must be reviewed and approved by region bridge engineer (RBE) before WisDOT approves the structure attachment permit
    - i. RBE's approval must be documented in the permit when the box on the DT1553 application form is checked
  - c. Develop guidance on regular maintenance and inspection by utilities
  - d. Develop guidance on the types of attachments allowed and not allowed
    - i. Clamping to diaphragms, bolt brackets to stiffeners, no drilling into deck, no welding, etc.
    - ii. Include diagrams of preferred attachments
  - e. Develop occupation cost table for high profile bridges (Frigo, Hoan, Blatnik) on Interstates and other controlled-access highways
    - i. Partial guidance in HMM 09-15-30, then provide link to 09-15-40
    - ii. Include a list of these bridges in HMM 09-15-40 with new section (2.4)
  - f. Delete obsolete guidance in current HMM 09-15-30 (BOS should review)
  
3. Clarify what type(s) of attachment requests need BHM and/or BOS approval:
  - a. Develop criteria with BOS for this, i.e., what items need to be covered in a hardship letter
  
4. Add pictures to UAP of both good and bad attachments to serve as examples
  
5. Tie in with and provide links to any BOS policies



RE Utilities on  
Structures.msg